

Windows NT

All-in-One Guide to Mastering Windows NT!

Includes comprehensive coverage of
networking with Windows NT
Advanced Server

Robert Cowart

- In-depth advice on installing, configuring, and managing Windows NT systems
- Maximize performance with advanced networking strategies
- Keep your NT system running smoothly with troubleshooting tips and tricks from the experts

SAMS
PUBLISHING

UNLEASHED

To my supportive friends and family.

Copyright © 1994 by Sams Publishing

FIRST EDITION

All rights reserved. No part of this book shall be reproduced, stored in a retrieval system, or transmitted by any means, electronic, mechanical, photocopying, recording, or otherwise, without written permission from the publisher. No patent liability is assumed with respect to the use of the information contained herein. Although every precaution has been taken in the preparation of this book, the publisher and author assume no responsibility for errors or omissions. Neither is any liability assumed for damages resulting from the use of the information contained herein. For information, address Sams Publishing, 201 W. 103rd St., Indianapolis, IN 46290.

International Standard Book Number: 0-672-30380-9

Library of Congress Catalog Card Number: 93-86958

97 96 95 94 4 3 2 1

Interpretation of the printing code: the rightmost double-digit number is the year of the book's printing; the rightmost single-digit, the number of the book's printing. For example, a printing code of 94-1 shows that the first printing of the book occurred in 1994.

Composed in AGaramond and MCPdigital by Macmillan Computer Publishing

Printed in the United States of America

Trademarks

All terms mentioned in this book that are known to be trademarks or service marks have been appropriately capitalized. Sams Publishing cannot attest to the accuracy of this information. Use of a term in this book should not be regarded as affecting the validity of any trademark or service mark.

Windows NT is a trademark of Microsoft Corp.

Publisher

Richard K. Swadley

Associate Publisher

Jordan Gold

Acquisitions Manager

Stacy Hiquet

Managing Editor

Cindy Morrow

Acquisitions Editors

Gregg Busbyeager

Mark Taber

Development Editors

Mark Taber

Scott Parker

Production Editor

Gayle L. Johnson

Copy Editor

David Bradford

Editorial Coordinator

Bill Whimer

Editorial Assistants

Carol Ackerman

Sharon Cox

Lynette Quinn

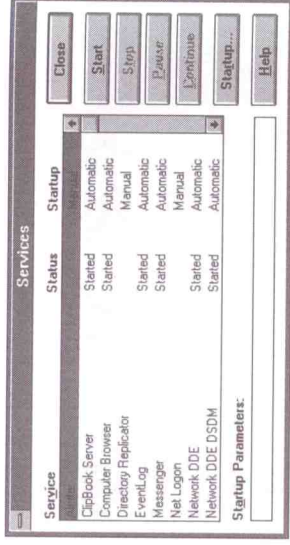
Technical Reviewer

Arthur Knowles

Part II

FIGURE 8.29.

The Services dialog box, listing services and each service's status, startup times, and optional parameters.



A list of services, along with their status and some buttons for working with them, appears. Table 8.4 describes the 15 services.

Table 8.4. The 15 services.

Service Name	Description
Alertler	Along with Messenger service, generates warning messages to administrators about problems on the local computer.
Clipbook Server	Allows sharing of Clipbook pages to network users.
Computer Browser	Allows browsing the network for resources shared by other workstations.
Directory Replicator	Performs directory replication service for administrators to easily copy complete directories to multiple workstations.
Event Log	Monitors the workstation's use by local and remote users, recording events of significance. Also reports internal error conditions such as malfunctioning hardware, drivers, and so on.
Messenger	Handles bidirectional communication between administrators. Also sends alerts generated by stations.
Net Logon	Used to verify the authenticity of users logging onto a workstation, workgroup, or domain.

Chapter 12

so, the UNC name will be in the MUP's local name table, and the MUP will just pass it on to the right requester.

If this is a new UNC name, the MUP sends it to each requester, essentially going around the room asking, "Is this your mitten, Timmy? Is this your mitten, Joey?" until a requester fesses up. The redirector with the highest registered priority response that claims that it can establish a connection to the UNC is passed the command and the security context of the application generating the request.

For applications that don't make UNC requests but instead make Windows networking calls directly, Windows NT also provides a multiple provider router (MPR), which functions similarly to the MUP but for different function calls.

Additional Network Services

In addition to the workstation and server services, Microsoft ported a few other services from their older OS/2 LAN Manager. Alerter, Messenger, Browser, and Replicator all provide important services for network users.

The Alerter is used to forward alerts generated by events such as a full disk drive to remote computers or usernames. The Messenger receives messages and alerts and displays them on-screen in a dialog box. The Browser collects information about the machines in this domain or workgroup for use by other applications. File Manager uses the Browser's information to list the available sharepoints on another system, which enables you to connect to a new drive. The replicator service automatically copies the contents of a directory from an NT Advanced Server to another machine in order to create a real-time background backup.

Distributed Applications

It seems that all you need to do today to attract a big crowd at a seminar is to put "client/server" on the brochure's cover. Consultants also can make big bucks by using these magic words.

Don't get snowed by all the buzzwords. A distributed (or client/server) application is simply a program that has two parts. One typically interacts with the user and runs on one computer (called the client), and the other (called the server) typically pro-

Part III

NET SEND

NET SEND sends a real-time message to other users, computers, or messaging names on the network. You can send a message only to a name that is active on the network. If the message is sent to a username, that user must be logged on and running the Messenger service to receive the message.

Syntax:

```
NET SEND {name | * | /DOMAIN[:name] | /BROADCAST | /USERS} message
```

Parameters:

name

The user, computer, or messaging name to send the message to. If the name is a computer name that contains blank characters, enclose the alias in quotation marks (" ").

Sends the message to all the names in your group.

Sends the message to all the names in your domain. If *:name* is replaced by a list of names separated by spaces, the message is sent to all the names in the specified domain or workgroup.

Sends the message to all the names on the network.

Sends the message to all users connected to the server.

The text to be sent as a message.

NET SESSION

NET SESSION lists or disconnects sessions between the server and other computers on the network. When used without options, it displays information about all sessions with the server of current focus.

Syntax:

```
NET SESSION [\\computername] [/DELETE]
```

Parameters:

computername

Lists the session information for the named computer.

/DELETE

Ends the session between the server and *computername* and closes all open files on the server for the session.

NET SESSION /DELETE with no *computername* closes all sessions.

Example:

```
C:\users\default>net session
```

Computer

User name

```
\\DELL
```

administr

The command completed successfully.

NET SHARE

NET SHARE makes a server's resources available for the resource. NET SHARE without options shares the resource on the server. For each resource or pathname(s) and the associated comment:

Syntax:

```
NET SHARE sharename
```

```
sharename=drive:path [/USER:
```

```
sharename [/USERS:number |
```

```
{sharename | devicename | d/
```

Parameters:

sharename

The name of

SHARE share

share.

Specifies the

Sets the max

neously acce

Specifies the

neously acce

Adds a comm

quotation m

One or more

sharename.

Stops sharing

```
/DELETE
```

Examples:

```
C:\users\default>net share temp45=
"This is a test. This is only a te
temp45 was shared successfully.
```

Explore Litigation Insights

Docket Alarm provides insights to develop a more informed litigation strategy and the peace of mind of knowing you're on top of things.

Real-Time Litigation Alerts



Keep your litigation team up-to-date with **real-time alerts** and advanced team management tools built for the enterprise, all while greatly reducing PACER spend.

Our comprehensive service means we can handle Federal, State, and Administrative courts across the country.

Advanced Docket Research



With over 230 million records, Docket Alarm's cloud-native docket research platform finds what other services can't. Coverage includes Federal, State, plus PTAB, TTAB, ITC and NLRB decisions, all in one place.

Identify arguments that have been successful in the past with full text, pinpoint searching. Link to case law cited within any court document via Fastcase.

Analytics At Your Fingertips



Learn what happened the last time a particular judge, opposing counsel or company faced cases similar to yours.

Advanced out-of-the-box PTAB and TTAB analytics are always at your fingertips.

API

Docket Alarm offers a powerful API (application programming interface) to developers that want to integrate case filings into their apps.

LAW FIRMS

Build custom dashboards for your attorneys and clients with live data direct from the court.

Automate many repetitive legal tasks like conflict checks, document management, and marketing.

FINANCIAL INSTITUTIONS

Litigation and bankruptcy checks for companies and debtors.

E-DISCOVERY AND LEGAL VENDORS

Sync your system to PACER to automate legal marketing.