



US005614906A

# United States Patent [19]

[11] Patent Number: **5,614,906**

Hayes et al.

[45] Date of Patent: **Mar. 25, 1997**

[54] **METHOD FOR SELECTING A REMOTE CONTROL COMMAND SET**

[75] Inventors: **Patrick H. Hayes**, Mission Viejo;  
**Kimthoa T. Nguyen**, Yorba Linda, both of Calif.

[73] Assignee: **Universal Electronics Inc.**, Twinsburg, Ohio

[21] Appl. No.: **636,666**

[22] Filed: **Apr. 23, 1996**

[51] Int. Cl.<sup>6</sup> ..... **G08C 19/12**

[52] U.S. Cl. .... **341/176; 340/825.37; 340/825.69; 340/825.72; 359/148; 379/102**

[58] Field of Search ..... 341/176, 173, 341/174, 175, 23; 348/734; 359/148; 364/709.14, 709.15, 709.16; 379/102; 340/825.37, 825.69, 825.72

4,959,810	9/1990	Darbee et al. ....	340/825.69
4,999,622	3/1991	Amano et al. ....	341/176
5,420,573	5/1995	Tanaka et al. ....	341/176
5,453,738	9/1995	Zirkl et al. ....	340/825.72
5,485,149	1/1996	Takiguchi et al. ....	359/148
5,537,463	7/1996	Escobosa et al. ....	379/102

*Primary Examiner*—Jeffery Hofsass  
*Assistant Examiner*—Andrew Hill  
*Attorney, Agent, or Firm*—Thomas R. Vigil; Gary Jarosik; Mark R. Galis

## [57] ABSTRACT

A method for selecting a command set from a group of command sets stored in the remote control. Each remote control command set includes a set of commands for operating at least one of various remotely controllable devices. A command, whose effect is observable in the remotely controlled device is assigned to one of the user actuated keys. The keys are pressed one by one until the user observes the desired effect on the remotely controlled device. The user then signals the remote control to exit the select procedure with the remote control setting the remote control to transmit future commands from the command set including the last transmitted effects observable command having the observed desired effect.

## [56] References Cited

### U.S. PATENT DOCUMENTS

4,703,359	10/1987	Rumbolt et al. ....	340/825.69
4,746,919	5/1988	Reitmeier ....	340/825.72
4,825,209	4/1989	Sasaki et al. ....	340/825.37

16 Claims, 6 Drawing Sheets

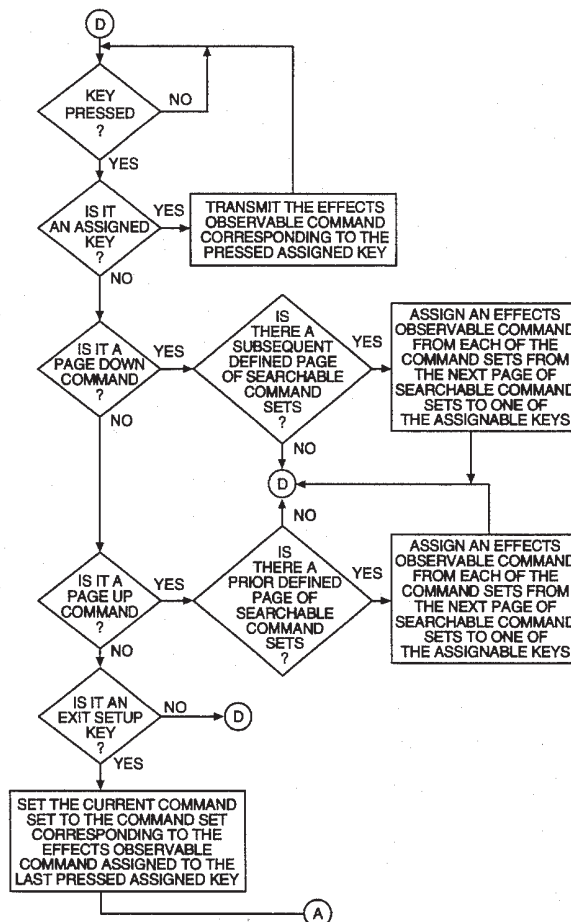
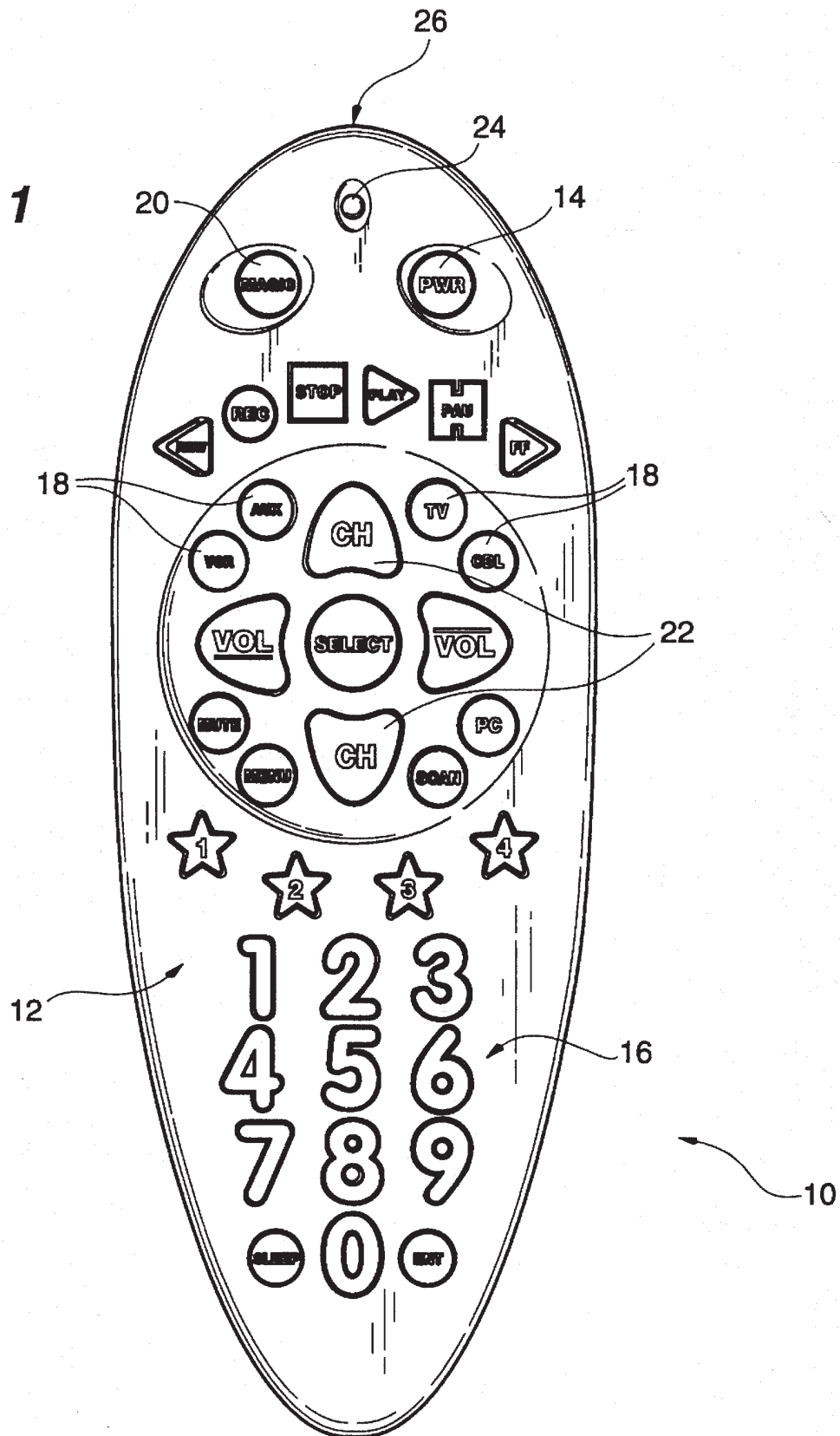
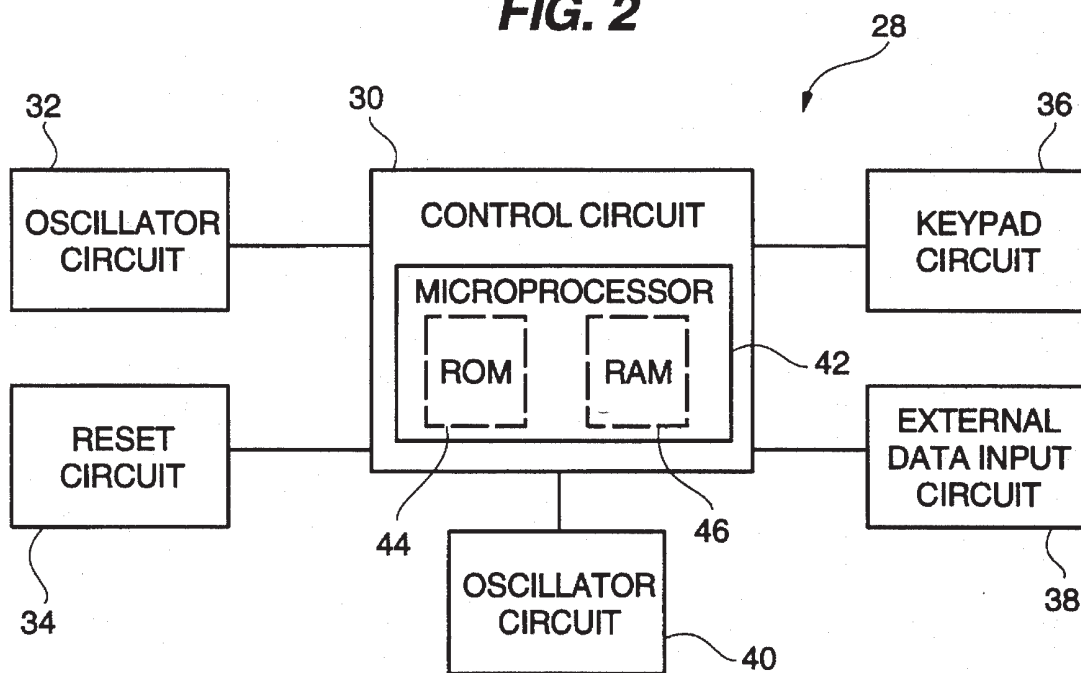


FIG. 1



**FIG. 2**



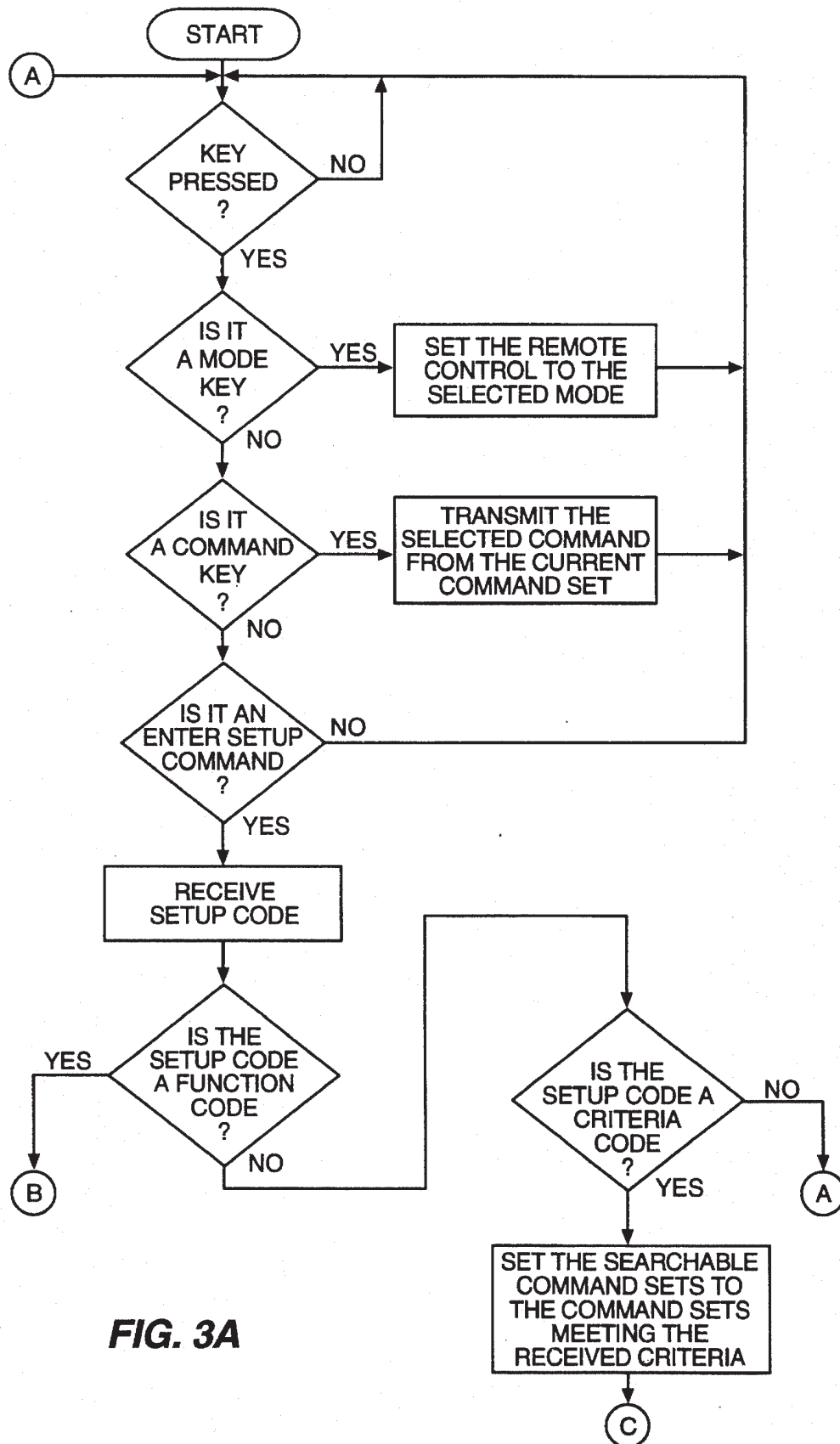
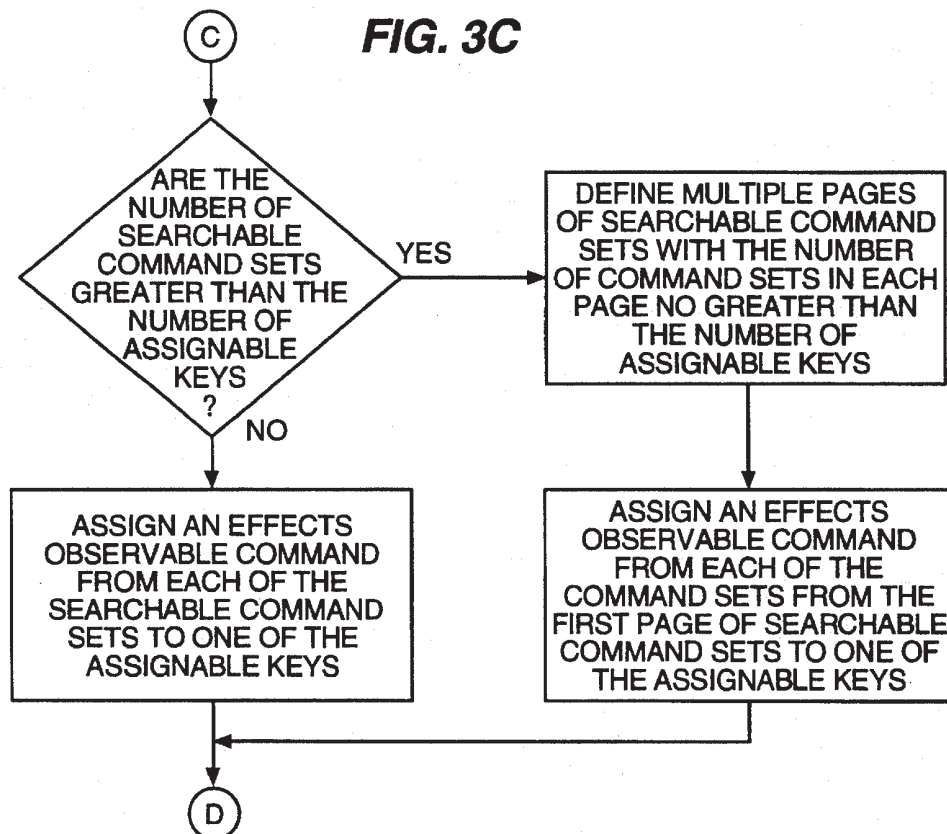
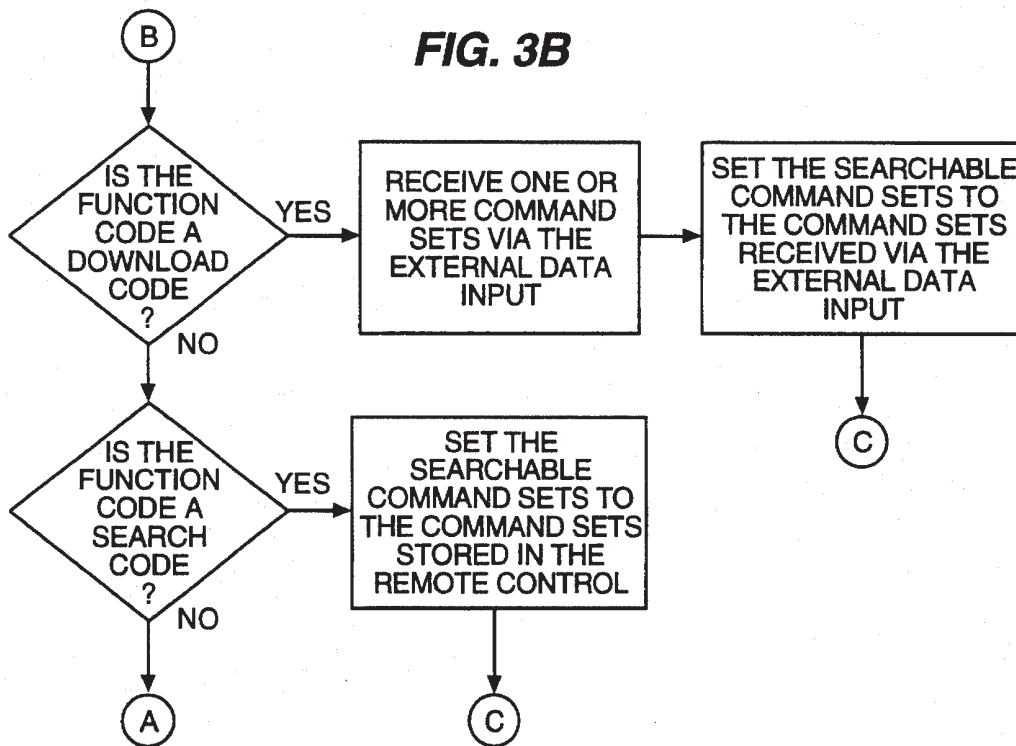


FIG. 3A



# Explore Litigation Insights

Docket Alarm provides insights to develop a more informed litigation strategy and the peace of mind of knowing you're on top of things.

## Real-Time Litigation Alerts



Keep your litigation team up-to-date with **real-time alerts** and advanced team management tools built for the enterprise, all while greatly reducing PACER spend.

Our comprehensive service means we can handle Federal, State, and Administrative courts across the country.

## Advanced Docket Research



With over 230 million records, Docket Alarm's cloud-native docket research platform finds what other services can't. Coverage includes Federal, State, plus PTAB, TTAB, ITC and NLRB decisions, all in one place.

Identify arguments that have been successful in the past with full text, pinpoint searching. Link to case law cited within any court document via Fastcase.

## Analytics At Your Fingertips



Learn what happened the last time a particular judge, opposing counsel or company faced cases similar to yours.

Advanced out-of-the-box PTAB and TTAB analytics are always at your fingertips.

## API

Docket Alarm offers a powerful API (application programming interface) to developers that want to integrate case filings into their apps.

## LAW FIRMS

Build custom dashboards for your attorneys and clients with live data direct from the court.

Automate many repetitive legal tasks like conflict checks, document management, and marketing.

## FINANCIAL INSTITUTIONS

Litigation and bankruptcy checks for companies and debtors.

## E-DISCOVERY AND LEGAL VENDORS

Sync your system to PACER to automate legal marketing.