

[54] UNIVERSAL REMOTE CONTROL UNIT WITH MODEL IDENTIFICATION CAPABILITY

[75] Inventors: Robin B. Rumbolt; William R. McIntyre, both of Knoxville; Larry E. Goodson, Blaine, all of Tenn.

[73] Assignee: NAP Consumer Electronics Corp., New York, N.Y.

[21] Appl. No.: 799,873

[22] Filed: Nov. 20, 1985

Related U.S. Application Data

[63] Continuation-in-part of Ser. No. 739,357, May 30, 1985.

[51] Int. CL⁴ H04N 5/44

[52] U.S. Cl. 358/194.1; 455/603; 340/825.69; 340/825.72

[58] Field of Search 358/194.1; 455/603, 455/352; 340/825.69, 825.71, 825.72, 825.73

[56] References Cited

U.S. PATENT DOCUMENTS

4,274,082 6/1981 Litz et al. 455/352 X
 4,334,221 6/1982 Rosenhagen et al. 340/825.69 X
 4,386,436 5/1983 Kocher et al. 455/151

4,482,947 11/1984 Zato et al. 358/194.1 X
 4,535,333 8/1985 Twardowski 340/825.72 X
 4,623,887 11/1986 Welles, II 340/825.72 X
 4,626,848 12/1986 Ehlers 358/194.1 X

FOREIGN PATENT DOCUMENTS

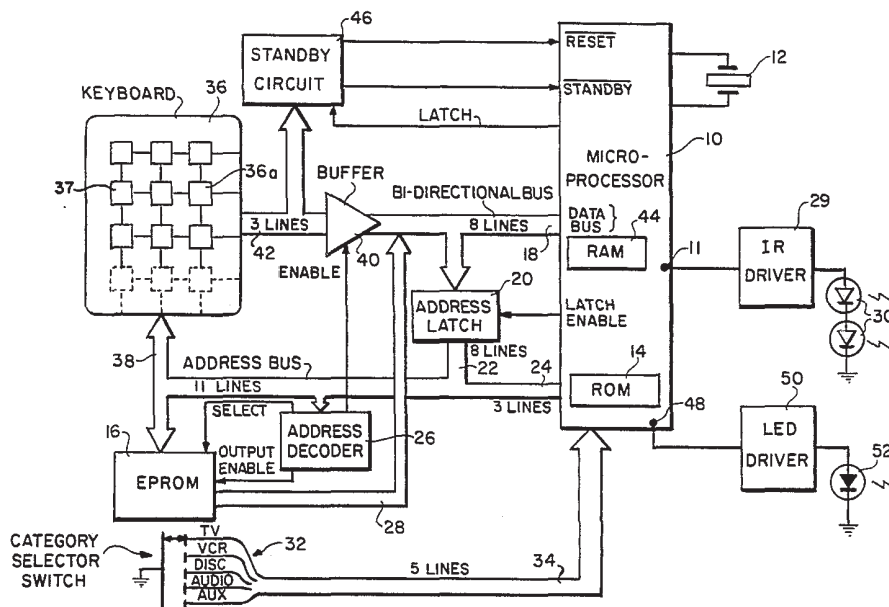
3338046 10/1984 Fed. Rep. of Germany 455/603
 3313493 10/1984 Fed. Rep. of Germany 455/603

Primary Examiner—Michael A. Masinick
 Assistant Examiner—E. Anne Totz
 Attorney, Agent, or Firm—Thomas A. Briody; William J. Streeter; Marianne R. Rich

[57] ABSTRACT

A remote control unit responds to activation of a "identify" button by transmitting a sequence of command signals, each of the same command in a different format. Since the appliance to be controlled is turned on, it responds in a predetermined way (e.g. a channel change) when it receives the properly formatted command. The user then terminates the learn mode and a pointer denoting the address of the last transmitted command, i.e. the properly formatted command, is stored in the unit and used as part of the address for reading data for subsequent user-selected commands out of memory.

13 Claims, 6 Drawing Figures



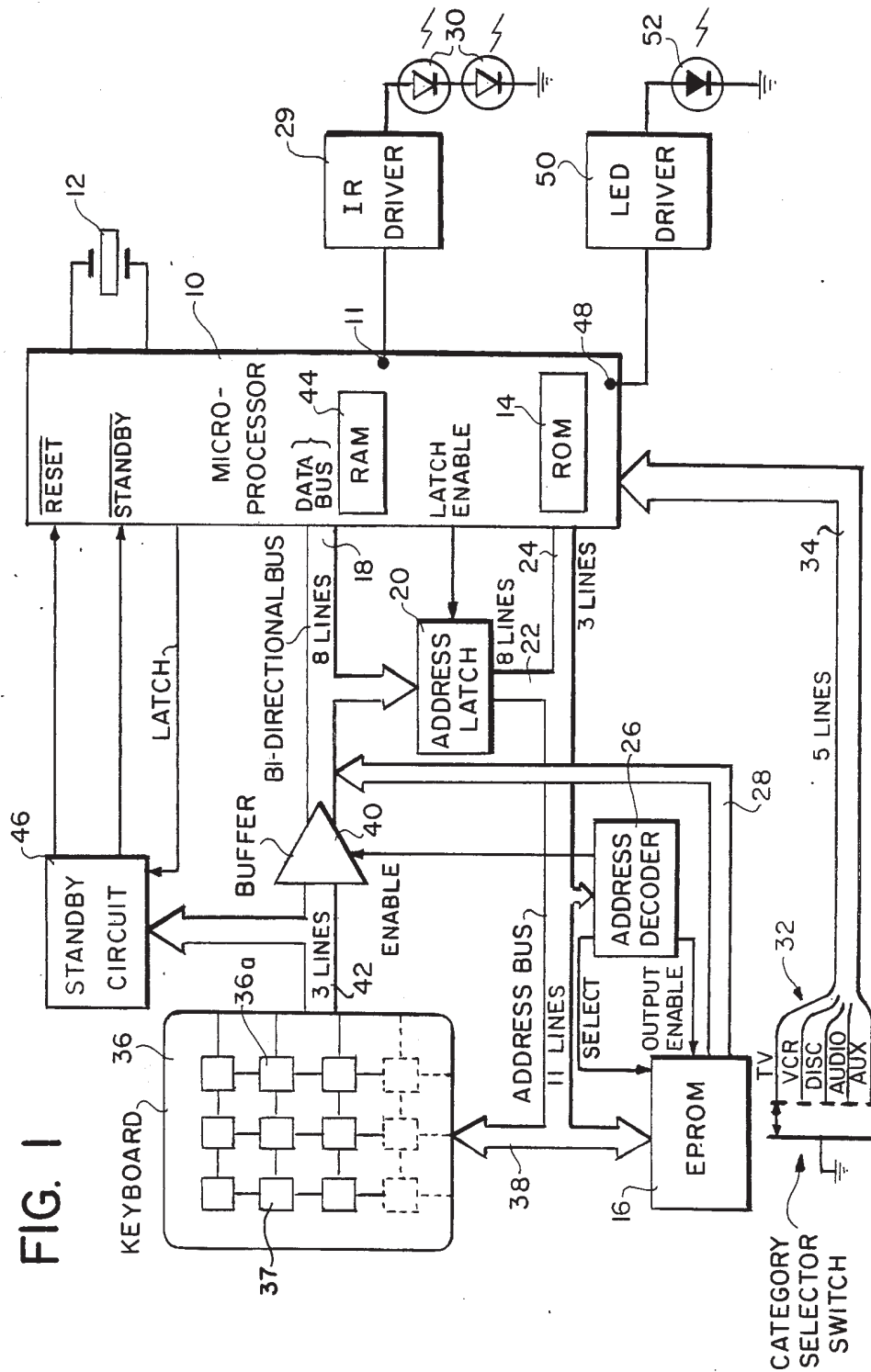


FIG. 1

FIG. 2

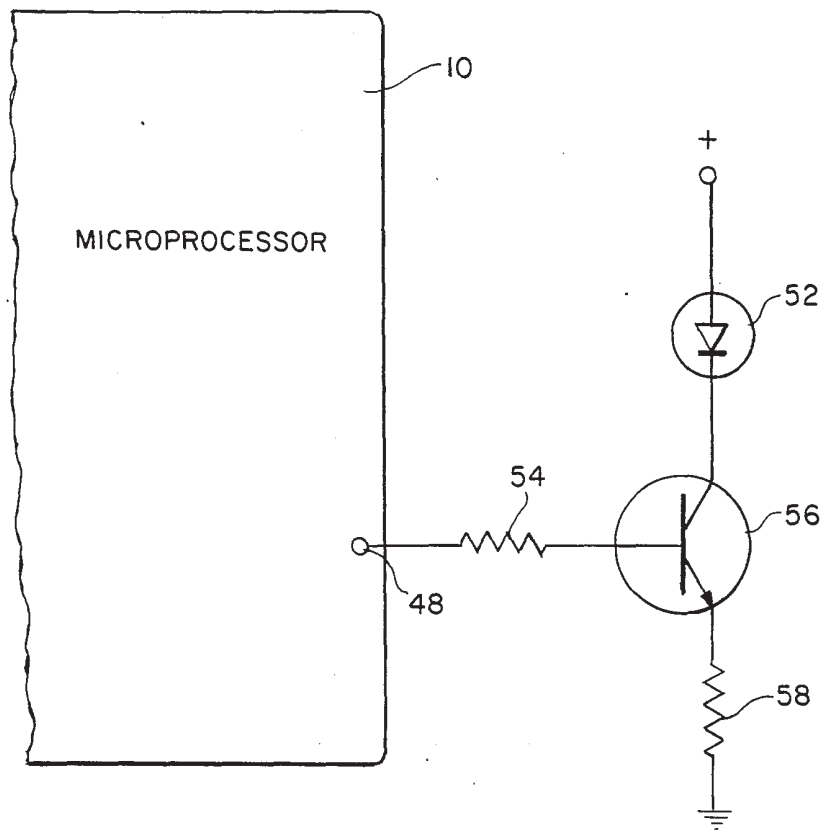


FIG. 3

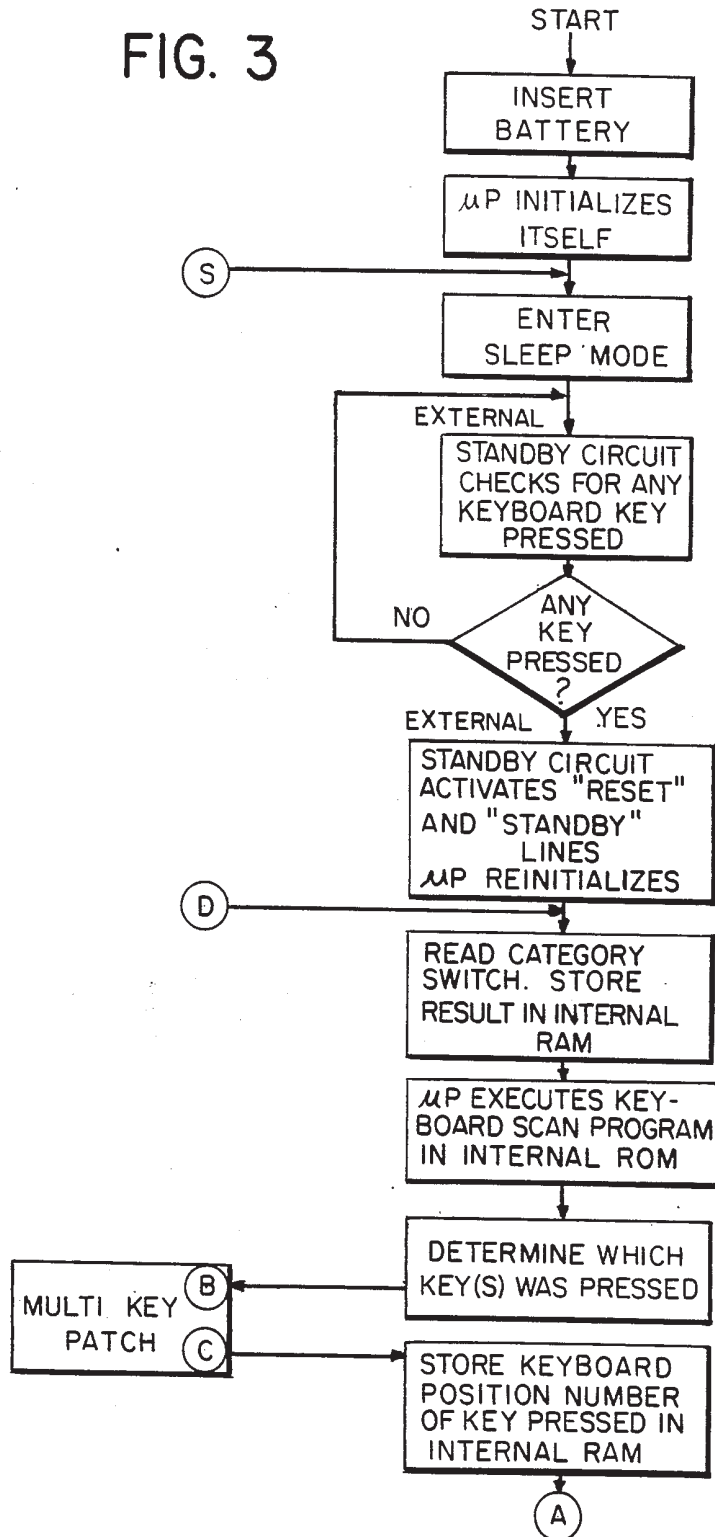
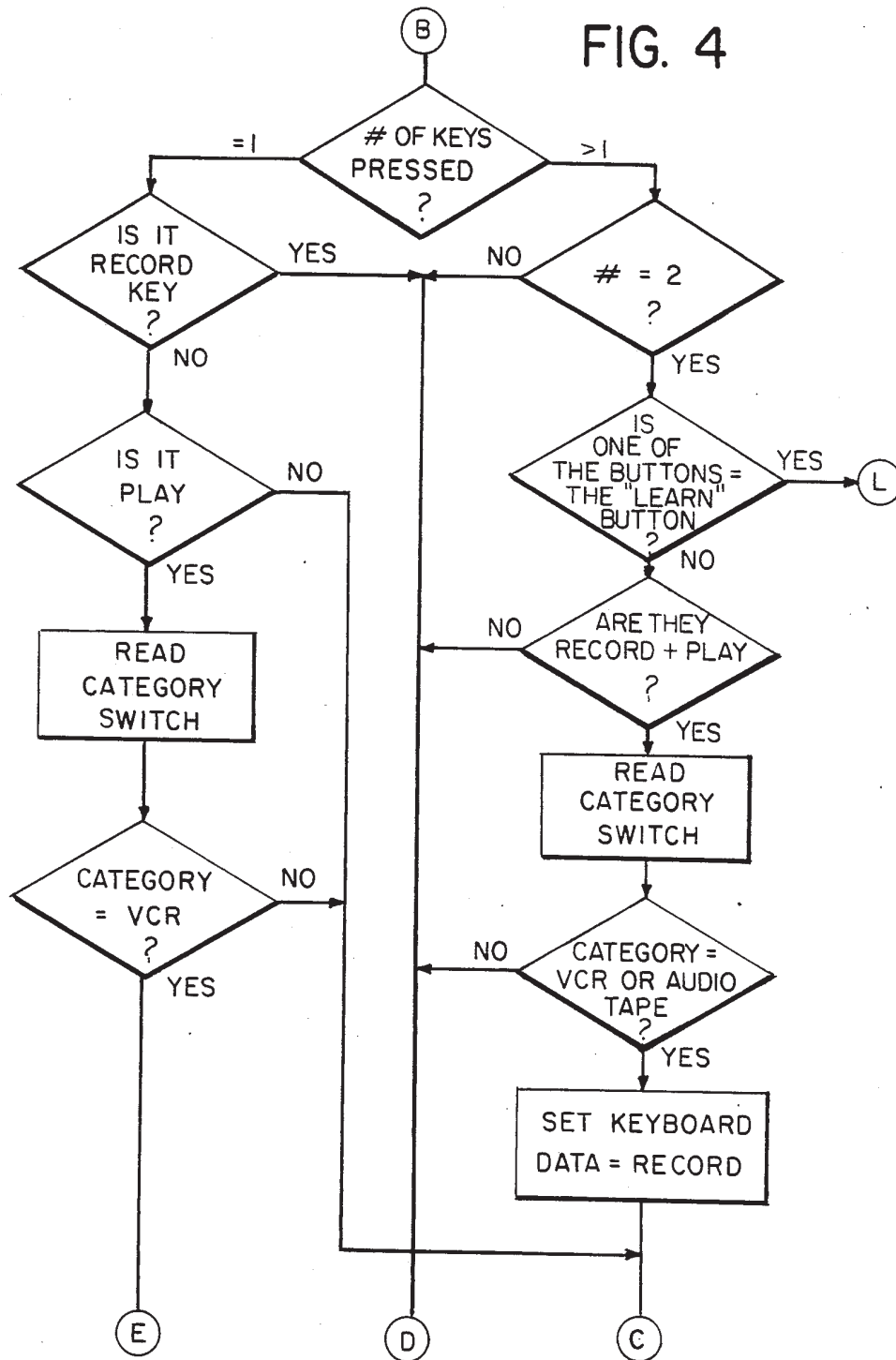


FIG. 4



Explore Litigation Insights

Docket Alarm provides insights to develop a more informed litigation strategy and the peace of mind of knowing you're on top of things.

Real-Time Litigation Alerts



Keep your litigation team up-to-date with **real-time alerts** and advanced team management tools built for the enterprise, all while greatly reducing PACER spend.

Our comprehensive service means we can handle Federal, State, and Administrative courts across the country.

Advanced Docket Research



With over 230 million records, Docket Alarm's cloud-native docket research platform finds what other services can't. Coverage includes Federal, State, plus PTAB, TTAB, ITC and NLRB decisions, all in one place.

Identify arguments that have been successful in the past with full text, pinpoint searching. Link to case law cited within any court document via Fastcase.

Analytics At Your Fingertips



Learn what happened the last time a particular judge, opposing counsel or company faced cases similar to yours.

Advanced out-of-the-box PTAB and TTAB analytics are always at your fingertips.

API

Docket Alarm offers a powerful API (application programming interface) to developers that want to integrate case filings into their apps.

LAW FIRMS

Build custom dashboards for your attorneys and clients with live data direct from the court.

Automate many repetitive legal tasks like conflict checks, document management, and marketing.

FINANCIAL INSTITUTIONS

Litigation and bankruptcy checks for companies and debtors.

E-DISCOVERY AND LEGAL VENDORS

Sync your system to PACER to automate legal marketing.