

[54] APPARATUS AND METHOD FOR INCREASED DATA ACCESS IN A NETWORK FILE ORIENTED CACHING SYSTEM

[75] Inventors: Thomas Patrick Yohe, Centerville; Gordon L. Dorworth, Spring Valley, both of Ohio; Jon J. Penner, Austin; Scott Hertzog, Round Rock, both of Tex.

[73] Assignee: Stampede Technologies, Inc., Dayton, Ohio

[*] Notice: The term of this patent shall not extend beyond the expiration date of Pat. No. 5,682,514.

[21] Appl. No.: 888,311

[22] Filed: Jul. 3, 1997

Related U.S. Application Data

[63] Continuation-in-part of Ser. No. 565,393, Nov. 30, 1995, Pat. No. 5,682,514.

[51] Int. Cl.⁶ G06F 12/08

[52] U.S. Cl. 711/118; 711/122; 395/200.33; 395/200.09

[58] Field of Search 395/200.47, 200.49, 395/200.33, 200.09; 711/144, 118, 122

[56] References Cited

U.S. PATENT DOCUMENTS

- 4,410,944 10/1983 Kronies 711/147
5,222,224 6/1993 Flynn et al. 711/144

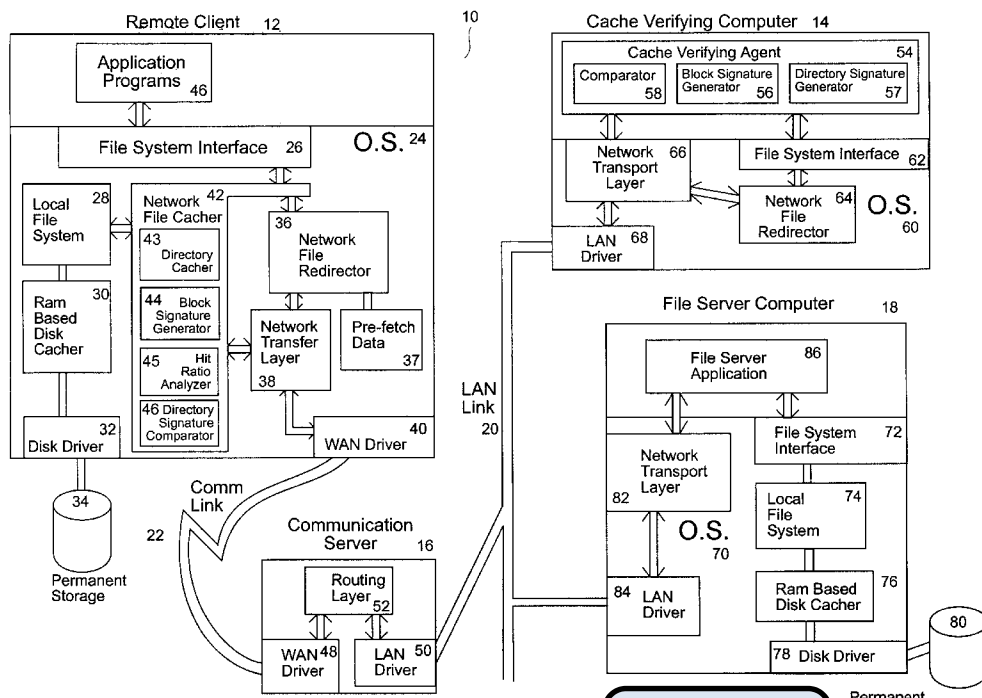
- 5,226,143 7/1993 Baird et al. 711/145
5,261,069 11/1993 Wilkinson et al. 711/145
5,274,787 12/1993 Hirano et al. 711/143
5,276,835 1/1994 Mohan et al. 711/144
5,297,269 3/1994 Donaldson et al. 711/145
5,301,290 4/1994 Tetzaff et al. 711/142
5,394,555 2/1995 Hunter et al. 711/148
5,404,483 4/1995 Stamm et al. 711/144
5,428,761 6/1995 Herlihy et al. 711/130
5,452,447 9/1995 Nelson et al. 707/205

Primary Examiner—Krisna Lim
Attorney, Agent, or Firm—R. William Graham

[57] ABSTRACT

An apparatus for increased data access in a network includes a file server computer having a permanent storage memory, a cache verifying computer operably connected to the file server computer in a manner to form a network for rapidly transferring data, the cache verifying computer having an operating system, a first memory and a processor with means for performing an operation on data stored in the permanent storage memory of the file server computer to produce a signature of the data characteristic of one of a file and directory, a remote client computer having an operating system, a first memory, a cache memory and a processor with means for performing an operation on data stored in the cache memory to produce a signature of the data, a communication server operably connected to the remote client computer to the cache verifying computer and the file server computer and comparators operably associated with the cache verifying computer and remote client computer for comparing the signatures of data with one another to determine whether the signature of data of the remote client is valid.

12 Claims, 12 Drawing Sheets



Related Art

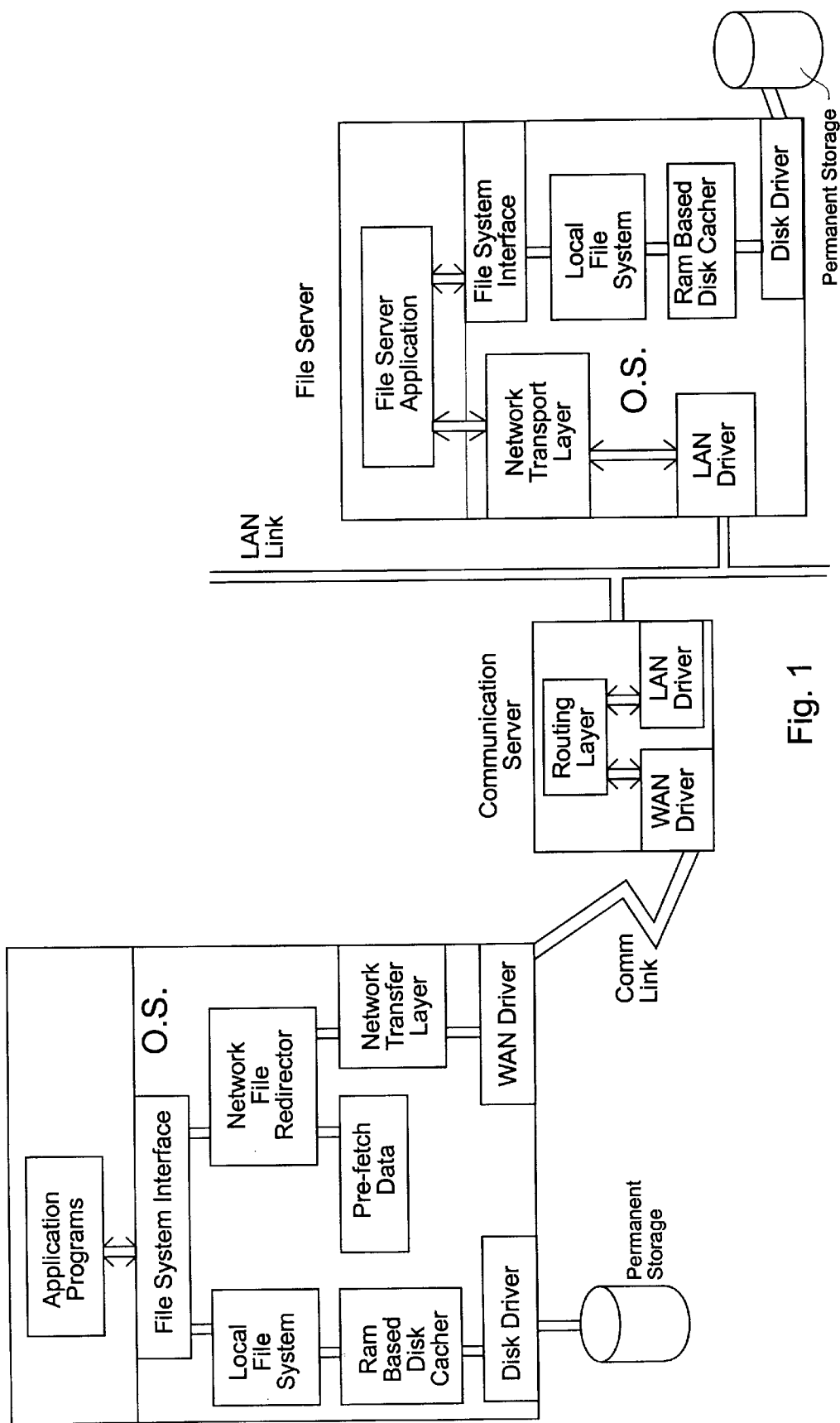


Fig. 1

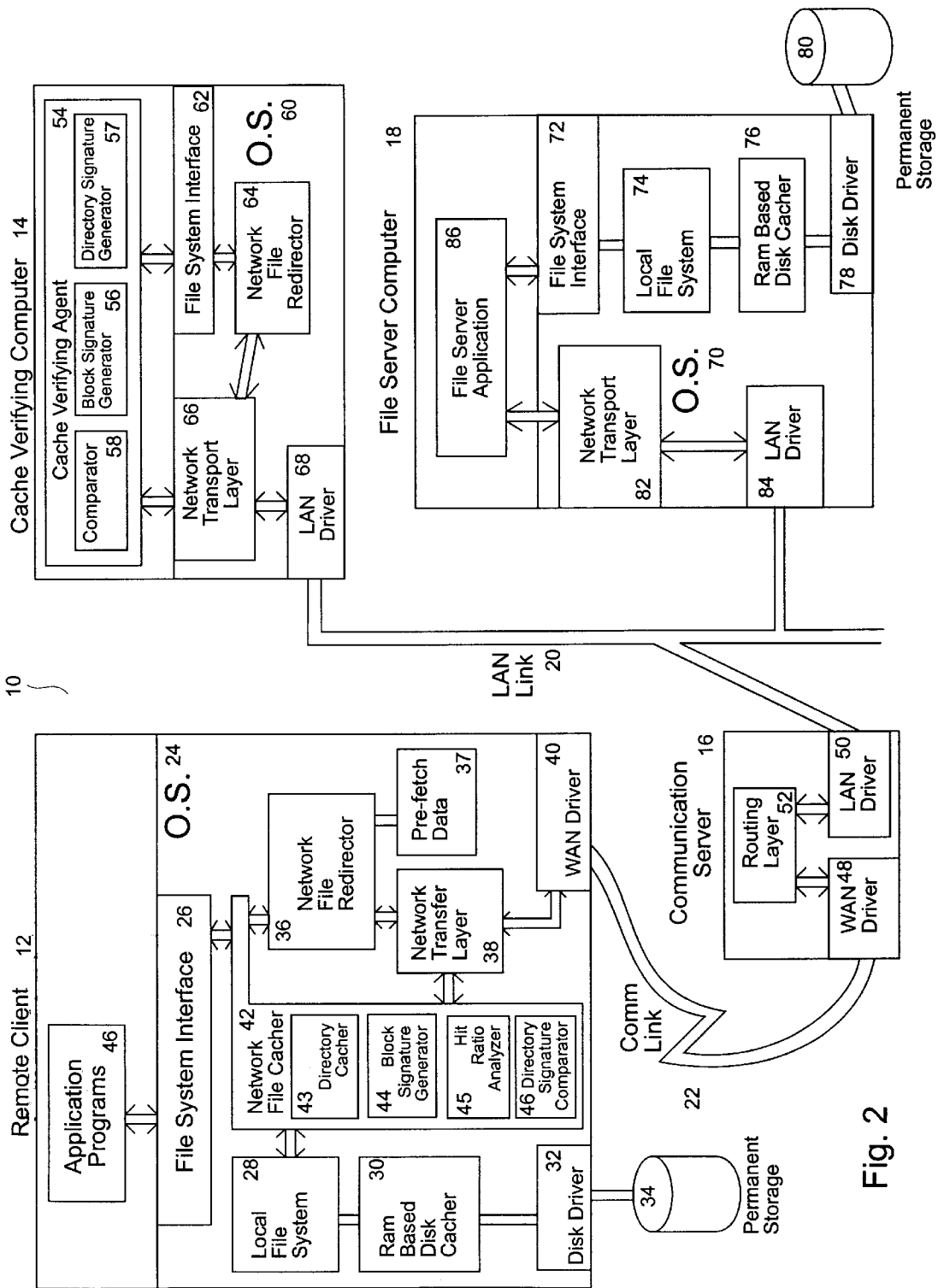


Fig. 2

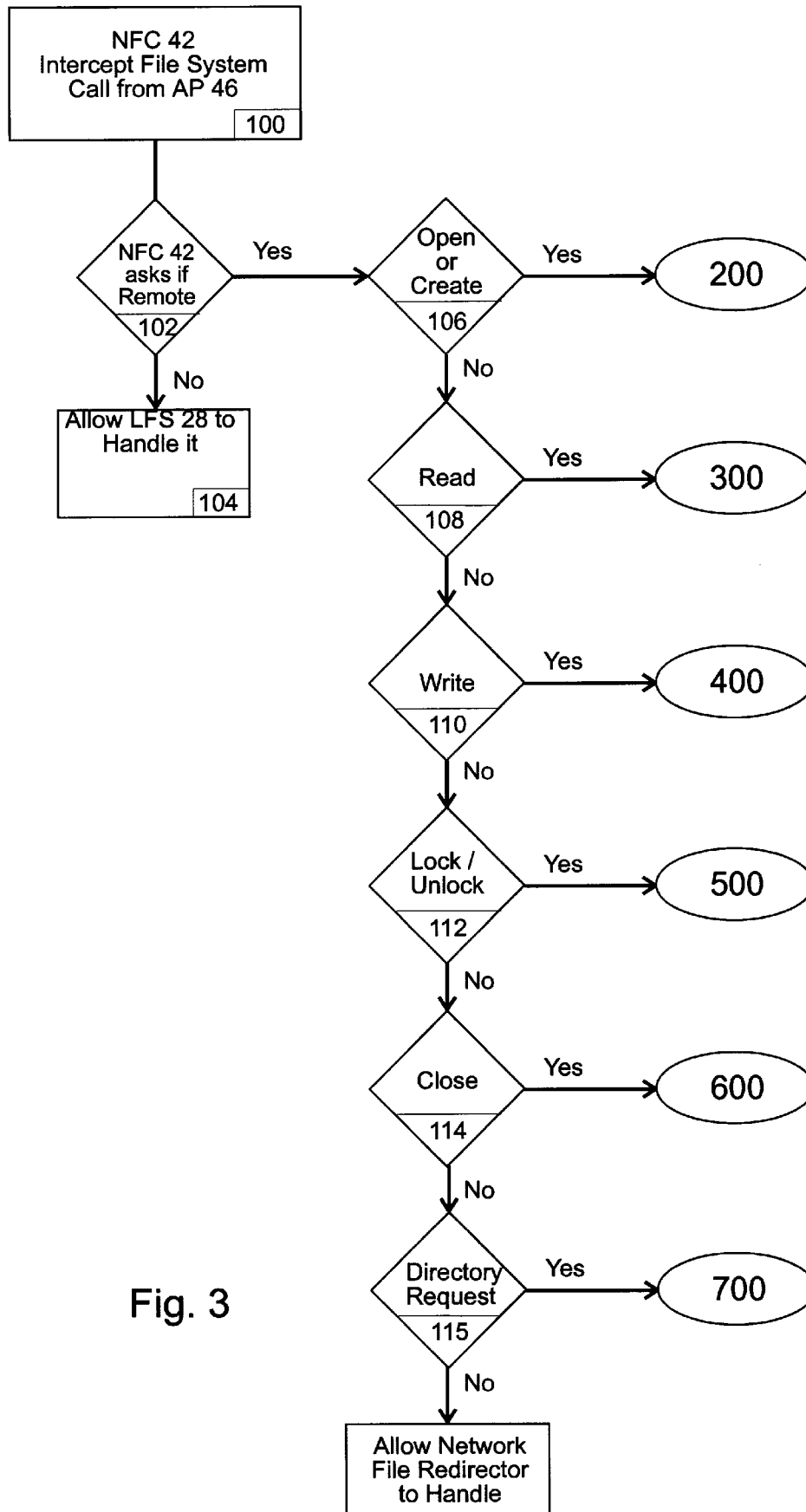


Fig. 3

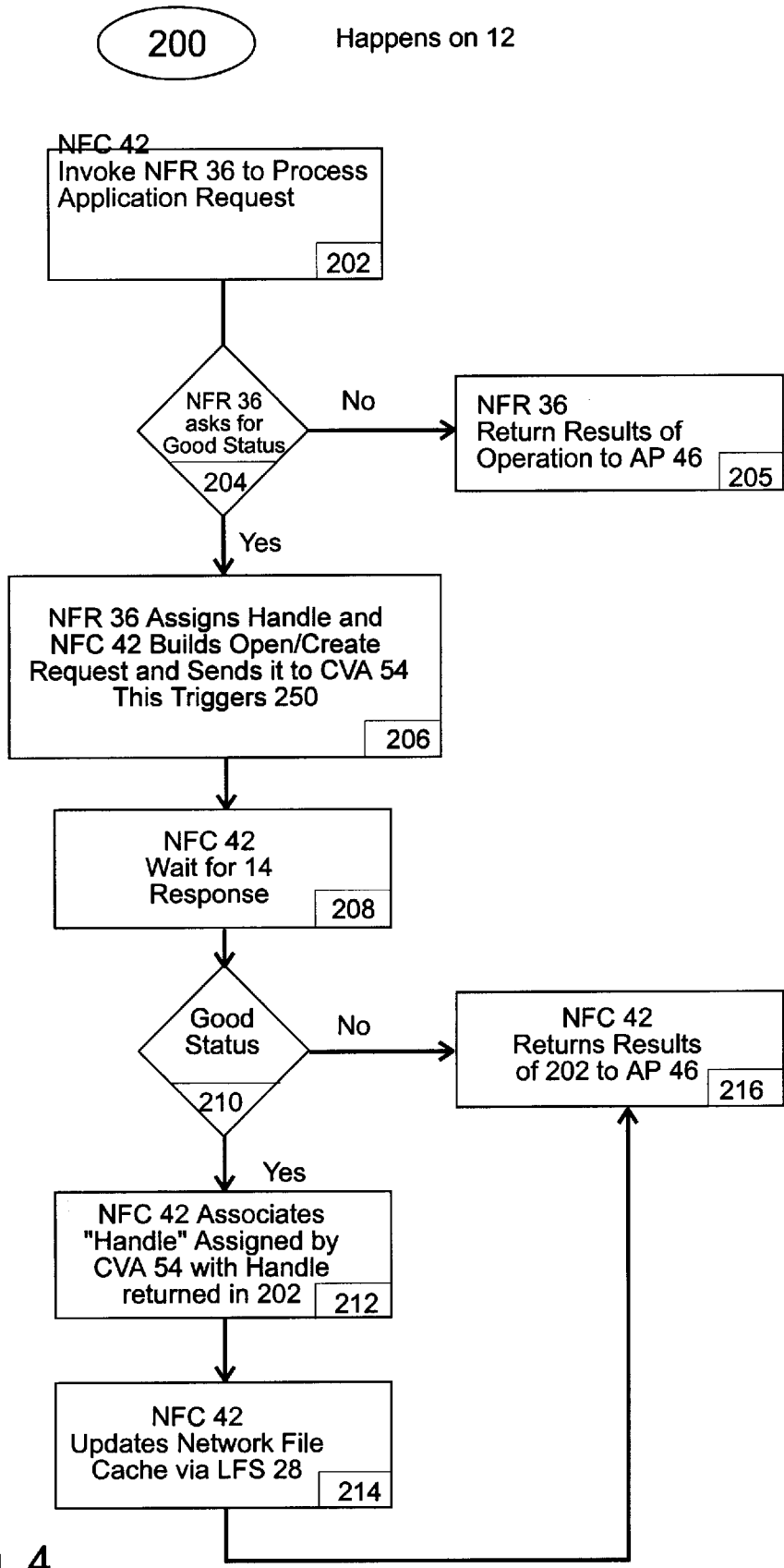


Fig. 4

Explore Litigation Insights

Docket Alarm provides insights to develop a more informed litigation strategy and the peace of mind of knowing you're on top of things.

Real-Time Litigation Alerts



Keep your litigation team up-to-date with **real-time alerts** and advanced team management tools built for the enterprise, all while greatly reducing PACER spend.

Our comprehensive service means we can handle Federal, State, and Administrative courts across the country.

Advanced Docket Research



With over 230 million records, Docket Alarm's cloud-native docket research platform finds what other services can't. Coverage includes Federal, State, plus PTAB, TTAB, ITC and NLRB decisions, all in one place.

Identify arguments that have been successful in the past with full text, pinpoint searching. Link to case law cited within any court document via Fastcase.

Analytics At Your Fingertips



Learn what happened the last time a particular judge, opposing counsel or company faced cases similar to yours.

Advanced out-of-the-box PTAB and TTAB analytics are always at your fingertips.

API

Docket Alarm offers a powerful API (application programming interface) to developers that want to integrate case filings into their apps.

LAW FIRMS

Build custom dashboards for your attorneys and clients with live data direct from the court.

Automate many repetitive legal tasks like conflict checks, document management, and marketing.

FINANCIAL INSTITUTIONS

Litigation and bankruptcy checks for companies and debtors.

E-DISCOVERY AND LEGAL VENDORS

Sync your system to PACER to automate legal marketing.