



[54] **UNIQUE-CHANGE DETECTION OF DYNAMIC WEB PAGES USING HISTORY TABLES OF SIGNATURES**

5,898,836 4/1999 Freivald 709/218
5,923,880 7/1999 Rose et al. 395/705

[75] Inventors: **Matthew P. Freivald**, Sunnyvale; **Alan C. Noble**, Santa Cruz, both of Calif.

Primary Examiner—Zarni Maung
Assistant Examiner—Khanh Quang Dinh
Attorney, Agent, or Firm—Stuart T. Auvinen

[73] Assignee: **NetMind Technologies, Inc.**, Cambell, Calif.

[57] **ABSTRACT**

[21] Appl. No.: **09/081,991**

[22] Filed: **May 20, 1998**

An improved change-detection tool detects only relevant changes within Internet web pages on the world-wide-web. Changes back to an earlier version of a web page are not relevant and do not cause the user to be notified. Only changes to a new, unique version of the web page generate a user notification. After the user finishes registering the web page by specifying the URL and the user's e-mail address, the change-detection tool periodically retrieves the web-page at the specified URL and generates a checksum or signature to determine when to send a notification to the user. Signatures from several older versions of the web page are stored in a history table. When a new signature for a re-fetched page matches the most-recent signature at the top of the stack in the history table, no change has occurred. When the new signature matched any of the older signatures in the history table, the detected change is not unique and notification is not made even though a change has occurred. When the new signature matches one of the older, not-most-recent signatures in the history table, the signature is moved into a permanent history table. Signatures in the permanent history table are for recurring versions of the web page and are likely to appear again. Error pages displayed when a web server is down for routine maintenance can be screened out using the history table. The frequency of notifications is tracked. When too many notifications are being sent for a web page, the last-modified header is used rather than signature-matching to reduce the frequency of notifications.

Related U.S. Application Data

[63] Continuation-in-part of application No. 08/783,625, Jan. 14, 1997, Pat. No. 5,898,836.

[51] **Int. Cl.**⁷ **H04L 12/00**

[52] **U.S. Cl.** **709/218; 709/229; 709/201**

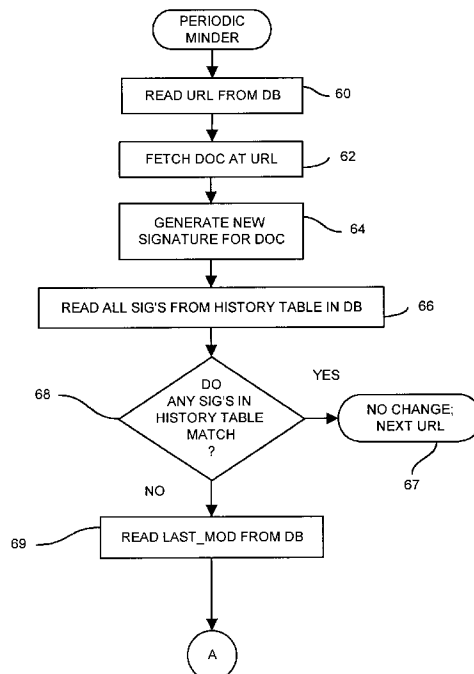
[58] **Field of Search** **709/218, 229, 709/224, 226, 201; 395/705; 380/21, 25, 29, 4; 705/8**

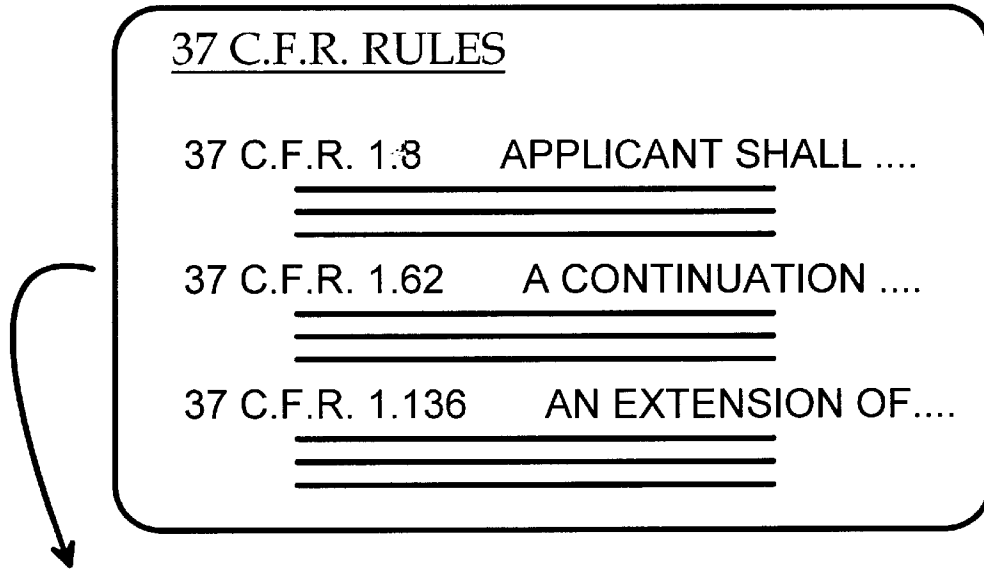
[56] **References Cited**

U.S. PATENT DOCUMENTS

5,109,486	4/1992	Seymour	709/224
5,204,897	4/1993	Wyman	380/4
5,249,261	9/1993	Natarajan	706/46
5,260,999	11/1993	Wyman	380/4
5,438,508	8/1995	Wyman	705/8
5,574,906	11/1996	Morris	707/1
5,596,750	1/1997	Li et al.	709/101
5,666,502	9/1997	Capps	345/352
5,671,282	9/1997	Wolff et al.	380/25
5,715,453	2/1998	Stewart	707/104
5,835,726	11/1998	Shwed et al.	709/229

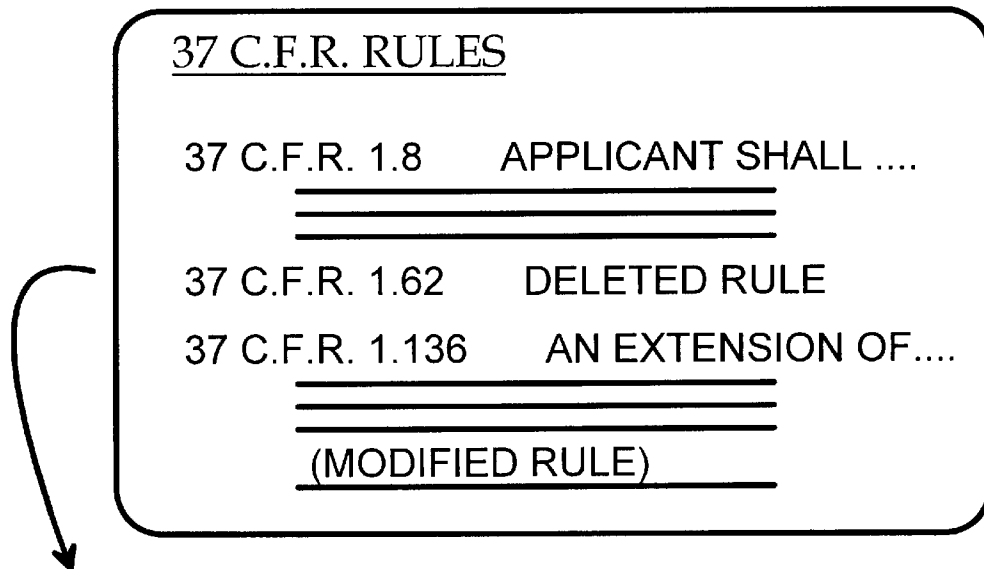
20 Claims, 14 Drawing Sheets





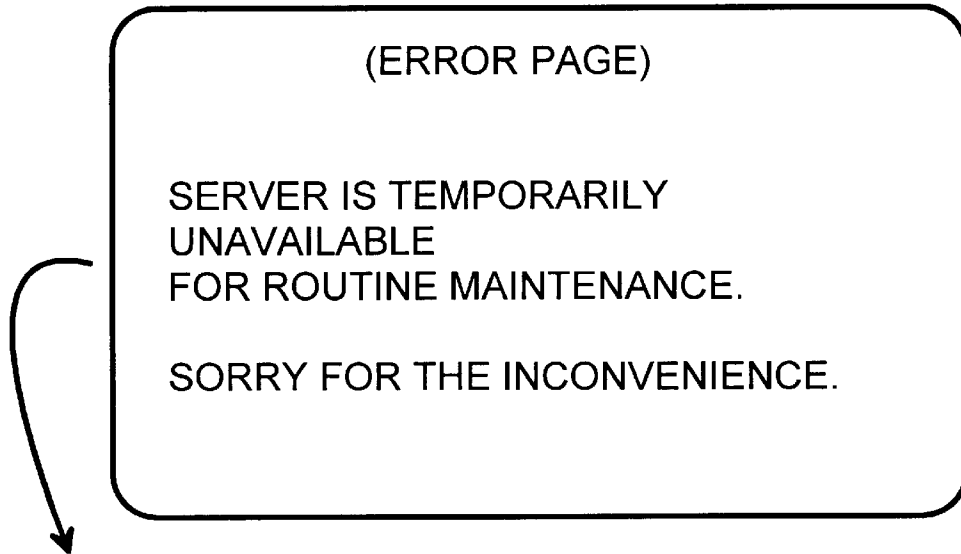
DOC SIGNATURE = 5A7

FIG. 1



DOC SIGNATURE = D6F
CHANGE DETECTED

FIG. 2



DOC SIGNATURE = EB9

FIG. 3

CHANGE DETECTED
IS NOT RELEVANT

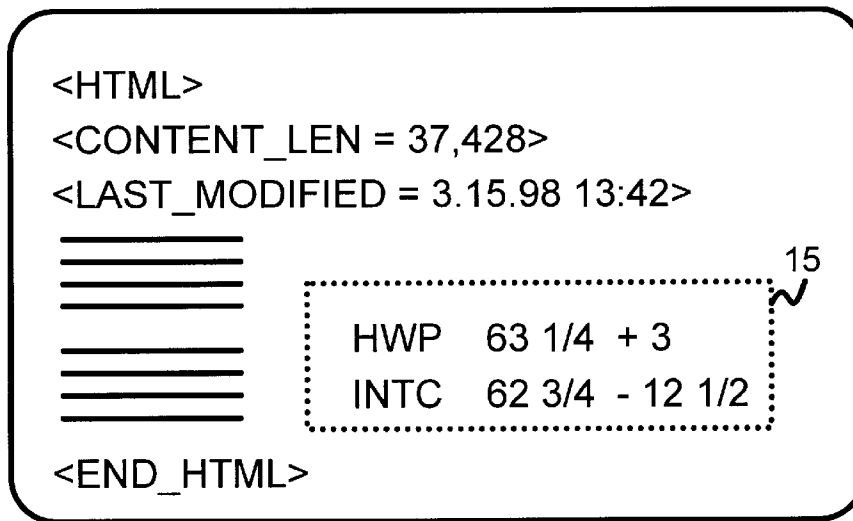


FIG. 4

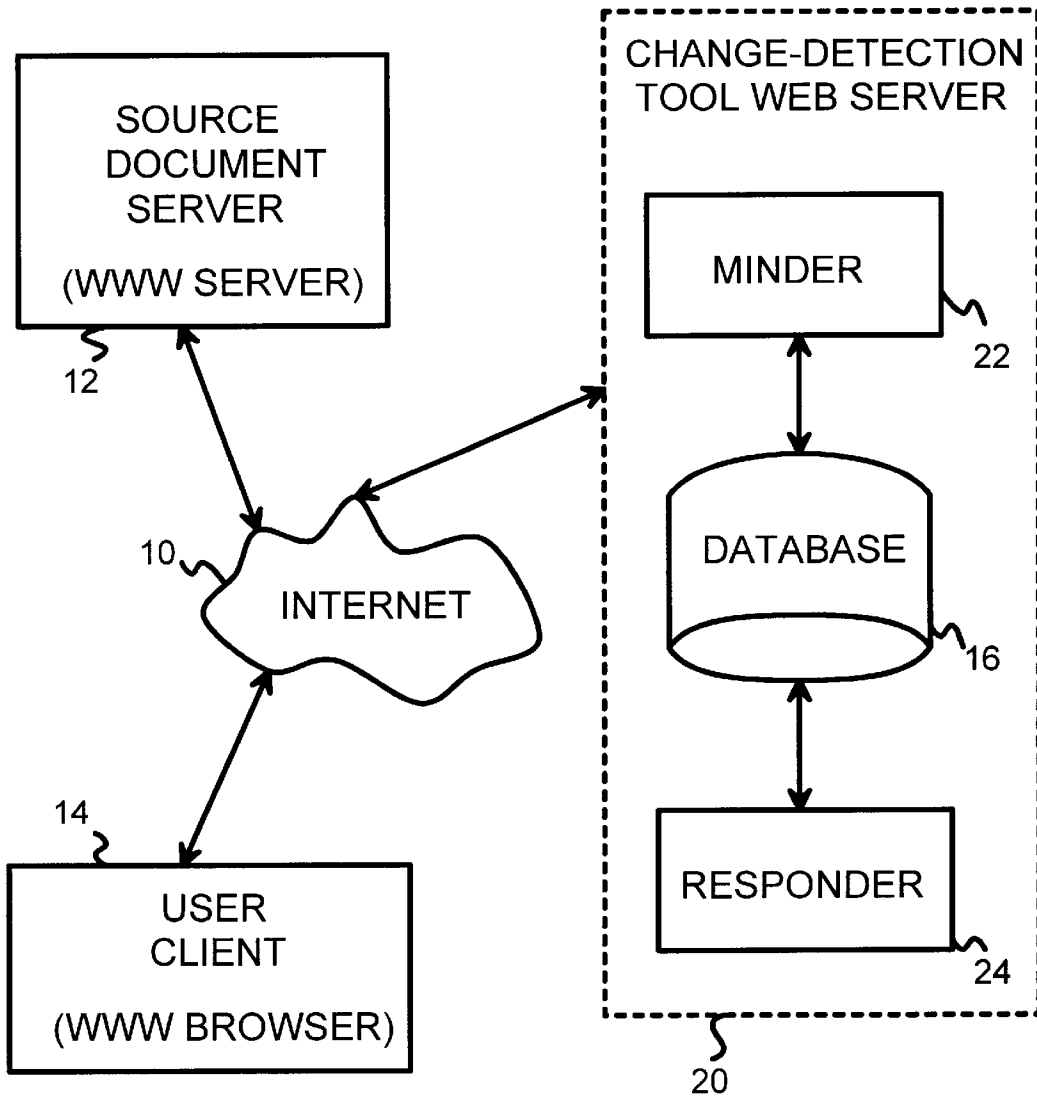


FIG. 5

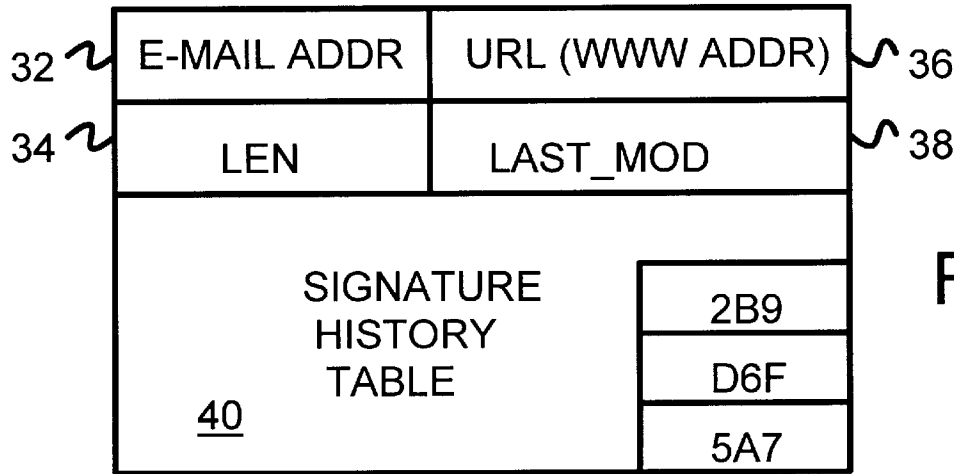


FIG. 6

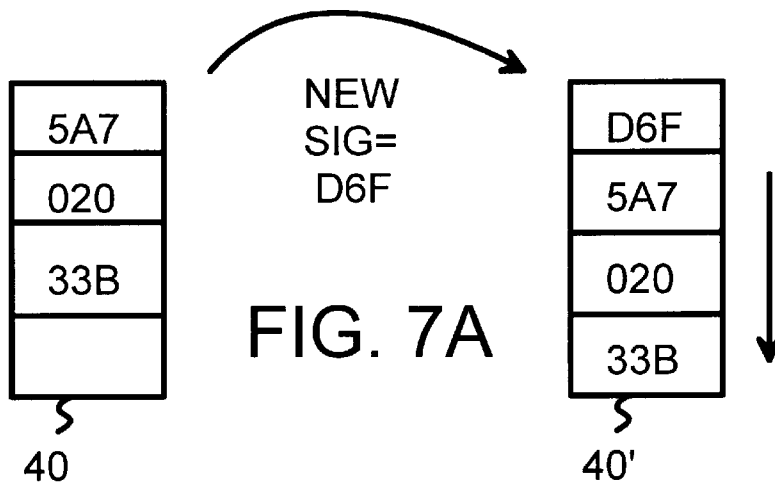


FIG. 7A

Explore Litigation Insights

Docket Alarm provides insights to develop a more informed litigation strategy and the peace of mind of knowing you're on top of things.

Real-Time Litigation Alerts



Keep your litigation team up-to-date with **real-time alerts** and advanced team management tools built for the enterprise, all while greatly reducing PACER spend.

Our comprehensive service means we can handle Federal, State, and Administrative courts across the country.

Advanced Docket Research



With over 230 million records, Docket Alarm's cloud-native docket research platform finds what other services can't. Coverage includes Federal, State, plus PTAB, TTAB, ITC and NLRB decisions, all in one place.

Identify arguments that have been successful in the past with full text, pinpoint searching. Link to case law cited within any court document via Fastcase.

Analytics At Your Fingertips



Learn what happened the last time a particular judge, opposing counsel or company faced cases similar to yours.

Advanced out-of-the-box PTAB and TTAB analytics are always at your fingertips.

API

Docket Alarm offers a powerful API (application programming interface) to developers that want to integrate case filings into their apps.

LAW FIRMS

Build custom dashboards for your attorneys and clients with live data direct from the court.

Automate many repetitive legal tasks like conflict checks, document management, and marketing.

FINANCIAL INSTITUTIONS

Litigation and bankruptcy checks for companies and debtors.

E-DISCOVERY AND LEGAL VENDORS

Sync your system to PACER to automate legal marketing.