



- [54] **METHOD AND APPARATUS FOR DETECTING THE PRESENCE OF A REMOTE DEVICE AND PROVIDING POWER THERETO**
- [75] Inventors: **Wen F. Chang**, Saratoga; **Fang C. Yu**, Fremont, both of Calif.
- [73] Assignee: **Clarinet Systems, Inc.**, San Jose, Calif.
- [21] Appl. No.: **08/872,977**
- [22] Filed: **Jun. 11, 1997**
- [51] Int. Cl.<sup>6</sup> ..... **G06F 1/26**
- [52] U.S. Cl. .... **713/300; 710/62**
- [58] Field of Search ..... 395/750.01, 750.08, 395/200; 713/300; 710/62

5,802,305	9/1998	McKaughan et al. ....	395/750.02
5,805,904	9/1998	Jung .....	395/750.01
5,845,150	12/1998	Henion .....	395/750.08

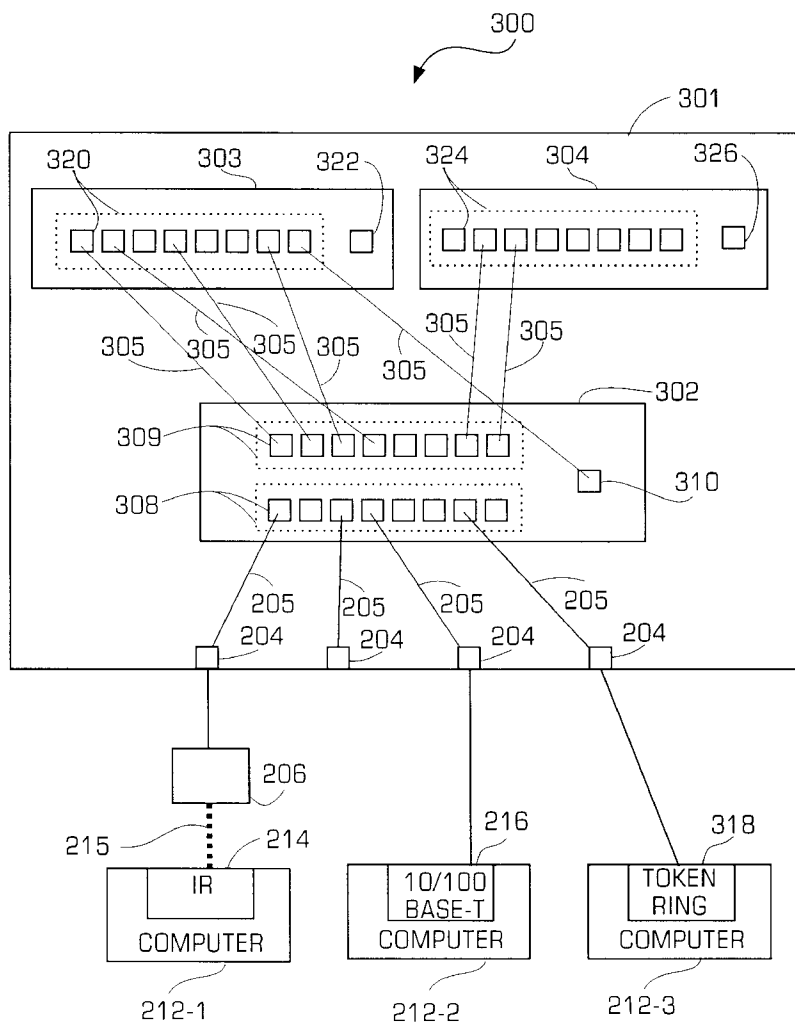
Primary Examiner—Glenn A. Auve  
 Assistant Examiner—David A. Wiley  
 Attorney, Agent, or Firm—Gray, Cary, Ware & Freidenrich

[57] **ABSTRACT**

A network system includes a network that detects the presence of a remote terminal connected to a network and determines the functional protocol of the remote terminal. If the remote terminal is an infrared adapter, the network hub provides electrical power to the infrared adapter and continually monitors for the presence of the infrared adapter. Upon removal of the infrared adapter, the network removes electrical power that is applied to a user interface connector that connects to the infrared adapter. If another protocol is detected for the remote terminal, the network hub communicates with the remote terminal in that protocol and converts the data to the protocol of the network.

- [56] **References Cited**
- U.S. PATENT DOCUMENTS
- 5,652,893 7/1997 Ben-Meir et al. .... 395/750.01

**18 Claims, 10 Drawing Sheets**



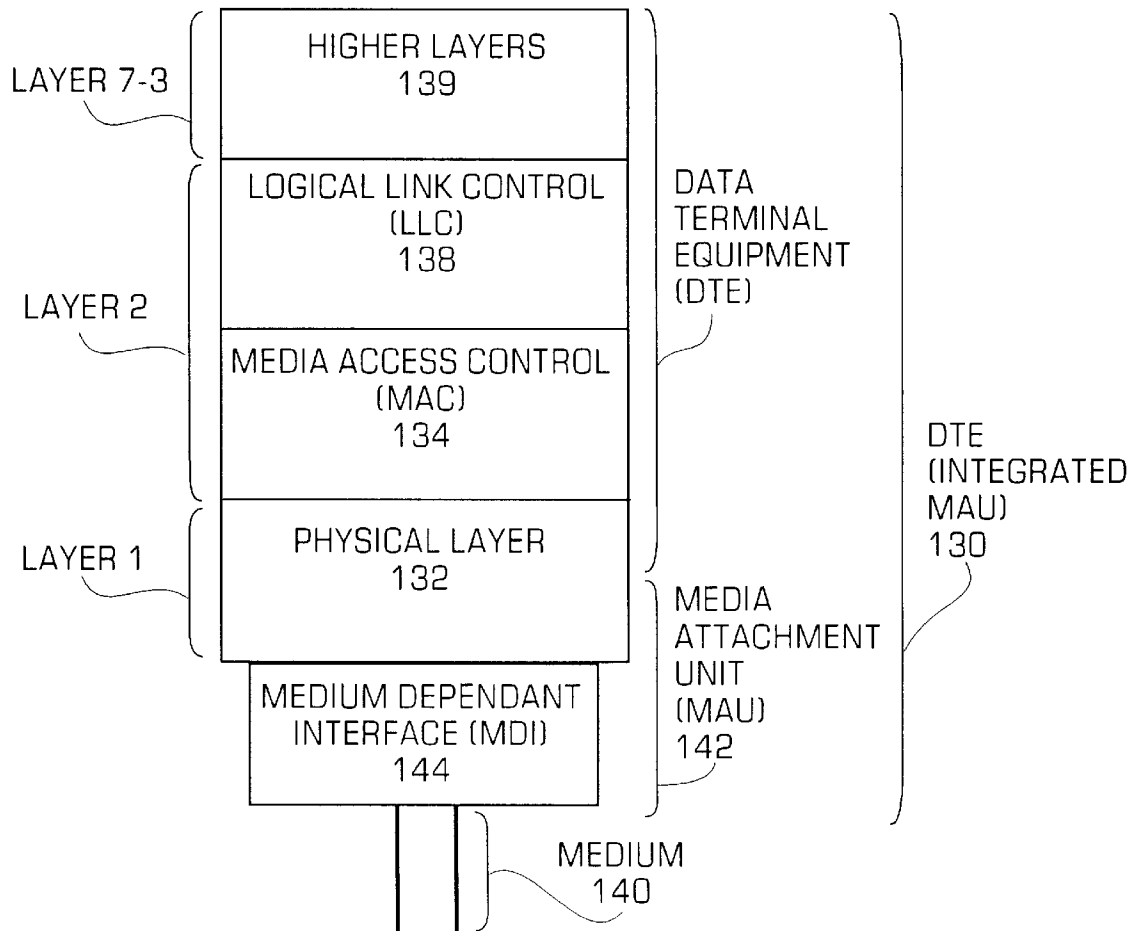


FIGURE 1

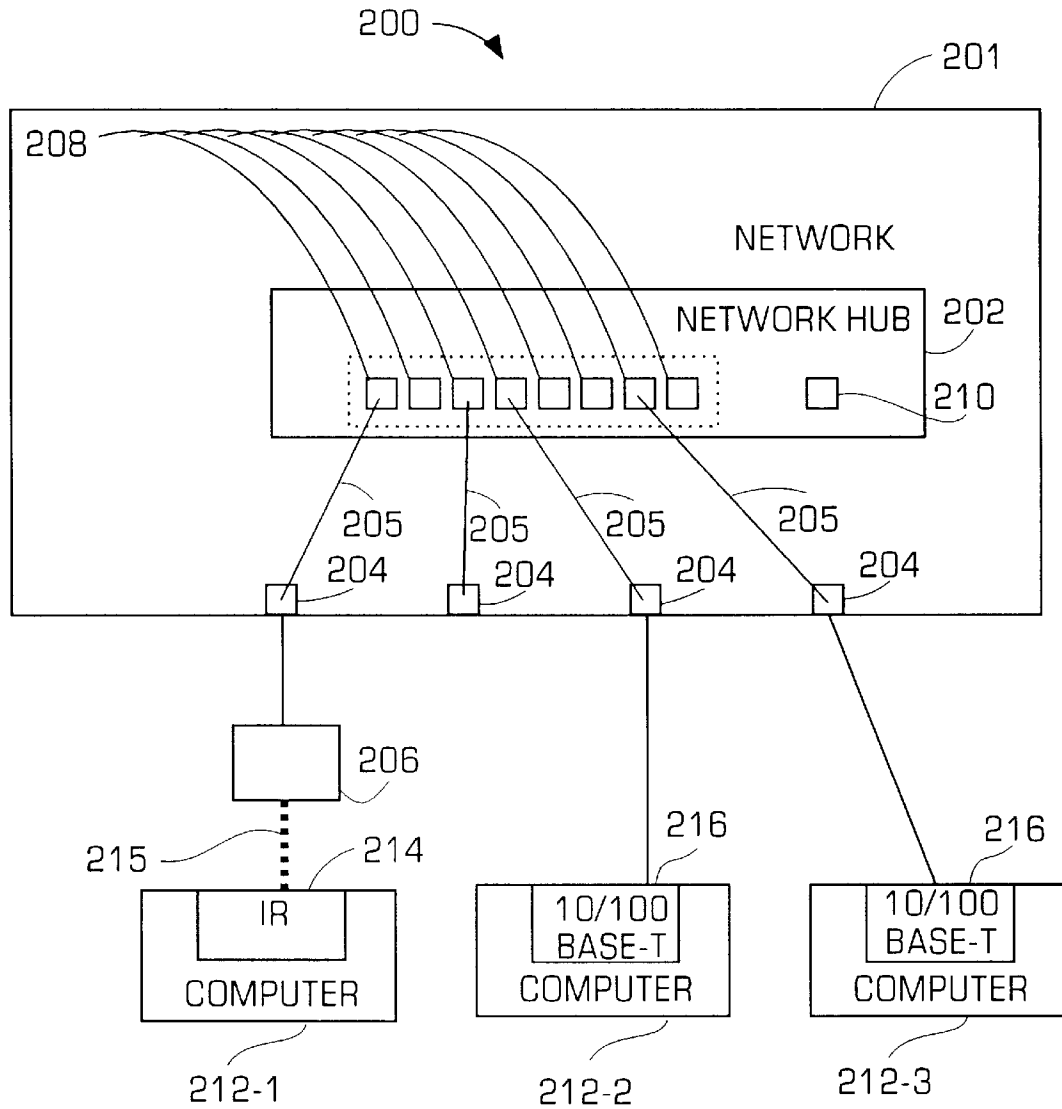


FIGURE 2

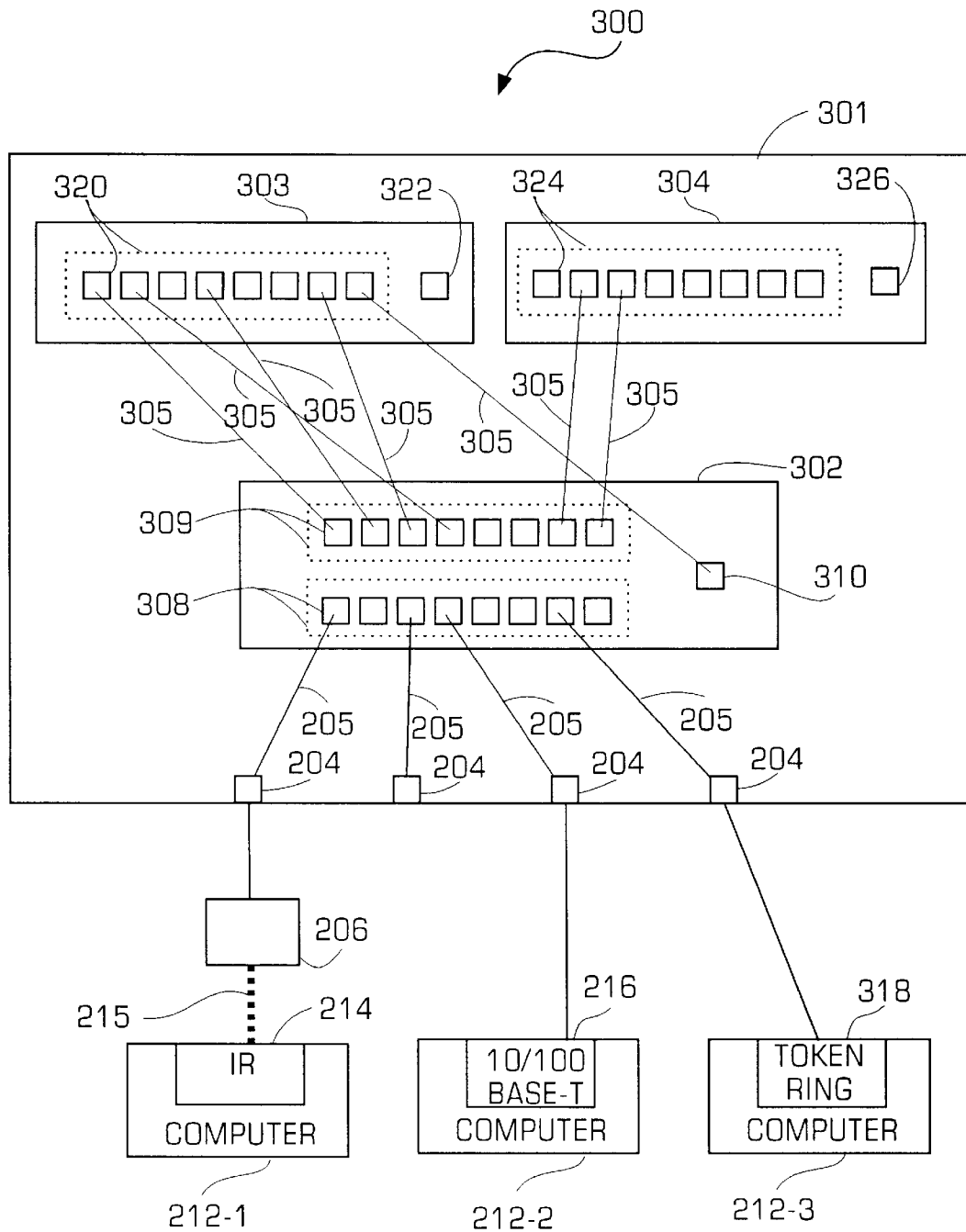


FIGURE 3

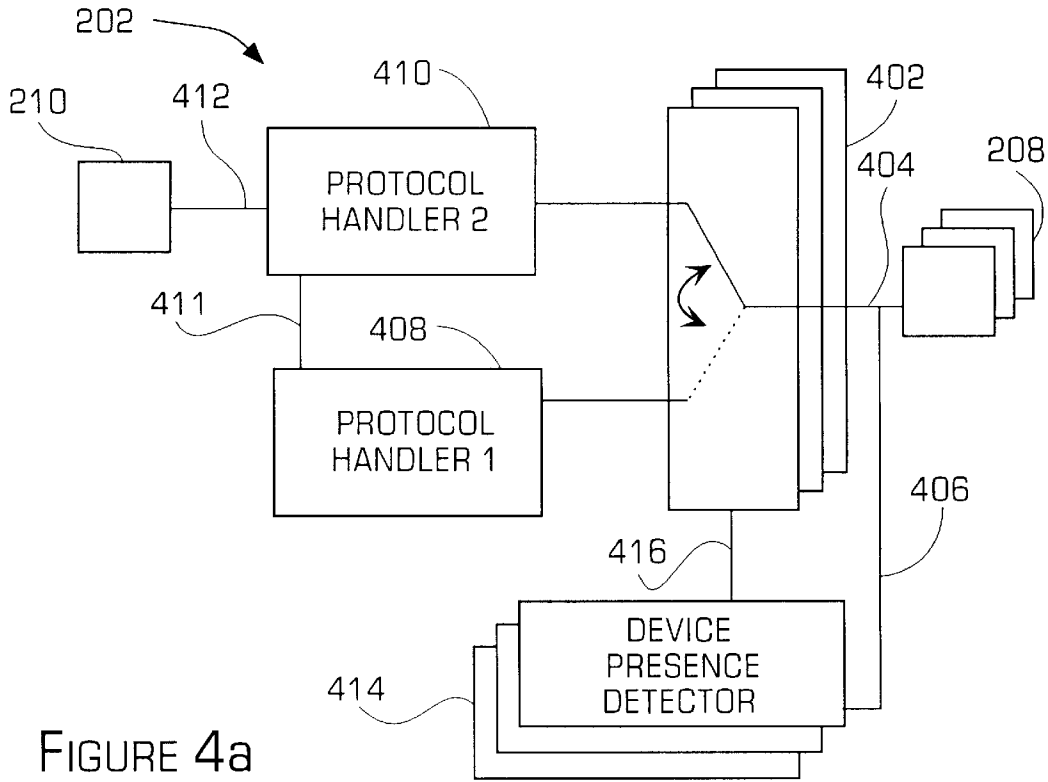


FIGURE 4a

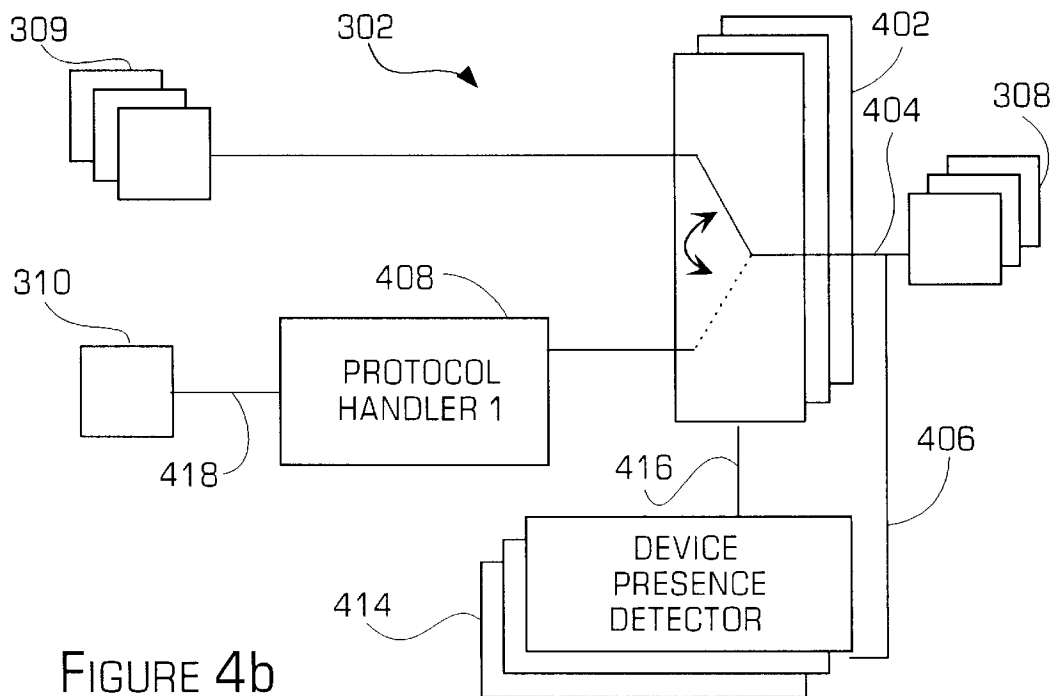


FIGURE 4b

# Explore Litigation Insights

Docket Alarm provides insights to develop a more informed litigation strategy and the peace of mind of knowing you're on top of things.

## Real-Time Litigation Alerts



Keep your litigation team up-to-date with **real-time alerts** and advanced team management tools built for the enterprise, all while greatly reducing PACER spend.

Our comprehensive service means we can handle Federal, State, and Administrative courts across the country.

## Advanced Docket Research



With over 230 million records, Docket Alarm's cloud-native docket research platform finds what other services can't. Coverage includes Federal, State, plus PTAB, TTAB, ITC and NLRB decisions, all in one place.

Identify arguments that have been successful in the past with full text, pinpoint searching. Link to case law cited within any court document via Fastcase.

## Analytics At Your Fingertips



Learn what happened the last time a particular judge, opposing counsel or company faced cases similar to yours.

Advanced out-of-the-box PTAB and TTAB analytics are always at your fingertips.

## API

Docket Alarm offers a powerful API (application programming interface) to developers that want to integrate case filings into their apps.

## LAW FIRMS

Build custom dashboards for your attorneys and clients with live data direct from the court.

Automate many repetitive legal tasks like conflict checks, document management, and marketing.

## FINANCIAL INSTITUTIONS

Litigation and bankruptcy checks for companies and debtors.

## E-DISCOVERY AND LEGAL VENDORS

Sync your system to PACER to automate legal marketing.