

SEL EXHIBIT 2022

INNOLUX CORPORATION v. PATENT OF SEMICONDUCTOR ENERGY
LABORATORY CO., LTD.

IPR2013-00066



US005684555A

United States Patent [19]

Shiba et al.

[11] Patent Number: 5,684,555

[45] Date of Patent: Nov. 4, 1997

[54] LIQUID CRYSTAL DISPLAY PANEL

FOREIGN PATENT DOCUMENTS

[75] Inventors: Konichi Shiba, Himeji; Ryuji Tada, Hyogo-ken, both of Japan

4-178630 6/1992 Japan .

[73] Assignee: Kabushiki Kaisha Toshiba, Kawasaki, Japan

Primary Examiner—William L. Sikes
Assistant Examiner—Julie Ngo
Attorney, Agent, or Firm—Cushman, Darby & Cushman IP Group of Pillsbury Madison & Sutro LLP

[21] Appl. No.: 574,193

[57] ABSTRACT

[22] Filed: Dec. 18, 1995

The present invention is to provide an LCD panel in which the effective display area is great relative to the outside dimension. The LCD panel comprises an array substrate, a counter substrate and a light modulating layer obtained by injecting liquid crystal into the gap between these substrates. The array substrate includes a display area and a seal region formed around the display area. The display area includes data lines, scanning lines, switching devices controlled by the scanning lines and pixel electrodes connected to the data lines. The seal region includes a first wiring line constituted by a plurality of narrow lines and arranged along the seal line. The counter substrate has a counter electrode and is arranged opposite to the array substrate with a gap therebetween. The counter substrate is adhered to the array substrate in the seal region. A voltage is supplied to the counter electrode through the first wiring line.

[30] Foreign Application Priority Data

Dec. 19, 1994 [JP] Japan 6-314825

[51] Int. Cl.⁶ G02F 1/136; G02F 1/1345; G02F 1/1339

[52] U.S. Cl. 349/149; 349/42; 349/153; 349/154

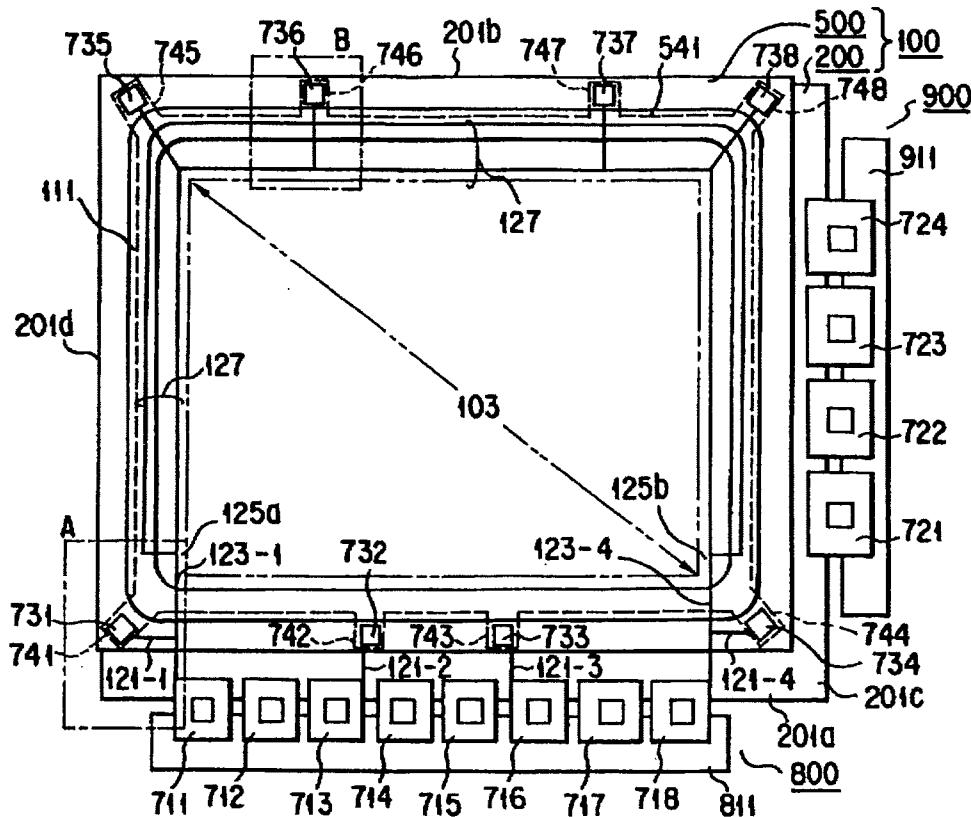
[58] Field of Search 359/88, 80, 59; 349/42, 153, 154, 149

[56] References Cited

U.S. PATENT DOCUMENTS

5,148,301	9/1992	Sawatsubashi et al.	359/80
5,446,562	8/1995	Sato	359/59
5,510,918	4/1996	Matsumaga et al.	359/88
5,519,521	5/1996	Okimoto et al.	359/59

30 Claims, 4 Drawing Sheets



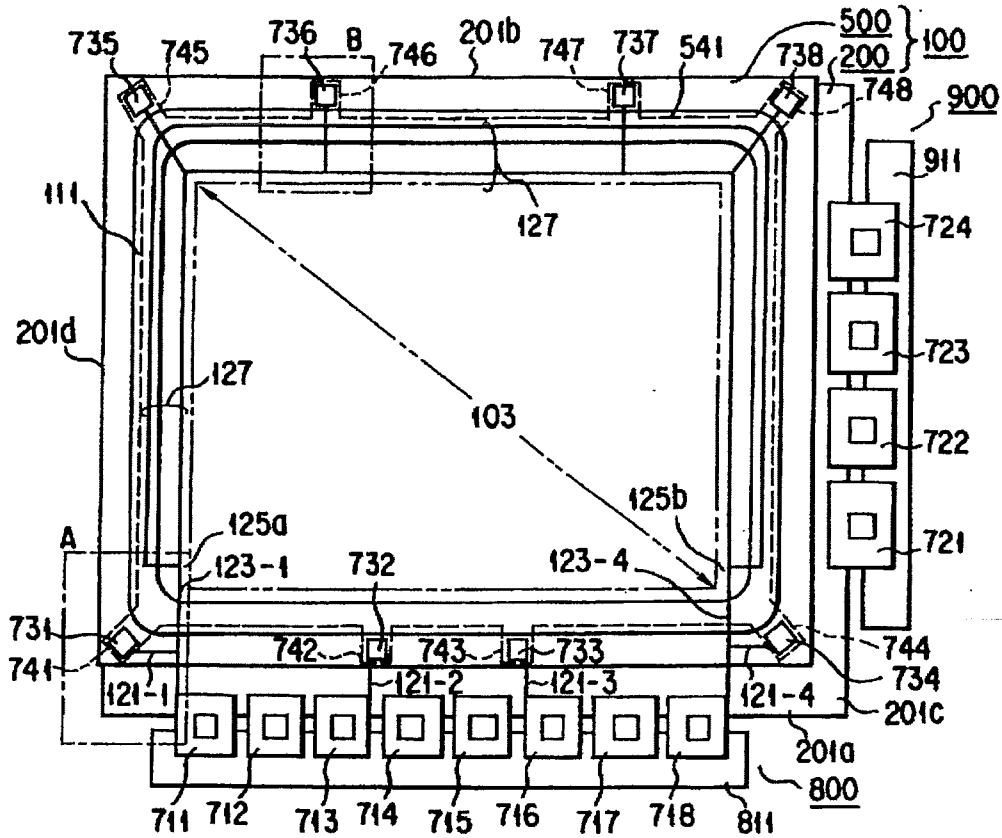


FIG. 1

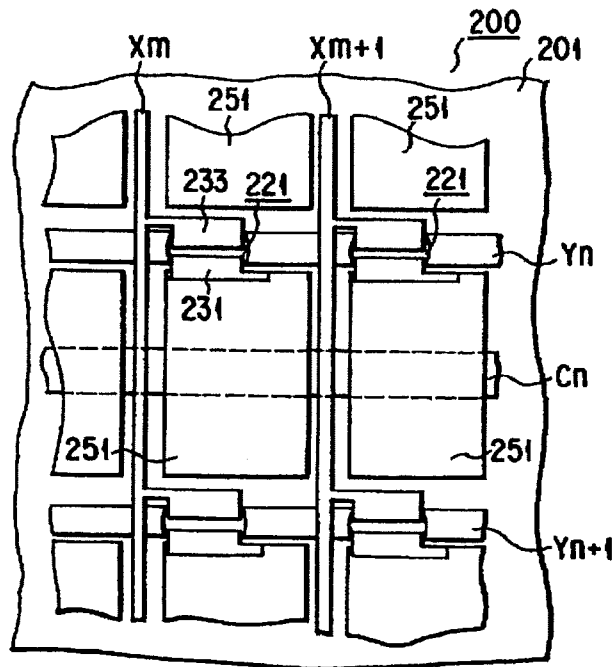


FIG. 2

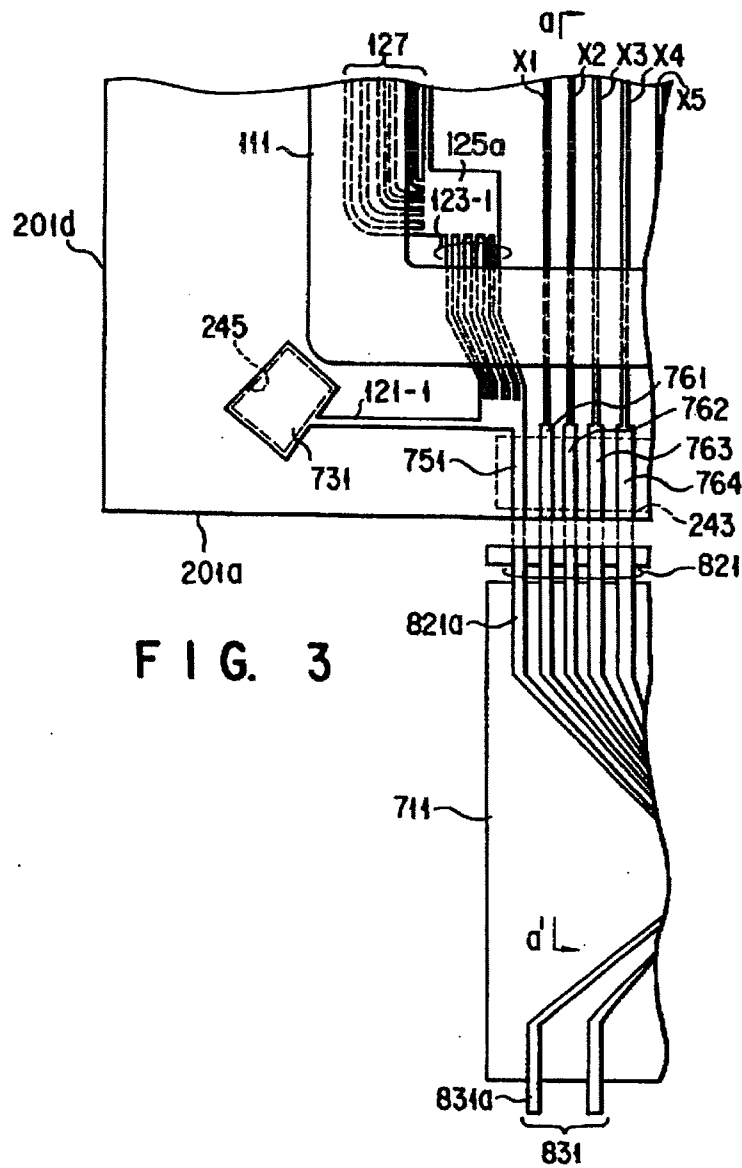


FIG. 3

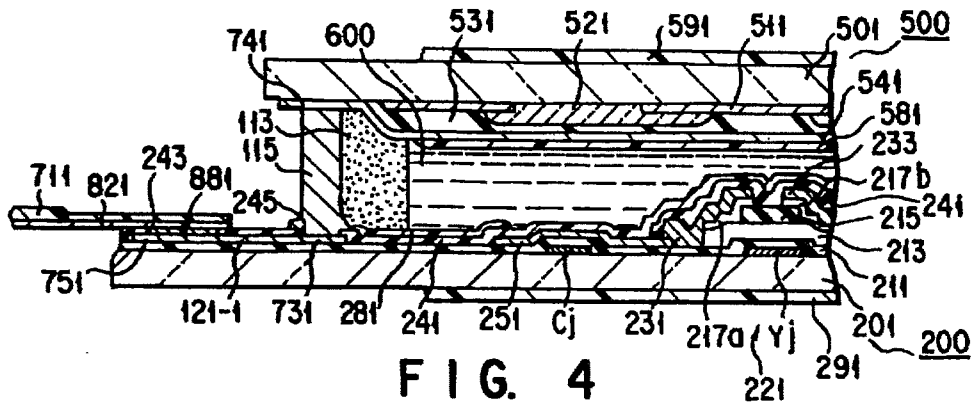


FIG. 4

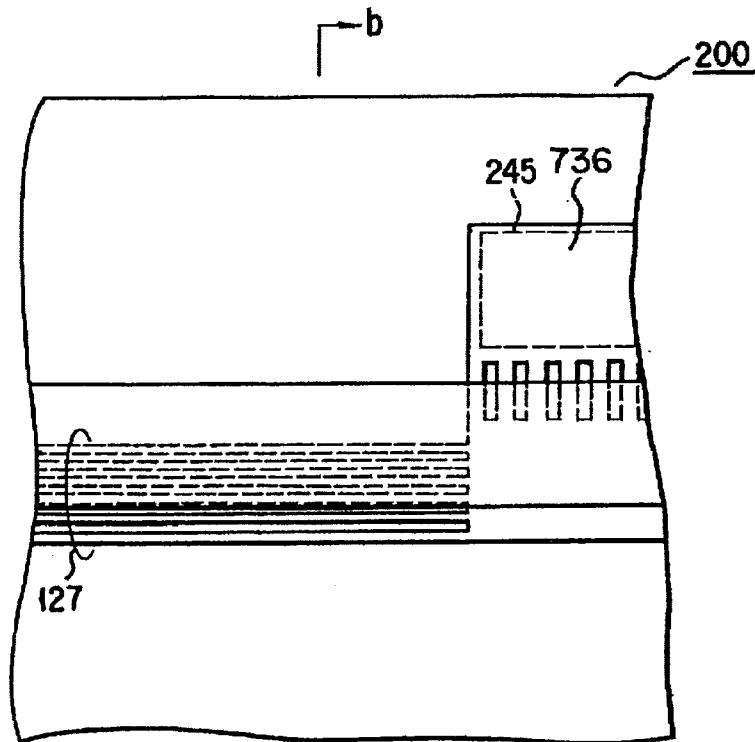


FIG. 5

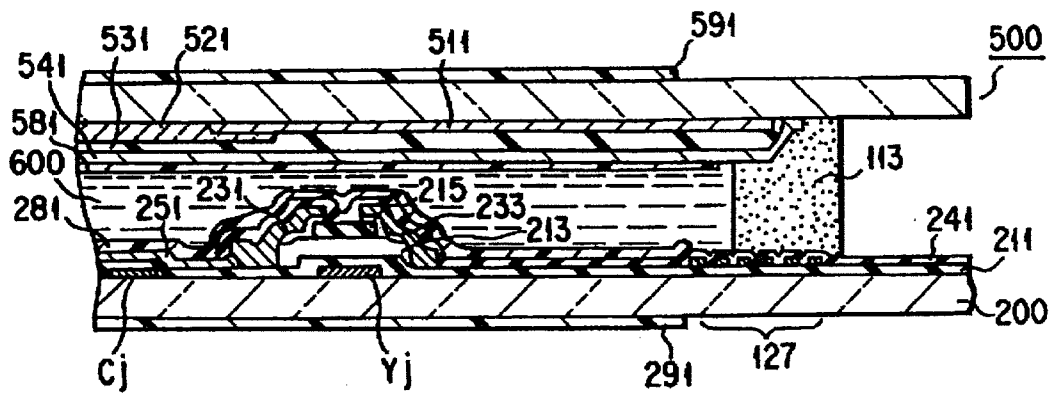


FIG. 6

Explore Litigation Insights

Docket Alarm provides insights to develop a more informed litigation strategy and the peace of mind of knowing you're on top of things.

Real-Time Litigation Alerts



Keep your litigation team up-to-date with **real-time alerts** and advanced team management tools built for the enterprise, all while greatly reducing PACER spend.

Our comprehensive service means we can handle Federal, State, and Administrative courts across the country.

Advanced Docket Research



With over 230 million records, Docket Alarm's cloud-native docket research platform finds what other services can't. Coverage includes Federal, State, plus PTAB, TTAB, ITC and NLRB decisions, all in one place.

Identify arguments that have been successful in the past with full text, pinpoint searching. Link to case law cited within any court document via Fastcase.

Analytics At Your Fingertips



Learn what happened the last time a particular judge, opposing counsel or company faced cases similar to yours.

Advanced out-of-the-box PTAB and TTAB analytics are always at your fingertips.

API

Docket Alarm offers a powerful API (application programming interface) to developers that want to integrate case filings into their apps.

LAW FIRMS

Build custom dashboards for your attorneys and clients with live data direct from the court.

Automate many repetitive legal tasks like conflict checks, document management, and marketing.

FINANCIAL INSTITUTIONS

Litigation and bankruptcy checks for companies and debtors.

E-DISCOVERY AND LEGAL VENDORS

Sync your system to PACER to automate legal marketing.