



US008136971B2

(12) **United States Patent**  
**Hartman**

(10) **Patent No.:** **US 8,136,971 B2**  
(45) **Date of Patent:** **Mar. 20, 2012**

(54) **VEHICULAR LIGHT ASSEMBLY AND ASSOCIATED METHOD FOR REPAIRING THE SAME**

(58) **Field of Classification Search** ..... 362/507, 362/519, 362, 465, 546  
See application file for complete search history.

(76) **Inventor:** **David C. Hartman**, Howard City, MI (US)

(56) **References Cited**

(\*) **Notice:** Subject to any disclaimer, the term of this patent is extended or adjusted under 35 U.S.C. 154(b) by 118 days.

**U.S. PATENT DOCUMENTS**

(21) **Appl. No.:** **11/985,719**

2,587,374	A *	2/1952	Patton	.....	362/507
4,875,956	A *	10/1989	Brackett	.....	156/84
6,059,432	A *	5/2000	Nagayama	.....	362/507
6,398,396	B1 *	6/2002	Nestell et al.	.....	362/520
6,988,305	B1 *	1/2006	Wilson	.....	29/527.1
6,998,174	B2 *	2/2006	Porter et al.	.....	428/318.8
7,637,644	B2 *	12/2009	Yamamoto	.....	362/546
2004/0095779	A1 *	5/2004	Schottland et al.	.....	362/510

(22) **Filed:** **Nov. 16, 2007**

\* cited by examiner

(65) **Prior Publication Data**

US 2008/0273346 A1 Nov. 6, 2008

*Primary Examiner* — John A Ward

**Related U.S. Application Data**

(74) *Attorney, Agent, or Firm* — King & Partners, PLC

(60) Provisional application No. 60/859,573, filed on Nov. 16, 2006, provisional application No. 60/878,480, filed on Jan. 3, 2007.

(57) **ABSTRACT**

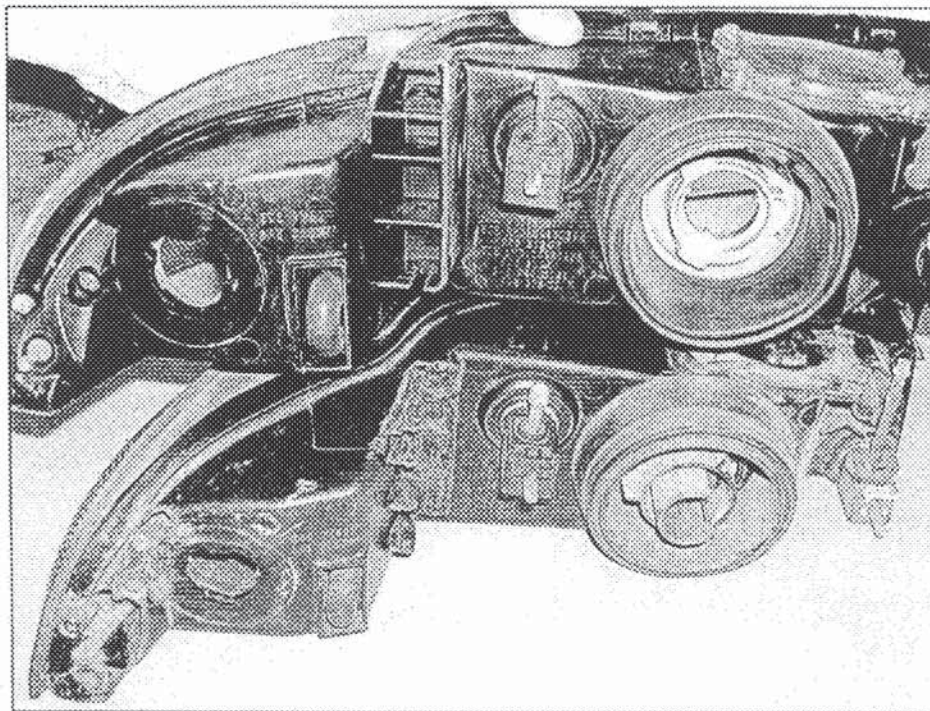
A vehicular light assembly, comprising: a housing and a lens cover, wherein at least one of the housing and lens cover includes at least one previously damaged sub-component which has been repaired utilizing a mold from a vehicular light assembly and/or assembly sub-component void of damage relative to the repaired sub-component.

(51) **Int. Cl.**  
**F21V 33/00** (2006.01)

**8 Claims, 8 Drawing Sheets**

(52) **U.S. Cl.** ..... 362/507; 362/362; 362/546

Un Damaged Component



Damaged Component





Figure 1

Damaged Component



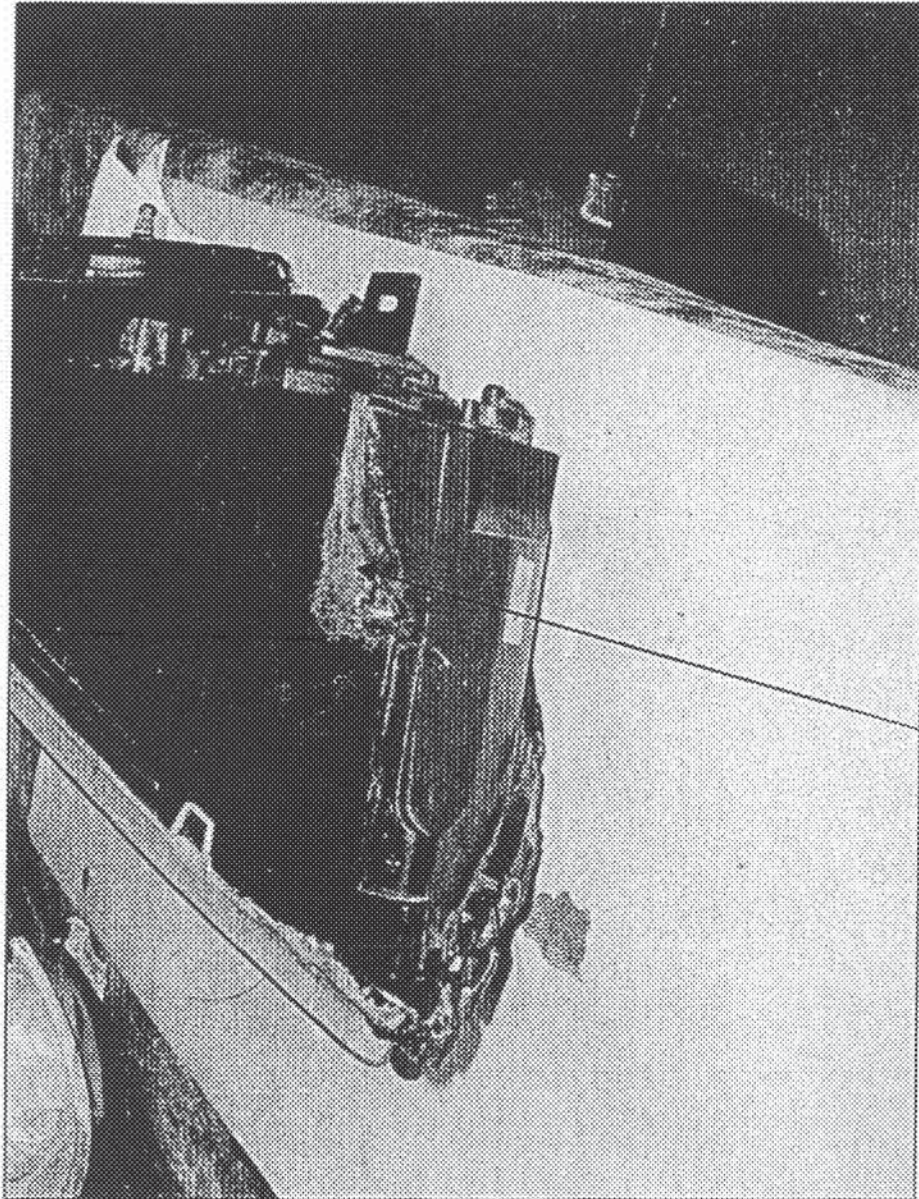


Figure 2

Damaged Component



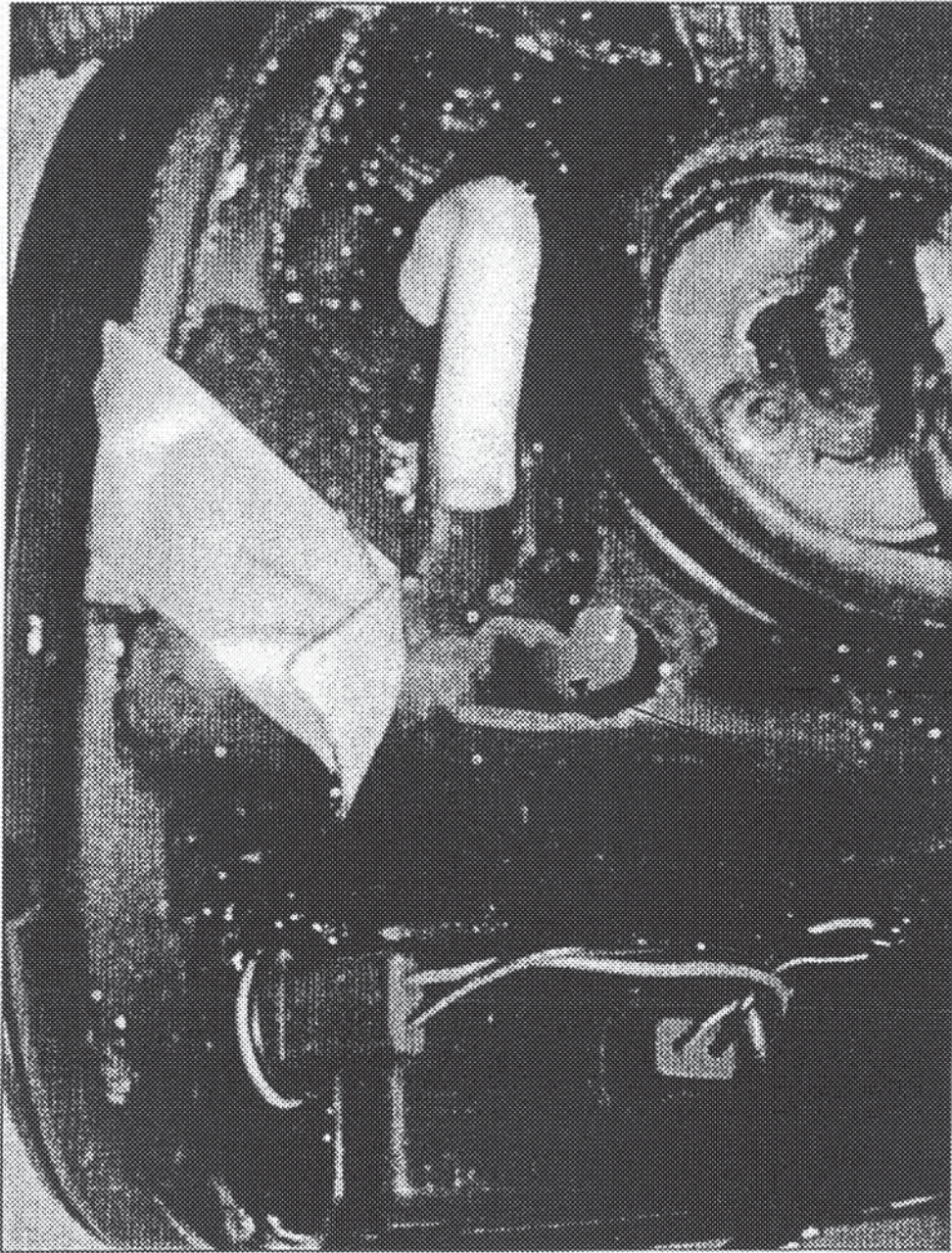
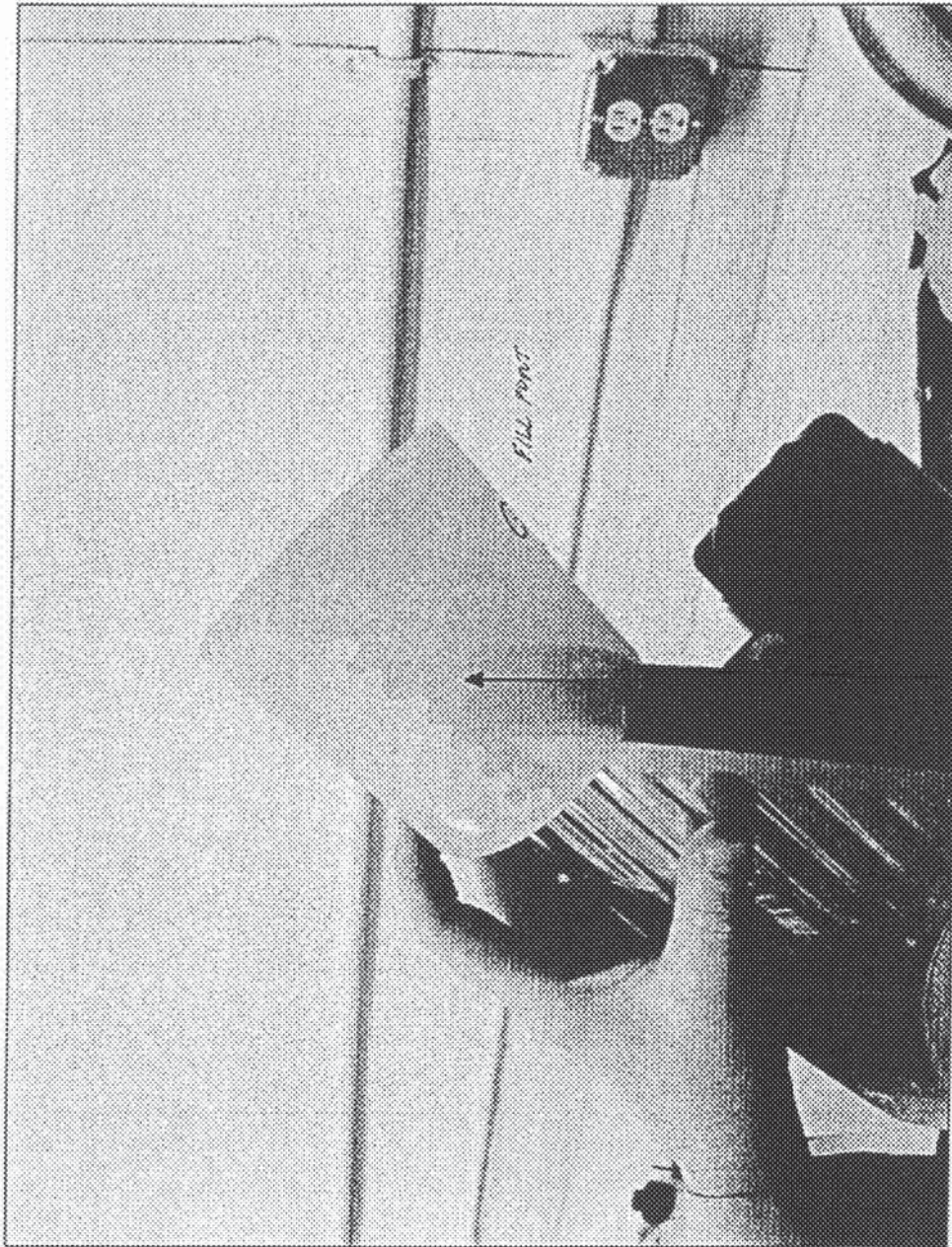


Figure 3

Damaged Component





Two Piece Mold With Fill Port

Figure 4

# Explore Litigation Insights

Docket Alarm provides insights to develop a more informed litigation strategy and the peace of mind of knowing you're on top of things.

## Real-Time Litigation Alerts



Keep your litigation team up-to-date with **real-time alerts** and advanced team management tools built for the enterprise, all while greatly reducing PACER spend.

Our comprehensive service means we can handle Federal, State, and Administrative courts across the country.

## Advanced Docket Research



With over 230 million records, Docket Alarm's cloud-native docket research platform finds what other services can't. Coverage includes Federal, State, plus PTAB, TTAB, ITC and NLRB decisions, all in one place.

Identify arguments that have been successful in the past with full text, pinpoint searching. Link to case law cited within any court document via Fastcase.

## Analytics At Your Fingertips



Learn what happened the last time a particular judge, opposing counsel or company faced cases similar to yours.

Advanced out-of-the-box PTAB and TTAB analytics are always at your fingertips.

## API

Docket Alarm offers a powerful API (application programming interface) to developers that want to integrate case filings into their apps.

## LAW FIRMS

Build custom dashboards for your attorneys and clients with live data direct from the court.

Automate many repetitive legal tasks like conflict checks, document management, and marketing.

## FINANCIAL INSTITUTIONS

Litigation and bankruptcy checks for companies and debtors.

## E-DISCOVERY AND LEGAL VENDORS

Sync your system to PACER to automate legal marketing.