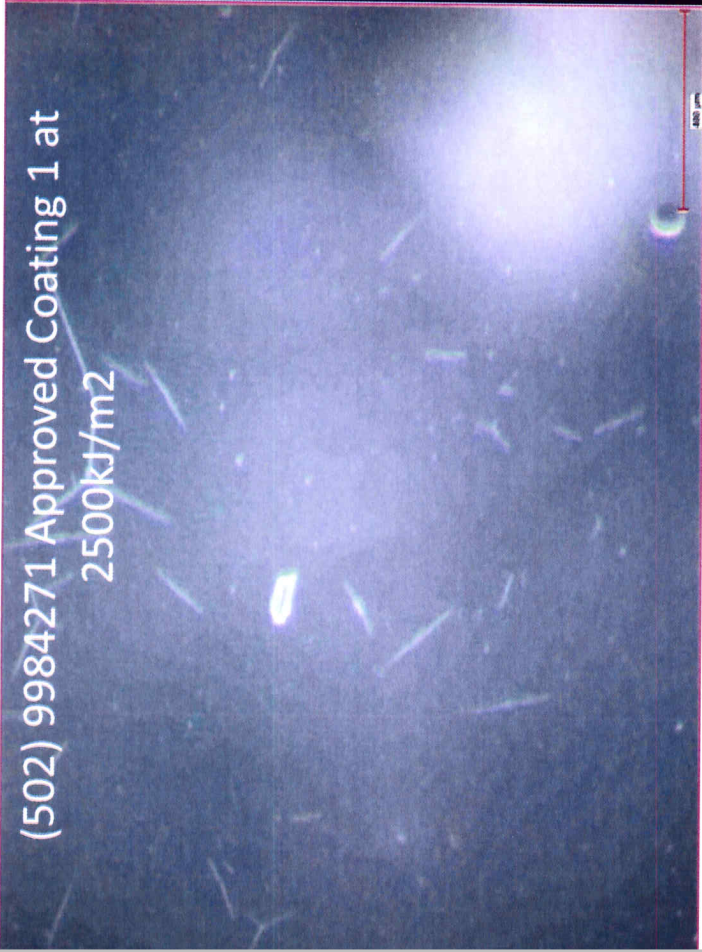


(502) 9984271 Approved Coating 1 at
2500kJ/m²



(402) 9984271 Approved Coating 2 at
2500kJ/m²



(207) Refinished lens exposed to 2500kJ/m²



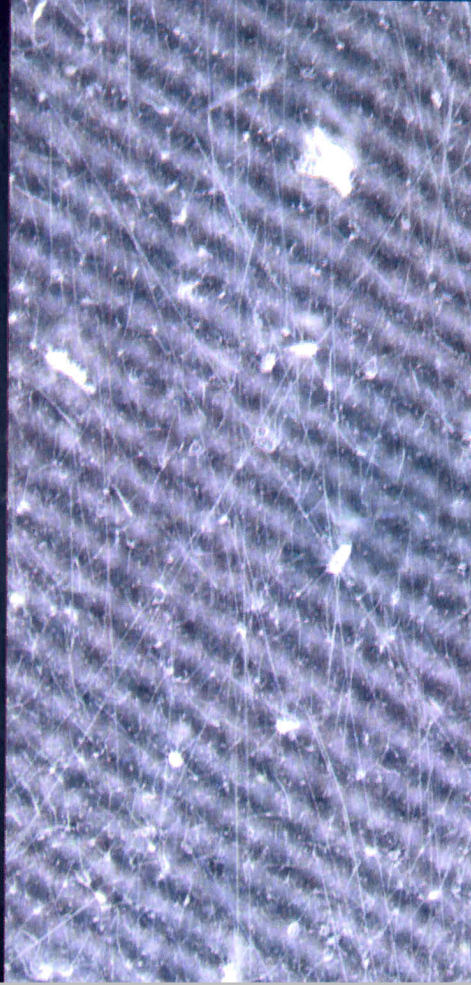
(105) 9984271 Approved Coating 3 at
2500kJ/m²



Refinished samples show similar performance to some current coatings

What a lamp might look like
without being refinished....

(802) Field Samples (similar vintage of
refinished) 1250kJ/m2

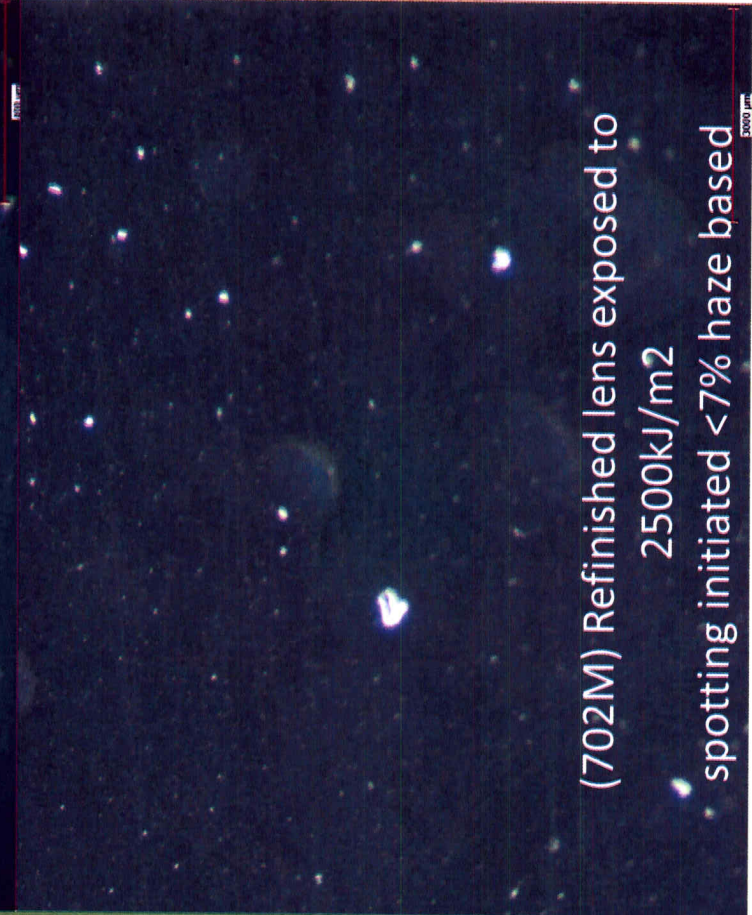


(804) Field Samples (similar vintage of refinished)
2500kJ/m2 >7% haze

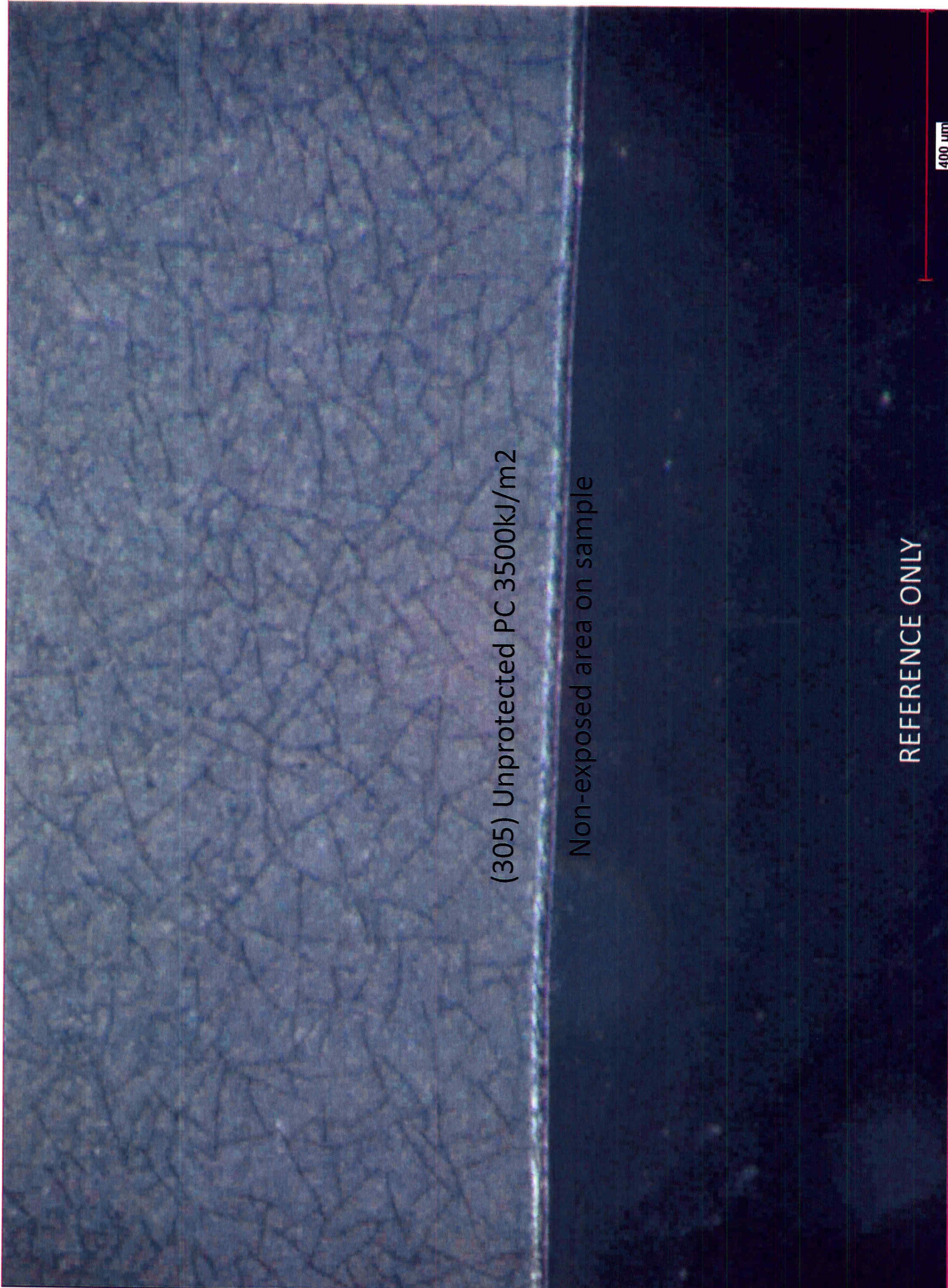


Compared to refinished.....

(803M) Refinished lens exposed to 1250kJ/m2



(702M) Refinished lens exposed to
2500kJ/m2
spotting initiated <7% haze based



(305) Unprotected PC 3500kJ/m2

Non-exposed area on sample

400 μm

REFERENCE ONLY