

1 Thomas Patrick Yohe et al., U.S. Patent No. 5,835,943, "Apparatus and Method
2 Increased Data Access in a Network File Oriented Caching System," issued Nov. 10, 1999

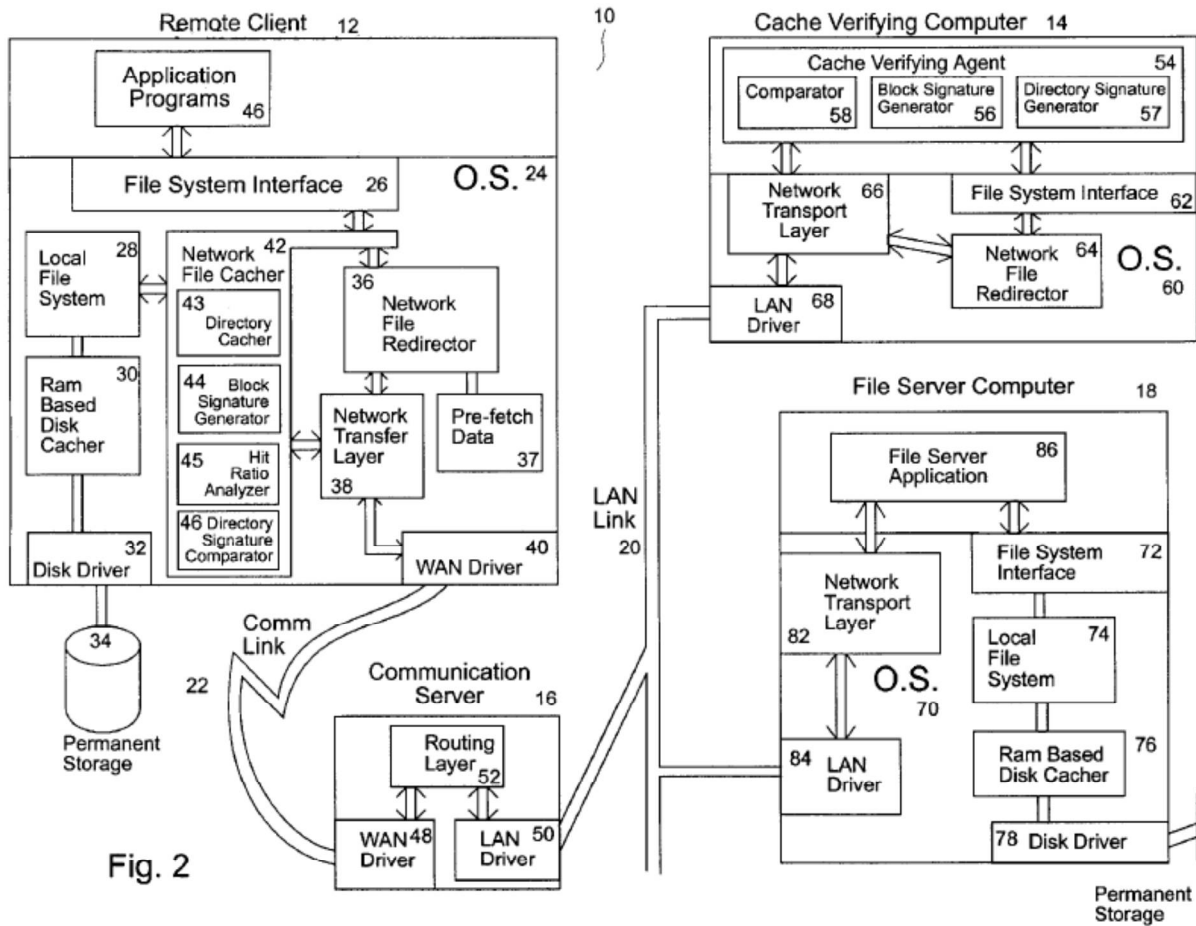


Fig. 2

1
2
3
4
5
6
7
8
9
10
11
12
13
14
15
16
17
18
19

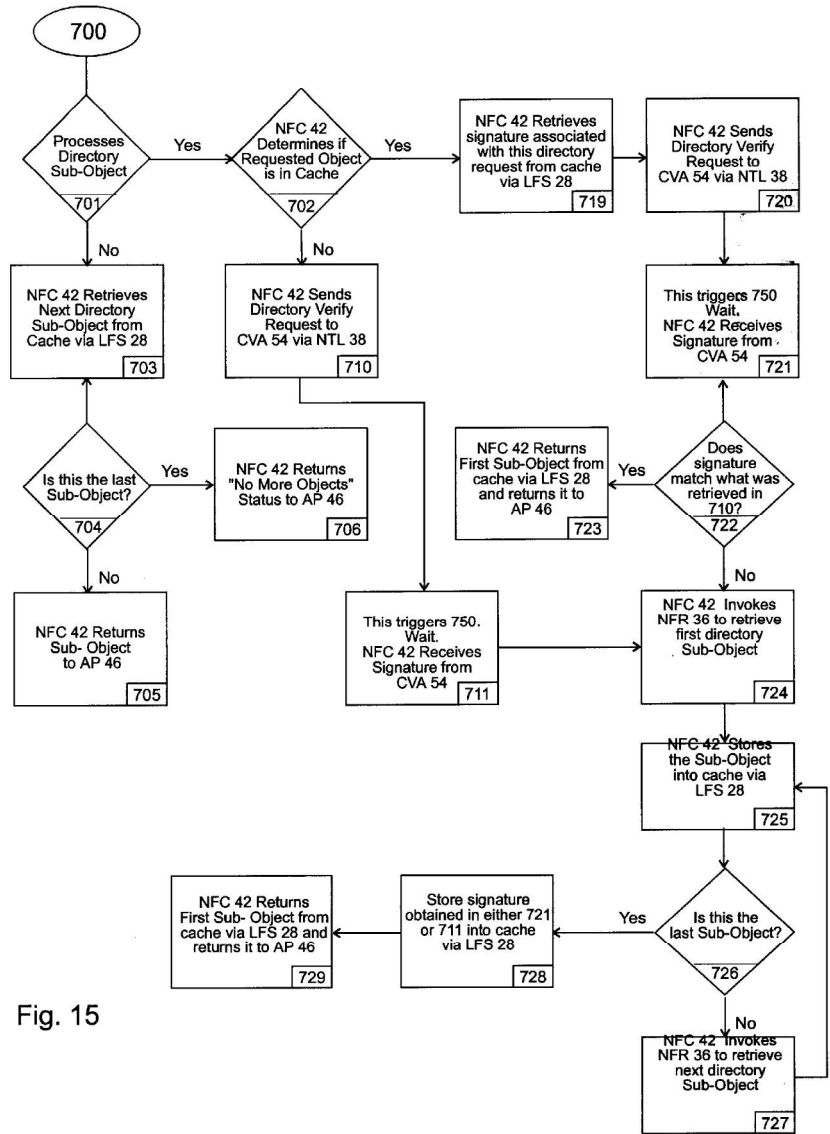


Fig. 15

1
2
3
4
5
6
7
8
9
10
11
12
13
14
15
16
17
18
19

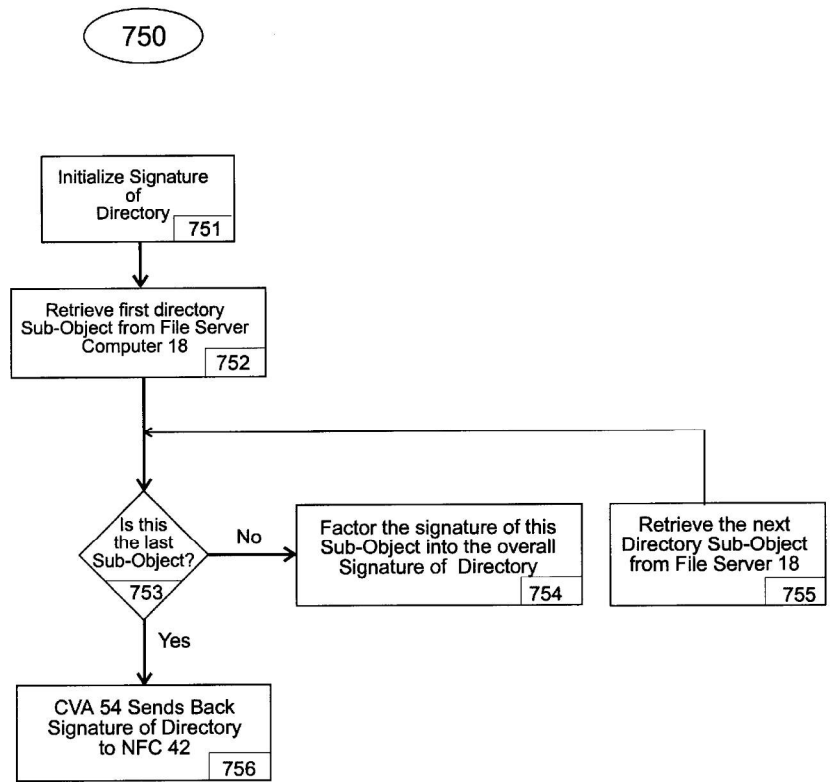


Fig. 16

<u>Claim</u>	<u>Reference</u>
<p>1 2 Claim 1 as a Whole 3 4 5 6 7 8 9 10 11 12 13</p>	<p>Yohe discloses all of the elements and all of the functions of this claim, and how they are arranged in the claim. See below. E.g.: “the present invention is directed to an apparatus for increased data access in a network, which includes a file server computer having a permanent storage memory, a cache verifying computer operably connected to the file server computer in a manner to facilitate the cache rapidly transferring data, the cache verifying computer having a cache memory system, a first memory and a processor with means for performing operations on the data stored in the permanent storage memory of the file server computer to produce a signature of the data characteristic of one of a file and a directory, a remote client computer having an operating system, a first memory, a cache memory and a processor with means for performing an operation on the cache memory to produce a signature of the data, a communication network operably connected to the remote client computer to the cache verifying computer and the file server computer and comparators operably associated with the cache verifying computer and remote client computer for comparing the signatures of the data with one another to determine whether the signature of data from the remote client is valid.” (’943, 2:41-61).</p>
<p>14 1. A system for data access in 15 a packet-switched network, 16 comprising: 17 18 19</p>	<p>Yohe discloses “an apparatus for increased data access in a network (’943, 4:23-27), such as the World Wide Web (’943, 4:23-27). Yohe discloses an “oriented caching system” (’943, title) which “increases the speed at which the form of files and directories are accessed.” (’943, 1:12-15; see also 2:21, 4:22-24, 5:45-50, 5:59-60, 6:22-23).</p> <p>On the client side of the network, Yohe discloses “a remote client computer” (’943, 2:51). On the server side of the network, Yohe discloses</p>

<u>Claim</u>	<u>Reference</u>
	computer having a permanent storage memory, a cache verifying operably connected to the file server computer in a manner to fo rapidly transferring data.” (’943, 2:43-46). Also, “a communic operably connected to the remote client computer to the cache v and the file server computer.” (’943, 2:54-57, Fig. 2). (See also
(a) a sender/computer including	See above. Yohe discloses “a network computer system 10 havi remote client computer 12, cache verifying computer 14, commu and file server computer 18.” (’943, 4:42-44). The sender comp comprise a Cache Verifying Computer, a File Server Computer, Communication Server. (’943, Fig. 2). “The cache verifying computer 14 includes a cache verifying ag having a BSG [(block signature generator)] 56 (of the type descr directory signature generator (DSG) 57 and a comparator 58.” (Yohe discloses alternative embodiments wherein “the cache ver could reside as part of the communication server 16 or as a stand with its own memory and operating system.” (’943 patent, 5:33 ‘943, claim 1).
(i) an operating unit,	See above. While the ’717 patent does not define the meaning o the ’717 does not describe anything reasonably called an “operat not also disclosed in this reference. Yohe discloses that the cache verifying computer includes “an o (’943, 2:46-47). The cache verifying computer includes “an OS system)] 60 having an FSI [(file system interface)] 62 operativel

Explore Litigation Insights

Docket Alarm provides insights to develop a more informed litigation strategy and the peace of mind of knowing you're on top of things.

Real-Time Litigation Alerts



Keep your litigation team up-to-date with **real-time alerts** and advanced team management tools built for the enterprise, all while greatly reducing PACER spend.

Our comprehensive service means we can handle Federal, State, and Administrative courts across the country.

Advanced Docket Research



With over 230 million records, Docket Alarm's cloud-native docket research platform finds what other services can't. Coverage includes Federal, State, plus PTAB, TTAB, ITC and NLRB decisions, all in one place.

Identify arguments that have been successful in the past with full text, pinpoint searching. Link to case law cited within any court document via Fastcase.

Analytics At Your Fingertips



Learn what happened the last time a particular judge, opposing counsel or company faced cases similar to yours.

Advanced out-of-the-box PTAB and TTAB analytics are always at your fingertips.

API

Docket Alarm offers a powerful API (application programming interface) to developers that want to integrate case filings into their apps.

LAW FIRMS

Build custom dashboards for your attorneys and clients with live data direct from the court.

Automate many repetitive legal tasks like conflict checks, document management, and marketing.

FINANCIAL INSTITUTIONS

Litigation and bankruptcy checks for companies and debtors.

E-DISCOVERY AND LEGAL VENDORS

Sync your system to PACER to automate legal marketing.