



US008805825B1

(12) **United States Patent**
Showers et al.

(10) **Patent No.:** **US 8,805,825 B1**
(45) **Date of Patent:** **Aug. 12, 2014**

(54) **ATTRIBUTE PRIORITIZED CONFIGURATION USING A COMBINED CONFIGURATION-ATTRIBUTE DATA MODEL**

(75) Inventors: **Brian K. Showers**, Cedar Park, TX (US); **Brandon M. Beck**, Austin, TX (US); **Nathan E. Little**, Austin, TX (US)

(73) Assignee: **Versata Development Group, Inc.**, Austin, TX (US)

(*) Notice: Subject to any disclaimer, the term of this patent is extended or adjusted under 35 U.S.C. 154(b) by 80 days.

(21) Appl. No.: **11/034,141**

(22) Filed: **Jan. 12, 2005**

(51) **Int. Cl.**
G06F 7/00 (2006.01)

(52) **U.S. Cl.**
USPC **707/723; 705/26.5**

(58) **Field of Classification Search**
USPC **707/723; 705/26.5**
See application file for complete search history.

(56) **References Cited**

U.S. PATENT DOCUMENTS

5,515,524	A	5/1996	Lynch et al.	
5,708,798	A	1/1998	Lynch et al.	
5,825,651	A	10/1998	Gupta et al.	
6,002,854	A	12/1999	Lynch et al.	
6,405,308	B1	6/2002	Gupta et al.	
6,549,908	B1 *	4/2003	Loomans	707/101
6,675,294	B1	1/2004	Gupta et al.	
6,725,257	B1 *	4/2004	Cansler et al.	709/219

6,810,406	B2 *	10/2004	Schlabach et al.	707/201
6,871,198	B2 *	3/2005	Neal et al.	1/1
7,043,407	B2	5/2006	Lynch et al.	
7,043,464	B2 *	5/2006	Abrahams	706/14
7,127,313	B2 *	10/2006	Neri	700/103
7,140,013	B2 *	11/2006	Te'eni et al.	717/173
7,200,582	B1	4/2007	Smith	
7,200,583	B1 *	4/2007	Shah et al.	706/47
7,216,092	B1 *	5/2007	Weber et al.	705/26
7,552,102	B2 *	6/2009	Huelsman et al.	706/47
2004/0122807	A1 *	6/2004	Hamilton et al.	707/3
2005/0144090	A1 *	6/2005	Gadamsetty et al.	705/26
2006/0111878	A1 *	5/2006	Pendyala et al.	703/1
2007/0233730	A1 *	10/2007	Johnston	707/104.1

* cited by examiner

Primary Examiner — Sherief Badawi

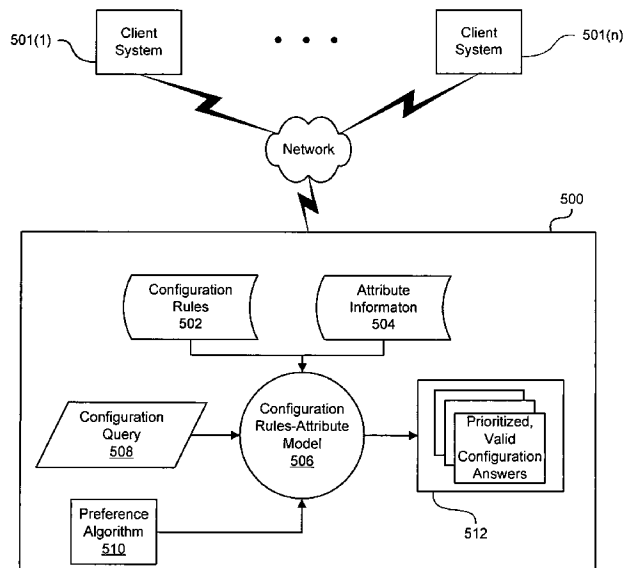
Assistant Examiner — Christopher J Raab

(74) *Attorney, Agent, or Firm* — Terrile, Cannatti, Chambers & Holland, LLP; Kent B. Chambers

(57) **ABSTRACT**

A combined configuration rules-attribute configuration system uses an integrated configuration model to efficiently identify and attribute prioritize valid configuration answers. Submitting an attribute-based configuration query to the combined configuration rules-attribute configuration system allows the query to be answered in a single step. The combined configuration rules and attribute data guide product configuration processing and minimize configuration processing by, for example, calculating only the valid configuration answers that are candidates for the preferred valid answer(s). Thus, the combined configuration rules-attribute configuration system can minimize the number of valid configuration answers to be considered for presentation to a client system or other user of the combined configuration rules-attribute configuration system.

20 Claims, 9 Drawing Sheets



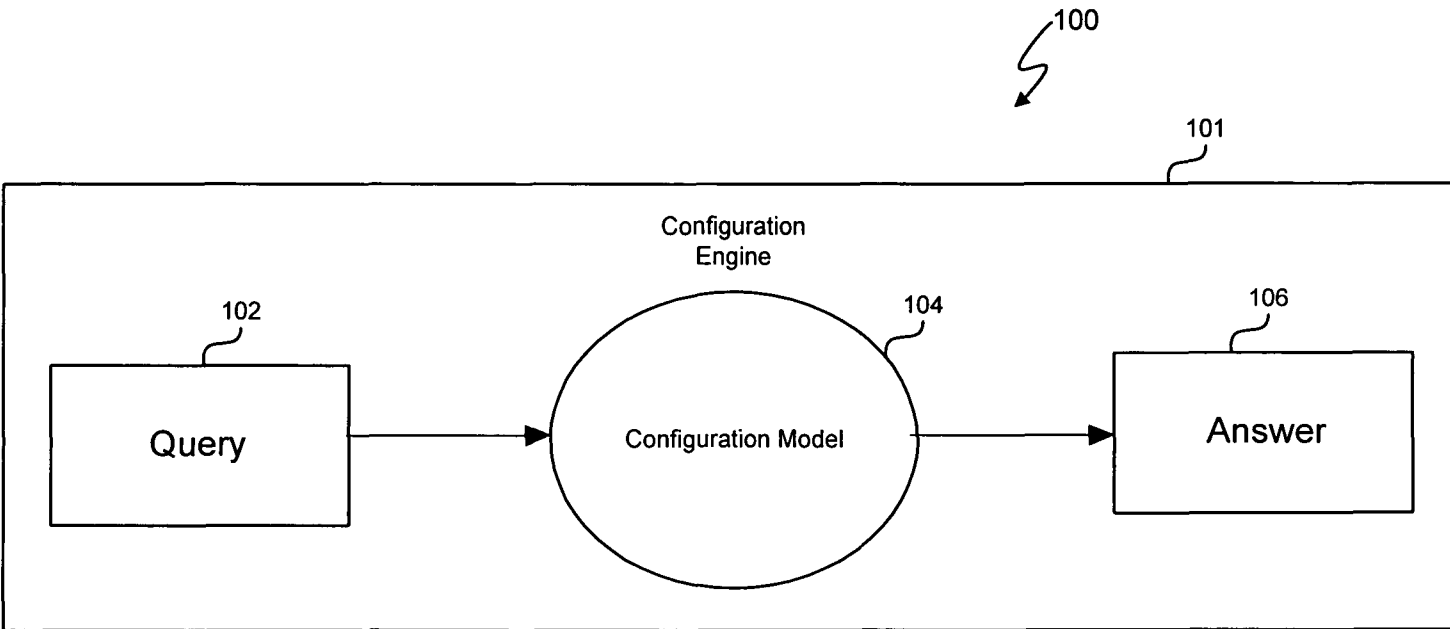


Figure 1 (prior art)

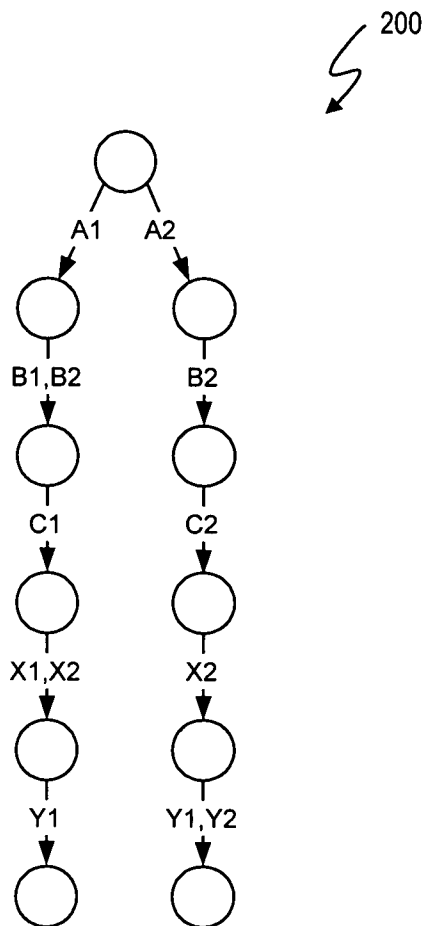


Figure 2 (prior art)

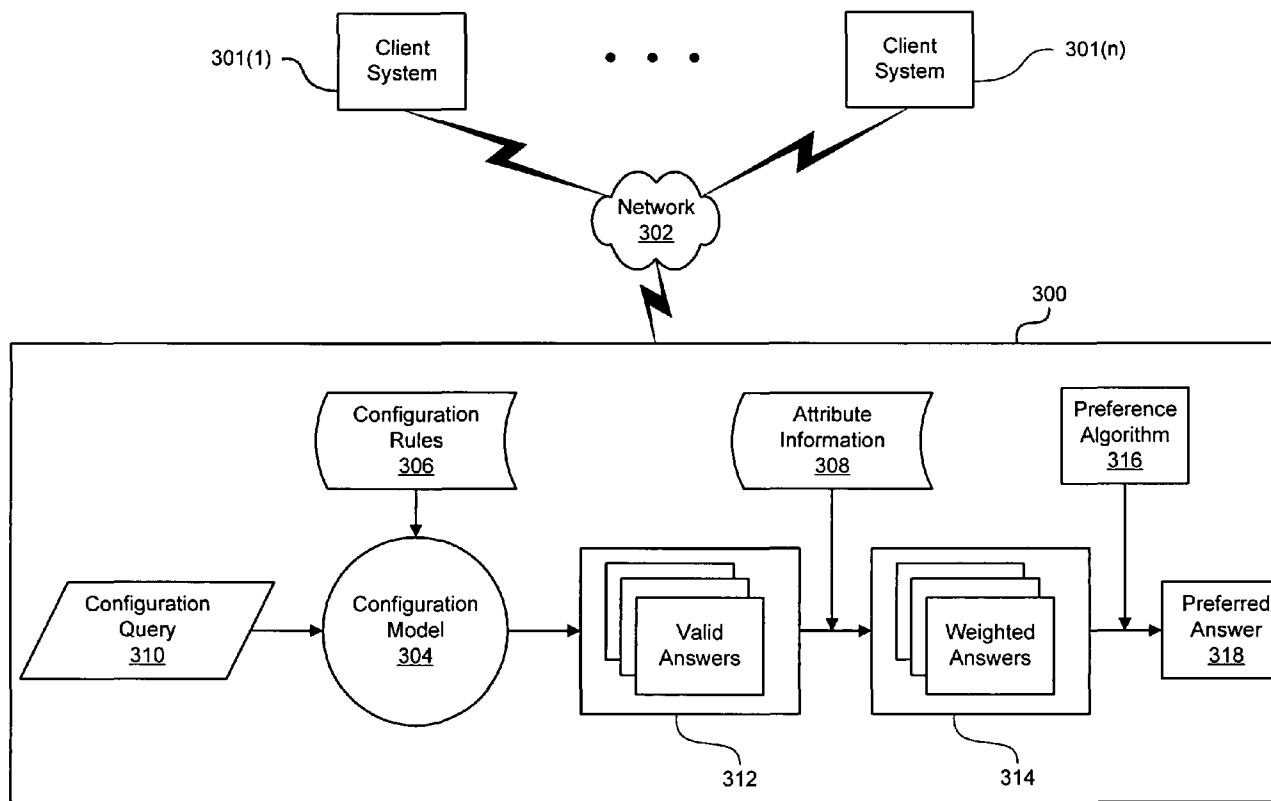


Figure 3 (prior art)

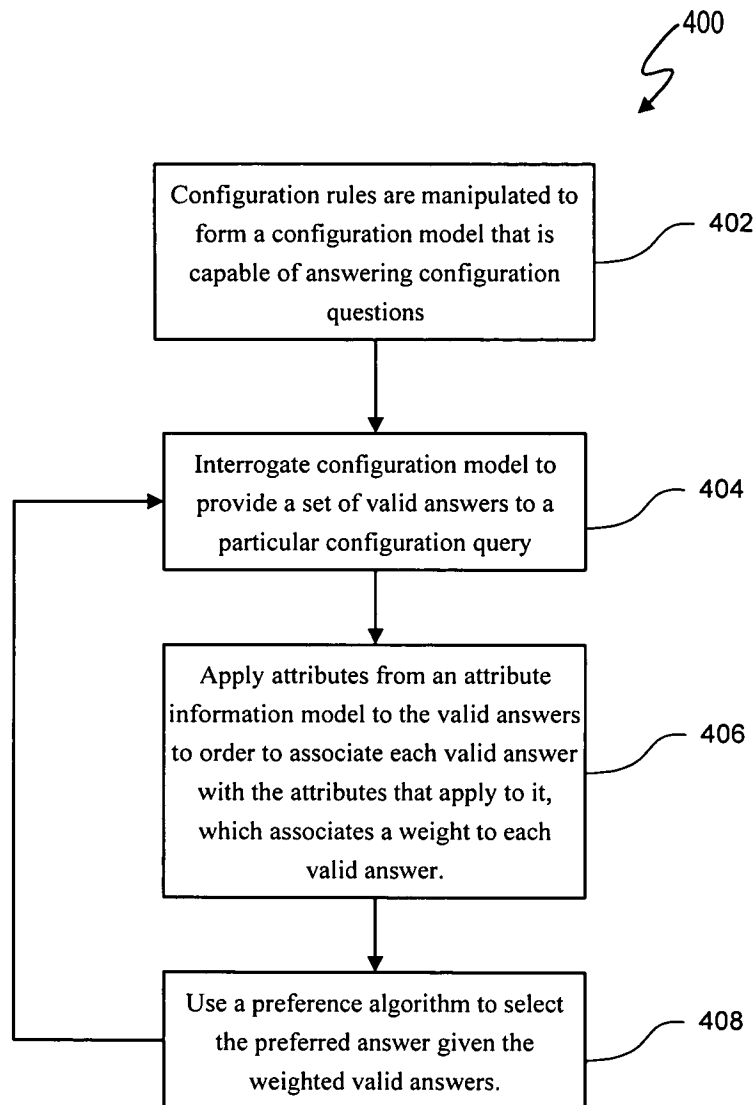


Figure 4 (prior art)

Explore Litigation Insights

Docket Alarm provides insights to develop a more informed litigation strategy and the peace of mind of knowing you're on top of things.

Real-Time Litigation Alerts



Keep your litigation team up-to-date with **real-time alerts** and advanced team management tools built for the enterprise, all while greatly reducing PACER spend.

Our comprehensive service means we can handle Federal, State, and Administrative courts across the country.

Advanced Docket Research



With over 230 million records, Docket Alarm's cloud-native docket research platform finds what other services can't. Coverage includes Federal, State, plus PTAB, TTAB, ITC and NLRB decisions, all in one place.

Identify arguments that have been successful in the past with full text, pinpoint searching. Link to case law cited within any court document via Fastcase.

Analytics At Your Fingertips



Learn what happened the last time a particular judge, opposing counsel or company faced cases similar to yours.

Advanced out-of-the-box PTAB and TTAB analytics are always at your fingertips.

API

Docket Alarm offers a powerful API (application programming interface) to developers that want to integrate case filings into their apps.

LAW FIRMS

Build custom dashboards for your attorneys and clients with live data direct from the court.

Automate many repetitive legal tasks like conflict checks, document management, and marketing.

FINANCIAL INSTITUTIONS

Litigation and bankruptcy checks for companies and debtors.

E-DISCOVERY AND LEGAL VENDORS

Sync your system to PACER to automate legal marketing.