



US008281129B1

(12) **United States Patent**
Asghari-Kamrani et al.

(10) **Patent No.:** **US 8,281,129 B1**
(45) **Date of Patent:** ***Oct. 2, 2012**

(54) **DIRECT AUTHENTICATION SYSTEM AND METHOD VIA TRUSTED AUTHENTICATORS**

(76) Inventors: **Nader Asghari-Kamrani**, Centreville, VA (US); **Kamran Asghari-Kamrani**, Centreville, VA (US)

(*) Notice: Subject to any disclaimer, the term of this patent is extended or adjusted under 35 U.S.C. 154(b) by 548 days.

This patent is subject to a terminal disclaimer.

(21) Appl. No.: **11/333,400**

(22) Filed: **Jan. 18, 2006**

Related U.S. Application Data

(63) Continuation-in-part of application No. 09/940,635, filed on Aug. 29, 2001, now Pat. No. 7,356,837.

(60) Provisional application No. 60/650,137, filed on Feb. 7, 2005.

(51) **Int. Cl.**
H04L 29/06 (2006.01)
G06Q 20/00 (2006.01)

(52) **U.S. Cl.** **713/168; 705/74; 705/78; 713/184**

(58) **Field of Classification Search** **713/155, 713/156, 182-186; 726/4, 5, 2, 8, 18, 27, 726/28; 705/39, 64, 74, 77, 78, 67, 72, 76**
See application file for complete search history.

(56) **References Cited**

U.S. PATENT DOCUMENTS

4,885,778	A *	12/1989	Weiss	713/184
5,535,276	A *	7/1996	Ganesan	713/155
5,732,137	A *	3/1998	Aziz	713/155
5,883,810	A *	3/1999	Franklin et al.	705/39
6,067,621	A *	5/2000	Yu et al.	713/172
6,233,565	B1 *	5/2001	Lewis et al.	705/35
6,236,981	B1 *	5/2001	Hill	705/67

6,338,140	B1 *	1/2002	Owens et al.	713/168
6,529,885	B1 *	3/2003	Johnson	705/64
6,539,092	B1 *	3/2003	Kocher	380/252
6,715,082	B1 *	3/2004	Chang et al.	726/8
6,748,367	B1 *	6/2004	Lee	705/66
6,845,453	B2 *	1/2005	Scheidt et al.	726/5
7,065,786	B2 *	6/2006	Taguchi	726/18
7,096,204	B1 *	8/2006	Chen et al.	705/74

(Continued)

OTHER PUBLICATIONS

Lopucki, "Human Identification Theory and the Identity Theft Problem," Texas Law Review, vol. 80, pp. 89-134 (2001).

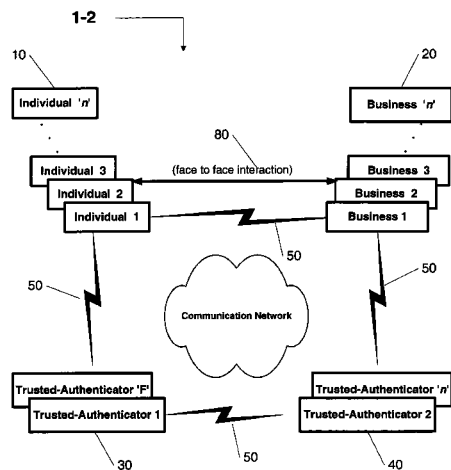
(Continued)

Primary Examiner — Gilberto Barron, Jr.
Assistant Examiner — Abdulhakim Nobahar
(74) *Attorney, Agent, or Firm* — Michael P. Fortkort, Esq.; Michael P Fortkort PC

(57) **ABSTRACT**

Fraud and identity theft are enabled by two faulty assumptions about the way that the identity of a person is verified in our society. The first is that someone who demonstrates knowledge of certain items of personal or financial information about a particular person is presumed to be that person. The second assumption, which gives rise to the first assumption, is that these items of information can be kept confidential. Because fraudsters and identity thieves often seek to use their victim's personal and financial information, this invention proposes a direct authentication system and method that does not depend on these assumptions. The proposed method enables businesses to determine whether the customer is truly the person who he says he is by adopting a new "two-factor" authentication technique and authenticating customer's identity utilizing customer's trusted authenticator. A customer's trusted authenticator can be found within the financial services community; in particular, a bank or other financial institution with whom the customer has a trusted relationship, such as a bank account.

52 Claims, 4 Drawing Sheets



US 8,281,129 B1

Page 2

U.S. PATENT DOCUMENTS

7,111,173	B1 *	9/2006	Scheidt	713/186
7,150,038	B1 *	12/2006	Samar	726/8
7,171,694	B1 *	1/2007	Jespersen et al.	726/27
7,236,956	B1 *	6/2007	Ogg et al.	705/50
7,237,117	B2 *	6/2007	Weiss	713/182
7,324,972	B1 *	1/2008	Oliver et al.	705/40
7,334,735	B1 *	2/2008	Antebi et al.	235/492
2002/0040346	A1 *	4/2002	Kwan	705/51
2002/0046187	A1 *	4/2002	Vargas et al.	705/67
2002/0046189	A1 *	4/2002	Morita et al.	705/67
2002/0069174	A1 *	6/2002	Fox et al.	705/52
2002/0083347	A1 *	6/2002	Taguchi	713/202

2002/0087483	A1 *	7/2002	Harif	705/76
2002/0120587	A1 *	8/2002	D'Agostino	705/78
2002/0133412	A1 *	9/2002	Oliver et al.	705/26
2002/0184143	A1 *	12/2002	Khater	705/39
2004/0030752	A1 *	2/2004	Selgas et al.	709/206
2010/0100724	A1 *	4/2010	Kaliski, Jr.	713/155

OTHER PUBLICATIONS

Solove, "Identity Theft, Privacy, and the Architecture of Vulnerability," *Hastings Law Journal*, vol. 54 No. 4, p. 1251 (2003).

* cited by examiner

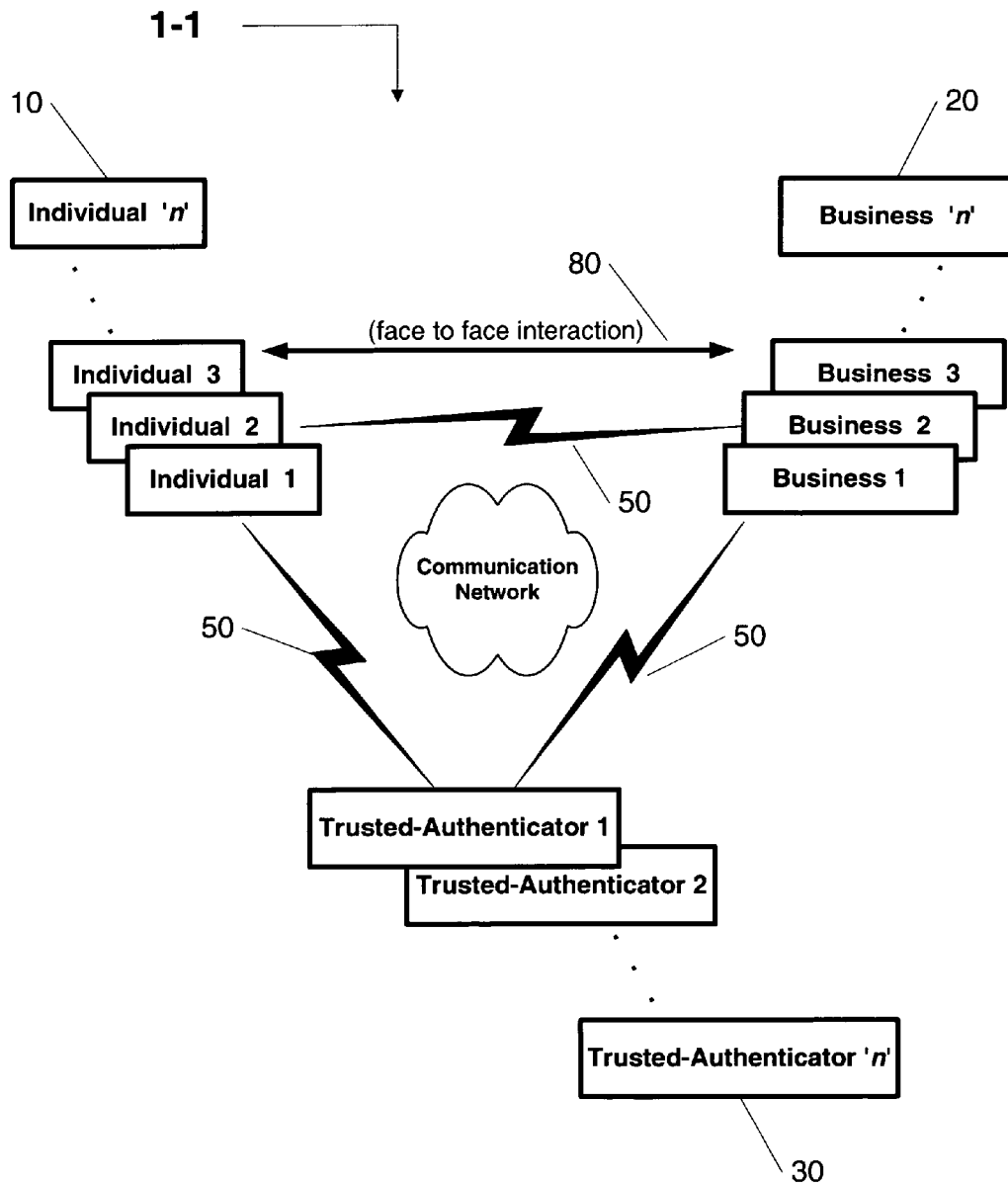


Figure 1a

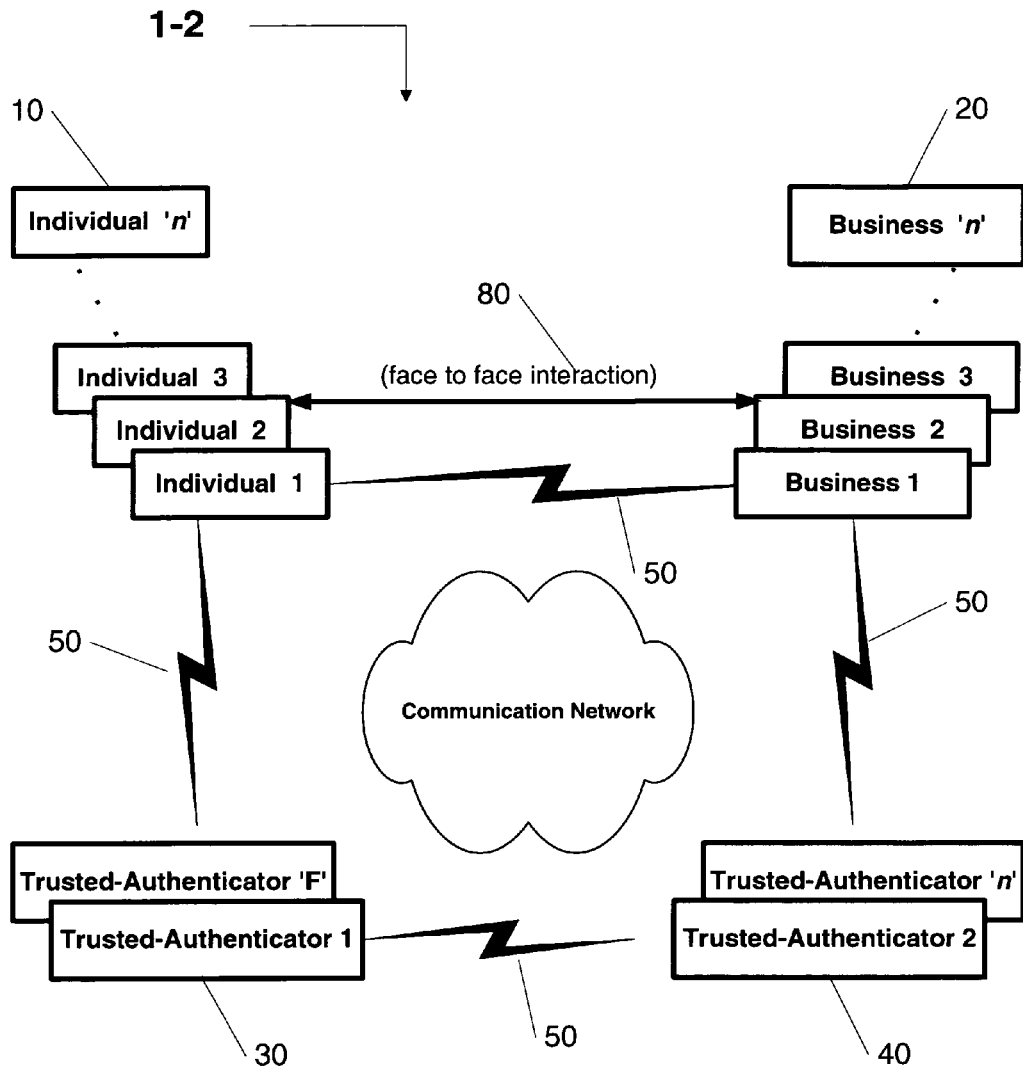


Figure 1b

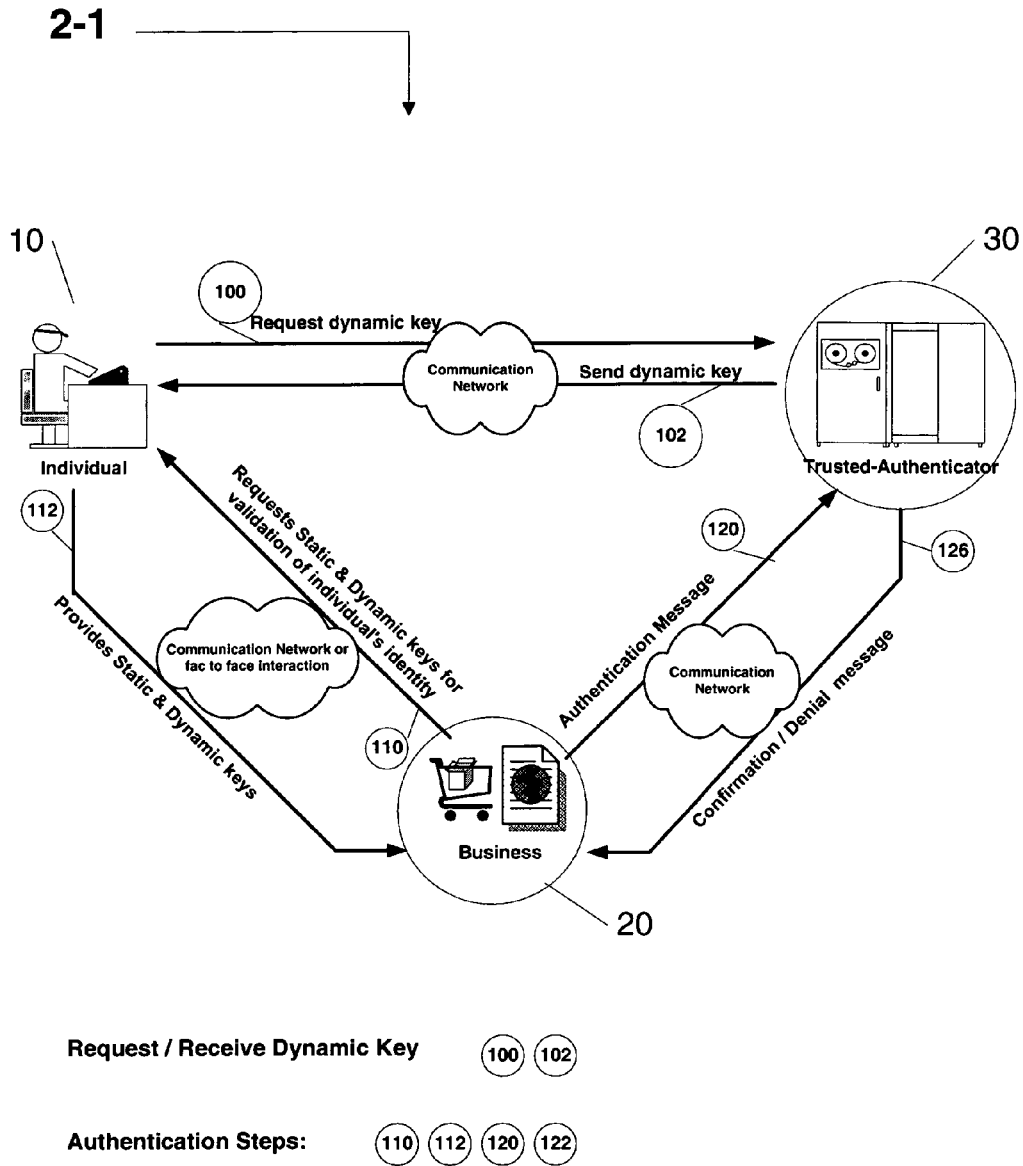


Figure 2a

Explore Litigation Insights

Docket Alarm provides insights to develop a more informed litigation strategy and the peace of mind of knowing you're on top of things.

Real-Time Litigation Alerts



Keep your litigation team up-to-date with **real-time alerts** and advanced team management tools built for the enterprise, all while greatly reducing PACER spend.

Our comprehensive service means we can handle Federal, State, and Administrative courts across the country.

Advanced Docket Research



With over 230 million records, Docket Alarm's cloud-native docket research platform finds what other services can't. Coverage includes Federal, State, plus PTAB, TTAB, ITC and NLRB decisions, all in one place.

Identify arguments that have been successful in the past with full text, pinpoint searching. Link to case law cited within any court document via Fastcase.

Analytics At Your Fingertips



Learn what happened the last time a particular judge, opposing counsel or company faced cases similar to yours.

Advanced out-of-the-box PTAB and TTAB analytics are always at your fingertips.

API

Docket Alarm offers a powerful API (application programming interface) to developers that want to integrate case filings into their apps.

LAW FIRMS

Build custom dashboards for your attorneys and clients with live data direct from the court.

Automate many repetitive legal tasks like conflict checks, document management, and marketing.

FINANCIAL INSTITUTIONS

Litigation and bankruptcy checks for companies and debtors.

E-DISCOVERY AND LEGAL VENDORS

Sync your system to PACER to automate legal marketing.