

 KeyCite Yellow Flag - Negative Treatment

**Distinguished by** Ex Parte St. Jude Medical, Atrial Fibrillation Div. Inc.,  
Bd.Pat.App. & Interf., March 21, 2011

391 F.3d 1195  
United States Court of Appeals,  
Federal Circuit.

In re Daniel S. FULTON and James Huang

No. 04-1267.

|  
DECIDED: Dec. 2, 2004.

### Synopsis

**Background:** Inventors of shoe soles with increased traction appealed from decision of Board of Patent Appeals and Interferences, rejecting patent application on ground of obviousness.

**[Holding:]** The Court of Appeals, Michel, Circuit Judge, held that evidence supported finding that prior art suggested desirability of combination of claimed limitations.

Affirmed.

West Headnotes (8)


#### [1] Patents

 Questions of law or fact

Patent obviousness is question of law based on underlying findings of fact. 35 U.S.C.A. § 103(a).

1 Cases that cite this headnote


#### [2] Patents

 Scope of Review

Factual findings by Board of Patent Appeals and Interferences are upheld on judicial review unless they are unsupported by substantial evidence. 28 U.S.C.A. § 1295(a)(4)(A).

Cases that cite this headnote


#### [3] Patents

 Combination of prior art references; “teaching, suggestion, or motivation” test

When patent's alleged obviousness depends on combination of prior art references, there must be some teaching, suggestion, or motivation to combine references, i.e., prior art as a whole must suggest desirability of combination. 35 U.S.C.A. § 103(a).

23 Cases that cite this headnote

#### [4] Patents

 Combination of prior art references; “teaching, suggestion, or motivation” test

Source of teaching, suggestion, or motivation to combine prior art references, for purpose of patent obviousness inquiry, may be nature of problem, teachings of pertinent references, or ordinary knowledge of those skilled in art. 35 U.S.C.A. § 103(a).

19 Cases that cite this headnote


#### [5] Patents

 Particular products or processes

Evidence supported finding that prior art shoe sole patterns suggested desirability of combining layout and hexagonal stud limitations claimed in patent application, and thus that such combination was unpatentable as obvious; prior patent, which described same stud pattern as application but used differently shaped studs, also suggested possibility of using other shapes, and persons of skill in the art would have recognized that hexagonal studs known from other prior art were particularly well suited to prior patent's purposes. 35 U.S.C.A. § 103(a).

5 Cases that cite this headnote

#### [6] Patents

 Combination of prior art references; “teaching, suggestion, or motivation” test

Particular combination of prior art limitations need not be the preferred, or most desirable, combination described in prior art in order for

such art to provide motivation for combination, for purpose of determining whether combination is unpatentable as obvious. 35 U.S.C.A. § 103(a).

6 Cases that cite this headnote

## [7] Patents

🔑 Teaching away from prior art reference

Prior art's mere disclosure of more than one alternative does not constitute "teaching away" from any of those alternatives, for purpose of determining whether subsequent invention making use of yet another alternative is patentably nonobvious; rather, such teaching away will only be found where prior art affirmatively states that subsequently used alternative is undesirable. 35 U.S.C.A. § 103(a).

19 Cases that cite this headnote

## [8] Patents

🔑 Design

### Patents

🔑 In general; utility

US Patent D263,645, US Patent D281,462. Cited as Prior Art.

US Patent 3,793,750. Cited as Prior Art.

8 Cases that cite this headnote

## Attorneys and Law Firms

**\*1196** Garth E. Janke, Birdwell & Janke, of Portland, Oregon, for appellants.

John M. Whealan, Solicitor, United States Patent and Trademark Office, of Arlington, Virginia, for the Director of the United States Patent and Trademark Office. With him on the brief were W. Asa Hutchinson III, Attorney-Advisor, and William LaMarca, Associate Solicitor.

Before MICHEL, RADER, and GAJARSA, Circuit Judges.

## Opinion

MICHEL, Circuit Judge.

Appellants Daniel Fulton and James Huang appeal from the decision of the U.S. Patent and Trademark Office, Board of Patent Appeals and Interferences ("Board"), affirming the examiner's rejection of appellants' application for a utility patent on grounds that the invention claimed would have been obvious under 35 U.S.C. § 103(a). The appeal was submitted for decision without oral argument on November 5, 2004. Because the Board's finding that the prior art suggested the desirability of the combination of shoe sole limitations claimed in appellants' patent application was supported by substantial evidence, we affirm.

## Background

On July 24, 1997, appellants filed application number 09/122,198 (the "'198 application") for a utility patent directed to a shoe sole with increased traction. Claim 1, the only independent claim at issue, reads:

An improved shoe sole for increasing the resistance to slip on a contact surface, the sole comprising a bottom surface and defining a perimeter bounding a forefoot portion corresponding to the forefoot of the shoe and a heel portion corresponding to the heel of the shoe, **\*1197** wherein the sole extends generally along a fore-aft axis running from said heel portion to said forefoot portion, the sole further comprising a substantially regular tiling array of projections projecting from said bottom surface, *said projections terminating in hexagonal shaped projected surfaces spaced from said bottom surface in a direction for making contact with the contact surface, said projections being oriented so that opposite edges of said projected surfaces face generally in the directions of said fore-aft axis, said projected surfaces being substantially flat and parallel to the bottom surface to maximize the area of contact with the contact surface, said projections being spaced from one another to define substantially continuous channels therebetween for*

conducting liquid, *said channels being open over at least most of said perimeter, said forefoot portion and said heel portion of the sole.*

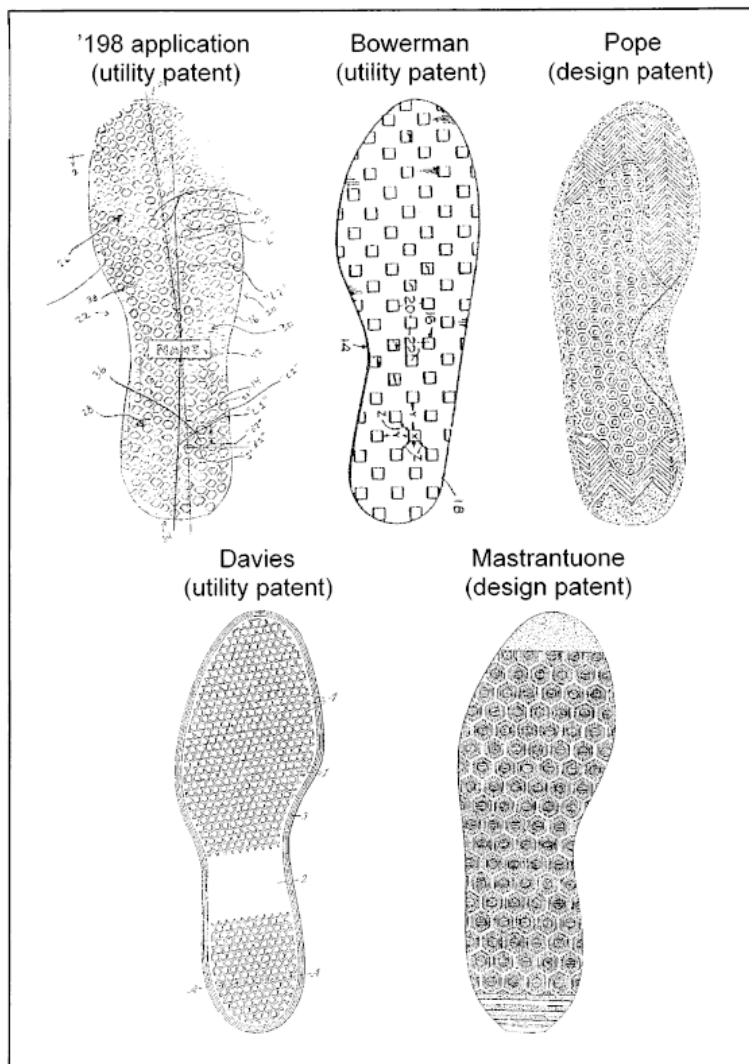
'198 application, at 7 (emphases added).

Three limitations of this claim are at issue, namely the limitations that: (A) the perimeter of the shoe is mostly open, (B) the projected surfaces, also called studs, are hexagonal in shape, and (C) the hexagonal shapes be oriented so that opposite edges of the hexagon “face generally in the directions of said fore-aft axis.” *Id.* A figure from the '198 application is reproduced below, with non-substantive modifications for simplicity of presentation.

Prior art related to the '198 application includes U.S. Patent No. 3,793,750 (“Bowerman”), U.S. Design Patent No. 281,462 (“Pope”), U.S. Design Patent No. 263,645 (“Mastrantuone”), and United Kingdom Patent No. 513,375 (“Davies”). Figures from these patents are reproduced below.

As can be seen in the figures, the orientation of the projected surfaces in these figures is different. In this opinion, we will refer to the orientation in the '198 application, Bowerman, and Pope as a “facing” orientation because the front edge of each hexagonal projected surface faces forward and the orientation in Mastrantuone and Davies as a “pointing” orientation.

**\*1198**



The examiner rejected the '198 application, *inter alia*, on obviousness grounds by considering Pope in light of Bowerman and Davies, and appellants appealed this rejection

to the Board. In its decision, the Board reversed the examiner's ground for rejection, supplied an alternative ground for rejection, and remanded. After **\*1199** the Board entered its decision, appellants filed a request for rehearing. The panel

held this motion for rehearing in abeyance while the examiner considered the application on remand. After reopening prosecution, the examiner rejected the '198 application for reasons identical to those offered by the Board in its first decision.

Appellants again appealed the examiner's rejection. In its decision, the Board “vacat[ed] the rejection of claim 1 set forth in the earlier decision in favor of the identical rejection later entered by the examiner.” *Ex parte Fulton*, No.2003–0536, slip op. at 4 (Bd. Pat.App. & Int. Sept. 11, 2003). The Board vacated the rejection in order to alleviate the confusion caused by the appellant in concurrently pursuing a request for a rehearing of the Board's first decision and a new appeal from the final rejection of the '198 application after remand. The Board credited the arguments in both actions. The Board then proceeded to affirm the rejection but under a different line of reasoning. The Board stated:

In the present case, the combined teachings of Bowerman and Pope would have suggested the shoe sole recited in claim 1 to a person having ordinary skill in the art. As indicated above, Bowerman's shoe sole responds to all of the limitations in the claim except for those relating to the hexagonal shaped projected surfaces. While not specifically mentioning hexagonal shaped projected surfaces, Bowerman clearly suggests that cylindrical polygon shaped studs or projections other than those expressly described (square, rectangular or triangular) may be employed to provide sharp edges which bite into artificial turf for good traction. Pope establishes that shoe soles having studs embodying projected surfaces hexagonally shaped and oriented as recited in claim 1 are conventional. Given these disclosures, a person having ordinary skill in the art would have readily appreciated Pope's known hexagonal shaped projecting surfaces as being particularly well suited for implementing Bowerman's desire for projections having a plurality of sharp edges adapted to bite into artificial turf to obtain good traction. This

appreciation would have furnished the artisan with ample suggestion or motivation to combine Bowerman and Pope in the manner proposed so as to arrive at the subject matter recited in claim 1.

*Id.* at 6–7. After appellants' request for a rehearing was denied, they appealed to this court, which has jurisdiction under 28 U.S.C. § 1295(a)(4)(A).

## Discussion

### I.

“A patent may not be obtained ... if the differences between the subject matter sought to be patented and the prior art are such that the subject matter as a whole would have been obvious at the time the invention was made to a person having ordinary skill in the art to which said subject matter pertains.” 35 U.S.C. § 103(a).

[1] [2] Obviousness is a “question of law based on underlying findings of fact.” *In re Gartside*, 203 F.3d 1305, 1316 (Fed.Cir.2000). The Board's factual findings are upheld unless they are unsupported by substantial evidence. *Id.* Substantial evidence is “such relevant evidence as a reasonable mind might accept as adequate to support a conclusion.” *Consol. Edison Co. v. NLRB*, 305 U.S. 197, 229–30, 59 S.Ct. 206, 83 L.Ed. 126 (1938). What the prior art teaches, whether it teaches away from the claimed invention, and whether it motivates a combination of teachings from different references are questions of \*1200 fact. *Id.*; *In re Berg*, 320 F.3d 1310, 1312 (Fed.Cir.2003). Other factual findings related to obviousness may include “(1) the scope and content of the prior art; (2) the level of ordinary skill in the prior art; (3) the differences between the claimed invention and the prior art; and (4) objective evidence of nonobviousness.” *In re Dembiczak*, 175 F.3d 994, 998 (Fed.Cir.1999), *abrogated on other grounds in In re Gartside*, 203 F.3d 1305 (Fed.Cir.2000) (abrogating the holding in *In re Dembiczak* that the Board's findings of fact are reviewed for clear error); *see also Graham v. John Deere Co.*, 383 U.S. 1, 17–18, 86 S.Ct. 684, 15 L.Ed.2d 545 (1966).

[3] [4] “When a rejection depends on a combination of prior art references, there must be some teaching, suggestion, or motivation to combine the references.” *In re Rouffet*,

149 F.3d 1350, 1355 (Fed.Cir.1998). Stated another way, the prior art as a whole must “suggest the desirability” of the combination. *In re Beattie*, 974 F.2d 1309, 1311 (Fed.Cir.1992) (internal quotation omitted); *Winner Int'l Royalty Corp. v. Wang*, 202 F.3d 1340 (Fed.Cir.2000) (“Trade-offs often concern what is *feasible*, not what is, on balance, *desirable*. Motivation to combine requires the latter.” (emphasis added)). The source of the teaching, suggestion, or motivation may be “the nature of the problem,” “the teachings of the pertinent references,” or “the ordinary knowledge of those skilled in the art.” *In re Rouffet*, 149 F.3d at 1355.

## II.

[5] As quoted above, the Board found that the prior art as a whole suggested or motivated a combination of the open perimeter and orientation of Bowerman with the hexagonal surface and orientation of Pope. Appellants raise a number of arguments as to why this finding is not supported by substantial evidence.

[6] Appellants first argue that the Board's finding of a motivation to combine lacks substantial evidence because the Board failed to demonstrate that the characteristics disclosed in Pope, hexagonal surfaces in a facing orientation, are preferred over other alternatives disclosed in the prior art. This argument fails because our case law does not require that a particular combination must be the preferred, or the most desirable, combination described in the prior art in order to provide motivation for the current invention. “[T]he question is whether there is something in the prior art as a whole to suggest the *desirability*, and thus the obviousness, of making the combination,” not whether there is something in the prior art as a whole to suggest that the combination is the *most desirable* combination available. See *In re Beattie*, 974 F.2d at 1311 (internal quotation omitted; emphasis added). A case on point is *In re Gurley*, 27 F.3d 551, 552–53 (Fed.Cir.1994), in which we upheld the Board's decision to reject, on obviousness grounds, the claims of a patent application directed to one of two alternative resins disclosed in a prior art reference, even though the reference described the resin claimed by Gurley as “inferior.” Far from requiring that a disclosed combination be preferred in the prior art in order to be motivating, this court has held that “[a] known or obvious composition does not become patentable simply because it has been described as somewhat inferior to some other product for the same use” and the reference “teaches

that epoxy is usable and has been used for Gurley's purpose.” *Id.* Thus, a finding that the prior art as a whole suggests the desirability of a particular combination need not be supported by a finding that the prior art suggests that the combination claimed by the patent applicant is the preferred, or most desirable, combination.

\*1201 In this case, the Board found that “Bowerman clearly suggests that cylindrical polygon shaped studs or projections other than those expressly described (square, rectangular, or triangular) may be employed to provide sharp edges which bite into artificial turf for good traction.” *Ex parte Fulton*, slip op. at 6–7. Bowerman thus provides a motivation to combine its teachings with other prior art references that disclose cylindrical polygon shapes other than squares, triangles, and rectangles. The Board also found that Pope discloses a shoe sole with hexagonal surfaces, which is a cylindrical polygon-shaped surface, and a facing orientation. Finally, the Board found that no other prior art references taught away from the combination of Bowerman and Pope that it adopted. These secondary findings are sufficient to support a primary finding that the prior art as a whole suggests the desirability of the combination of Bowerman and Pope described by the Board.

[7] Appellants disagree with the Board's finding that no prior art references taught away from the combination of Bowerman and Pope adopted by the Board. Appellants quote language from *In re Gurley* that “[a] reference may be said to teach away when a person of ordinary skill, upon reading the reference, would be discouraged from following the path set out in the reference, or would be led in a direction divergent from the path that was taken by the applicant.” 27 F.3d at 553. Appellants argue that “the prior art disclosed alternatives to each of the claimed elements A [the perimeter], B [the shape of the surface], and C [the orientation of the surface]. Choosing one alternative necessarily means rejecting the other, i.e., following a path that is ‘in a divergent direction from the path taken by the applicant.’ ” This interpretation of our case law fails. The prior art's mere disclosure of more than one alternative does not constitute a teaching away from any of these alternatives because such disclosure does not criticize, discredit, or otherwise discourage the solution claimed in the '198 application. Indeed, in the case cited by appellants, *In re Gurley*, we held that the invention claimed in the patent application was unpatentable based primarily on a prior art reference that disclosed two alternatives, one of which was the claimed alternative. Accordingly, mere disclosure of alternative designs does not teach away.

# Explore Litigation Insights

Docket Alarm provides insights to develop a more informed litigation strategy and the peace of mind of knowing you're on top of things.

## Real-Time Litigation Alerts



Keep your litigation team up-to-date with **real-time alerts** and advanced team management tools built for the enterprise, all while greatly reducing PACER spend.

Our comprehensive service means we can handle Federal, State, and Administrative courts across the country.

## Advanced Docket Research



With over 230 million records, Docket Alarm's cloud-native docket research platform finds what other services can't. Coverage includes Federal, State, plus PTAB, TTAB, ITC and NLRB decisions, all in one place.

Identify arguments that have been successful in the past with full text, pinpoint searching. Link to case law cited within any court document via Fastcase.

## Analytics At Your Fingertips



Learn what happened the last time a particular judge, opposing counsel or company faced cases similar to yours.

Advanced out-of-the-box PTAB and TTAB analytics are always at your fingertips.

## API

Docket Alarm offers a powerful API (application programming interface) to developers that want to integrate case filings into their apps.

## LAW FIRMS

Build custom dashboards for your attorneys and clients with live data direct from the court.

Automate many repetitive legal tasks like conflict checks, document management, and marketing.

## FINANCIAL INSTITUTIONS

Litigation and bankruptcy checks for companies and debtors.

## E-DISCOVERY AND LEGAL VENDORS

Sync your system to PACER to automate legal marketing.