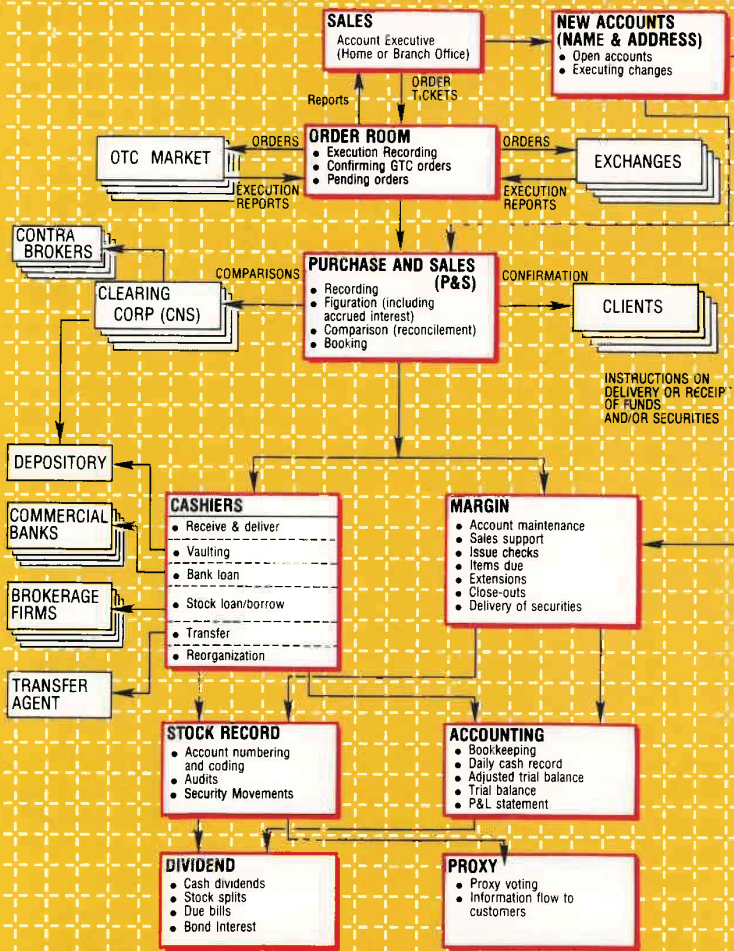


Second Edition

# AFTER THE TRADE IS MADE

## Processing Securities Transactions



# DAVID M. WEISS

**Library of Congress Cataloging-in-Publication Data**

Weiss, David M.

After the trade is made : processing securities transactions /  
David M. Weiss.—2nd ed.

p. cm.

Includes index.

ISBN 0-13-177601-0

1. Stock-exchange—United States. 2. Securities—United States.  
3. Commodity exchanges—United States. I. Title.

HG4910.W365 1993

93-25716

332.64'273—dc20

CIP

© 1993, 1986 by NYIF Corp.

All rights reserved. No part of this book may be reproduced in any form or by any means, without permission in writing from the publisher.

Printed in the United States of America

10 9 8 7 6

This publication is designed to provide accurate and authoritative information in regard to the subject matter covered. It is sold with the understanding that the publisher is not engaged in rendering legal, accounting, or other professional service. If legal advice or other expert assistance is required, the services of a competent professional person should be sought.  
—From the Declaration of Principles jointly adopted by a Committee of the American Bar Association and a Committee of Publishers and Associations

ISBN 0-13-177601-0

**ATTENTION: CORPORATIONS AND SCHOOLS**

NYIF books are available at quantity discounts with bulk purchase for educational, business, or sales promotional use. For information, please write to: Prentice Hall Special Sales, 240 Frisch Court, Paramus, New Jersey 07652. Please supply: title of book, ISBN number, quantity, how the book will be used, date needed.



**NEW YORK INSTITUTE OF FINANCE**  
Paramus, NJ 07652

A Simon & Schuster Company

On the World Wide Web at <http://www.phdirect.com>

Prentice-Hall International (UK) Limited, *London*  
Prentice-Hall of Australia Pty. Limited, *Sydney*  
Prentice-Hall Canada Inc., *Toronto*  
Prentice-Hall Hispanoamericana, S.A., *Mexico*  
Prentice-Hall of India Private Limited, *New Delhi*  
Prentice-Hall of Japan, Inc., *Tokyo*  
Simon & Schuster Asia Pte. Ltd., *Singapore*  
Editora Prentice-Hall do Brasil, Ltda., *Rio de Janeiro*

executes because of priority, C executes because of precedence, and B executes before D because of time advantage.

**Parity.** When two brokers can both fill the order and both enter their intentions at the same time, there isn't any logical way of awarding the trade. This is parity. In this case, either the brokers agree to an equitable distribution, or they flip a coin and the winner takes the trade.

*Example:* The quote is 22-1/2, and the bids are:

Broker M: 100 shares, 10:14

Broker N: 100 shares, 10:15

Broker O: 100 shares, 10:15

If Broker Z enters the crowd with a sell market order for 100 shares, Broker M executes. If Broker Z enters the crowd with a sell market order for 200 shares, M executes 100 shares. Since Brokers N and O can fill or best fill the order and neither has a time advantage, they have parity. So Brokers N and O either agree to one of these two taking the 100 shares or toss a coin, and the winner of the toss executes 100 shares.

When an execution takes place, *the floor is cleared*, all remaining bids or offers at that price must be resubmitted. This procedure keeps quotes updated while reaffirming all orders.

### The Specialist's Book

Specialists enter public orders, that are away from the market, in their books by price and in the order they are received.

*Example:* See Figure 4-2. If this specialist's book represents the highest bid and lowest offer of the crowd, the quote is 22 1/4-5/8. The highest bid is 22 1/4, the lowest offer, 22 5/8. If these orders are the only shares comprising the quote, the size is 5 by 9. The largest order for a buy at 22 1/4 is for 500 shares (200 by Broker D and 300 by Broker E). The largest order for sale at 22 5/8 is 900 shares (300 by Broker F and 600 by Broker G).

Specialists execute orders from their books by price on a first-in/first-out (FIFO) basis. The first order in is the first order out.

*Example:* If Broker Z enters the crowd with a 200-share buy order at the market, the specialist executes 200 of Broker F's 300-share order at 22 5/8.

because of precedence, and B tags.

both fill the order and both, there isn't any logical way. In this case, either the auction, or they flip a coin and

orders are:

If a market order for 100 shares, a crowd with a sell market order and since Brokers N and O can fill or advantage, they have parity. So these two taking the 100 shares and executes 100 shares.

When the floor is cleared, all remaining orders be resubmitted. This process affirming all orders.

Orders are away from the market, in order they are received.

The specialist's book represents the highest quote is 22 1/4-5/8. The highest of these orders are the only shares available. The largest order for a buy at 22 1/4 and 300 by Broker E). The largest order for a sell at 22 7/8 and 400 by Broker S.

Orders in their books by price on a first order in is the first order

with a 200-share buy order at the price of 22 1/4 by Broker E and a 300-share order at 22 5/8 by Broker F.

FIGURE 4-2. A page in the specialist's book.

BUY		SELL
BKR R - 100	22	
BKR L - 300	1/8	
BKR A - 500		
BKR D - 200	1/4	
BKR E - 300		
	3/8	
	1/2	
	5/8	BKR F - 300
		BKR G - 600
	3/4	BKR B - 100
		BKR M - 200
	7/8	BKR S - 400

The NYSE specialist's book is maintained on a CRT and referred to as *display book*. This electronic book sorts all orders coming to the specialist in time and price sequence; it also keeps track of executed orders, so that inquiries from member firms may be quickly researched.

Display book is part of a larger system, known as DOT (*designated order turnaround*). DOT orders are executed by the specialist either against other DOT orders (orders entered by member firms into the DOT system), or against brokers in the "crowd" or against the specialist's own position.

### THE AMERICAN STOCK EXCHANGE (AMEX)

The Amex membership is basically like the NYSE's. On the floor are commission house brokers, two-dollar brokers, specialists, and traders. Their functions are very similar to those of their counterparts on the NYSE.

One notable difference from the NYSE is the way the member firms communicate with their employees. Conversations regarding security, shares, price, and the like are carried on through a system of hand signals. The individuals actually discuss quote, size, and other terms without speaking or writing a word.

The Amex trading floor also operates differently than the NYSE. Its procedure for awarding trades is known as *priority prorata*. Under this system, one broker may have priority, as on the NYSE. After priority, however, shares are allocated in round lots among the other participating brokers. Precedence and parity do not play a part in the Amex procedure.

*Example:* Three brokers enter bids for ABC at 26, as follows:

Broker A: 100 shares, 10:14

Broker B: 200 shares, 10:15

Broker C: 300 shares, 10:15

Broker X enters the crowd with a 400-share sell market order. Broker A executes a trade for 100 shares (priority). Broker B then buys 100 shares, and Broker C takes 200 shares. In other words, the remaining 300 shares are distributed "prorata."

# Explore Litigation Insights

Docket Alarm provides insights to develop a more informed litigation strategy and the peace of mind of knowing you're on top of things.

## Real-Time Litigation Alerts



Keep your litigation team up-to-date with **real-time alerts** and advanced team management tools built for the enterprise, all while greatly reducing PACER spend.

Our comprehensive service means we can handle Federal, State, and Administrative courts across the country.

## Advanced Docket Research



With over 230 million records, Docket Alarm's cloud-native docket research platform finds what other services can't. Coverage includes Federal, State, plus PTAB, TTAB, ITC and NLRB decisions, all in one place.

Identify arguments that have been successful in the past with full text, pinpoint searching. Link to case law cited within any court document via Fastcase.

## Analytics At Your Fingertips



Learn what happened the last time a particular judge, opposing counsel or company faced cases similar to yours.

Advanced out-of-the-box PTAB and TTAB analytics are always at your fingertips.

## API

Docket Alarm offers a powerful API (application programming interface) to developers that want to integrate case filings into their apps.

## LAW FIRMS

Build custom dashboards for your attorneys and clients with live data direct from the court.

Automate many repetitive legal tasks like conflict checks, document management, and marketing.

## FINANCIAL INSTITUTIONS

Litigation and bankruptcy checks for companies and debtors.

## E-DISCOVERY AND LEGAL VENDORS

Sync your system to PACER to automate legal marketing.