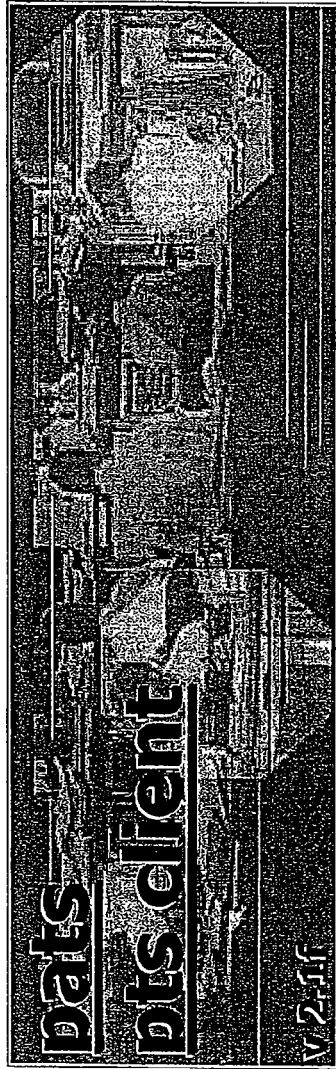


EXHIBIT
Garrow 119
5-26-05 MB



PAT Systems Ltd
22 Shand Street,
London SE1 2ES

www.patsystems.com

PATS 00067

DEFENDANT'S

Symbol	Description	Price	Change	Volume	High	Low	Open	Close	Adj. Close	Div. Yield	Div. Payout	Div. Date	Div. Frequency	Div. Type	Div. Amount	Div. Status
MAH	MAH V LUNA NATIONAL V MAR 00	111	116	11												
LUN	LUN V LUNA BOND V MAR 00	103.00	102.07	103												
MIM	MIM V CAC AD V MAR 00	5636.50	5625.00	108												
LIF	LIF V FTSE V MAR 00	6510.00	6519.00	103												
LUN	LUN V CAC AD V MAR 00	5636.50	5625.00	108												
EM	EM V F MIB SMI V MAR 00	1256.75	1257.00	52												
WEE	WEE V DOW V MAR 00	88.75	88.75	13												

USEFUL NUMBERS:

TRADER SUPPORT: 0171 940 0460

TECHNICAL SUPPORT: 0171 940 225

PATS 00068

Contract	Bid	Offer	Limit
Eurex \ EuroBONL \ MAR00	102.96	102.96	102.96
Size	22	93	61
Eurex \ SCHATZ \ MAR00	102.47	102.48	102.46
Size	107	403	100
Eurex \ EuroBUND \ MAR00	103.11	103.12	103.11
Size	19	3	62
Liffe \ EBTP \ MAR00	102.00	102.25	102.22
Size	5	30	48
Liffe \ EURBOR.1 \ MAR00	96.335	96.340	96.340
Size	377	321	20
Liffe \ EURBOR.1 \ JUN00	95.940	95.945	95.940
Size	119	345	10
Liffe \ EURBOR.1 \ SEP00	95.650	95.655	95.650
Size	184	157	4
Liffe \ EURBOR.1 \ DEC00	95.260	95.265	95.265
Size	198	1	4
Liffe \ FTSE100 \ MAR00	6705.0	6708.0	6705.0
Size	4	2	1
Liffe \ JGB \ MAR00	132.00	132.05	132.00
Size	7	1	2
Liffe \ LONGGILT \ MAR00	109.76	109.80	109.75
Size	8	30	1
Liffe \ SHORTSTERL \ MAR00	93.52	93.53	93.53
Size	732	24	42
Liffe \ SHORTSTERL \ JUN00	93.13	93.14	93.14
Size	101	10	40
Met \ BONO-10 \ MAR00	8688	8702	8699
Size	10	35	1

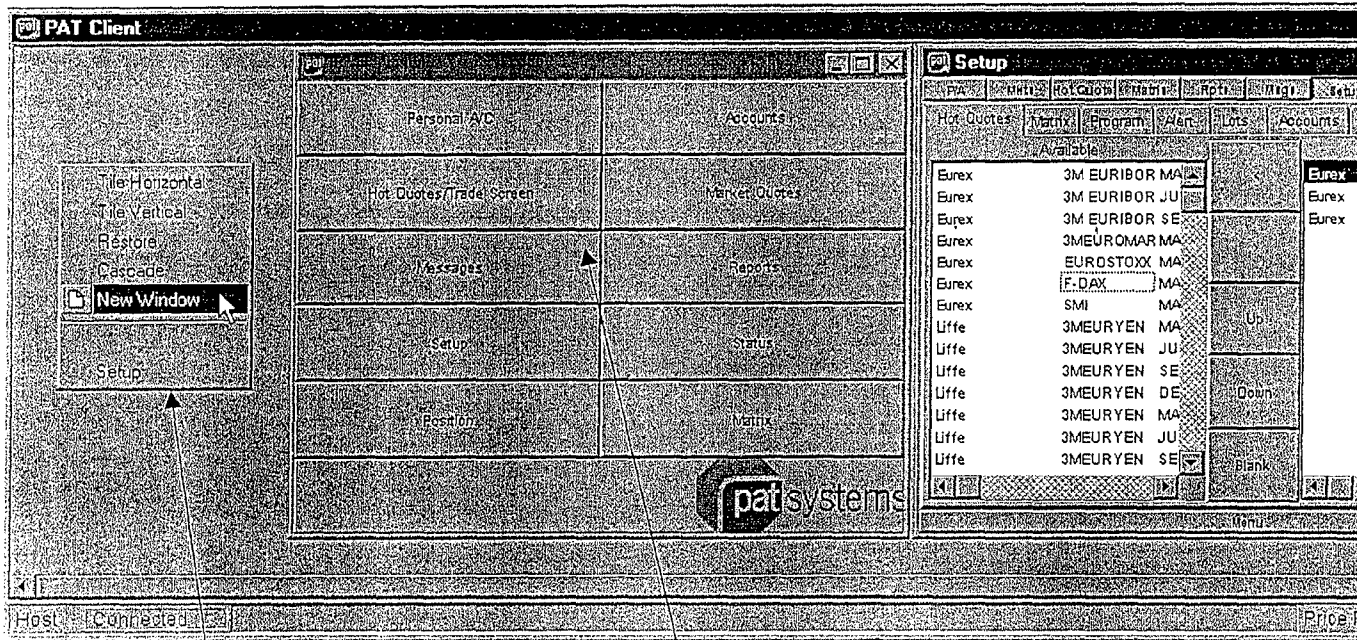
SHORTSTERL	JUN00	SEP00	DEC00	MAR01
MAR00	0.38 0.40 0.39	0.67 0.69 0.66	0.91 0.92	0.92 0.94 0.93
93.52 93.53	124 374 1	26 24 1	30 24	85 74 9
	JUN00	0.28 0.29 0.29	0.50 0.53 0.48	0.63 0.55 0.54
	8 983 6	34 10 23	85 18 50	
	SEP00	0.23 0.24 0.23	0.26 0.28 0.26	0.03 0.05 0.03
	12 50 1	155 200 34	23 44 42	
	MAR01			94 59 2 50

Contract	Bid	Offer	Limit
Eurex \ EuroBONL \ MAR00	0	0	0
Eurex \ EuroBUND \ MAR00	0	0	0
Eurex \ SCHATZ \ MAR00	0	0	0
Liffe \ EBTP \ MAR00	0	0	0
Liffe \ LONGGILT \ MAR00	0	0	0

Liffe	LONGGILT
109.76	0 1 6
109.74	20 28
109.72	1 29
109.71	5 34
109.70	1 35
109.69	3 38
109.68	5 43
109.66	5 48
109.65	1 49
109.63	2 51

PATS 00069

Customising the layout



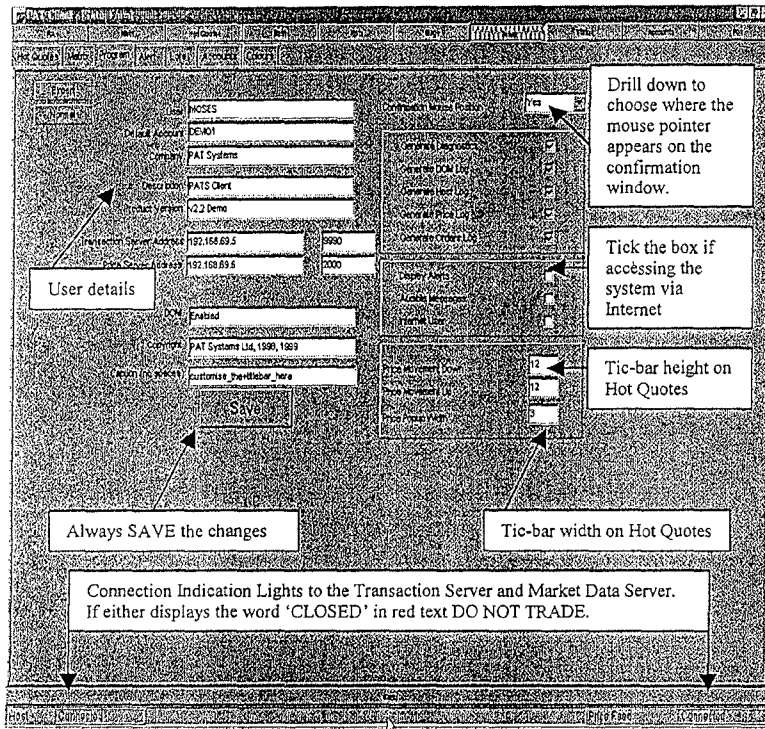
When first logging into the Client, the PATS (grey) desktop is displayed. To open trading windows on your PATS screen right click and select New Window.

This will open a PATS Menu where you may select which windows to open. To view Market prices open a HOT QUOTES window.

To select the contract to trade/view, enter the Hot Quotes window, select the contracts made available for the chosen contract, use the arrow keys to move onto the 'board' tab. Click on the BLANK tab. Click on the contract and the contract details tabs can arrange to appear.

PATS 00070

Customising the layout



Remember: All windows within the PATS desktop are independent of each other and font sizes, colours, default trade quantities, and other specific settings must be made for each window else all windows will appear using the default size. It is necessary to SAVE any settings for them to take effect.

To maintain network efficiency and minimize the work that the Client PC processor has to do, each window can subscribe to its own set of market data. For this reason you must select the contracts for the SET UP-HOT QUOTES so as to view key data on the P/A, MARKETS, HOT QUOTES and ORDER screens. This also means that it is possible to create multiple Hot Quotes e.g. one per exchange and give these Windows their own title bar caption.

It is possible to disable the confirmation window. You should consult your system administrator prior to doing this. The effect of this will be that as a price is clicked, an order is entered-there is no opportunity to check the order details.

PATS 00071

Explore Litigation Insights

Docket Alarm provides insights to develop a more informed litigation strategy and the peace of mind of knowing you're on top of things.

Real-Time Litigation Alerts



Keep your litigation team up-to-date with **real-time alerts** and advanced team management tools built for the enterprise, all while greatly reducing PACER spend.

Our comprehensive service means we can handle Federal, State, and Administrative courts across the country.

Advanced Docket Research



With over 230 million records, Docket Alarm's cloud-native docket research platform finds what other services can't. Coverage includes Federal, State, plus PTAB, TTAB, ITC and NLRB decisions, all in one place.

Identify arguments that have been successful in the past with full text, pinpoint searching. Link to case law cited within any court document via Fastcase.

Analytics At Your Fingertips



Learn what happened the last time a particular judge, opposing counsel or company faced cases similar to yours.

Advanced out-of-the-box PTAB and TTAB analytics are always at your fingertips.

API

Docket Alarm offers a powerful API (application programming interface) to developers that want to integrate case filings into their apps.

LAW FIRMS

Build custom dashboards for your attorneys and clients with live data direct from the court.

Automate many repetitive legal tasks like conflict checks, document management, and marketing.

FINANCIAL INSTITUTIONS

Litigation and bankruptcy checks for companies and debtors.

E-DISCOVERY AND LEGAL VENDORS

Sync your system to PACER to automate legal marketing.