



(12) **United States Patent**  
**Fang et al.**

(10) **Patent No.:** **US 6,243,816 B1**  
(45) **Date of Patent:** **Jun. 5, 2001**

(54) **SINGLE SIGN-ON (SSO) MECHANISM  
PERSONAL KEY MANAGER**

(75) Inventors: **Yi Fang**, Austin; **I-Lung Kao**, Round Rock; **Ivan Matthew Milman**; **George Conerly Wilson**, both of Austin, all of TX (US)

(73) Assignee: **International Business Machines Corporation**, Armonk, NY (US)

(\*) Notice: Subject to any disclaimer, the term of this patent is extended or adjusted under 35 U.S.C. 154(b) by 0 days.

(21) Appl. No.: **09/070,512**

(22) Filed: **Apr. 30, 1998**

(51) **Int. Cl.**<sup>7</sup> ..... **H04L 9/00**

(52) **U.S. Cl.** ..... **713/202; 713/201; 713/183; 709/229; 707/9**

(58) **Field of Search** ..... **713/201, 153, 713/155, 183, 202; 709/229; 707/9**

(56) **References Cited**

**U.S. PATENT DOCUMENTS**

4,604,686	8/1986	Reiter et al. ....	395/500
4,937,036	6/1990	Beard et al. ....	340/706
4,999,766	3/1991	Peters et al. ....	364/200
5,021,949	6/1991	Morten et al. ....	364/200
5,047,923	9/1991	Elstner et al. ....	364/200
5,226,172	7/1993	Seymour et al. ....	395/800
5,241,594	8/1993	Kung ..... 380/4	
5,329,619	7/1994	Pagé et al. ....	395/200.09
5,347,632	9/1994	Filepp et al. ....	395/200.09
5,369,778	11/1994	San Soucie et al. ....	395/800
5,434,918	7/1995	Kung et al. ....	380/25
5,442,342	8/1995	Kung ..... 340/925.34	
5,442,771	8/1995	Filepp et al. ....	395/200.08
5,564,043	10/1996	Seifert ..... 695/614	
5,579,479	11/1996	Plum ..... 395/188.01	
5,590,199 *	12/1996	Krajewski, Jr. et al. ....	380/25
5,594,910	1/1997	Filepp et al. ....	395/800
5,655,077 *	8/1997	Jones et al. ....	713/201
5,684,950 *	11/1997	Dare et al. ....	713/201

5,768,504 *	6/1998	Kells et al. ....	713/201
5,864,665 *	1/1999	Tran ..... 713/201	
5,944,824 *	8/1999	He ..... 713/201	
6,000,033 *	12/1999	Kelley et al. ....	713/201
6,006,333 *	12/1999	Nielsen ..... 713/202	

**FOREIGN PATENT DOCUMENTS**

0751453	5/1996	(EP) .....	G06F/1/00
2281645	3/1993	(GB) .....	G06F/12/14

**OTHER PUBLICATIONS**

Vacca, "Sign On to Streamlined Security", Journal: Data-mation, v40 n18 p. 65, Sep. 1994.\*

IBM Technical Disclosure Bulletin, "Network Signon Coordination Configuration," vol. 36, No. 12, Dec. 1993 (pp. 389-396).

IBM Technical Disclosure Bulletin, "Logon Assist for Multiple Logons," vol. 32, No. 8A, Jan. 1990 (pp. 303-305).

IBM Technical Disclosure Bulletin, "Temporary Global Passwords," vol. 36, No. 3, Mar. 1993 (pp. 451-453).

\* cited by examiner

*Primary Examiner*—Robert Beausoleil

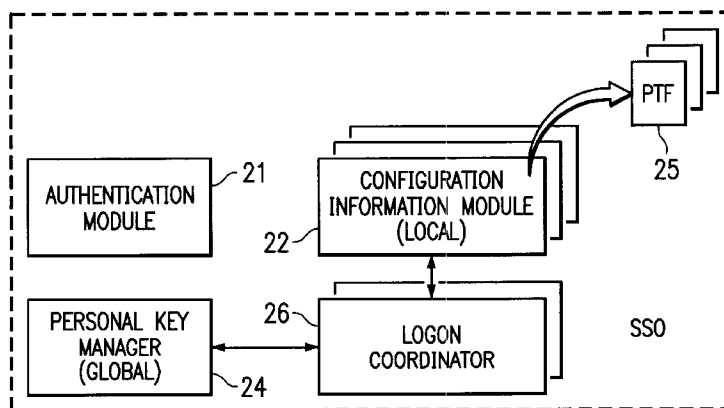
*Assistant Examiner*—Scott T. Baderman

(74) *Attorney, Agent, or Firm*—Jeffrey S. LaBaw; David Judson; Joseph R. Burwell

(57) **ABSTRACT**

A method of managing passwords of users desiring access to multiple target resources in a computer enterprise environment. For each given user, each of a set of id/password pairs is associated to each of a set of one or more respective targets. Each id/password pair is normally required to access a respective target resource. The targets of each given user are stored in a globally-accessible database. In response to entry by a given user at a client machine of a single-sign on (SSO) id/password, the globally-accessible database is accessed from a personal key manager (PKM) server to retrieve the targets of the given user. The targets are returned to the PKM server, which then uses data therein to access the respective target resources on behalf of the given user at the client machine.

**31 Claims, 8 Drawing Sheets**



Plaid Technologies Inc.

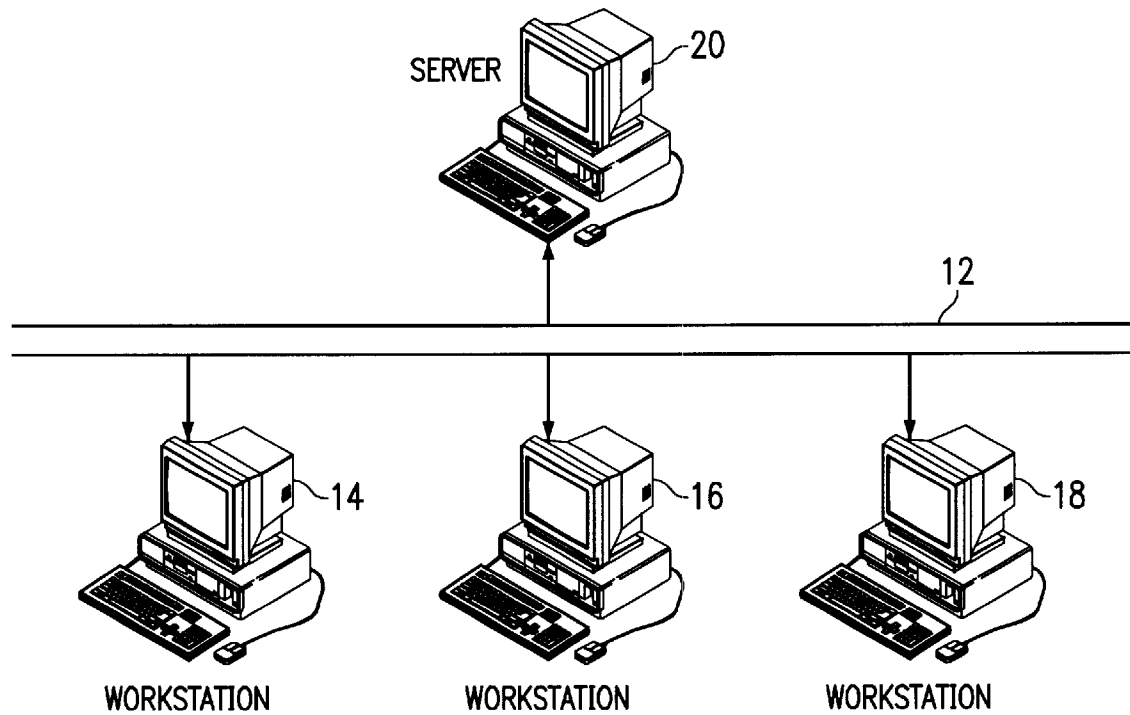


FIG. 1

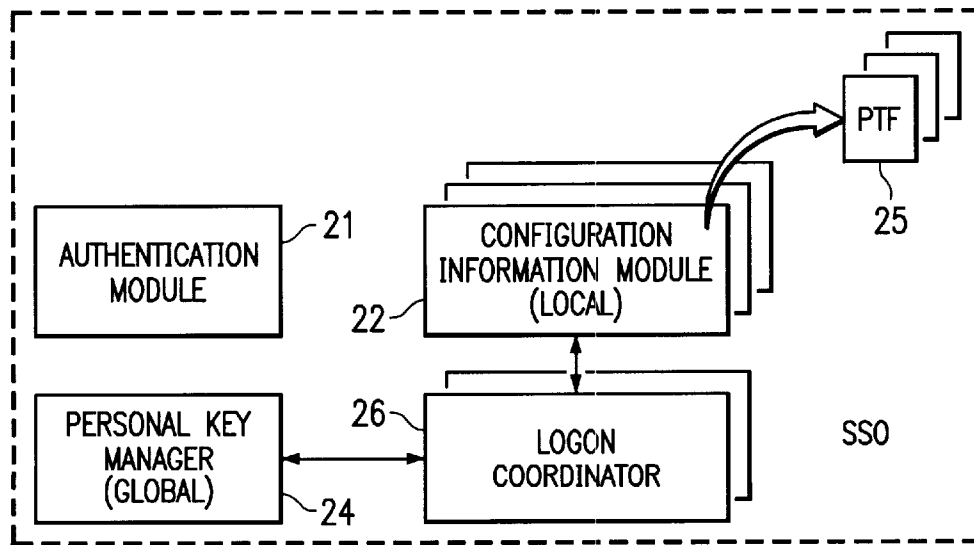
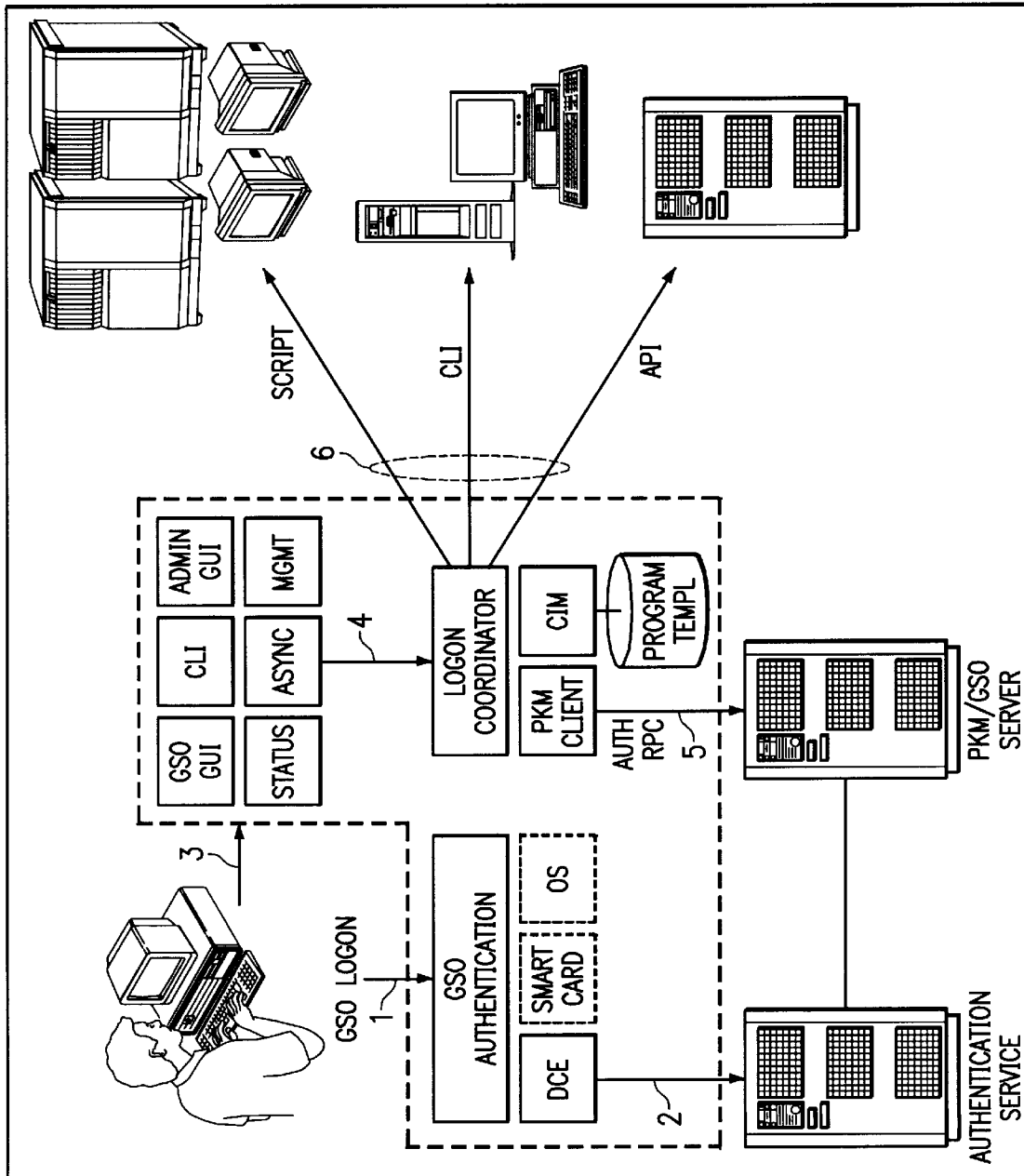


FIG. 2

FIG. 3



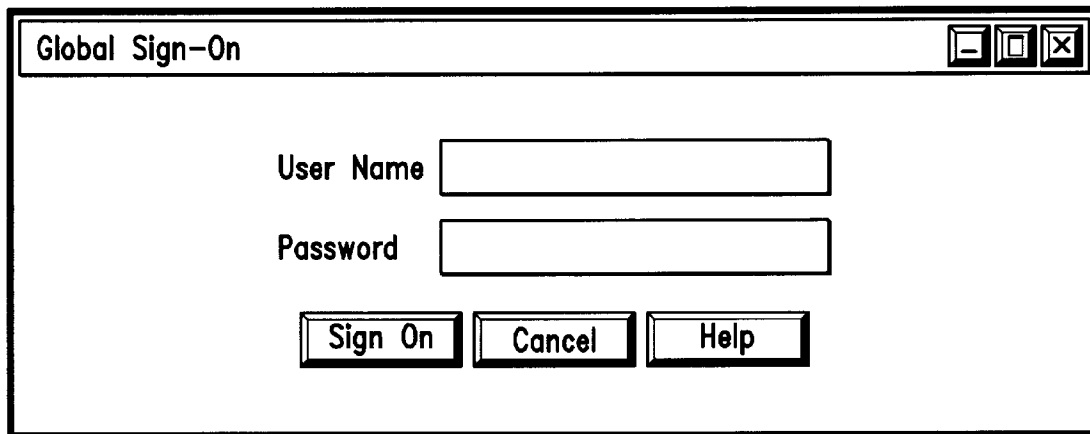


FIG. 4

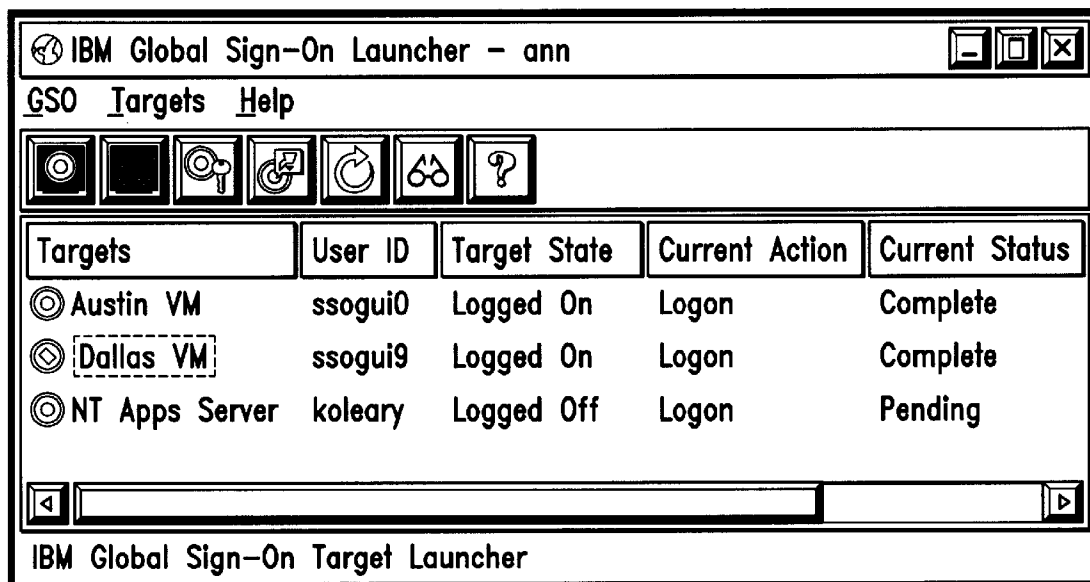


FIG. 5

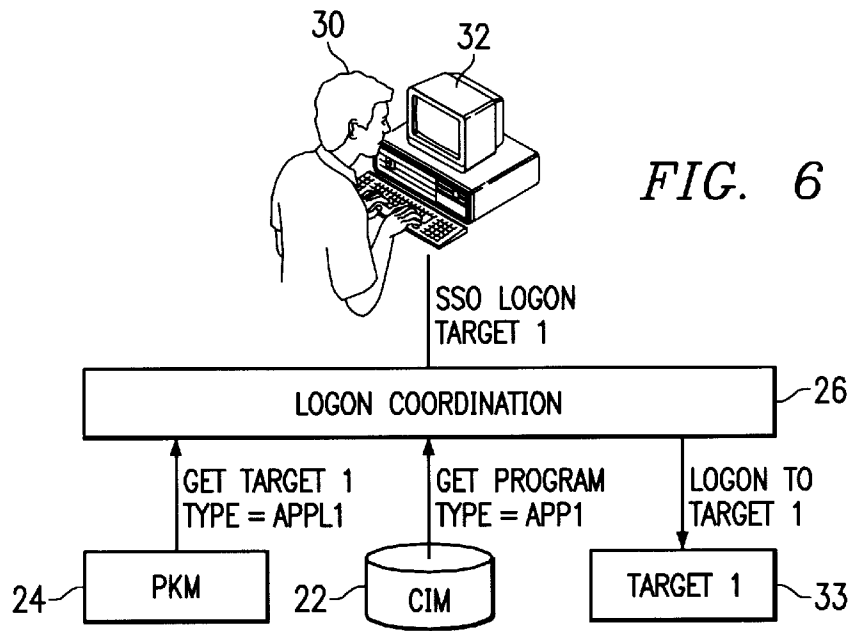


FIG. 6

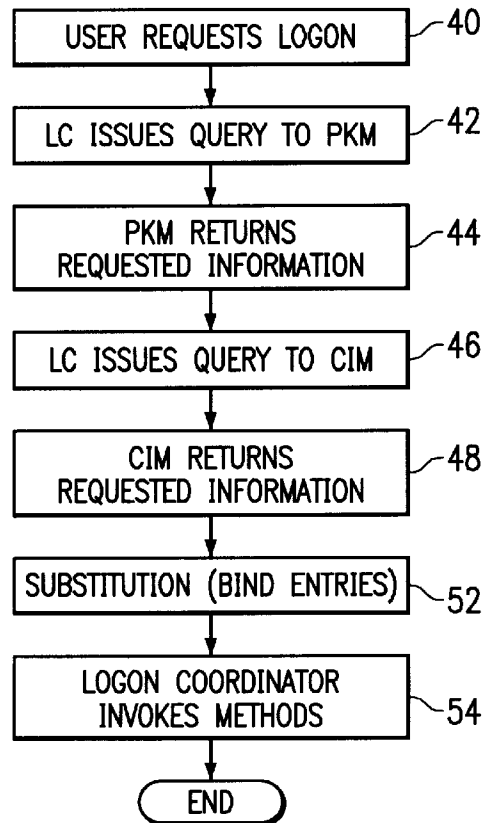


FIG. 7

# Explore Litigation Insights

Docket Alarm provides insights to develop a more informed litigation strategy and the peace of mind of knowing you're on top of things.

## Real-Time Litigation Alerts



Keep your litigation team up-to-date with **real-time alerts** and advanced team management tools built for the enterprise, all while greatly reducing PACER spend.

Our comprehensive service means we can handle Federal, State, and Administrative courts across the country.

## Advanced Docket Research



With over 230 million records, Docket Alarm's cloud-native docket research platform finds what other services can't. Coverage includes Federal, State, plus PTAB, TTAB, ITC and NLRB decisions, all in one place.

Identify arguments that have been successful in the past with full text, pinpoint searching. Link to case law cited within any court document via Fastcase.

## Analytics At Your Fingertips



Learn what happened the last time a particular judge, opposing counsel or company faced cases similar to yours.

Advanced out-of-the-box PTAB and TTAB analytics are always at your fingertips.

## API

Docket Alarm offers a powerful API (application programming interface) to developers that want to integrate case filings into their apps.

## LAW FIRMS

Build custom dashboards for your attorneys and clients with live data direct from the court.

Automate many repetitive legal tasks like conflict checks, document management, and marketing.

## FINANCIAL INSTITUTIONS

Litigation and bankruptcy checks for companies and debtors.

## E-DISCOVERY AND LEGAL VENDORS

Sync your system to PACER to automate legal marketing.