



(12) **United States Patent**
Inala et al.

(10) **Patent No.:** **US 6,199,077 B1**
(45) **Date of Patent:** **Mar. 6, 2001**

(54) **SERVER-SIDE WEB SUMMARY
GENERATION AND PRESENTATION**

6,041,326 * 3/2000 Amro et al. 707/10
6,108,686 * 8/2000 Williams, Jr. 709/202
6,119,101 * 9/2000 Peckover 705/10 X

(75) Inventors: **Suman Kumar Inala**, Santa Clara; **P Venkat Rangan**, San Diego;
Ramakrishna Satyavolu, Santa Clara,
all of CA (US)

OTHER PUBLICATIONS

Stanley, Tracey, "Intelligent Searching Agents on the Web", 4 pages, <http://www.ariadne.ac.uk/issu7/search-engines/> Jan. 1997.*

(73) Assignee: **Yodlee.com, Inc.**, Sunnyvale, CA (US)

Jansen, James, "Using an Intelligent Agent to Enhance Search Engine Performance", 16 pages, <http://www.firstmonday.dk/issues/issue2_3/jansen/> Dec. 1998.*

(*) Notice: Subject to any disclaimer, the term of this patent is extended or adjusted under 35 U.S.C. 154(b) by 0 days.

Lesser, Victor et al, "BIG: A Resource_Bounded Information Gathering Agent", 18 pages, <http://dis.cs.umass.edu/research/big/> Jan. 1998.*

* cited by examiner

(21) Appl. No.: **09/323,598**

(22) Filed: **Jun. 1, 1999**

Related U.S. Application Data

Primary Examiner—Joseph H. Feild
(74) *Attorney, Agent, or Firm*—Donald R. Boys; Central Coast Patent Agency

(63) Continuation-in-part of application No. 09/208,740, filed on Dec. 8, 1998.

(57) **ABSTRACT**

(51) **Int. Cl.**⁷ **G06F 17/21**

A portal server includes a software agent configured to do summary searches for subscribers based on Internet destinations provided by the subscribers, to retrieve information from such destinations based on pre-programmed site information, and to download the summary information to the subscriber. The destinations and the nature of the information to be retrieved is pre-programmed. There is further a configuration and initiation interface for a subscriber to set up and start a summary search. In some cases the summary searches are configured for individual clients as templates stored and retrieved at the Internet-connected server. Also in some cases retrieved information is immediately sent to the subscriber, and in other situations such information is saved at the portal to be retrieved by a subscriber at a later time. In preferred embodiments of the invention autologins are accomplished for a subscriber at Internet destinations by use of pre-stored configuration information.

(52) **U.S. Cl.** **707/501; 709/202; 709/218; 713/202; 704/1**

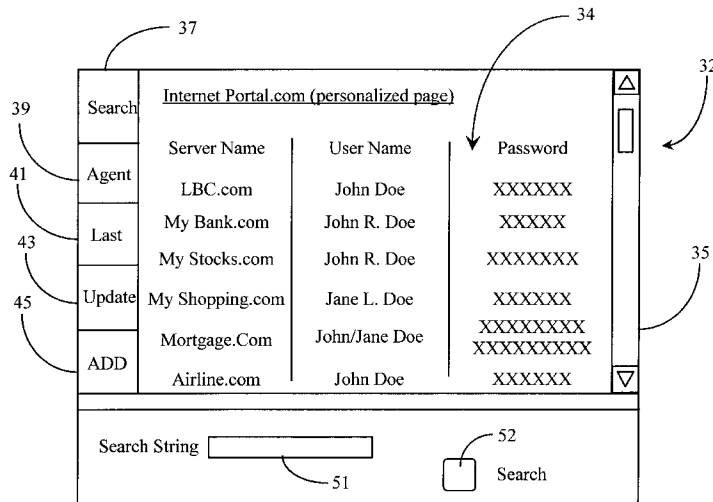
(58) **Field of Search** **707/501, 513, 707/1, 3, 4, 5, 9-10; 713/201-202; 705/26-27; 709/202, 218; 704/1**

(56) **References Cited**

U.S. PATENT DOCUMENTS

5,649,186	*	7/1997	Ferguson	707/10
5,708,825	*	1/1998	Sotomayor	707/501
5,794,233	*	8/1998	Rubinstein	707/4
5,855,015	*	12/1998	Shoham	707/5
5,931,907	*	8/1999	Davies et al.	709/218
5,983,227	*	11/1999	Nazem et al.	707/10
5,987,466	*	11/1999	Greer et al.	707/10
6,029,180	*	2/2000	Murata et al.	707/501
6,029,182	*	2/2000	Nehab et al.	707/523
6,032,162	*	2/2000	Burke	707/501
6,038,668	*	8/2000	Chipman et al.	713/201

12 Claims, 6 Drawing Sheets



Plaid Technologies Inc.

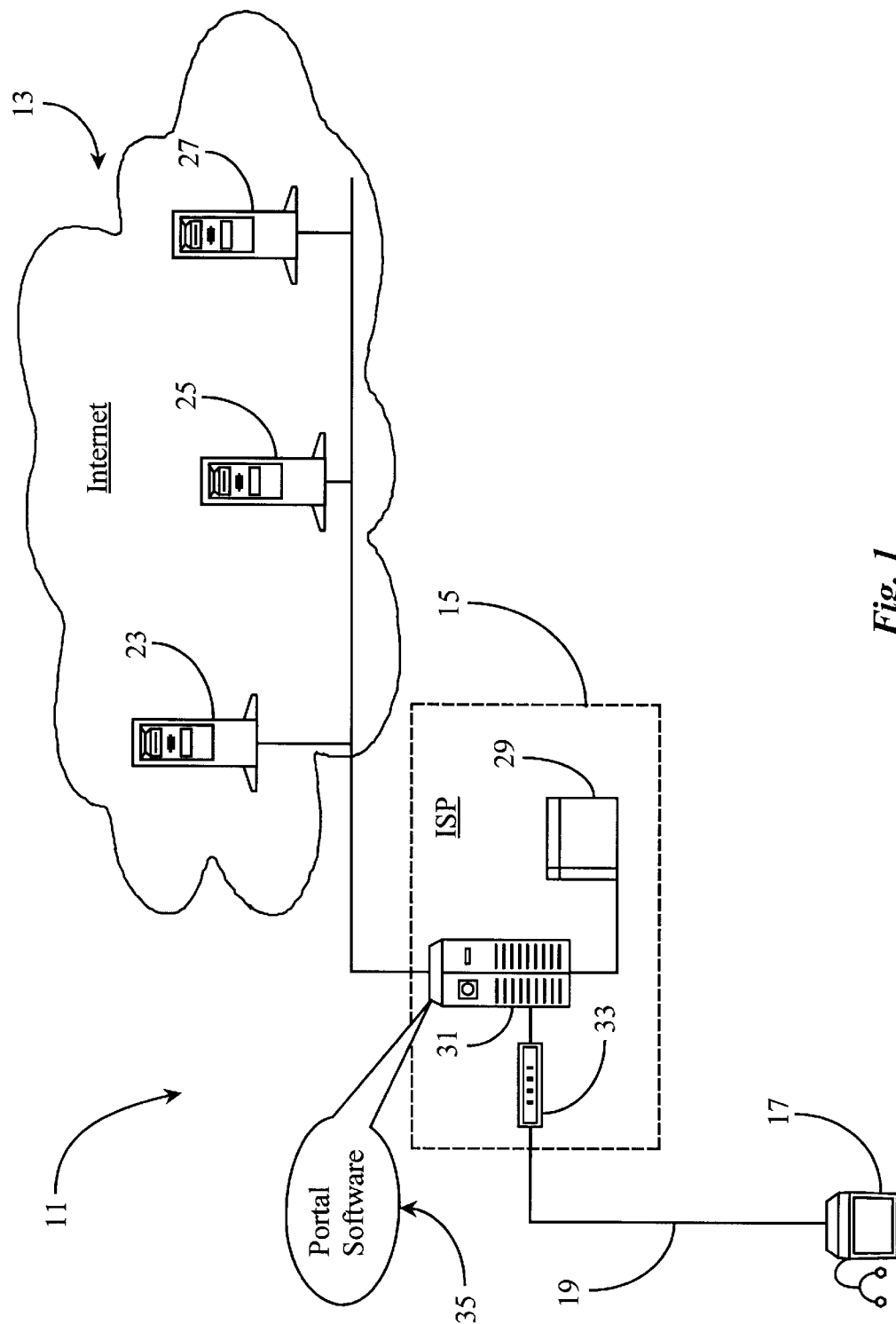


Fig. 1

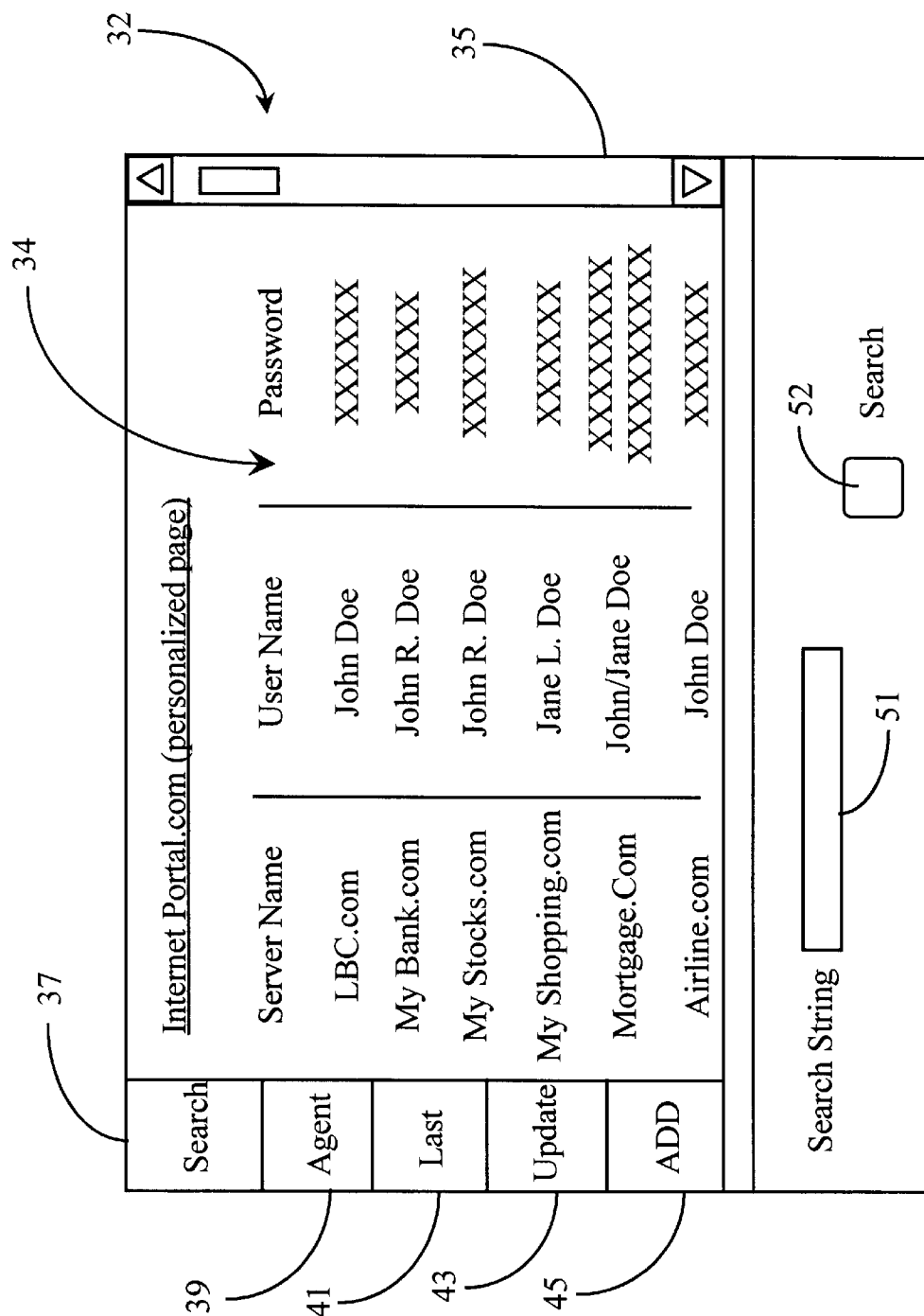


Fig. 2

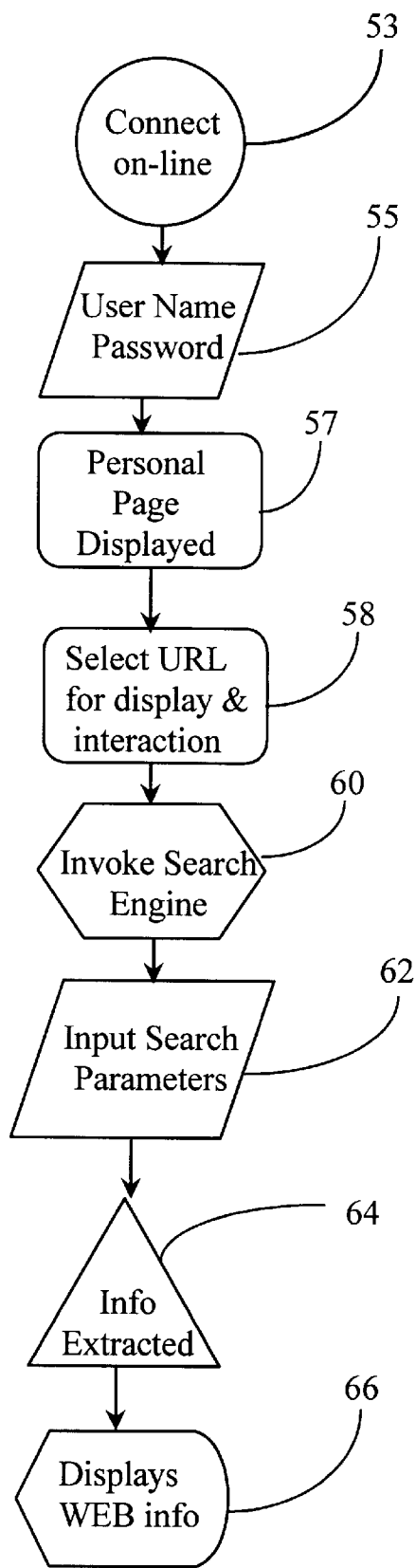


Fig. 3

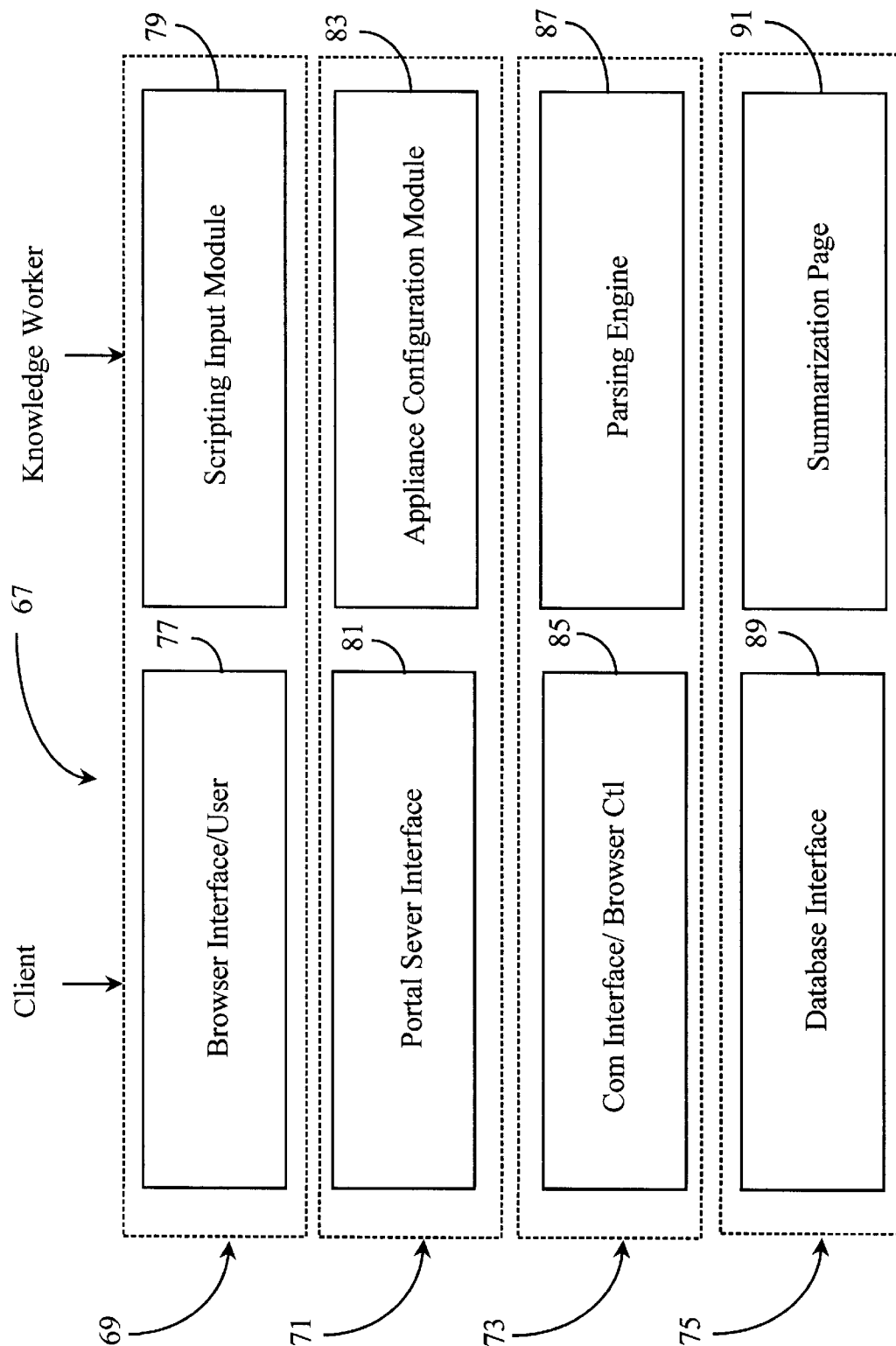


Fig. 4

Explore Litigation Insights

Docket Alarm provides insights to develop a more informed litigation strategy and the peace of mind of knowing you're on top of things.

Real-Time Litigation Alerts



Keep your litigation team up-to-date with **real-time alerts** and advanced team management tools built for the enterprise, all while greatly reducing PACER spend.

Our comprehensive service means we can handle Federal, State, and Administrative courts across the country.

Advanced Docket Research



With over 230 million records, Docket Alarm's cloud-native docket research platform finds what other services can't. Coverage includes Federal, State, plus PTAB, TTAB, ITC and NLRB decisions, all in one place.

Identify arguments that have been successful in the past with full text, pinpoint searching. Link to case law cited within any court document via Fastcase.

Analytics At Your Fingertips



Learn what happened the last time a particular judge, opposing counsel or company faced cases similar to yours.

Advanced out-of-the-box PTAB and TTAB analytics are always at your fingertips.

API

Docket Alarm offers a powerful API (application programming interface) to developers that want to integrate case filings into their apps.

LAW FIRMS

Build custom dashboards for your attorneys and clients with live data direct from the court.

Automate many repetitive legal tasks like conflict checks, document management, and marketing.

FINANCIAL INSTITUTIONS

Litigation and bankruptcy checks for companies and debtors.

E-DISCOVERY AND LEGAL VENDORS

Sync your system to PACER to automate legal marketing.