



US007212999B2

(12) **United States Patent**  
**Friesen et al.**

(10) **Patent No.:** **US 7,212,999 B2**  
(45) **Date of Patent:** **May 1, 2007**

(54) **USER INTERFACE FOR AN ELECTRONIC TRADING SYSTEM**

5,077,665 A 12/1991 Silverman et al.

(Continued)

**FOREIGN PATENT DOCUMENTS**

(75) Inventors: **Richard W. Friesen**, Fairfax, CA (US);  
**Peter C. Hart**, San Rafael, CA (US)

EP 0 388 162 A2 \* 3/1990

(Continued)

**OTHER PUBLICATIONS**

(73) Assignee: **Trading Technologies International, Inc.**, Chicago, IL (US)

How the Futures Markets Work, Jake Bernstein, 1989, New York Institute of Finance, pp. 62-67.\*

(Continued)

(\* ) Notice: Subject to any disclaimer, the term of this patent is extended or adjusted under 35 U.S.C. 154(b) by 0 days.

*Primary Examiner*—Charles R. Kyle

(74) *Attorney, Agent, or Firm*—McDonnell Boehnen Hulbert & Berghoff LLP

(57) **ABSTRACT**

(21) Appl. No.: **09/289,550**

A user interface for an electronic trading exchange is provided which allows a remote trader to view in real time bid orders, offer orders, and trades for an item, and optionally one or more sources of contextual data. Individual traders place orders on remote client terminals, and this information is routed to a transaction server. The transaction server receives order information from the remote terminals, matches a bid for an item to an offer for an item responsive to the bid corresponding with the offer, and communicates outstanding bid and offer information, and additional information (such as trades and contextual data) back to the client terminals. Each client terminal displays all of the outstanding bids and offers for an item, allowing the trader to view trends in orders for an item. A priority view is provided in which orders are displayed as tokens at locations corresponding to the values of the orders. The size of the tokens reflects the quantity of the orders. An alternate view positions order icons at a location which reflects the value and quantity of the order. Additionally, contextual data for the item is also displayed to allow the trader to consider as much information as possible while making transaction decisions. A pit panel view is also provided in which traders connected to the pit are represented by icons, and are displayed corresponding to an activity level of the trader.

(22) Filed: **Apr. 9, 1999**

(65) **Prior Publication Data**

US 2003/0097325 A1 May 22, 2003

(51) **Int. Cl.**  
**G06Q 40/00** (2006.01)

(52) **U.S. Cl.** ..... **705/37; 705/35; 345/440.2**

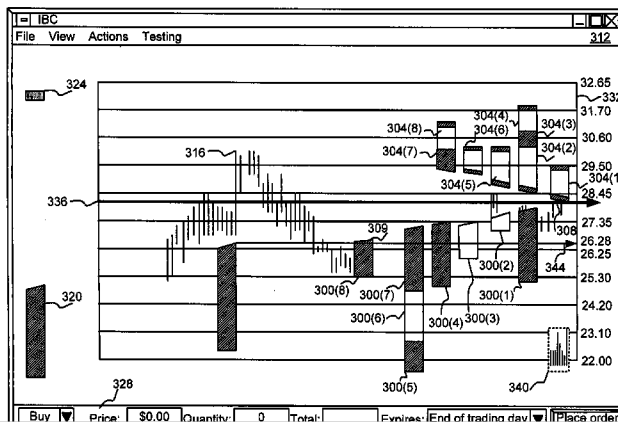
(58) **Field of Classification Search** ..... **705/37**  
See application file for complete search history.

(56) **References Cited**

**U.S. PATENT DOCUMENTS**

|             |        |                    |         |
|-------------|--------|--------------------|---------|
| 4,674,044 A | 6/1987 | Kalmus et al. .... | 364/408 |
| 4,750,135 A | 6/1988 | Boilen             |         |
| 4,799,156 A | 1/1989 | Shavit et al. .... | 364/401 |
| 4,823,265 A | 4/1989 | Nelson             |         |
| 4,903,201 A | 2/1990 | Wagner             |         |
| 5,038,284 A | 8/1991 | Kramer             |         |

**35 Claims, 11 Drawing Sheets**



U.S. PATENT DOCUMENTS

|              |      |         |                        |          |
|--------------|------|---------|------------------------|----------|
| 5,101,353    | A    | 3/1992  | Lupien et al.          |          |
| 5,136,501    | A *  | 8/1992  | Silverman et al. ....  | 705/37   |
| 5,270,922    | A    | 12/1993 | Higgins                |          |
| 5,297,031    | A    | 3/1994  | Guterman et al. ....   | 364/408  |
| 5,297,032    | A    | 3/1994  | Trojan et al. ....     | 364/408  |
| 5,347,452    | A *  | 9/1994  | Bay, Jr. ....          | 705/37   |
| 5,375,055    | A    | 12/1994 | Togher et al. ....     | 364/408  |
| 5,619,631    | A    | 4/1997  | Schott                 |          |
| 5,689,651    | A    | 11/1997 | Lozman ....            | 395/237  |
| 5,774,877    | A    | 6/1998  | Patterson, Jr. et al.  |          |
| 5,793,301    | A    | 8/1998  | Patterson, Jr. et al.  |          |
| 5,797,002    | A    | 8/1998  | Patterson, Jr. et al.  |          |
| 5,844,572    | A *  | 12/1998 | Schott ....            | 345/440  |
| 5,845,266    | A    | 12/1998 | Lupien et al.          |          |
| 5,915,245    | A    | 6/1999  | Patterson, Jr. et al.  |          |
| 5,924,082    | A    | 7/1999  | Silverman et al.       |          |
| 5,924,083    | A    | 7/1999  | Silverman et al.       |          |
| 5,946,667    | A    | 8/1999  | Tull, Jr. et al.       |          |
| 5,963,923    | A    | 10/1999 | Garber                 |          |
| 5,966,139    | A *  | 10/1999 | Anupam et al. ....     | 345/440  |
| 6,012,046    | A    | 1/2000  | Lupien et al.          |          |
| 6,014,643    | A *  | 1/2000  | Minton ....            | 705/36 R |
| 6,035,287    | A    | 3/2000  | Stallaert et al.       |          |
| 6,098,051    | A    | 8/2000  | Lupien et al.          |          |
| 6,101,484    | A *  | 8/2000  | Halbert et al. ....    | 705/26   |
| 6,131,087    | A *  | 10/2000 | Luke et al. ....       | 705/26   |
| 6,134,535    | A    | 10/2000 | Belzberg               |          |
| 6,161,099    | A *  | 12/2000 | Harrington et al. .... | 705/37   |
| 6,188,403    | B1 * | 2/2001  | Sacerdoti et al. ....  | 345/339  |
| 6,195,647    | B1   | 2/2001  | Martyn et al.          |          |
| 6,272,474    | B1 * | 8/2001  | Garcia ....            | 705/37   |
| 6,282,521    | B1   | 8/2001  | Howorka                |          |
| 6,408,282    | B1 * | 6/2002  | Buist ....             | 705/37   |
| 6,418,419    | B1   | 7/2002  | Nieboer et al.         |          |
| 6,766,304    | B2 * | 7/2004  | Kemp et al. ....       | 705/37   |
| 6,772,132    | B1 * | 8/2004  | Kemp et al. ....       | 705/37   |
| 2001/0034696 | A1 * | 10/2001 | McIntyre ....          | 705/37   |
| 2001/0039527 | A1 * | 11/2001 | Ordish et al. ....     | 705/37   |
| 2002/0023038 | A1 * | 2/2002  | Fritsch et al. ....    | 705/37   |
| 2002/0130868 | A1 * | 9/2002  | Smith ....             | 345/440  |
| 2002/0178096 | A1 * | 11/2002 | Marshall ....          | 705/35   |
| 2003/0009411 | A1 * | 1/2003  | Ram et al. ....        | 705/37   |
| 2004/0099933 | A1 * | 5/2004  | Kimura ....            | 257/675  |
| 2005/0125328 | A1 * | 6/2005  | Schuetter ....         | 705/37   |
| 2005/0256799 | A1 * | 11/2005 | Warsaw et al. ....     | 705/37   |
| 2006/0010066 | A1 * | 1/2006  | Rosenthal et al. ....  | 705/37   |
| 2006/0020538 | A1 * | 1/2006  | Ram et al. ....        | 705/37   |

FOREIGN PATENT DOCUMENTS

JP 2004004287819 A1 \* 10/2004

|    |                  |         |
|----|------------------|---------|
| WO | WO 92/12488      | 7/1992  |
| WO | WO 95/26005 A1   | 9/1995  |
| WO | WO 00/52619 A1   | 9/2000  |
| WO | WO 01/75733 A1 * | 10/2001 |

OTHER PUBLICATIONS

Dictionary of Finance and Investment Terms, John Downes and Jordan Elliot Goodman, 1998, Barrons Educational Services, Inc., p. 329.\*  
 Java Island, copyright 1999 (printed from <http://www.isld.com> on Jun. 11, 1999).  
 Search Report for PCT/US 00/09369.  
 Yahoo! Finance—Option Chain SUNW; 2 pages.  
 APT Brochure, LIFFE Exchange, circa 1990\*.  
 Trading Screen, INTEX of Bermuda, circa 1984\*.  
 Weber, Information Technology in the Major International Financial Markets, Apr. 7, 1993.  
 Trading Screen, TIFFE Exchange, circa 1989-1990\*.  
 Trading Screen, MEFF Exchange, circa 1990\*.  
 Cavaletti, Order Routing Article, Futures Magazine, Feb. 1997.  
 Aurora Article, CBOT, circa 1989\*.  
 One Click Trading Options, Trading Technologies, circa 1998.  
 Trading Screen, SWX Exchange, circa 1990\*.  
 Expanding futures and options trading around the world, around the clock, GLOBEX, circa 1989\*.  
 Hansell, The computer that ate Chicago, Institutional Investor, Feb. 1989\*.  
 Globex Report: An update on the CME Global electronic exchange, Feb. 10, 1989.  
 NYMEX Access Documents, New York Mercantile Exchange, Feb. 28, 1992.  
 Grummer, Peake, Sellers, Preliminary Feasibility Study, Bermudex Ltd., Nov. 1980.  
 Peake, Mendellson, The ABCs of trading on a national market system, Appendix C of Preliminary Feasibility Study, Bermudex Ltd., Sep. 1997.  
 Peake, The last 15 meters, Appendix E of Preliminary Feasibility Study, Bermudex Ltd., Jun. 15, 1997.  
 Declaration of Brendan Bradley in Case No. 04 C 5312, Nov. 18, 2004.  
 Memorandum Opinion Published Feb. 9, 2005, of Judge James B. Moran in Case No. 04 C 5312.  
 CATS Traders' Manual, Toronto Stock Exchange, Sep. 30, 1977.  
 Market Watch, Trading Screen, date not available.  
 Kharouf, Jim and Carla Cavaletti: "A Trading Room With a View"; Futures; Nov. 1998; 6 pages, [www.futuresmag.com](http://www.futuresmag.com).  
 Presentation regarding the NASDAQ Stock Market, Inc.; dated Nov. 8, 2001; 15 pages.

\* cited by examiner

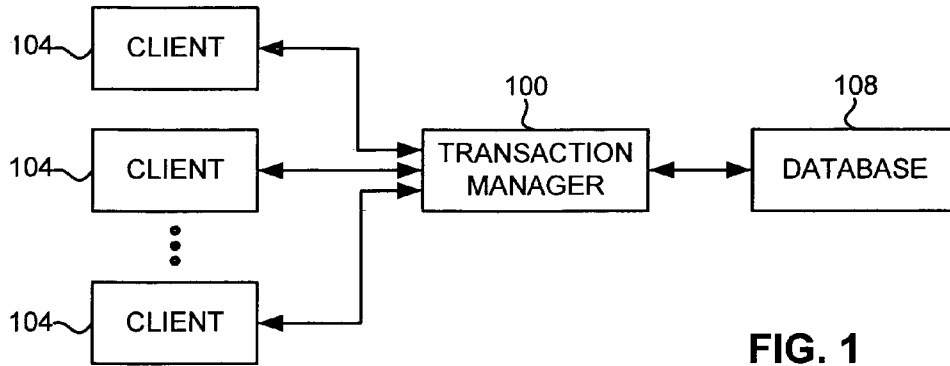


FIG. 1

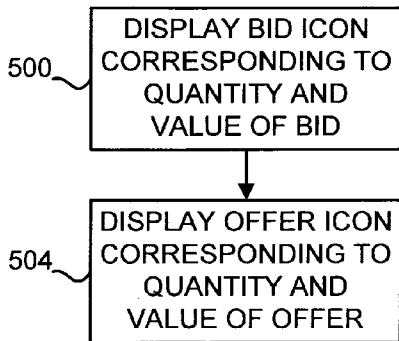


FIG. 5

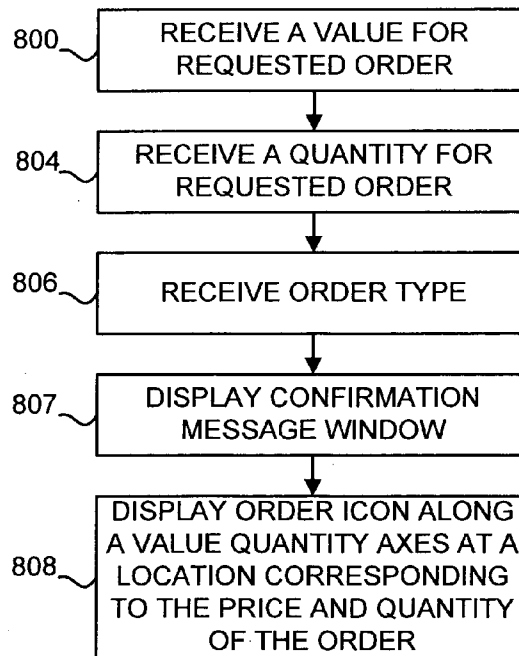


FIG. 8

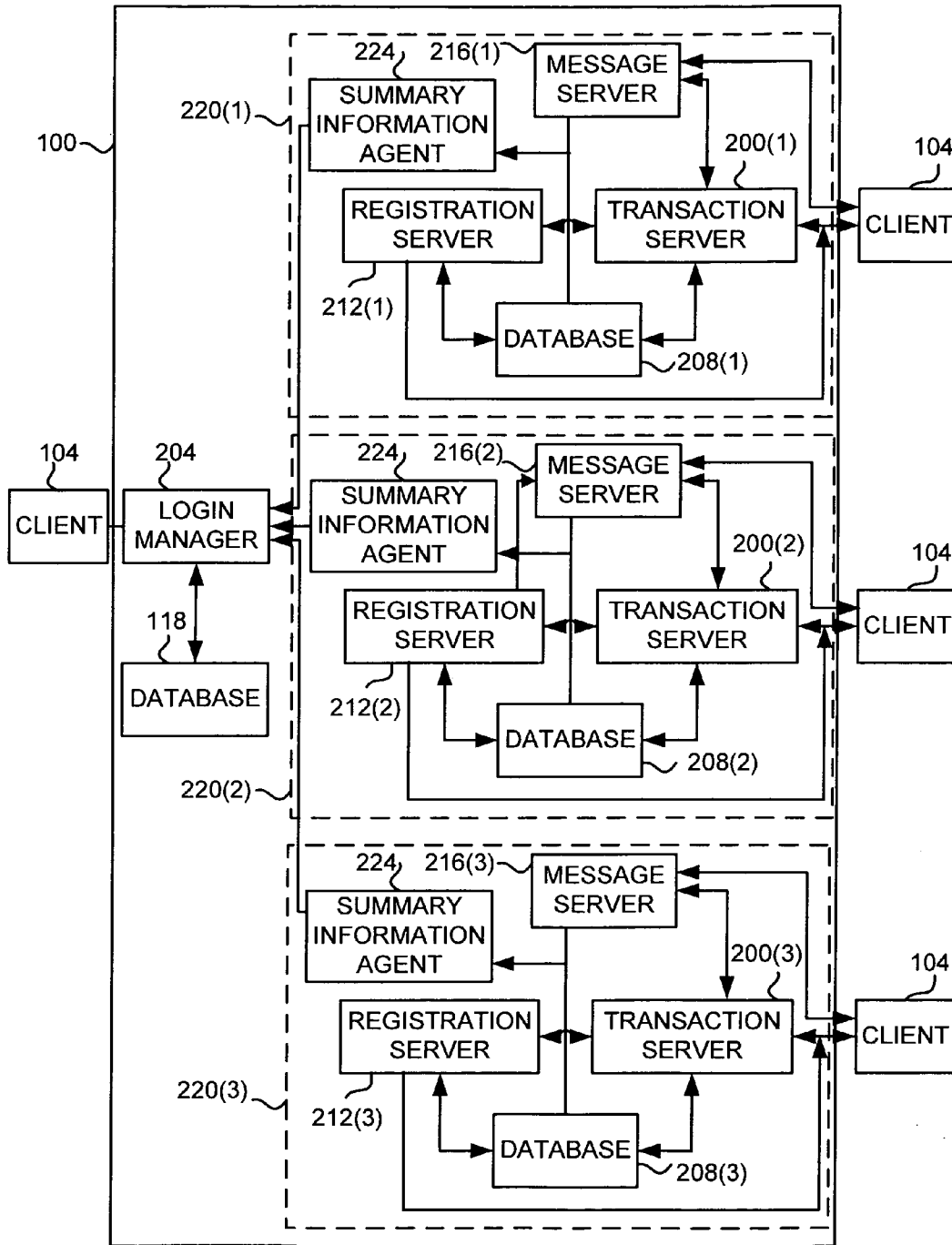


FIG. 2

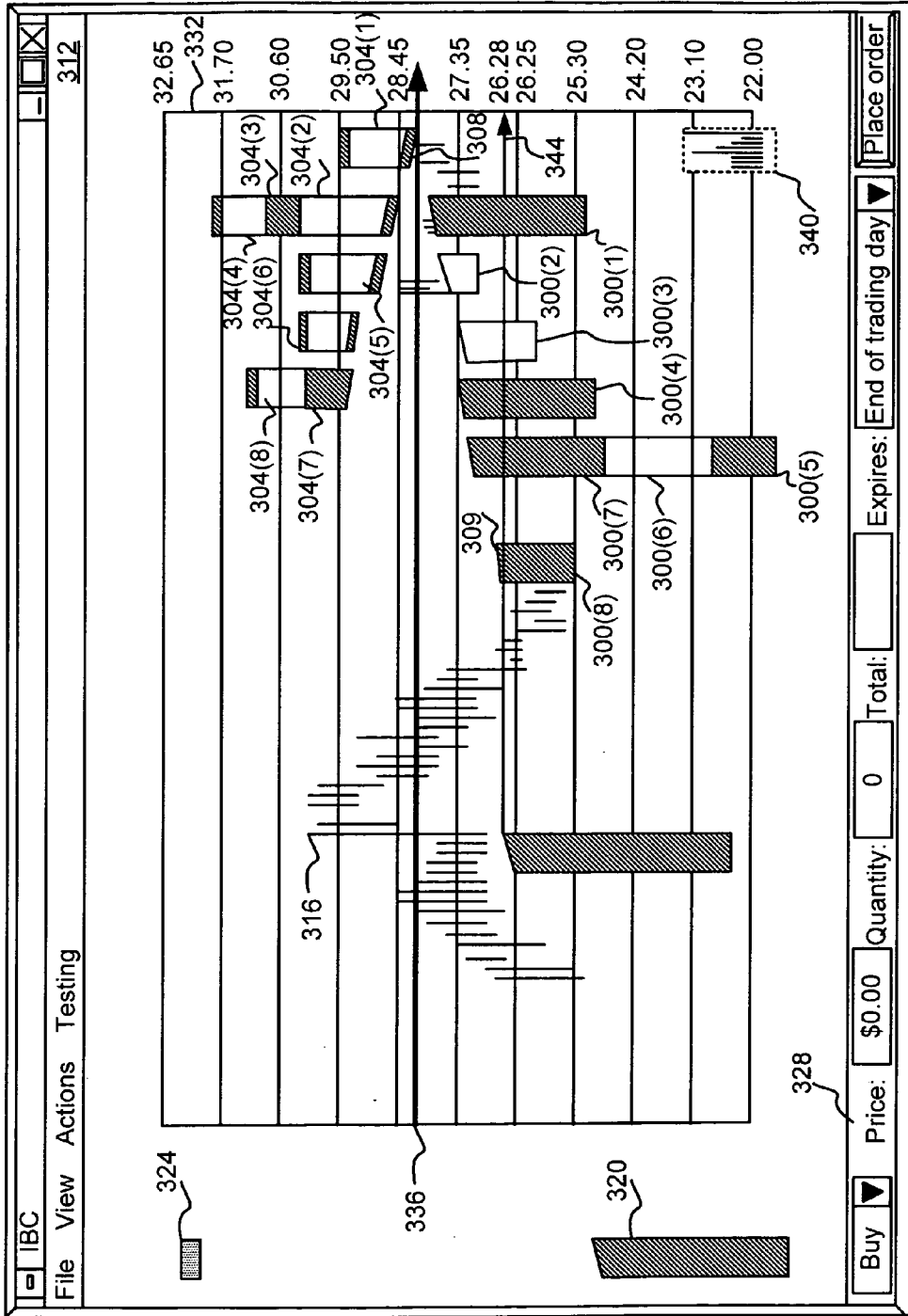


FIG. 3A

# Explore Litigation Insights

Docket Alarm provides insights to develop a more informed litigation strategy and the peace of mind of knowing you're on top of things.

## Real-Time Litigation Alerts



Keep your litigation team up-to-date with **real-time alerts** and advanced team management tools built for the enterprise, all while greatly reducing PACER spend.

Our comprehensive service means we can handle Federal, State, and Administrative courts across the country.

## Advanced Docket Research



With over 230 million records, Docket Alarm's cloud-native docket research platform finds what other services can't. Coverage includes Federal, State, plus PTAB, TTAB, ITC and NLRB decisions, all in one place.

Identify arguments that have been successful in the past with full text, pinpoint searching. Link to case law cited within any court document via Fastcase.

## Analytics At Your Fingertips



Learn what happened the last time a particular judge, opposing counsel or company faced cases similar to yours.

Advanced out-of-the-box PTAB and TTAB analytics are always at your fingertips.

## API

Docket Alarm offers a powerful API (application programming interface) to developers that want to integrate case filings into their apps.

## LAW FIRMS

Build custom dashboards for your attorneys and clients with live data direct from the court.

Automate many repetitive legal tasks like conflict checks, document management, and marketing.

## FINANCIAL INSTITUTIONS

Litigation and bankruptcy checks for companies and debtors.

## E-DISCOVERY AND LEGAL VENDORS

Sync your system to PACER to automate legal marketing.