



US006918082B1

(12) **United States Patent**  
**Gross et al.**

(10) **Patent No.:** **US 6,918,082 B1**  
(45) **Date of Patent:** **Jul. 12, 2005**

(54) **ELECTRONIC DOCUMENT PROOFING SYSTEM**

(75) Inventors: **Jeffrey M. Gross**, 212 Union St., Brooklyn, NY (US) 11231; **Matthew H. Parker**, Brooklyn, NY (US)

(73) Assignee: **Jeffrey M. Gross**, Brooklyn, NY (US)

(\*) Notice: Subject to any disclaimer, the term of this patent is extended or adjusted under 35 U.S.C. 154(b) by 696 days.

(21) Appl. No.: **09/215,593**

(22) Filed: **Dec. 17, 1998**

(51) **Int. Cl.**<sup>7</sup> ..... **G06F 15/00**

(52) **U.S. Cl.** ..... **715/511; 715/530**

(58) **Field of Search** ..... **707/511, 530; 715/511, 530**

(56) **References Cited**

**U.S. PATENT DOCUMENTS**

5,008,853 A *	4/1991	Bly et al.	345/751
5,220,657 A *	6/1993	Bly et al.	711/152
5,438,661 A *	8/1995	Ogawa	345/804
5,790,790 A *	8/1998	Smith et al.	709/206
6,065,026 A *	5/2000	Cornelia et al.	707/511
6,088,702 A *	7/2000	Plantz et al.	345/733
6,301,592 B1 *	10/2001	Aoyama et al.	707/511
6,349,287 B1 *	2/2002	Hayashi	707/511

**OTHER PUBLICATIONS**

Ivan Anthony Walsh, Adobe Acrobat 3.0, Adobe Acrobat Review, <http://www.desktoppublishing.com/reviews/acrobat-1.html>, 1993.\*  
Tubleweed Software (Web Page) POSTA by Tumbleweed Software, Aug. 17, 1998.

\* cited by examiner

*Primary Examiner*—Joseph Feild

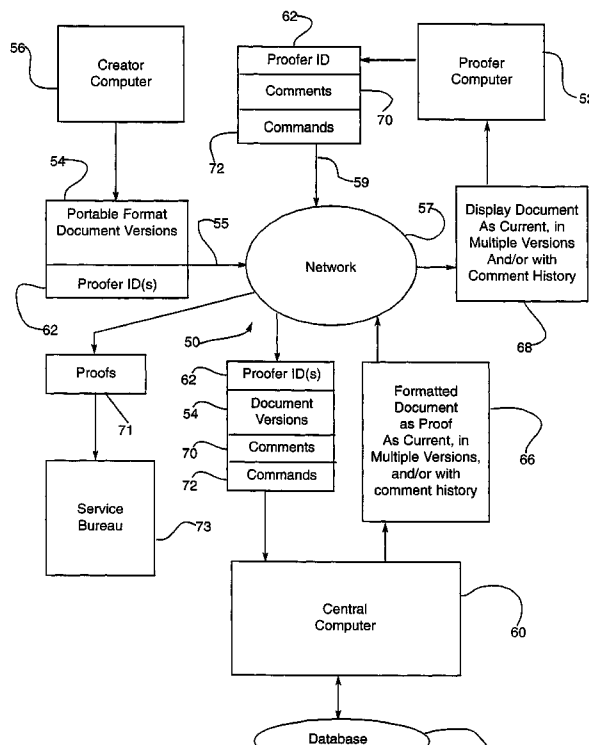
*Assistant Examiner*—R Singh

(74) *Attorney, Agent, or Firm*—St. Onge Steward Johnston & Reens LLC

(57) **ABSTRACT**

A system is provided for proofing electronic documents delivered over a network. The system comprises a plurality of electronic documents in portable document file format, a computer connectable to the network for receiving the plurality of portable format documents together with at least one associated proofer identifier, a program executing on the computer for assigning a version number to each of the plurality of received portable format documents, and a database accessible by the computer for storing the documents and associated version numbers. The computer for receiving a request, from a proofer presenting the proofer identifier, to review a portable format electronic document, and the program for retrieving and formatting the requested document for display.

**21 Claims, 4 Drawing Sheets**



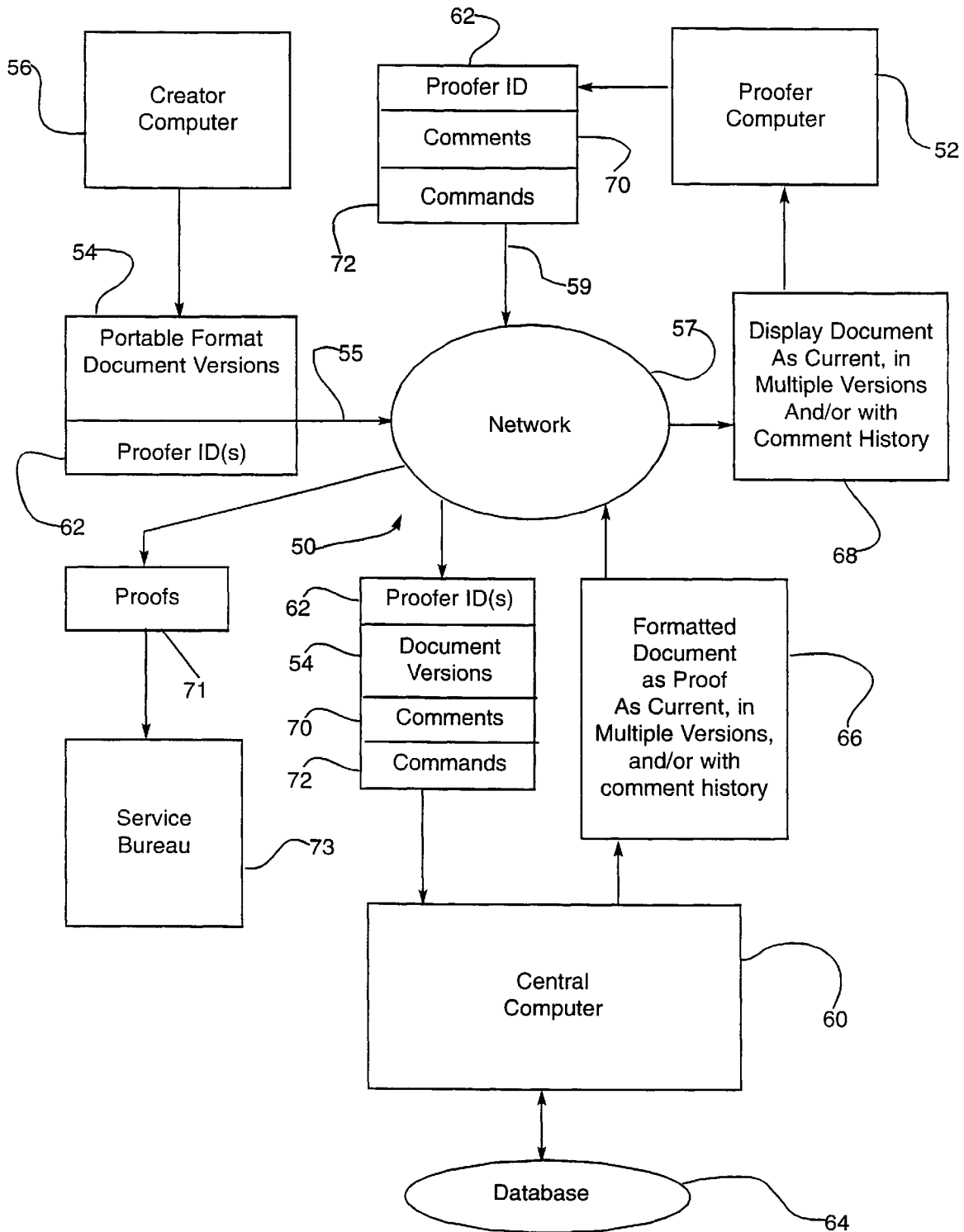


FIGURE 1

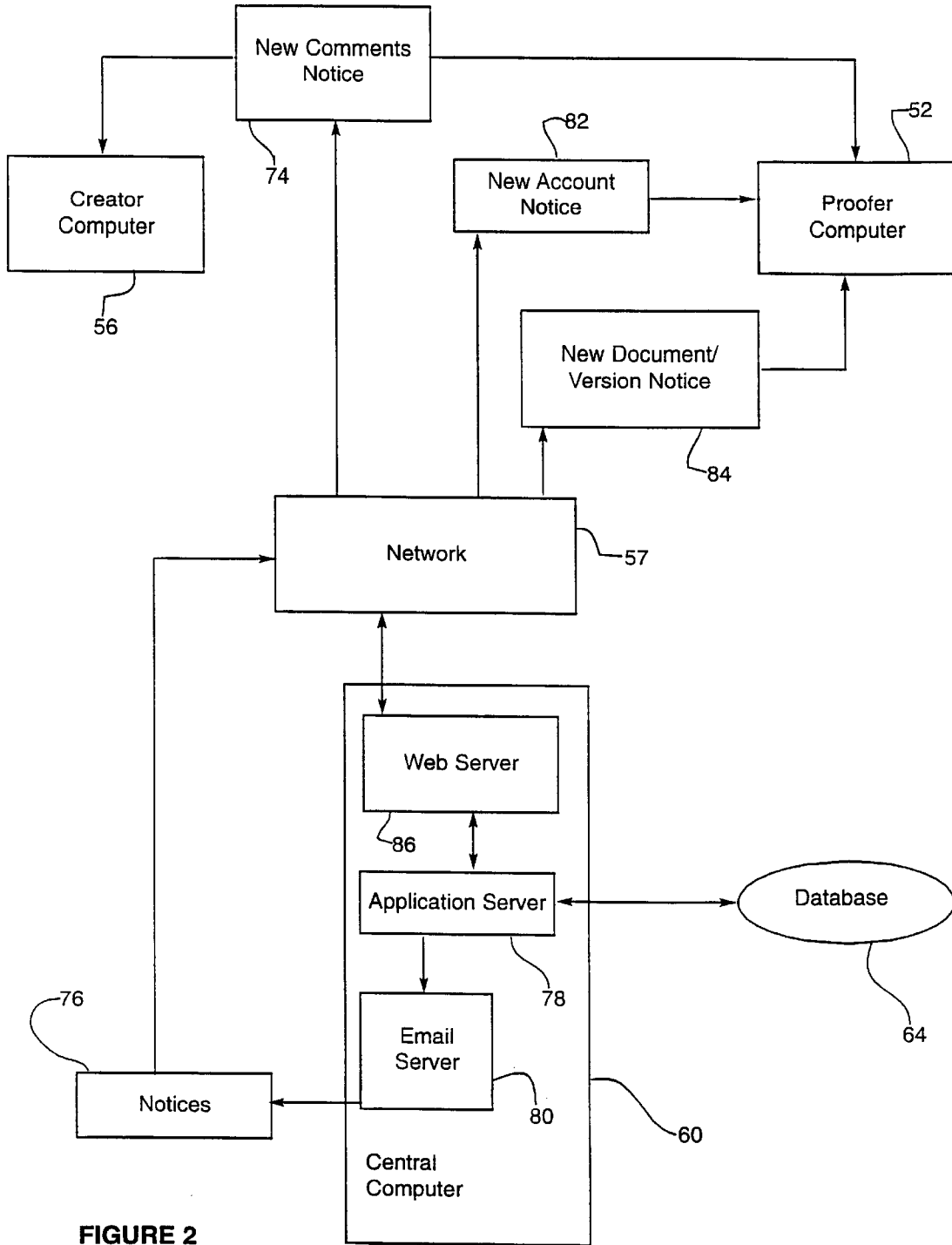


FIGURE 2

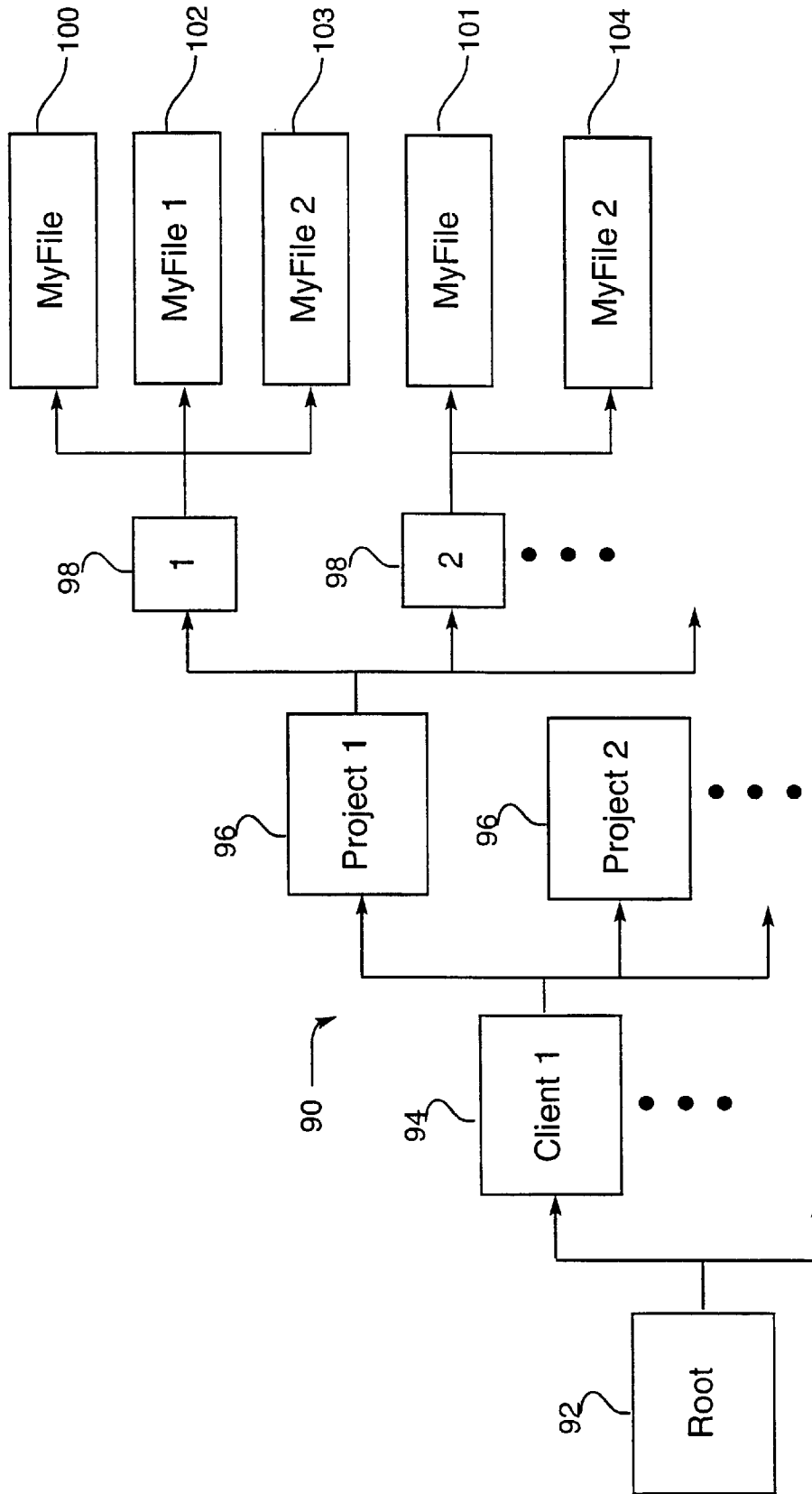


Figure 3

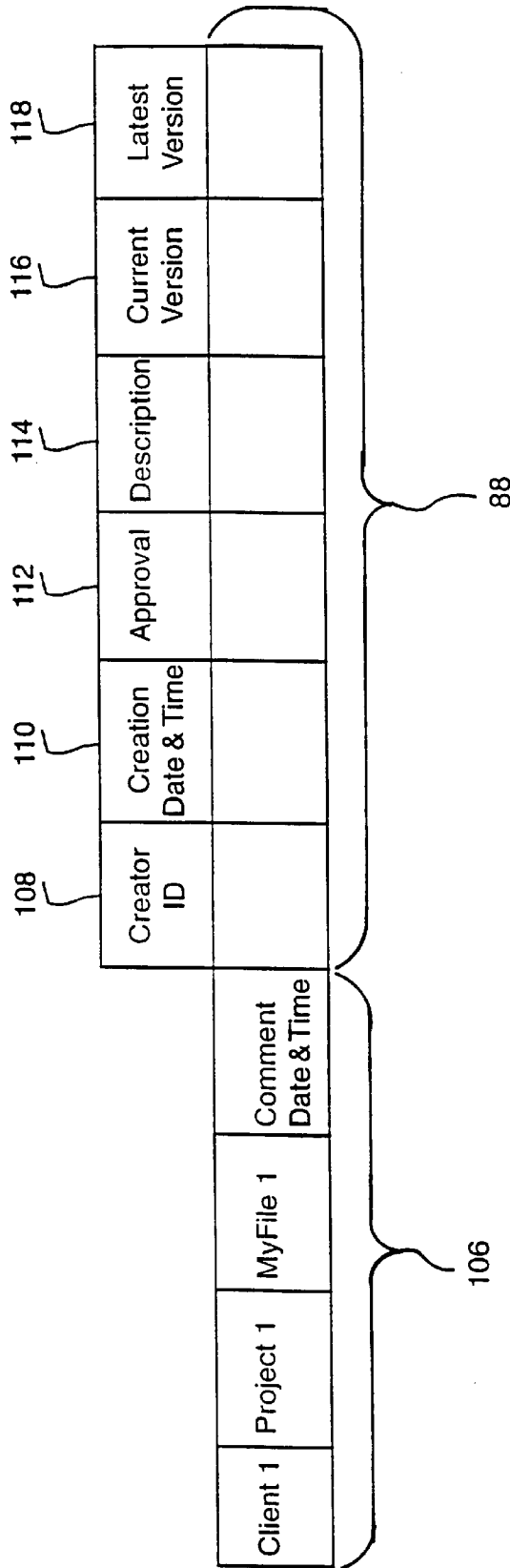


FIGURE 4

# Explore Litigation Insights

Docket Alarm provides insights to develop a more informed litigation strategy and the peace of mind of knowing you're on top of things.

## Real-Time Litigation Alerts



Keep your litigation team up-to-date with **real-time alerts** and advanced team management tools built for the enterprise, all while greatly reducing PACER spend.

Our comprehensive service means we can handle Federal, State, and Administrative courts across the country.

## Advanced Docket Research



With over 230 million records, Docket Alarm's cloud-native docket research platform finds what other services can't. Coverage includes Federal, State, plus PTAB, TTAB, ITC and NLRB decisions, all in one place.

Identify arguments that have been successful in the past with full text, pinpoint searching. Link to case law cited within any court document via Fastcase.

## Analytics At Your Fingertips



Learn what happened the last time a particular judge, opposing counsel or company faced cases similar to yours.

Advanced out-of-the-box PTAB and TTAB analytics are always at your fingertips.

## API

Docket Alarm offers a powerful API (application programming interface) to developers that want to integrate case filings into their apps.

## LAW FIRMS

Build custom dashboards for your attorneys and clients with live data direct from the court.

Automate many repetitive legal tasks like conflict checks, document management, and marketing.

## FINANCIAL INSTITUTIONS

Litigation and bankruptcy checks for companies and debtors.

## E-DISCOVERY AND LEGAL VENDORS

Sync your system to PACER to automate legal marketing.