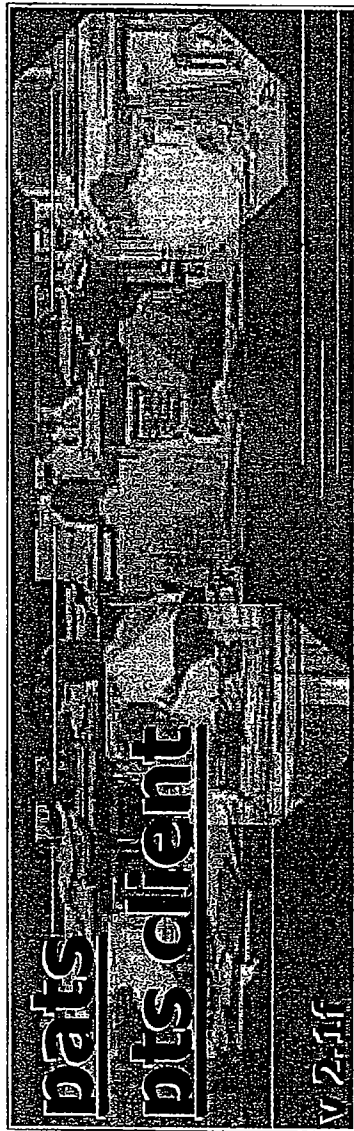


EXHIBIT  
Garrow 119  
5-26-05 MB



PAT Systems Ltd  
22 Shand Street,  
London SE1 2ES

[www.patsystems.com](http://www.patsystems.com)

PATS 00067

Pa	Wtd	Ind	Grav	Pa	Wtd	Ind	Grav	Pa	Wtd	Ind	Grav	Pa	Wtd	Ind	Grav
EURX	124	000	000	EURX	124	000	000	EURX	124	000	000	EURX	124	000	000
EURX	124	000	000	EURX	124	000	000	EURX	124	000	000	EURX	124	000	000
EURX	124	000	000	EURX	124	000	000	EURX	124	000	000	EURX	124	000	000
EURX	124	000	000	EURX	124	000	000	EURX	124	000	000	EURX	124	000	000
EURX	124	000	000	EURX	124	000	000	EURX	124	000	000	EURX	124	000	000

## USEFUL NUMBERS:

**TRADER SUPPORT: 0171 940 046**

**TECHNICAL SUPPORT: 0171 940 22**

PATS 00068

**PAT Client**

Contract: **Eurex \ EuroBONL \ MAR00** Bid: 102.95 Offer: 102.96 Last: 102.96  
 Size: 27 93 61

Eurex \ SCHATZ \ MAR00 Bid: 102.47 Offer: 102.48 Last: 102.46  
 Size: 107 403 100

Eurex \ EuroBUND \ MAR00 Bid: 103.11 Offer: 103.12 Last: 103.11  
 Size: 19 5 62

Liffe \ EBTP \ MAR00 Bid: 102.00 Offer: 102.26 Last: 102.22  
 Size: 5 30 48

Liffe \ EURBOR.1 \ MAR00 Bid: 96.335 Offer: 96.340 Last: 96.340  
 Size: 377 321 20

Liffe \ EURBOR.1 \ JUN00 Bid: 95.940 Offer: 95.946 Last: 95.940  
 Size: 119 345 10

Liffe \ EURBOR.1 \ SEP00 Bid: 95.660 Offer: 95.665 Last: 95.660  
 Size: 184 157 4

Liffe \ EURBOR.1 \ DEC00 Bid: 95.260 Offer: 95.265 Last: 95.265  
 Size: 198 1 4

Liffe \ FTSE100 \ MAR00 Bid: 6705.0 Offer: 6708.0 Last: 6705.0  
 Size: 4 2 1

Liffe \ JGB \ MAR00 Bid: 132.00 Offer: 132.05 Last: 132.00  
 Size: 7 1 2

Liffe \ LONGGILT \ MAR00 Bid: 109.76 Offer: 109.80 Last: 109.75  
 Size: 6 30 1

Liffe \ SHORTSTERL \ MAR00 Bid: 93.52 Offer: 93.53 Last: 93.53  
 Size: 732 24 42

Liffe \ SHORTSTERL \ JUN00 Bid: 93.13 Offer: 93.14 Last: 93.14  
 Size: 101 10 40

Merr \ BONO-10 \ MAR00 Bid: 8698 Offer: 8702 Last: 8699  
 Size: 10 35 1

Overall Bid: 0 Overall Offer: 0

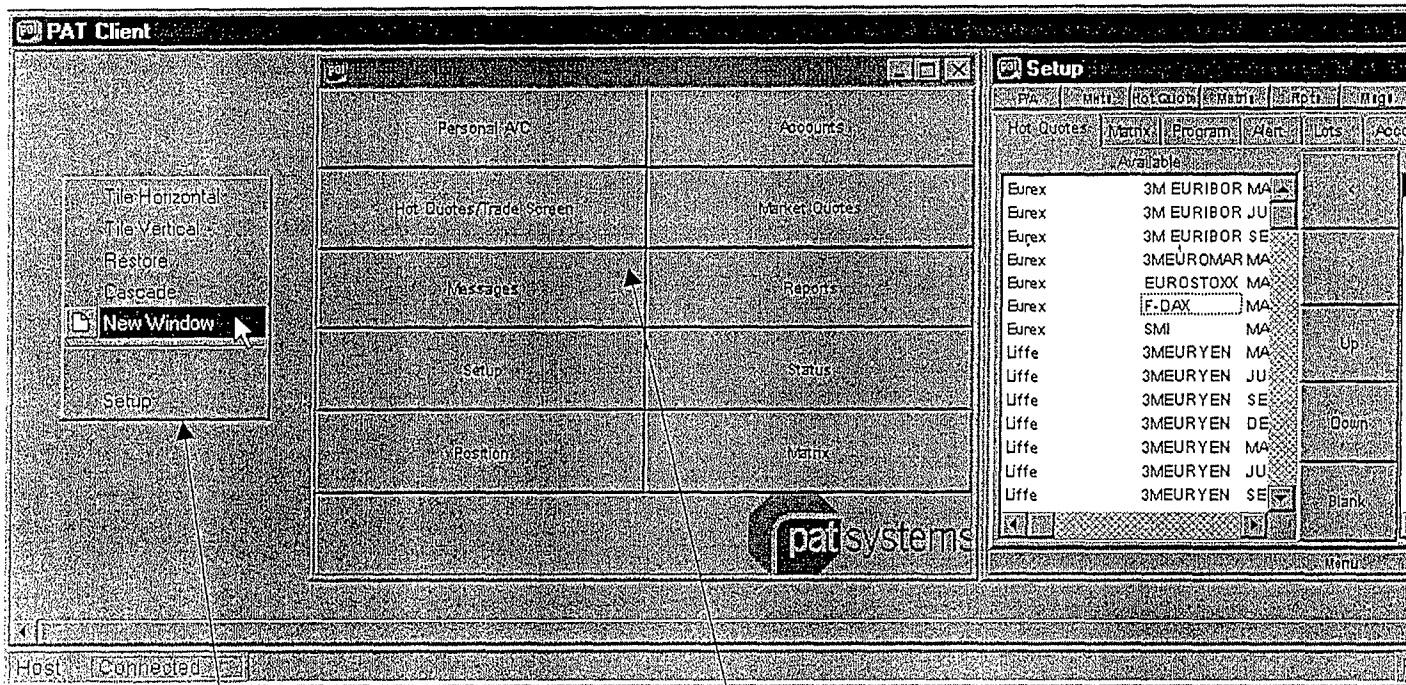
Contracts: **Eurex \ EuroBONL \ MAR00** Buys: 0 Sells: 0  
**Eurex \ EuroBUND \ MAR00** Buys: 0 Sells: 0  
**Eurex \ SCHATZ \ MAR00** Buys: 0 Sells: 0  
**Liffe \ EBTP \ MAR00** Buys: 0 Sells: 0  
**Liffe \ LONGGILT \ MAR00** Buys: 0 Sells: 0

DOM

Price	Size	Ac
109.70	8	8
109.74	20	28
109.72	1	29
109.71	5	34
109.70	1	35
109.69	3	38
109.68	6	43
109.66	5	48
109.65	1	49
109.63	2	51

PATS 00069

# Customising the layout



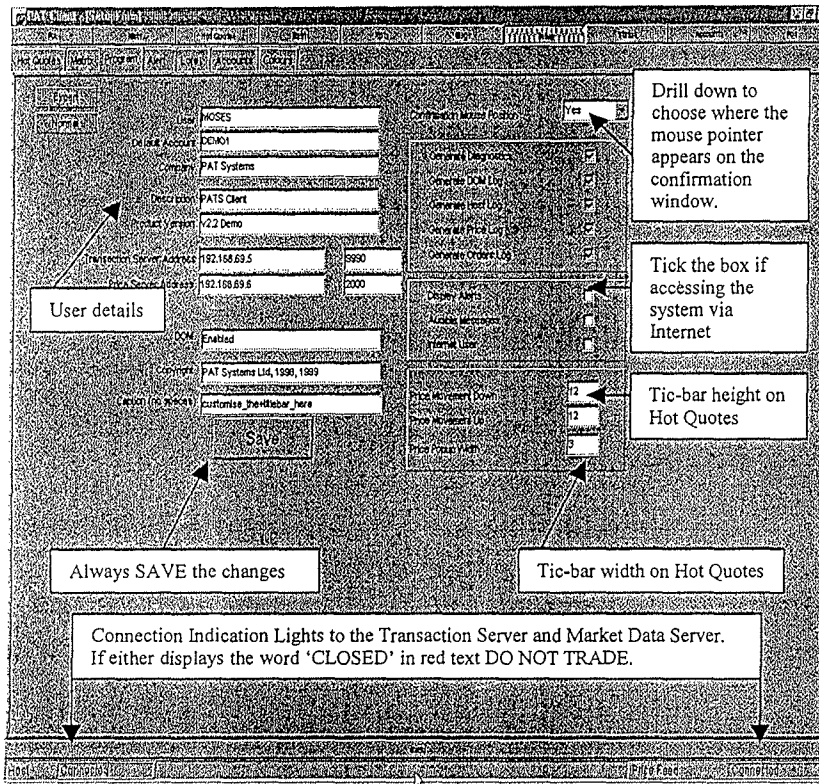
When first logging into the Client, the PATS (grey) desktop is displayed. To open trading windows on your PATS screen right click and select New Window.

This will open a PATS Menu where you may select which windows to open. To view Market prices open a HOT QUOTES window.

To select to trade/view the Hot Quotes contracts right click on the chosen contract and select the arrow button. To select to view the BLANK tab right click on the contract and select the BLANK tab. The BLANK tabs can appear

PATS 00070

# Customising the layout



*Remember:* All windows within the PATS are independent of each other and for colours, default trade quantities, and other settings must be made for each window windows will appear using the default settings necessary to SAVE any settings for them to have effect.

To maintain network efficiency and minimize work that the Client PC processor has to do, each window can subscribe to its own set of market data. For this reason you must select the contract type SET UP-HOT QUOTES so as to view key data on the P/A, MARKETS, HOT QUOTES and other screens. This also means that it is possible to have multiple Hot Quotes e.g. one per exchange and each of these Windows their own title bar caption.

It is possible to disable the confirmation window. You should consult your system administrator to doing this. The effect of this will be that as soon as a button is clicked, an order is entered-there is no opportunity to check the order details.

# Explore Litigation Insights

Docket Alarm provides insights to develop a more informed litigation strategy and the peace of mind of knowing you're on top of things.

## Real-Time Litigation Alerts



Keep your litigation team up-to-date with **real-time alerts** and advanced team management tools built for the enterprise, all while greatly reducing PACER spend.

Our comprehensive service means we can handle Federal, State, and Administrative courts across the country.

## Advanced Docket Research



With over 230 million records, Docket Alarm's cloud-native docket research platform finds what other services can't. Coverage includes Federal, State, plus PTAB, TTAB, ITC and NLRB decisions, all in one place.

Identify arguments that have been successful in the past with full text, pinpoint searching. Link to case law cited within any court document via Fastcase.

## Analytics At Your Fingertips



Learn what happened the last time a particular judge, opposing counsel or company faced cases similar to yours.

Advanced out-of-the-box PTAB and TTAB analytics are always at your fingertips.

## API

Docket Alarm offers a powerful API (application programming interface) to developers that want to integrate case filings into their apps.

## LAW FIRMS

Build custom dashboards for your attorneys and clients with live data direct from the court.

Automate many repetitive legal tasks like conflict checks, document management, and marketing.

## FINANCIAL INSTITUTIONS

Litigation and bankruptcy checks for companies and debtors.

## E-DISCOVERY AND LEGAL VENDORS

Sync your system to PACER to automate legal marketing.