



US006766304B2

(12) **United States Patent**
Kemp, II et al.

(10) **Patent No.:** **US 6,766,304 B2**
(45) **Date of Patent:** **Jul. 20, 2004**

(54) **CLICK BASED TRADING WITH INTUITIVE GRID DISPLAY OF MARKET DEPTH**

5,774,877 A 6/1998 Patterson, Jr. et al.
5,793,301 A 8/1998 Patterson, Jr. et al.

(75) Inventors: **Gary Allan Kemp, II**, Winnetka, IL (US); **Jens-Uwe Schluetter**, Evanston, IL (US); **Harris Brumfield**, Chicago, IL (US)

(List continued on next page.)

(73) Assignee: **Trading Technologies International, Inc.**, Chicago, IL (US)

FOREIGN PATENT DOCUMENTS

(*) Notice: Subject to any disclaimer, the term of this patent is extended or adjusted under 35 U.S.C. 154(b) by 544 days.

WO	WO 98/49639	11/1998
WO	WO 99/19821	4/1999
WO	WO 99/30259	6/1999
WO	WO 99/53424	10/1999
WO	WO 00/52619	9/2000
WO	WO 00/62187	10/2000
WO	WO 00/65510	11/2000
WO	WO 01/16830	3/2001
WO	WO 01/16852	3/2001
WO	WO 01/22315	3/2001
WO	WO 01/88808	11/2001

(21) Appl. No.: **09/894,637**

(22) Filed: **Jun. 27, 2001**

(65) **Prior Publication Data**

US 2002/0059129 A1 May 16, 2002

Related U.S. Application Data

(62) Division of application No. 09/590,692, filed on Jun. 9, 2000.

(60) Provisional application No. 60/186,322, filed on Mar. 2, 2000.

(51) **Int. Cl.**⁷ **G06F 17/60**

(52) **U.S. Cl.** **705/37; 705/36; 705/35**

(58) **Field of Search** **705/35, 36, 37; 345/814**

(56) **References Cited**

U.S. PATENT DOCUMENTS

4,674,044 A	6/1987	Kalmus et al.	364/408
4,750,135 A	6/1988	Boilen	364/514
5,038,284 A	8/1991	Kramer	
5,077,665 A	12/1991	Silverman et al.	364/408
5,136,501 A	8/1992	Silverman et al.	364/408
5,270,922 A	12/1993	Higgins	364/408
5,297,031 A	3/1994	Guterman et al.	
5,297,032 A	3/1994	Trojan et al.	
5,689,651 A	11/1997	Lozman	

OTHER PUBLICATIONS

Patsystems News Release, Patsystems Launches J Trader, Nov. 6, 2001.*

www.tradingtechnologies.com/products/xtrade_full.html (viewed May 22, 2001) <Jun. 9, 2000.

Kharouf, A trading room with a view, *Fututcs*, 27, 11—Nov. 1998.

USPTO Presentation, NASDAQ, Nov. 8, 2001, enclosed pp. 1–13.

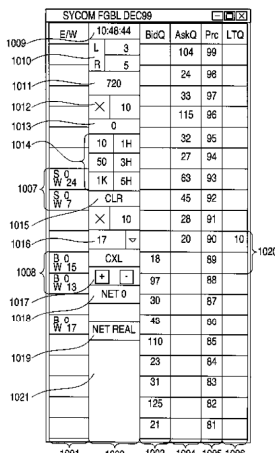
Primary Examiner—Richard Weisberger

(74) *Attorney, Agent, or Firm*—Foley & Lardner

(57) **ABSTRACT**

A method and system for reducing the time it takes for a trader to place a trade when electronically trading on an exchange, thus increasing the likelihood that the trader will have orders filled at desirable prices and quantities. The “Mercury” display and trading method of the present invention ensure fast and accurate execution of trades by displaying market depth on a vertical or horizontal plane, which fluctuates logically up or down, left or right across the plane as the market prices fluctuates. This allows the trader to trade quickly and efficiently.

40 Claims, 6 Drawing Sheets



US 6,766,304 B2

Page 2

U.S. PATENT DOCUMENTS

5,797,002 A	8/1998	Patterson, Jr. et al.	6,131,087 A	10/2000	Luke et al.
5,845,266 A	12/1998	Lupien et al.	6,134,535 A	10/2000	Belzberg
5,915,245 A	6/1999	Patterson, Jr. et al.	6,195,647 B1	2/2001	Martyn et al.
5,924,082 A	7/1999	Silverman et al.	6,272,474 B1	8/2001	Garcia
5,924,083 A	7/1999	Silverman et al. 705/37	6,278,982 B1	8/2001	Korhammer et al.
5,963,923 A	10/1999	Garber 705/37	6,282,521 B1	8/2001	Howorka
6,012,046 A	1/2000	Lupien et al.	6,408,282 B1	6/2002	Buist
6,014,643 A	1/2000	Minton 705/37	2002/0023038 A1	2/2002	Fritsch et al.
6,098,051 A	8/2000	Lupien et al.	2002/0055899 A1	5/2002	Williams

* cited by examiner

FIG. 1

CONNECTION TO MULTIPLE EXCHANGES

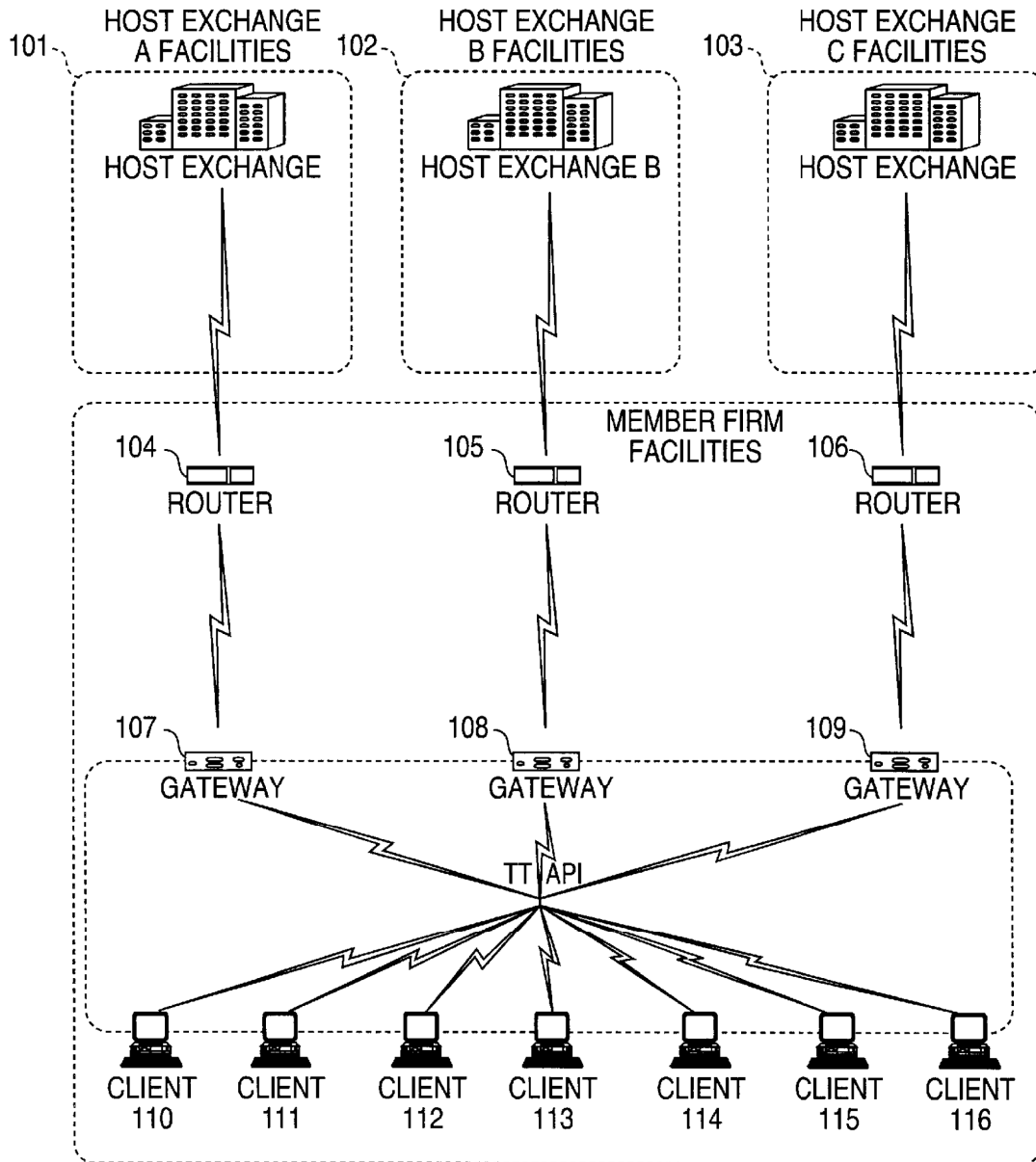


FIG. 2

201 202 203 204 205

	Contract	Depth	BidQty	BidPrc	AskPrc	AskQty	LastPrc	LastQty	Total
1	CDHO	•	785	7626	7627	21	7627	489	8230
2			626	7625	7629	815			
3			500	7624	7630	600			
4			500	7623	7631	2456			
5			200	7622	7632	800			

FIG. 3

SYCOM FGBL DEC99						<input type="checkbox"/>	<input type="checkbox"/>	<input type="checkbox"/>	<input type="checkbox"/>
E/W	10:48:44		BidQ	AskQ	Prc	LTQ			
1009	L	3		104	99				
1010	R	5		24	98				
1011	720			33	97				
1012	×	10		115	96				
1013	0			32	95				
1014	10	1H		27	94				
	50	3H		63	93				
1007	S 0 W 24	1K 5H		45	92				
	S 0 W 7	CLR		28	91				
1015	×	10		20	90	10	1020		
1016	17	▽		18	89				
1008	B 0 W 15	CXL	18		89				
	B 0 W 13	+ -	97		88				
1017		NET 0	30		87				
1018	B 0 W 17	NET REAL	43		86				
1019			110		85				
			23		84				
			31		83				
1021			125		82				
			21		81				

FIG. 4

SYCOM FGBL DEC99						[-] [] [X]	
E/W	10:48:44		BidQ	AskQ	Prc	LTQ	
	L	3		104	99		
	R	5		24	98		
	720			33	97		
	X	10		115	96		
	0						
	10	1H		32	95		
	50	3H		27	94		
S 10 W 14	1K	5H		63	93	10	} 1101
	CLR		43		92		
	X	10	125		91		
	17	▼	97		90		
B 0 W 15	CXL		18		89		
B 0 W 13	+	-	97		88		
	NET 0		30		87		
B 0 W 17	NET REAL		43		86		
			110		85		
			23		84		
			31		83		
			125		82		
			21		81		

FIG. 5

SYCOM FGBL DEC99						<input type="checkbox"/>	<input type="checkbox"/>	<input type="checkbox"/>	<input type="checkbox"/>
E/W	10:48:44		BidQ	AskQ	Prc	LTQ			
	L	3		104	99				
	R	5		24	98				
	720			33	97				
	×	10		115	96				
	0			32	95				
	10	1H		27	94				
	50	3H		63	93				
S 0 W 24	1K	5H		45	92				
S 0 W 7	CLR			28	91				
	×	10		20	90	10			
	17	▼		18	89				
B 0 W 15	CXL			97	88				
B 0 W 13	<input type="checkbox"/>	<input type="checkbox"/>		30	87				
	NET 0			43	86				
B 0 W 17	NET REAL			110	85				
				23	84				
				31	83				
				125	82				
				21	81				

1206

1205

1204

1208

1201

1202

1203

1207

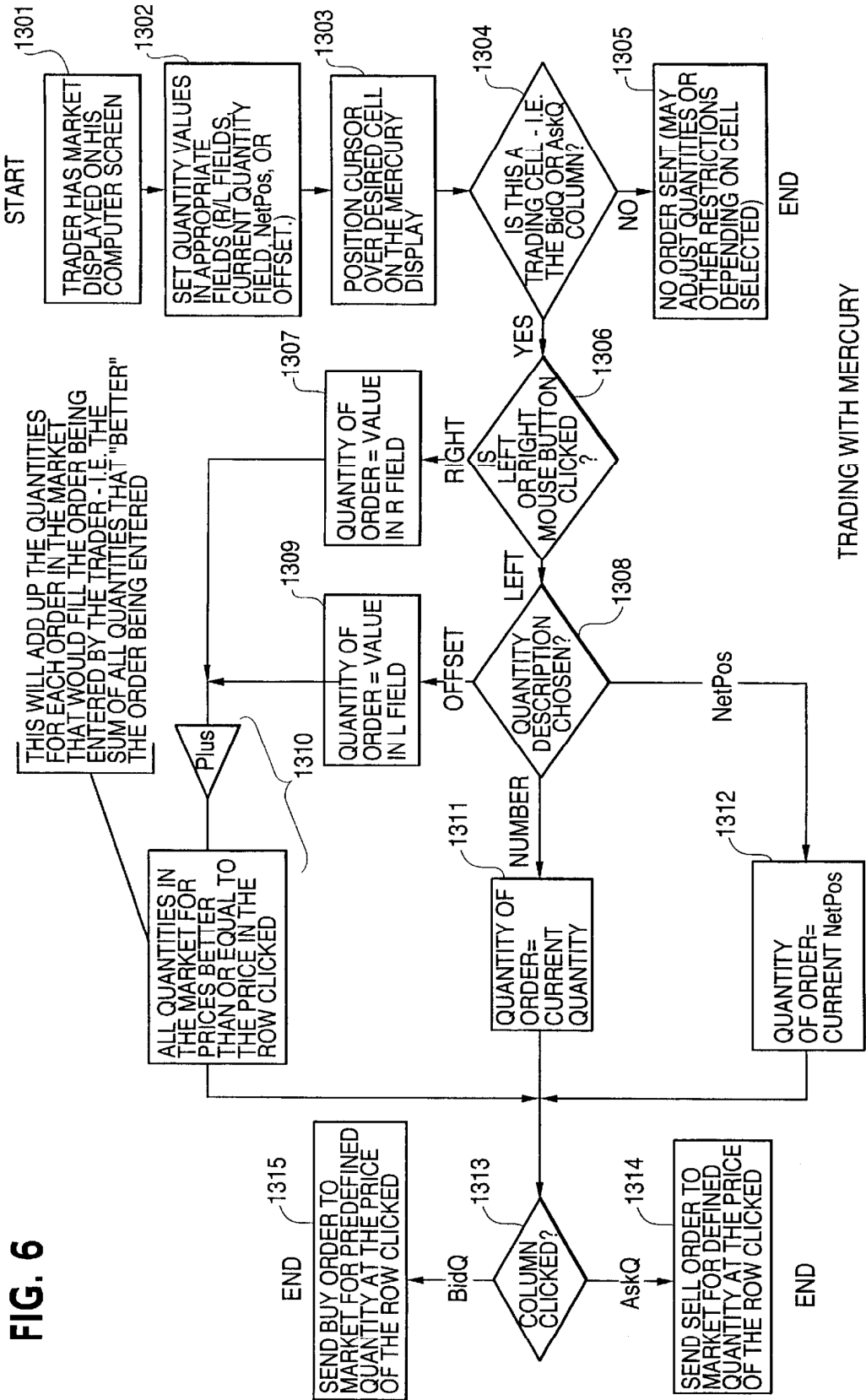


FIG. 6

1

CLICK BASED TRADING WITH INTUITIVE GRID DISPLAY OF MARKET DEPTH

This application is a divisional application of Ser. No. 09/590,692 filed Jun. 09, 2000 which claims benefit of 5 60/186,322, filed Mar. 2, 2000.

PRIORITY

The present application claims priority to a U.S. Provisional Patent Application entitled "Market Depth Display Click Based Trading and Mercury Display" filed Mar. 2, 2000, the contents of which are incorporated herein by reference. 10

FIELD OF INVENTION

The present invention is directed to the electronic trading of commodities. Specifically, the invention provides a trader with a versatile and efficient tool for executing trades. It facilitates the display of and the rapid placement of trade orders within the market trading depth of a commodity, where a commodity includes anything that can be traded with quantities and/or prices. 15 20

BACKGROUND OF THE INVENTION

At least 60 exchanges throughout the world utilize electronic trading in varying degrees to trade stocks, bonds, futures, options and other products. These electronic exchanges are based on three components: mainframe computers (host), communications servers, and the exchange participants' computers (client). The host forms the electronic heart of the fully computerized electronic trading system. The system's operations cover order-matching, maintaining order books and positions, price information, and managing and updating the database for the online trading day as well as nightly batch runs. The host is also equipped with external interfaces that maintain uninterrupted online contact to quote vendors and other price information systems. 25 30 35

Traders can link to the host through three types of structures: high speed data lines, high speed communications servers and the Internet. High speed data lines establish direct connections between the client and the host. Another connection can be established by configuring high speed networks or communications servers at strategic access points worldwide in locations where traders physically are located. Data is transmitted in both directions between traders and exchanges via dedicated high speed communication lines. Most exchange participants install two lines between the exchange and the client site or between the communication server and the client site as a safety measure against potential failures. An exchange's internal computer system is also often installed with backups as a redundant measure to secure system availability. The third connection utilizes the Internet. Here, the exchange and the traders communicate back and forth through high speed data lines, which are connected to the Internet. This allows traders to be located anywhere they can establish a connection to the Internet. 40 45 50 55

Irrespective of the way in which a connection is established, the exchange participants' computers allow traders to participate in the market. They use software that creates specialized interactive trading screens on the traders' desktops. The trading screens enable traders to enter and execute orders, obtain market quotes, and monitor positions. The range and quality of features available to traders on their 60 65

2

screens varies according to the specific software application being run. The installation of open interfaces in the development of an exchange's electronic strategy means users can choose, depending on their trading style and internal requirements, the means by which they will access the exchange.

The world's stock, bond, futures and options exchanges have volatile products with prices that move rapidly. To profit in these markets, traders must be able to react quickly. A skilled trader with the quickest software, the fastest communications, and the most sophisticated analytics can significantly improve his own or his firm's bottom line. The slightest speed advantage can generate significant returns in a fast moving market. In today's securities markets, a trader lacking a technologically advanced interface is at a severe competitive disadvantage. 15

Irrespective of what interface a trader uses to enter orders in the market, each market supplies and requires the same information to and from every trader. The bids and asks in the market make up the market data and everyone logged on to trade can receive this information if the exchange provides it. Similarly, every exchange requires that certain information be included in each order. For example, traders must supply information like the name of the commodity, quantity, restrictions, price and multiple other variables. Without all of this information, the market will not accept the order. This input and output of information the same for every trader. 20 25

With these variables being constant, a competitive speed advantage must come from other aspects of the trading cycle. When analyzing the time it takes to place a trade order for a given commodity, various steps contribute in different amounts to the total time required. Approximately 8% of the total time it takes to enter an order elapses between the moment the host generates the price for the commodity and the moment the client receives the price. The time it takes for the client application to display the price to the trader amounts to approximately 4%. The time it takes for a trade order to be transmitted to the host amounts to approximately 8%. The remainder of the total time it takes to place an order, approximately 80%, is attributable to the time required for the trader to read the prices displayed and to enter a trade order. The present invention provides a significant advantage during the slowest portion of the trading cycle—while the trader manually enters his order. Traders recognize that the value of time savings in this portion may amount to millions of dollars annually. 30 35 40 45

In existing systems, multiple elements of an order must be entered prior to an order being sent to market, which is time consuming for the trader. Such elements include the commodity symbol, the desired price, the quantity and whether a buy or a sell order is desired. The more time a trader takes entering an order, the more likely the price on which he wanted to bid or offer will change or not be available in the market. The market is fluid as many traders are sending orders to the market simultaneously. In fact, successful markets strive to have such a high volume of trading that any trader who wishes to enter an order will find a match and have the order filled quickly, if not immediately. In such liquid markets, the prices of the commodities fluctuate rapidly. On a trading screen, this results in rapid changes in the price and quantity fields within the market grid. If a trader intends to enter an order at a particular price, but misses the price because the market prices moved before he could enter the order, he may lose hundreds, thousands, even millions of dollars. The faster a trader can trade, the less likely it will be that he will miss his price and the more likely he will make money. 50 55 60 65

SUMMARY OF THE INVENTION

The inventors have developed the present invention which overcomes the drawbacks of the existing trading systems and dramatically reduces the time it takes for a trader to place a trade when electronically trading on an exchange. This, in turn, increases the likelihood that the trader will have orders filled at desirable prices and quantities.

The "Mercury" display and trading method of the present invention ensure fast and accurate execution of trades by displaying market depth on a vertical or horizontal plane, which fluctuates logically up or down, left or right across the plane as the market prices fluctuates. This allows the trader to trade quickly and efficiently.

Specifically, the present invention is directed to a graphical user interface for displaying the market depth of a commodity traded in a market, including a dynamic display for a plurality of bids and for a plurality of asks in the market for the commodity and a static display of prices corresponding to the plurality of bids and asks. In this embodiment the pluralities of bids and asks are dynamically displayed in alignment with the prices corresponding thereto. Also described herein is a method and system for placing trade orders using such displays.

These embodiments, and others described in greater detail herein, provide the trader with improved efficiency and versatility in placing, and thus executing, trade orders for commodities in an electronic exchange. Other features and advantages of the present invention will become apparent to those skilled in the art from the following detailed description. It should be understood, however, that the detailed description and specific examples, while indicating preferred embodiments of the present invention, are given by way of illustration and not limitation. Many changes and modifications within the scope of the present invention may be made without departing from the spirit thereof, and the invention includes all such modifications.

BRIEF DESCRIPTION OF THE DRAWINGS

FIG. 1 illustrates the network connections between multiple exchanges and client sites;

FIG. 2 illustrates screen display showing the inside market and the market depth of a given commodity being traded;

FIG. 3 illustrates the Mercury display of the present invention;

FIG. 4 illustrates the Mercury display at a later time showing the movement of values when compared to FIG. 3;

FIG. 5 illustrates a Mercury display with parameters set in order to exemplify the Mercury trading method; and

FIG. 6 is a flowchart illustrating the process for Mercury display and trading.

DETAILED DESCRIPTION OF THE PREFERRED EMBODIMENTS

As described with reference to the accompanying figures, the present invention provides a display and trading method to ensure fast and accurate execution of trades by displaying market depth on a vertical or horizontal plane, which fluctuates logically up or down, left or right across the plane as the market prices fluctuates. This allows the trader to place trade orders quickly and efficiently. A commodity's market depth is the current bid and ask prices and quantities in the market. The display and trading method of the invention increase the likelihood that the trader will be able to execute orders at desirable prices and quantities.

In the preferred embodiment, the present invention is implemented on a computer or electronic terminal. The computer is able to communicate either directly or indirectly (using intermediate devices) with the exchange to receive and transmit market, commodity, and trading order information. It is able to interact with the trader and to generate contents and characteristics of a trade order to be sent to the exchange. It is envisioned that the system of the present invention can be implemented on any existing or future terminal or device with the processing capability to perform the functions described herein. The scope of the present invention is not limited by the type of terminal or device used. Further, the specification refers to a single click of a mouse as a means for user input and interaction with the terminal display as an example of a single action of the user. While this describes a preferred mode of interaction, the scope of the present invention is not limited to the use of a mouse as the input device or to the click of a mouse button as the user's single action. Rather, any action by a user within a short period of time, whether comprising one or more clicks of a mouse button or other input device, is considered a single action of the user for the purposes of the present invention.

The system can be configured to allow for trading in a single or in multiple exchanges simultaneously. Connection of the system of the present invention with multiple exchanges is illustrated in FIG. 1. This figure shows multiple host exchanges **101-103** connected through routers **104-106** to gateways **107-109**. Multiple client terminals **110-116** for use as trading stations can then trade in the multiple exchanges through their connection to the gateways **107-109**. When the system is configured to receive data from multiple exchanges, then the preferred implementation is to translate the data from various exchanges into a simple format. This "translation" function is described below with reference to FIG. 1. An applications program interface ("TT API" as depicted in the figure) translates the incoming data formats from the different exchanges to a simple preferred data format. This translation function may be disposed anywhere in the network, for example, at the gateway server, at the individual workstations or at both. In addition, the storage at gateway servers and at the client workstations, and/or other external storage cache historical data such as order books which list the client's active orders in the market; that is, those orders that have neither been filled nor cancelled. Information from different exchanges can be displayed at one or in multiple windows at the client workstation. Accordingly, while reference is made through the remainder of the specification to a single exchange to which a trading terminal is connected, the scope of the invention includes the ability to trade, in accordance with the trading methods described herein, in multiple exchanges using a single trading terminal.

The preferred embodiments of the present invention include the display of "Market Depth" and allow trader to view the market depth of a commodity and to execute trades within the market depth with a single click of a computer mouse button. Market Depth represents the order book with the current bid and ask prices and quantities in the market. In other words, Market Depth is each bid and ask that was entered into the market, subject to the limits noted below, in addition to the inside market. For a commodity being traded, the "inside market" is the highest bid price and the lowest ask price.

The exchange sends the price, order and fill information to each trader on the exchange. The present invention processes this information and maps it through simple

5

algorithms and mapping tables to positions in a theoretical grid program or any other comparable mapping technique for mapping data to a screen. The physical mapping of such information to a screen grid can be done by any technique known to those skilled in the art. The present invention is not limited by the method used to map the data to the screen display.

How far into the market depth the present invention can display depends on how much of the market depth the exchange provides. Some exchanges supply an infinite market depth, while others provide no market depth or only a few orders away from the inside market. The user of the present invention can also chose how far into the market depth to display on his screen. FIG. 2 illustrates a screen display of an invention described in a commonly owned co-pending application entitled "Click Based Trading with Market Depth Display" Ser. No. 09/589,751, filed on Jun. 9, 2000, the contents of which are incorporated herein by reference. This display shows the inside market and the market depth of a given commodity being traded. Row 1 represents the "inside market" for the commodity being traded which is the best (highest) bid price and quantity and the best (lowest) ask price and quantity. Rows 2-5 represent the "market depth" for the commodity being traded. In the preferred embodiment of the present invention, the display of market depth (rows 2-5) lists the available next-best bids, in column 203, and asks, in column 204. The working bid and ask quantity for each price level is also displayed in columns 202 and 205 respectively (inside market-row 1). Prices and quantities for the inside market and market depth update dynamically on a real time basis as such information is relayed from the market.

In the screen display shown in FIG. 2, the commodity (contract) being traded is represented in row 1 by the character string "CDHO". The Depth column 208 will inform the trader of a status by displaying different colors. Yellow indicates that the program application is waiting for data. Red indicates that the Market Depth has failed to

6

receive the data from the server and has "timed out." Green indicates that the data has just been updated. The other column headings in this and all of the other figures, are defined as follows. BidQty (Bid Quantity): the quantity for each working bid, BidPrc (Bid Price): the price for each working bid, AskPrc (Ask Price): the price for each working ask, AskQty (Ask Quantity): the quantity for each working ask, LastPrc (Last Price): the price for the last bid and ask that were matched in the market and LastQty (Last Quantity): the quantity added at the last price. Total represents the total quantity traded of the given commodity.

The configuration of the screen display itself informs the user in a more convenient and efficient manner than existing systems. Traders gain a significant advantage by seeing the market depth because they can see trends in the orders in the market. The market depth display shows the trader the interest the market has in a given commodity at different price levels. If a large amount of bids or asks are in the market near the trader's position, he may feel he should sell or buy before the inside market reaches the morass of orders. A lack of orders above or below the inside market might prompt a trader to enter orders near the inside market. Without seeing the market depth, no such strategies could be utilized. Having the dynamic market depth, including the bid and ask quantities and prices of a traded commodity aligned with and displayed below the current inside market of the commodity conveys the information to the user in a more intuitive and easily understandable manner. Trends in the trading of, the commodity and other relevant characteristics are more easily identifiable by the user through the use of the present invention.

Various abbreviations are used in the screen displays, and specifically, in the column headings of the screen displays reproduced herein. Some abbreviations have been discussed above. A list of common abbreviations and their meanings is provided in Table 1.

TABLE I

Abbreviations.			
COLUMN	DESCRIPTION	COLUMN	DESCRIPTION
Month	Expiration Month/Year	TheoBid	Theoretical Bid Price
Bid Mbr(1)	Bid Member ID	TheoAsk	Theoretical Ask Price
WrkBuys(2)	Working Buys for entire Group ID	Qact	Quote Action (Sends individual quotes)
BidQty	Bid Quantity	BQQ	Test Bid Quote Quantity
ThrshBid(6)	Threshold Bid Price	BQP	Test Bid Quote Price
BidPrc	Bid Price	Mkt BQQ	Market Bid Quote Quantity
Bid Qty Accum	Accumulated Bid Quantity	Mkt BQP	Market Bid Quote Price
BidPrc Avg	Bid Price Average	Quote	Checkbox activates/deactivates contract for quoting
AskPrc Avg	Ask Price Average	Mkt AQQ	Market Ask Quote Quantity
AskQty Accum	Accumulated Ask Quantity	Mkt AQP	Market Ask Quote Price
AskPrc	Ask Price	AQP	Ask Quote Price
ThrshAsk(6)	Threshold Ask Price	AQQ	Ask Quote Quantity
AskQty	Ask Quantity	Imp BidQty(5)	Implied Bid Quantity
WrkSells(2)	Working Sells for entire Group ID	Imp BidPrc(5)	Implied Bid Price
Ask Mbr(1)	Ask Member ID	Imp AskQty(5)	Implied Ask Quantity
NetPos	Net Position	Imp AskPrc(5)	Implied Ask Price
FFNetPos	Fast Fill Net Position	Gamma(3)	Change in Delta given 1 pt change in underlying
LastPrc	Last Price	Delta (3)	Change in price given 1 pt change in underlying
LastQty	Last Quantity	Vola (3)	Percent volatility
Total	Total Traded Quantity	Vega (3)	Price change given 1% change in Vola
High	High Price	Rhop (3)	Price change given 1% change in interest rate

TABLE I-continued

Abbreviations.			
COLUMN	DESCRIPTION	COLUMN	DESCRIPTION
Low	Low Price	Theta(3)	Price change for every day that elapses
Open	Opening Price	Click Trd	Activate/deactivate click trading by contract
Close	Closing Price	S (Status)	Auction, Closed, FastMkt, Not Tradable, Pre-trading, Tradable, S = post-trading
Chng TheoPrc	Last Price-Last Close Theoretical Price	Expiry	Expiration Month/Year

15

As described herein, the display and trading method of the present invention provide the user with certain advantages over systems in which a display of market depth, as shown in FIG. 2, is used. The Mercury display and trading method of the present invention ensure fast and accurate execution of trades by displaying market depth on a vertical or horizontal plane, which fluctuates logically up or down, left or right across the plane as the market prices fluctuates. This allows the trader to trade quickly and efficiently. An example of such a Mercury display is illustrated in the screen display of FIG. 3.

The display of market depth and the manner in which traders trade within the market depth can be effected in different manners, which many traders will find materially better, faster and more accurate. In addition, some traders may find the display of market depth to be difficult to follow. In the display shown in FIG. 2, the market depth is displayed vertically so that both Bid and Ask prices descend the grid. The Bid prices descend the market grid as the prices decrease. Ask prices also descend the market grid as these prices actually increase. This combination may be considered counterintuitive and difficult to follow by some traders.

The Mercury display overcomes this problem in an innovative and logical manner. Mercury also provides an order entry system, market grid, fill window and summary of market orders in one simple window. Such a condensed display materially simplifies the trading system by entering and tracking trades in an extremely efficient manner. Mercury displays market depth in a logical, vertical fashion or horizontally or at some other convenient angle or configuration. A vertical field is shown in the figures and described for convenience, but the field could be horizontal or at an angle. In turn, Mercury further increases the speed of trading and the likelihood of entering orders at desired prices with desired quantities. In the preferred embodiment of the invention, the Mercury display is a static vertical column of prices with the bid and ask quantities displayed in vertical columns to the side of the price column and aligned with the corresponding bid and ask prices. An example of this display is shown in FIG. 3.

Bid quantities are in the column 1003 labeled BidQ and ask quantities are in column 1004 labeled AskQ. The representative ticks from prices for the given commodity are shown in column 1005. The column, does not list the whole prices (e.g. 95.89), but rather, just the last two digits (e.g. 89). In the example shown, the inside market, cells 1020, is 18 (best bid quantity) at 89 (best bid price) and 20 (best ask quantity) at 90 (best ask price). In the preferred embodiment of the invention, these three columns are shown in different colors so that the trader can quickly distinguish between them.

The values in the price column are static; that is, they do not normally change positions unless a re-centering command is received (discussed in detail later). The values in the

Bid and Ask columns however, are dynamic; that is, they move up and down (in the vertical example) to reflect the market depth for the given commodity. The LTQ column 1006 shows the last traded quantity of the commodity. The relative position of the quantity value with respect to the Price values reflects the price at which that quantity was traded. Column 1001 labeled E/W (entered/working) displays the current status of the trader's orders. The status of each order is displayed in the price row where it was entered. For example, in cells 1007, the number next to S indicates the number of the trader's ordered lots that have been sold at the price in the specific row. The number next to W indicates the number of the trader's ordered lots that are in the market, but have not been filled—i.e. the system is working on filling the order. Blanks in this column indicate that no orders are entered or working at that price. In cells 1008, the number next to B indicates the number of the trader's ordered lots that have been bought at the price in the specific row. The number next to W indicates the number of the trader's ordered lots that are in the market, but have not been filled—i.e. the system is working on filling the order.

Various parameters are set and information is provided in column 1002. For example, "10:48:44" in cell 1009 shows the actual time of day. The L and R fields in cell 1010 indicate a quantity value, which may be added to the order quantity entered. This process is explained below with respect to trading under Mercury. Below the L and R fields, in cell 1011, a number appears which represents the current market volume. This is the number of lots that have been traded for the chosen contract. Cell 1012, "X 10", displays the Net Quantity, the current position of the trader on the chosen contract. The number "10" represents the trader's buys minus sells. Cell 1013 is the "Current Quantity"; this field represents the quantity for the next order that the trader will send to market. This can be adjusted with right and left clicks (up and down) or by clicking the buttons which appear below the Current Quantity in cells 1014. These buttons increase the current quantity by the indicated amount; for example, "10" will increase it by 10; "1H" will increase it by 100; "1K" will increase it by 1000. Cell 1015 is the Clear button; clicking this button will clear the Current Quantity field. Cell 1016 is the Quantity Description; this is a pull down menu allowing the trader to chose from three Quantity Descriptions. The pull down menu is displayed when the arrow button in the window is clicked. The window includes NetPos, Offset and a field allowing the trader to enter numbers.. Placing a number in this field will set a default buy or sell quantity. Choosing "Offset" in this field will enable the L/R buttons of cell 1010. Choosing "NetPos" in this field will set the current Net Quantity (trader's net position) as the trader's quantity for his next trade. Cell 1017 are +/- buttons; these buttons will alter the size of the screen—either larger (+) or smaller (-). Cell 1018 is used to invoke Net 0; clicking this button will reset the Net Quantity

(cell 1011) to zero. Cell 1019 is used to invoke Net Real; clicking this button will reset the Net Quantity (cell 10 11) to its actual position.

The inside market and market depth ascend and descend as prices in the market increase and decrease. For example, FIG. 4 shows a screen displaying the same market as that of FIG. 3 but at a later interval where the inside market, cells 1101, has risen three ticks. Here, the inside market for the commodity is 43 (best bid quantity) at 92 (best bid price) and 63 (best ask quantity) at 93 (best ask price). In comparing FIGS. 3 and 4, it can be seen that the price column remained static, but the corresponding bids and asks rose up the price column. Market Depth similarly ascends, and descends the price column, leaving a vertical history of the market.

As the market ascends or descends the price column, the inside market, might go above or below the price column displayed on a trader's screen. Usually a trader will want to be able to see the inside market to assess future trades. The system of the present invention addresses this problem with a one click centering feature. With a single click at any point within the gray area, 1021, below the "Net Real" button, the system will re-center the inside market on the trader's screen. Also, when using a three-button mouse, a click of the middle mouse button, irrespective of the location of the mouse pointer, will re-center the inside market on the trader's screen.

The same information and features can be displayed and enabled in a horizontal fashion. Just as the market ascends and descends the vertical Mercury display shown in FIGS. 3 and 4, the market will move left and right in the horizontal Mercury display. The same data and the same information gleaned from the dynamical display of the data is provided. It is envisioned that other orientations can be used to dynamically display the data and such orientations are intended to come within the scope of the present invention.

Next, trading commodities, and specifically, the placement of trade orders using the Mercury display is described. Using the Mercury display and trading method, a trader would first designate the desired commodity and, if applicable, the default quantities. Then he can trade with single clicks of the right or left mouse button. The following equations are used by the system to generate trade orders and to determine the quantity and price to be associated with the trade order. The following abbreviations are used in these formulas: P=Price value of row clicked, R=Value in R field, L=Value in L field, Q=Current Quantity, Q_a =Total of all quantities in AskQ column at an equal or better price than P, Q_b =Total of all quantities in BidQ column at an equal or better price than P, N=Current Net Position, Bo=Buy order sent to market and So=Sell order—sent to market.

Apy order entered using right mouse button

$$Bo=(Q_a+R)P \tag{Eq. 1}$$

If BidQ field clicked.

$$So=(Q_b+R)P \tag{Eq. 2}$$

If AskQ field clicked.

Orders entered using the left mouse button

If "Offset" mode chosen in Quantity Description field then:

$$Bo=(Q_a+L)P \tag{Eq. 3}$$

If BidQ field clicked.

$$SO=(Q_b+L)P \tag{Eq. 4}$$

If AskQ field clicked.

If "number" mode chosen in Quantity Description field then:

$$Bo=QP \tag{Eq. 5}$$

$$So=QP \tag{Eq. 6}$$

If "NetPos" mode chosen in Quantity Description field then:

$$Bo=NP \tag{Eq. 7}$$

$$So=NP \tag{Eq. 8}$$

Orders can also be sent to market for quantities that vary according to the quantities available in the market; quantities preset by the trader; and which mouse button the trader clicks. Using this feature, a trader can buy or sell all of the bids or asks in the market at or better than a chosen price with one click. The trader could also add or subtract a preset quantity from the quantities outstanding in the market. If the trader clicks in a trading cell—i.e. in the BidQ or AskQ column, he will enter an order in the market. The parameters of the order depend on which mouse button he clicks and what preset values he set.

Using the screen display and values from FIG. 5, the placement of trade orders using the Mercury display and trading method is now described using examples. A left click on the 18 in the BidQ column 1201 will send an order to market to buy 17 lots (quantity #chosen on the Quantity Description pull down menu cell 1204) of the commodity at a price of 89 (the corresponding price in the Prc column 1203). Similarly, a left click on the 20 in the AskQ column 1202 will send an order to market to sell 17 lots at a price of 90.

Using the right mouse button, an order would be sent to market at the price that corresponds to the row clicked for the total quantity of orders in the market that equal or better the price in that row plus the quantity in the R field 1205. Thus, a right click in the AskQ column 1202 in the 87 price row will send a sell order to market at a price of 87 and a quantity of 150. 150 is the sum of all the quantities 30, 97, 18 and 5. 30, 97 and 18 are all of the quantities in the market that would meet or better the trader's sell order price of 87. These quantities are displayed in the BidQ column 1201 because this column represents the orders outstanding in the market to purchase the commodity at each corresponding price. The quantity 5 is the quantity pre-set in the R field 1205.

Similarly, a right click in the BidQ column 1201 at the same price level of 87 would send a buy limit order to market for a quantity of 5 at a price of 87. The quantity is determined in the game manner as above. In this example, though, there are no orders in the market that equal or better the chosen price—there are no quantities in the AskQ column 1202 that equal or better this price. Therefore, the sum of the equal or better quantities is zero ("0"). The total order entered by the trader will be the value in the R field, which is 5.

An order entered with the left mouse button and the "Offset" option chosen in the quantity description field 1204

11

will be calculated in the same way as above, but the quantity in the L field **1206** will be added instead of the quantity in the R field **1205**. Thus, a left click in the BidQ column **1201** in the 92 price row will send a buy order to market at a price of 92 and a quantity of 96. 96 is the sum of all the quantities 45, 28, 20 and 3. 45, 28 and 20 are all quantities in the market that would meet or better the trader's buy order price of 92. These quantities are displayed in the AskQ column **1202** because this column represents the orders outstanding in the market to sell the commodity at each corresponding price. The quantity 3 is the quantity pre-set in the L field **1206**.

The values in the L or R fields may be negative numbers. This would effectively decrease the total quantity sent to market. In other words, in the example of a right click in the AskQ column **1202** in the 87 price row, if the R field was -5, the total quantity sent to market would be 140 (30+97+18+(-5)).

If a trader chose the "NetPos" option in the quantity description field **1204**, a right click would still work as explained above. A left click would enter an order with a price corresponding to the price row clicked and a quantity equal to the current Net position of the trader. The Net position of the trader is the trader's current position on the chosen contract. In other words, if the trader has bought 10 more contracts than he has sold, this value would be 10. NetPos would not affect the quantity of an order sent with a right click.

If the trader chose a number value in the quantity description, a left click would send an order to market for the current quantity chosen by the trader. The default value of the current quantity will be the number entered in the quantity description field, but it could be changed by adjusting the figure in the current quantity field **1204**.

This embodiment of the invention also allows a trader to delete all of his working trades with a single click of either the right or left mouse button anywhere in the last traded quantity (LTQ) column **1207**. This allows a trader to exit the market immediately. Traders will use this feature when they are losing money and want to stop the losses from piling up. Traders may also use this feature to quickly exit the market upon making a desired profit. The invention also allows a trader to delete all of his orders from the market at a particular price level. A click with either mouse button in the Entered/Working (E/W) column **1208** will delete all working orders in the cell that was clicked. Thus, if a trader believes that previously sent orders at a particular price that have not been filled would be poor trades, he can delete these orders with a single click.

The process for placing trade orders using the Mercury display and trading method of the present invention as described above is shown in the flowchart of FIG. 6. First, in step **1301**, the trader has the Mercury display on the trading terminal screen showing the market for a given commodity. In step **1302**, the parameters are set in the appropriate fields, such as the L and R fields and the Current Quantity, NetPos or Offset fields from the pull down menu. In step **1303**, the mouse pointer is positioned and clicked over a cell in the Mercury display by the trader. In step **1304**, the system determines whether the cell clicked is a tradable cell (i.e. in the AskQ column or BidQ column). If not, then in step **1305**, no trade order is created or sent and, rather, other quantities are adjusted or functions are performed based upon the cell selected. Otherwise, in step **1306**, the system determines whether it was the left or the right button of the mouse that was clicked. If it was the right, then in step **1307**, the system will use the quantity in the R field when it

12

determines the total quantity of the order in step **1310**. If the left button was clicked, then in step **1308**, the system determines which quantity description was chosen: Offset, NetPos or an actual number.

If Offset was chosen, then the system, in step **1309**, will use the quantity in the L field when it determines the total quantity of the order in step **1310**. If NetPos was chosen, then the system, in step **1312**, will determine that the total quantity for the trade order will be current NetPos value, i.e. the net position of the trader in the given commodity. If an actual number was used as the quantity description, then, in step **1311**, the system will determine that the total quantity for the trade order will be the current quantity entered. In step **1310**, the system will determine that the total quantity for the trade order will be the value of the R field (if step **1307** was taken) or the value of the L field (if step **1309** was taken) plus all quantities in the market for prices better than or equal to the price in the row clicked. This will add up the quantities for each order in, the market that will fill the order being entered by the trader (plus the L or R value).

After either steps **1310**, **1311** or **1312**, the system, in step **1313**, determines which column was clicked, BidQ or AskQ. If AskQ was clicked, then, in step **1314**, the system sends a sell limit order to the market at the price corresponding to the row for the total quantity as already determined. If BidQ was clicked, then, in-step **1315**, the system sends a buy limit order to the market at the price corresponding to the row for the total quantity as already determined.

It should be understood that the above description of the invention and specific examples, while indicating preferred embodiments of the present invention, are given by way of illustration and not limitation. Many changes and modifications within the scope of the present invention may be made without departing from the spirit thereof, and the present invention includes all such changes and modifications.

We claim:

1. A method for displaying market information relating to and facilitating trading of a commodity being traded in an electronic exchange having an inside market with a highest bid price and a lowest ask price on a graphical user interface, the method comprising:

dynamically displaying a first indicator in one of a plurality of locations in a bid display region, each location in the bid display region corresponding to a price level along a common static price axis, the first indicator representing quantity associated with at least one order to buy the commodity at the highest bid price currently available in the market;

dynamically displaying a second indicator in one of a plurality of locations in an ask display region, each location in the ask display region corresponding to a price level along the common static price axis, the second indicator representing quantity associated with at least one order to sell the commodity at the lowest ask price currently available in the market;

displaying the bid and ask display regions in relation to fixed price levels positioned along the common static price axis such that when the inside market changes, the price levels along the common static price axis do not move and at least one of the first and second indicators moves in the bid or ask display regions relative to the common static price axis;

displaying an order entry region comprising a plurality of locations for receiving commands to send trade orders, each location corresponding to a price level along the common static price axis; and

in response to a selection of a particular location of the order entry region by a single action of a user input

13

device, setting a plurality of parameters for a trade order relating to the commodity and sending the trade order to the electronic exchange.

2. The method of claim 1 wherein the bid and ask display regions and the order entry region comprise columns with a plurality of cells that are displayed as a grid such that the cells of each column are aligned.

3. The method of claim 1 wherein the bid and ask display regions and the order entry region are oriented vertically.

4. The method of claim 1 wherein the bid and ask display regions and the order entry region are oriented horizontally.

5. The method of claim 1 wherein one of the plurality of locations of bid display region comprises a blank region in which there is no first indicator displayed.

6. The method of claim 1 wherein one of the plurality of locations of the ask display region comprises a blank region in which there is no first indicator displayed.

7. The method of claim 1 comprising the step of displaying at least a portion of the common static price axis in a price display region.

8. The method of claim 7 wherein the bid display region, the ask display region, the order entry region and the price display region comprise columns with a plurality of cells that are displayed as a grid such that the cells of each column are aligned.

9. The method of claim 7 wherein the bid display region, the ask display region, the order entry region and the price display region are oriented vertically.

10. The method of claim 7 wherein the bid display region, the ask display region, the order entry region and the price display region are oriented horizontally.

11. The method of claim 1 further comprising the steps of: dynamically displaying a third indicator at one of the plurality of locations in the bid display region, the third indicator representing quantity associated with at least one order to buy the commodity at a price different than the highest bid price currently available in the market; and

dynamically displaying a fourth indicator at one of the plurality of locations in the ask display region, the fourth indicator representing quantity associated with at least one order to sell the commodity at a price different than the lowest ask price currently available in the market.

12. The method of claim 11 wherein a location of the plurality of locations of the bid display region comprises a blank region in which there is no first or third indicator displayed.

13. The method of claim 1 wherein a location of the plurality of locations of the ask display region comprises a blank region in which there is no second or fourth indicator displayed.

14. The method of claim 1 wherein the order entry region comprises:

a bid order entry region comprising a plurality of locations for receiving commands to send buy orders, each location corresponding to a price level along the common static price axis; and

an ask order entry region comprising a plurality of locations for receiving commands to send sell orders, each location corresponding to a price level along the common static price axis.

15. The method of claim 14 wherein the bid order entry region overlaps with the bid display region and the ask order entry region overlaps with the ask display region.

16. The method of claim 1 further comprising dynamically displaying an entered order indicator in association with the price levels arranged along the common static price axis.

14

17. The method of claim 16 wherein the entered order indicator is displayed in an entered order region.

18. The method of claim 1 further comprising dynamically displaying a last trade indicator in association with the common static price axis.

19. The method of claim 18 wherein the last trade indicator is displayed in a last trade region.

20. The method of claim 1 further comprising the steps of: displaying the first indicator at a first location associated with a first price level on the common static price axis at a first time; and

displaying the first indicator at a second location associated with a different price level on the common static price axis at a second time subsequent to the first time.

21. The method of claim 1 further comprising the steps of: displaying the second indicator at a first location associated with a first price level on the common static price axis at a first time; and

displaying the second indicator at a second location associated with a different price level on the common static price axis at a second time subsequent to the first time.

22. The method of claim 1 further comprising the steps of: displaying the first indicator at a first location associated with a particular price level on the common static price axis; and

repositioning the common static price axis such that the first indicator is displayed at a second location associated with the particular price level on the common static price axis.

23. The method of claim 1 further comprising the steps of: displaying the second indicator at a first location associated with a particular price level on the common static price axis; and

repositioning the common static price axis such that the second indicator is displayed at a second location associated with the particular price level on the common static price axis.

24. The method of claim 1 wherein the bid and ask display regions are displayed in different colors.

25. The method of claim 1 wherein the first and second indicators are displayed in different colors.

26. The method of claim 1 wherein the bid and ask display regions are displayed in a window further comprising centering the display of the first and second indicators in the window upon receipt of a centering instruction.

27. A computer readable medium having program code recorded thereon for execution on a computer for displaying market information relating to and facilitating trading of a commodity being traded in an electronic exchange having an inside market with a highest bid price and a lowest ask price on a graphical user interface, the program code causing a machine to perform the following method steps:

dynamically displaying a first indicator in one of a plurality of locations in a bid display region, each location in the bid display region corresponding to a price level along a common static price axis, the first indicator representing quantity associated with at least one order to buy the commodity at the highest bid price currently available in the market;

dynamically displaying a second indicator in one of a plurality of locations in an ask display region, each location in the ask display region corresponding to a price level along the common static price axis, the second indicator representing quantity associated with at least one order to sell the commodity at the lowest ask price currently available in the market;

15

displaying the bid and ask display regions in relation to fixed price levels positioned along the common static price axis such that when the inside market changes, the price levels along the common static price axis do not move and at least one of the first and second indicators moves in the bid or ask display regions relative to the common static price axis;

displaying an order entry region comprising a plurality of locations for receiving commands to send trade orders, each location corresponding to a price level along the common static price axis; and

in response to a selection of a particular location of the order entry region by a single action of a user input device, setting a plurality of parameters for a trade order relating to the commodity and sending the trade order to the electronic exchange.

28. The method of claim 11 wherein the first and third indicators are displayed in locations of the bid display region that are arranged along an axis which is parallel to the common static price axis.

29. The method of claim 11 wherein the second and fourth indicators are displayed in locations of the ask display region that are arranged along an axis which is parallel to the common static price axis.

30. The method of claim 11 comprising the steps of: displaying the first indicator at a first location associated with a first price level on the common static price axis at a first time; and

displaying the first indicator at a second location associated with a different price level on the common static price axis at a second time subsequent to the first time.

31. The method of claim 30 wherein the third and fourth indicators remain in the same location in the bid and ask display regions, respectively, before and after the first indicator is displayed at the second location.

32. The method of claim 31 wherein each location of the bid display region corresponds to a different price level along the common static price axis and each location of the ask display region corresponds to a different price level along the common static price.

16

33. The method of claim 11 comprising the steps of: displaying the second indicator at a first location associated with a first price level on the common static price axis at a first time; and

displaying the second indicator at a second location associated with a different price level on the common static price axis at a second time subsequent to the first time.

34. The method of claim 33 wherein the third and fourth indicators remain in the same location in the bid and ask display regions, respectively, before and after the second indicator is displayed at the second location.

35. The method of claim 34 wherein each location of the bid display region corresponds to a different price level along the common static price axis and each location of the ask display region corresponds to a different price level along the common static price.

36. The method of claim 1 wherein the bid and ask display regions are displayed separately.

37. The method of claim 1 wherein the first and second indicators are based on an exchange order book and wherein the price levels along the common static price axis do not move in response to the addition of a price to the exchange order book, the additional price comprising a price for which there is a corresponding displayed location in at least one of the bid and ask display regions.

38. The method of claim 37 wherein the price levels along the common static price axis do not move in response to the removal of a price from the exchange order book, the removed price comprising a price for which there is a corresponding displayed location in at least one of the bid and ask display regions.

39. The method of claim 1 wherein the first and second indicators are based on an exchange order book and the price levels along the common static price axis never move in response to a price change in the exchange order book relating to a price which corresponds to a displayed location in at least one of the bid and ask display regions.

40. The method of claim 1 the plurality of parameters comprises a price and type of order.

* * * * *



US006766304C1

(12) **EX PARTE REEXAMINATION CERTIFICATE** (6739th)
United States Patent
Kemp, II et al.

(10) **Number:** **US 6,766,304 C1**
(45) **Certificate Issued:** **Mar. 31, 2009**

(54) **CLICK BASED TRADING WITH INTUITIVE GRID DISPLAY OF MARKET DEPTH**

6,343,278 B1 1/2002 Jain et al.
6,421,653 B1 7/2002 May
2003/0097325 A1 5/2003 Friesen et al.

(75) Inventors: **Gary Allan Kemp, II**, Winnetka, IL
(US); **Jens-Uwe Schluetter**, Evanston, IL (US); **Harris Brumfield**, Chicago, IL (US)

FOREIGN PATENT DOCUMENTS

EP 1319211 B1 2/2001
WO WO 91/14231 9/1991
WO WO 99/19821 4/1999
WO WO 99/53424 4/1999

(73) Assignee: **Trading Technologies International, Inc.**, Evanston, IL (US)

OTHER PUBLICATIONS

Reexamination Request:

No. 90/008,577, May 25, 2007

Defendant GL Trade Americas, Inc's Supplemental Responses and Objections to Interrogatory Nos. 5, 17, and 18, Jul. 24, 2006.

Reexamination Certificate for:

Patent No.: **6,766,304**
Issued: **Jul. 20, 2004**
Appl. No.: **09/894,637**
Filed: **Jun. 27, 2001**

User Guide V4.51 LIFFE Connect for Futures by GL Trade, Jun. 1999, DX 385, G 025751-G 025806, DTX 385.

CAC and STOXX Futures on MATIF NSC VF Launch: Mar. 15, 1999, DX 537, G 107561-G 107574, DTX 537.

GL WIN Version 4.50, Mar. 3, 1999, DX 538, G 107459-G 107480, DTX 538.

Trading Pad User Manual, Aug. 10, 1999, DX 539, G 112123-G 112131, DTX 539.

Email from Wattier to M. Cartier attaching Matif VF: V4.50 manual, Mar. 30, 1998, DX 592, MC000046-MC000116, DTX 592.

LIFFE Connect for Futures User Guide V4.50, Feb. 1999, DX 593, G 122900-G 122938, DTX 593.

Certificate of Correction issued Nov. 16, 2004.

Related U.S. Application Data

(62) Division of application No. 09/590,692, filed on Jun. 9, 2000, now Pat. No. 6,772,132.

(60) Provisional application No. 60/186,322, filed on Mar. 2, 2000.

Int. Cl.

G06Q 40/00 (2006.01)
G06F 3/048 (2006.01)

(Continued)

Primary Examiner—Jeanne M. Clark

(52) **U.S. Cl.** **705/36 R; 705/35; 715/814**

(57) **ABSTRACT**

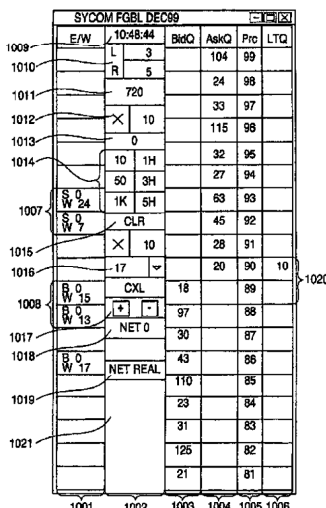
(58) **Field of Classification Search** None
See application file for complete search history.

A method and system for reducing the time it takes for a trader to place a trade when electronically trading on an exchange, thus increasing the likelihood that the trader will have orders filled at desirable prices and quantities. The "Mercury" display and trading method of the present invention ensure fast and accurate execution of trades by displaying market depth on a vertical or horizontal plane, which fluctuates logically up or down, left or right across the plane as the market prices fluctuates. This allows the trader to trade quickly and efficiently.

(56) **References Cited**

U.S. PATENT DOCUMENTS

5,243,331 A 9/1993 McCausland et al.
5,297,031 A 3/1994 Gutterman et al.
5,960,411 A 9/1999 Hartman et al.
6,115,698 A 9/2000 Tuck et al.



OTHER PUBLICATIONS

User Guide V4.50 LIFFE Connect for Futures by GL Trade, Mar. 1999, DX 598, G 123439–G 123477, DTX 598.

User Guide V4.60 LIFFE Connect for Futures by GL Trade, Jun. 1999, DX 605, G 123548–G 123603, DTX 605.

Matif VF: V4.50 Manual, Mar. 30, 1999, DX 612, MC 000047–MC 000116, DTX 612.

CAC and STOXX Futures on MATIFF NSC VF–GL Win User Info Note, Mar. 15, 1999, DX 626, CME–E11252–11265, DTX 626.

Utility Patent Application Transmittal Re: Computer Trading System, Method and Interface, Apr. 15, 1999, Mauro, Kleia, and Buist, PX 368.

Declaration of W. Buist re: WIT DSM System, Apr. 26, 2006, PX 365, DTX 1777.

Market Trader—Nikkel 225 & Nikkel 300 Index options and Index futures trading users guide, Mar. 20, 1998, DX 618, G100444–G100462, DTX 618.

Directory of Software Solutions for LIFFE Connect, issue 3, Jun. 10, 1999, DX 157, DTX 157.

TSE Manual (Japanese Document), Nov. 15, 2005, DX179, TSE647–995, w/certified translation eS62258–62366 [1SE609–647,694–711,714–721,735–736,749–756, 759–760,779–782,784–810,982–995].

The Application Program Interface (API) Reference Manual for LIFFE Connect, Release 3.0, Sep. 1998, DDX 159, DTX 159, eS00060055–eS00060145.

The Application Program Interface (API) Reference Manual for LIFFE Connect, Release 3.2, Dec. 1998, DDX 161, DTX 161, eS00060239–eS00060331.

The Application Program Interface (API) Reference Manual for LIFFE Connect, Release 3.3, Jan. 1999, DDX 162, DTX 162, eS00059959–eS00060054.

GL Trading Pad Manual, G0020819–G0020826.

Trading pad.doc Document, Jan. 26, 1999, G0111671–G0111672.

Directory of Software Solutions for LIFFE Connect, Feb. 1999, G009006–G009042.

GL WIN et Logiciels complementaires (French), Jul. 1999, G009875–G010238.

tradepad.txt (French), Mar. 8, 2000, G0025616–G0025618.

LIFFE Connect for Futures User Guide v4.50 Beta, Jan. 1999, G0025623–G0025646.

GL Enhancements Software Version 4.11f, Oct. 29, 1998, G0060853–G0060854.

GL Enhancements Update, Jan. 27, 1999, G0101682–G0101688.

GL WIN Version 4.51, G0118856–G0118865.

LIFFE Connect for Equity Options User Guide v4.30, Nov. 1998, G0119052–G0119086.

Screenshot of GL TradePad, G0119660.

LIFFE Connect for Futures Schedule for Project Deliverables, Feb. 4, 1999, G0119681–G0119682.

LIFFE Connect for Futures—Project Update #1, Meeting of Jan. 11, 1999, G0119691–G0119697.

Cahier de charges.doc, Feb. 9, 1999, G0111752–G0111758.

LIFFE Connect for Futures User Guide v4.5, Mar. 1999, G0025751–25806.

GL WIN Version 4.50, Mar. 3, 1999, G0025647–25668.

Internal Product News doc on QuickTrade, G0020468–20471.

GL Product Leaflet Re: Mosaic, G0022529–22530.

LIFFE Connect for Futures leaflet, G0021609–21614.

“Guidelines for Operating the Trading Terminals”, TSE Publication 2, 1998, TSE628–643, REFCO6698–6713, with two translations.

“TSE 50th Anniversary Book of Materials”, TSE Publication 3, Apr. 1989–Mar. 1999, TSE644–646, REFCO6714–6719, with two translations.

“Next–Generation Futures Options Trading System”, Participants Seminar Materials, TSE Publication 1, Sep. 1997, TSE609–TSE627, REFCO6679–6697, with two translations.

Deposition testimony of Laurent Havard dated Apr. 24–26, 2007, May 12, 2007, Jun. 21, 2007 and Sep. 5, 2007 with DDX 506; DDX 508; DDX 517; DDX 539; DDX 551–568; DDX 570–573; DDX 575; DDX 603; PDX 462; PDX 464–483; PDX 767–769; PDX 771–774; PDX 875–877; PDX 882–888 and PDX 893.

Trial Testimony of Laurent Havard dated Sep. 21, 2007 with DTX 384; DTX 520; DTX 561–62; DTX 570; DTX 573; DTX 575; DTX 593; DTX 750–52; DTX 3011; DTX 3017–18; DTX 3050; PTX 575; PTX 2064; PTX 2074; PTX 2077; PTX 2079.

Deposition testimony of Jean Cedric Jollant dated Apr. 26, 2007 and Jun. 13, 2007 with DDX 384; DDX 517; DDX 520; DDX 551–568; DDX 575–577; PDX 465–483.

Trial testimony of Jean Cedric Jollant dated Sep. 20, 2007 with DTX 157; DTX 473; DTX 719; DTX 551–64; DTX 598; DTX 722; DTX 1903; DTX 3009–10; DTX 3014; DTX 3016–18 DTX 3020; DTX 3023; DTX 3025; PTX 166; PTX 520; PTX 526; PTX 539; PTX 573; PTX 575; PTX 579; PTX 2065.

Deposition testimony of Marc Lorin dated Sep. 5, 2007 with DDX 385; DDX 721–722; DDX 730.

Deposition testimony of Christopher Malo dated May 23, 2007 with DDX 524.

Deposition testimony of Fred Mastro dated May 21, 2007 with DDX 638; PDX 538; PDX 540–543.

Trial testimony of Fred Mastro dated Sep. 25, 2007 with DTX 592.

Deposition testimony of William McHarris dated Apr. 10, 2007 with PDX 416–417.

Deposition testimony of Josephine Sheng dated Jun. 26, 2007 with DDX 520; DDX 522; DDX 536; DDX 575; PDX 493; PDX 683–683a, PDX 775.

Deposition testimony of Bruno Spada dated Apr. 30, 2007 and May 2, 2007 with DDX 384–385; DDX 519–21; DDX 537–38; DDX 579–580; DDX 522; DDX 538; PDX 493–495; PDX 519–522.

Trial testimony of Bruno Spada dated Sep. 24, 2007 with DTX 306; DTX 384; DTX 518–522; DTX 524; DTX 575; DTX 579–580; DTX 593; DTX 626; DTX 628; DTX 646; DTX 1899 DTX 2086; DTX 3020–3021; DTX 3058–3059; DTX 3061; DTX 3085; PTX 737; PTX 840; PTX 2083; PTX 2087; PTX 2099; PTX 2101.

Deposition testimony of Marcel Tchitchiamia dated May 10, 2007–May 11, 2007 with DDX 156–157; DDX 168; DDX 384–85; DDX 538; DDX 592–93A; DDX 595–98; DDX 602–06; DDX 608–11 PDX 494; PDX 502; PDX 506; PDX 612.

- Deposition testimony of Neil Treloar dated Jun. 19, 2007 with DDX 384; DDX 539–39A; DDX 724; DDX 726; PDX 492; PDX 750–752.
- Trial testimony of Neil Treloar dated Sep. 21, 2007 and Sep. 24, 2007 with DTX 2040–2042.
- Trial testimony of Gerard Varjacques dated Sep. 28, 2007 with PTX 509–510 and PTX 513.
- Deposition testimony of Amy Watson dated Jun. 12, 2007 with DDX 626A; DDX 700 and PDX 636.
- Deposition testimony of Barbara Wattiez dated Jun. 16, 2007 with DDX 719–723.
- Trial testimony of Barbara Wattiez dated Sep. 28, 2007 with DTX 592–593A; DTX 597–598; DTX 718–719; DTX 722.
- Deposition testimony of Christopher Buist dated Jun. 22, 2006 with PDX 358–364 and DDX 283–284.
- Deposition testimony of Walter Buist dated Jun. 23, 2006 with DX 315; PDX 310–315; PDX 365 and PDX 368–370.
- Digital trading facility weekly operations meeting outline, DX 444, DTX 444, CM 006661–CM 006661, May 10, 1999.
- Chart re DSM QA Test Plain—project plan in progress, DX 432, DTX 432, Nov. 4, 1998.
- User interface design specification for WIT capital digital stock market, DX 433, DTX 433 CM 008441–CM 008478, Jan. 18, 1999.
- Updated negotiations design to E. Lang from C. Mauro for review and approval prior to patent application, DX 434, CM 008410–CM 008414, DTX 434, Jan. 18, 1999.
- Notes re final additions/revisions, DX 435, CM 007949–CM 007955, DTX 435, Apr. 2, 1999.
- Meeting outline, DX 428, CM 00750–CM 007501, DTX 428, Sep. 11, 1998.
- Presentation re WIT Capital Digital stock market Phase 1 usability and customer response testing: Preliminary report of findings, DX 429, CM 007446–CM 007466, May 1, 2006.
- WIT Capital limit order book to L. Forrest from C. Mauro, DX 425, CM 007382–CM 007411, DTX 425, Apr. 20, 1998.
- User Interface Design for display options design, DX 426, CM 000249–CM 000287, DTX 426, Jul. 8, 1998.
- Letter from EPO to TT Re: Five Recently Filed European Patent Oppositions, Feb. 21, 2006.
- Notice of Opposition to a European Patent EP 1319211 B1, ANITRA Medienprojekte GmbH, Jan. 13, 2006.
- Notice of Opposition to a European Patent by Deutsche Borse AG, Jan. 12, 2006.
- Notice of Opposition to a European Patent by EccoWare Ltd., Jan. 13, 2006.
- Notice of Opposition to a European Patent by Rosenthal Collins Group LLC, Jan. 12, 2006.
- Notice of Opposition to a European Patent by Tick-IT GmbH, Jan. 13, 2006.
- A. Klein, WallStreet.com—Fat Cat Investing at the Click of a Mouse, Chapt. 14–16, 18, 23, 1998; Exhibit 16 (Cont'd).
- WIT Digital Stock Market, User Interface Rev. 9, Exhibit 15.
- Opposition Trading Technologies, Inc. Application No. 01920183.9 EP 1319211B1, Exhibit 4 (Japanese and English Versions), Sep. 1997.
- System for Buying and Selling Futures and Options Transaction Terminal Operational Guidelines, TSE Business Systems Dept., TSE647–995, eS062297–eS062380.
- Letter from EPO to TT Re: Further European Patent Opposition, Feb. 23, 2006.
- Letter from EPO to TT Re: Five Recently Filed European Patent Oppositions, Feb. 21, 2006.
- Letter from EPO to TT Enclosing European Patent Oppositions, Jan. 25, 2006.
- The Application Program Interface (API) Reference Manual for LIFFE Connect, Sep. 1998, release 3.1, EP 1 319 211 B1 Exhibit 7A, eS0060146–eS0060237.
- Deposition Transcript of Paul MacGregor, Nov. 1, 2005, Opposition EP 1 319 211 B1 Exhibit 9A.
- APT Trading Procedures (ATOM Version) of LIFFE, Apr. 3, 2001, Opposition EP 1 319 211 B1 Exhibit 9B.
- LIFFE APT User Guide, Jan. 1994, Opposition EP 1 319 211 B1 Exhibit 9C, LIFFE000262–LIFFE000363.
- APTplus Trading Procedures, Dec. 28, 1995, Opposition EP 1 319 211 B1 Exhibit 9D.
- IRIS Investment Support Systems Window AD, Opposition EP 1 319 211 B1 Exhibit 10.
- LIFFE's New Electronic Trading Platform for Futures, LIFFE 202–261, Opposition EP 1 319 211 B1 Exhibit 8D.
- TIFFE Internet Article, "New On-Screen Trading Terminals", E2.
- ORC Instructions for Use, Version 2.2.8., 1999.
- GL Trade Users Guide V4.51, LIFFE Connect for Futures, Jun. 1999, D2.
- Securities Industries News, "TT Upgrades Software Platform", Aug. 28, 2000 (D6).
- Letter to EPO from Karl Barnfather Enclosing Notice of Opposition (form 2300.1) and Grounds of Opposition (Annex 1), Jan. 12, 2006.
- Dow Jones & Reuters Factiva, "Firms Rush to Make LIFFE Connect Decision", Dec. 4, 1998, E6.
- Dow Jones & Reuters Factiva, "Date Broadcasting Partners with Alltech Investment to Provide Customers with Online Trading", Feb. 25, 1999, E8.
- Trading Pad Summary Document (E2).
- Trading Pad Document (E3).
- TT X–Trader Brochure, Dec. 1, 2006 (E7).
- MINEX Service Outline User Test/Orientation, Sep. 1992 (E9).
- Letter to J. Walanski from EPO Re: Payment, Apr. 20, 2005.
- Letter to J. Walanski from EPO Re: Decision to Grant TT Patent, Mar. 3, 2005.
- German Document from Tick-IT GmbH Filing New European Opposition, Jan. 14, 2006.
- Faxed copy of German Document from Tick-IT GmbH Filing New European Opposition, Jan. 13, 2006.
- Annex A to TT's Reply Brief.
- Annex B to TT's Reply Brief.
- Information Offer Form for Japanese Patent Application No. 2001–564025, Apr. 18, 2005 (Japanese).
- Memo Re: Futures/Options Trading System and Japanese Patent Application No. 2001–564025 (Japanese), Aug. 18, 2005.
- Callouts from TSE Publication 1 including reference numerals used in English translation (Japanese, full translation of Publication 1 included supra).
- Callouts from TSE Publication 2 including reference numerals used in English translation (Japanese, full translation of Publication 2 included supra).
- Notification of Offer Form (Japanese and English), Jun. 3, 2005.

“Orientation Materials for Participants: New Future Options Trading System,” Sep. 1997, Operation System Development Section, Tokyo Stock Exchange (in Japanese with accompanying English translation). Denoted by Bates Nos. TSE0000000609–TSE0000000627, 22 pages (English translation).

“Futures and Options Trading System: Transaction Terminal Operation Procedures,” Aug. 1998, Operation System Development Section, Tokyo Stock Exchange (in Japanese with accompanying English translation). Denoted by Bates Nos. TSE0000000628–TSE0000000643, 20 pages (English translation).

1
EX PARTE
REEXAMINATION CERTIFICATE
ISSUED UNDER 35 U.S.C. 307

NO AMENDMENTS HAVE BEEN MADE TO
THE PATENT

2
AS A RESULT OF REEXAMINATION, IT HAS BEEN
DETERMINED THAT:

5 The patentability of claims 1-40 is confirmed.

* * * * *

UNITED STATES PATENT AND TRADEMARK OFFICE
CERTIFICATE OF CORRECTION

PATENT NO. : 6,766,304 B2
DATED : July 20, 2004
INVENTOR(S) : Gary Allan Kemp II, Jens-Uwe Schluetter and Harris Brumfield

Page 1 of 1

It is certified that error appears in the above-identified patent and that said Letters Patent is hereby corrected as shown below:

Title page.

Item [56], **References Cited**, U.S. PATENT DOCUMENTS, add the following:

-- 4,903,201	A	2/1990	Wagner
5,101,353	A	3/1992	Lupien et al.
5,946,667	A	8/1999	Tull, Jr., et al.
6,035,287	A	3/2000	Stallaert et al.
2002/0138401	A1	9/2002	Allen et al. --

FOREIGN PATENT DOCUMENTS, add the following:

-- WO WO 95/35005 9/1995 --

Column 14.

Line 64, the word "Static" should be -- static --.

Column 15.

Line 26, after "claim 11" add the word -- further --.

Column 16.

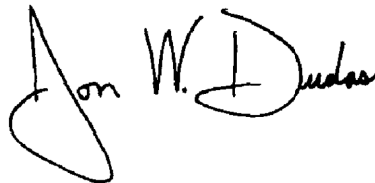
Line 1, after "claim 11" add the word -- further --.

Line 10, the word "an" should be -- and --.

Line 40, after "claim 1" add -- wherein --.

Signed and Sealed this

Sixteenth Day of November, 2004



JON W. DUDAS
Director of the United States Patent and Trademark Office