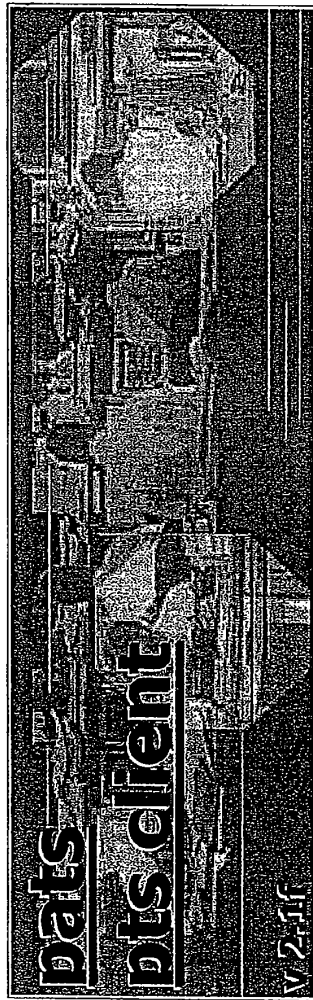


EXHIBIT
Garrow 119
5-26-05 MB



PAT Systems Ltd
22 Shand Street,
London SE1 2ES
www.patsystems.com

PATS 00067

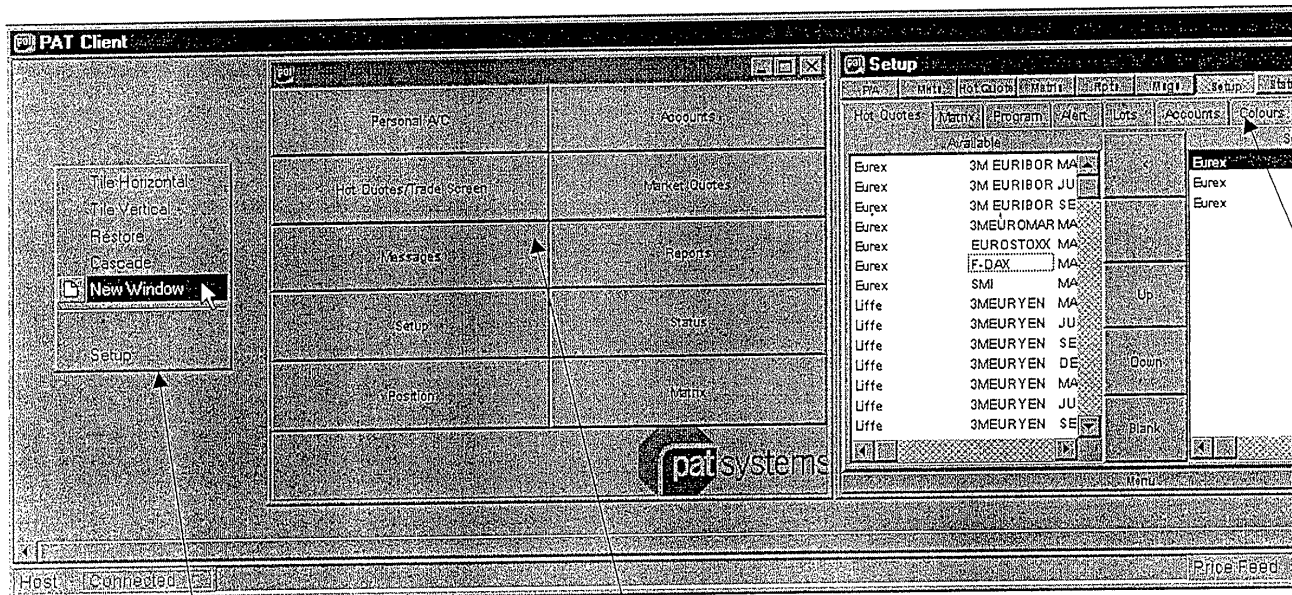
DEFENDANT'S
TRIAL EXHIBIT
119

PAT Client				Form/Menu											
Contract				SHORTSTERL				SEP00				DEC00			
Eurex \ EuroBOL \ MAR00	BH	CHP	Last												
	102.95	102.96	102.96												
	Size 22	93	61												
Eurex \ SCHATZ \ MAR00	102.47	102.48	102.46												
	Size 107	303	100												
Eurex \ EuroBUND \ MAR00	103.14	103.12	103.14												
	Size 19	5	62												
Liffe \ EBTP \ MAR00	102.00	102.25	102.22												
	Size 8	30	48												
Liffe \ EURIBOR.1 \ MAR00	96.335	96.340	96.340												
	Size 377	321	20												
Liffe \ EURIBOR.1 \ JUN00	95.940	95.945	95.940												
	Size 119	345	10												
Liffe \ EURIBOR.1 \ SEP00	95.650	95.655	95.650												
	Size 184	157	4												
Liffe \ EURIBOR.1 \ DEC00	95.260	95.265	95.265												
	Size 198	1	4												
Liffe \ FTSE100 \ MAR00	6705.0	6708.0	6705.0												
	Size 4	2	1												
Liffe \ JGB \ MAR00	132.00	132.05	132.00												
	Size 7	1	2												
Liffe \ LONGGILT \ MAR00	109.76	109.80	109.75												
	Size 8	30	1												
Liffe \ SHORTSTERL \ MAR00	93.52	93.53	93.53												
	Size 732	24	42												
Liffe \ SHORTSTERL \ JUN00	93.13	93.14	93.14												
	Size 101	10	40												
Merf \ BOHO-10 \ MAR00	8598	8702	8599												
	Size 10	35	1												

DOM											
Contract	Size	Accum	Price	St							
Eurex \ EuroBOL \ MAR00	0	0	109.70	8							
Eurex \ EuroBUND \ MAR00	0	0	109.74	20							
Eurex \ SCHATZ \ MAR00	0	0	109.72	1							
Liffe \ EBTP \ MAR00	0	0	109.71	5							
Liffe \ LONGGILT \ MAR00	0	0	109.70	1							
	0	0	109.74	28							
	0	0	109.72	29							
	0	0	109.71	34							
	0	0	109.70	35							
	0	0	109.69	3							
	0	0	109.68	43							
	0	0	109.66	48							
	0	0	109.65	49							
	0	0	109.63	51							

PATS 00069

Customising the layout



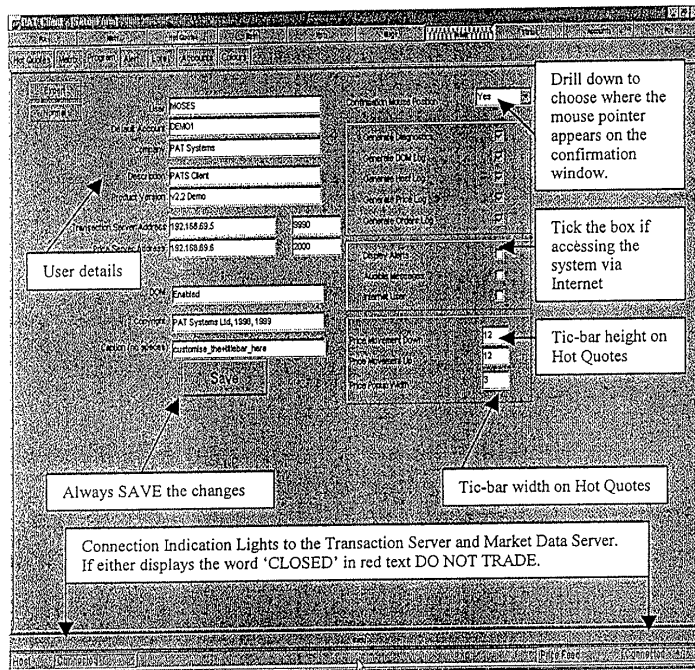
When first logging into the Client, the PATS (grey) desktop is displayed. To open trading windows on your PATS screen right click and select New Window.

This will open a PATS Menu where you may select which windows to open. To view Market prices open a HOT QUOTES window.

To select the contract to trade/view, enter the contract symbol into the Hot Quotes option. To view chosen contracts to the arrow keys. Blank onto the 'boardwatch' BLANK tab. Clicking on a contract and then using the arrow keys can arrange the contracts to appear

PATS 00070

Customising the layout



Remember: All windows within the PATS desktop are independent of each other and font sizes, colours, default trade quantities, and other specific settings must be made for each window else the windows will appear using the default size. It is necessary to SAVE any settings for them to take effect.

To maintain network efficiency and minimize the work that the Client PC processor has to do, each window can subscribe to its own set of market data. For this reason you must select the contracts from SET UP-HOT QUOTES so as to view key data on the P/A, MARKETS, HOT QUOTES and POS screens. This also means that it is possible to create multiple Hot Quotes e.g. one per exchange and give these Windows their own title bar caption.

It is possible to disable the confirmation window. You should consult your system administrator prior to doing this. The effect of this will be that as a price is clicked, an order is entered-there is no opportunity to check the order details.

PATS 00071

Explore Litigation Insights

Docket Alarm provides insights to develop a more informed litigation strategy and the peace of mind of knowing you're on top of things.

Real-Time Litigation Alerts



Keep your litigation team up-to-date with **real-time alerts** and advanced team management tools built for the enterprise, all while greatly reducing PACER spend.

Our comprehensive service means we can handle Federal, State, and Administrative courts across the country.

Advanced Docket Research



With over 230 million records, Docket Alarm's cloud-native docket research platform finds what other services can't. Coverage includes Federal, State, plus PTAB, TTAB, ITC and NLRB decisions, all in one place.

Identify arguments that have been successful in the past with full text, pinpoint searching. Link to case law cited within any court document via Fastcase.

Analytics At Your Fingertips



Learn what happened the last time a particular judge, opposing counsel or company faced cases similar to yours.

Advanced out-of-the-box PTAB and TTAB analytics are always at your fingertips.

API

Docket Alarm offers a powerful API (application programming interface) to developers that want to integrate case filings into their apps.

LAW FIRMS

Build custom dashboards for your attorneys and clients with live data direct from the court.

Automate many repetitive legal tasks like conflict checks, document management, and marketing.

FINANCIAL INSTITUTIONS

Litigation and bankruptcy checks for companies and debtors.

E-DISCOVERY AND LEGAL VENDORS

Sync your system to PACER to automate legal marketing.