

(54) **MULTIPLE, CONCURRENT DYNAMIC AUCTION EMULATION FOR NETWORKED ENVIRONMENTS**

(52) **U.S. Cl. 705/37**

(57) **ABSTRACT**

(76) **Inventors: Kenneth E. Hoffman, Bellevue, WA (US); David M. Vice, Seattle, WA (US)**

The invention concerns systems and methods for implementing systems that permit multiple, concurrent real time live or dynamic auction emulations in a networked environment. The systems include an auction database manager (ADM) component operatively linked to a rules based auctioneer (RBA) component and auction user interface manager (UIM) component. The ADM component manages data relevant to the auction environment such as bid parameters, lot data parameters, and user preference parameters; auction history data such as bid history data; and completed auction archive data. The RBA component manages the interactive nature of the live auction emulations by defining the parameters for data presentation to bidders, and causing the same to be delivered to relevant bidders via the UIM component. It also handles basic input and output calls to and from the ADM component. The UIM component transforms the RBA component output to specific display and communications protocols for devices possessed or accessible by the bidders based upon data acquired from each participating bidder. Input from active bidders is transformed by the UIM component and delivered to the RBA component for processing. These components, when integrated into a networked environment, permit multiple, concurrent, real time auctions that emulate real world live auctions wherein the price for an auction lot is determined not by an expiration of time but by a final highest bid. Methods are disclosed for carrying out the operations of the described components, as well as converting conventional static online auctions into dynamic auctions.

Correspondence Address:

Stephen M. Evans
Graybeal Jackson Haley LLP
Suite 350
155-108th Avenue NE
Bellevue, WA 98004-5901 (US)

(21) **Appl. No.: 09/898,899**

(22) **Filed: Jul. 2, 2001**

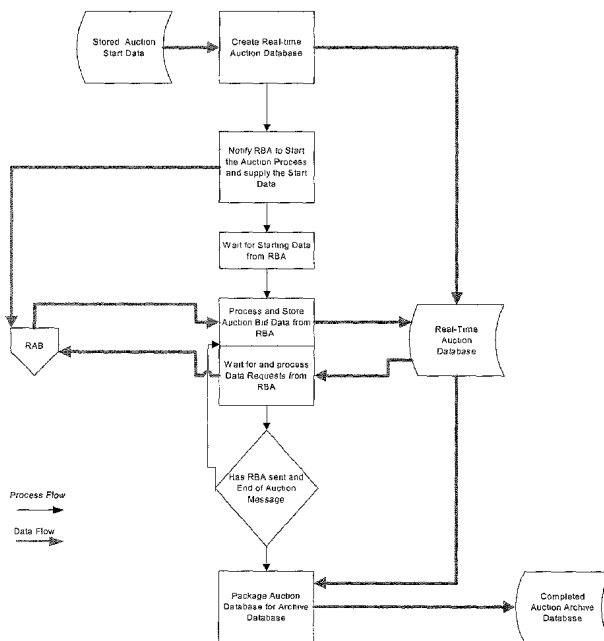
Related U.S. Application Data

(63) **Non-provisional of provisional application No. 60/215,346, filed on Jun. 30, 2000. Non-provisional of provisional application No. 60/215,350, filed on Jun. 30, 2000. Non-provisional of provisional application No. 60/215,349, filed on Jun. 30, 2000. Non-provisional of provisional application No. 60/215,347, filed on Jun. 30, 2000. Non-provisional of provisional application No. 60/215,348, filed on Jun. 30, 2000.**

Publication Classification

(51) **Int. Cl.⁷ G06F 17/60**

Real-time Auction Database Manager



Real-time Auction Data Flow

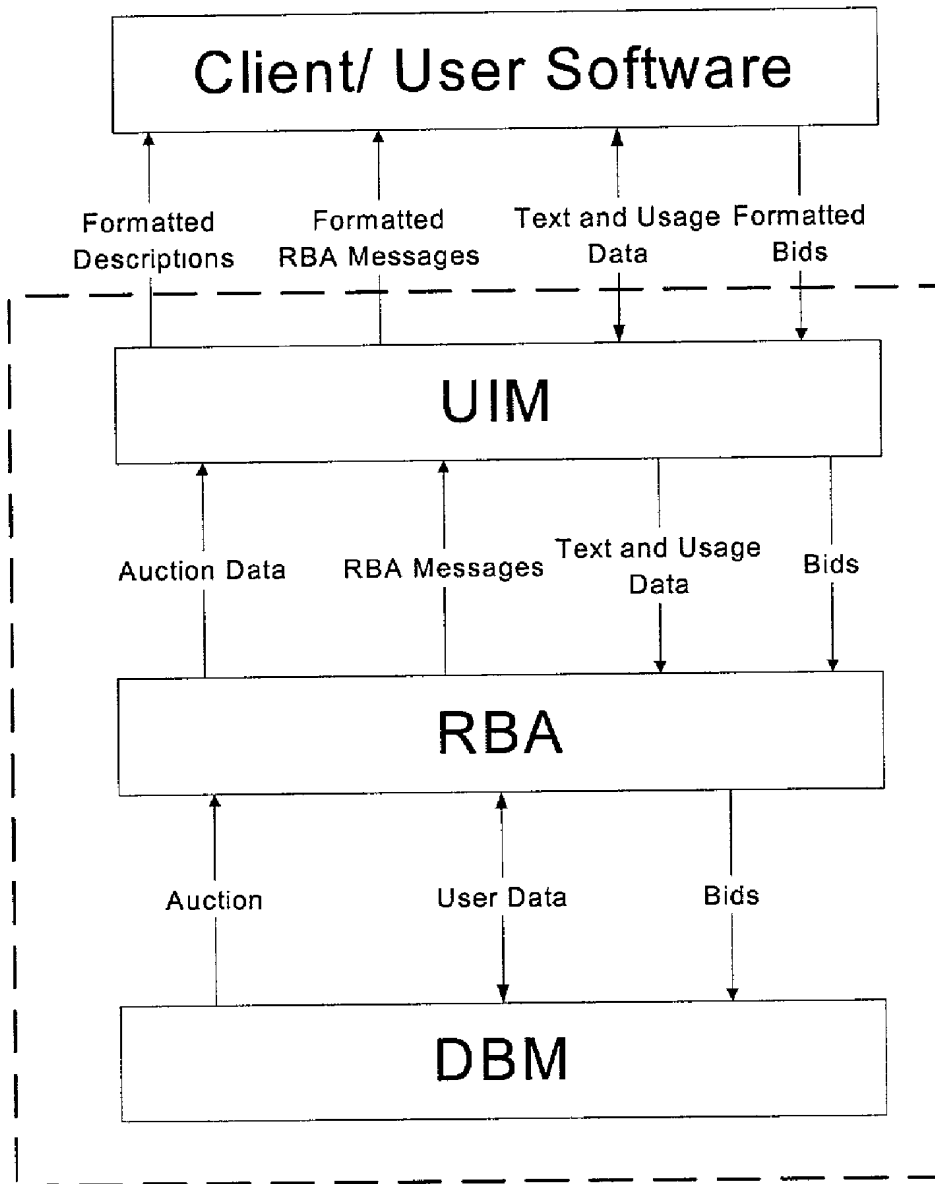


FIG. 1

Real-time Auction Database Manager

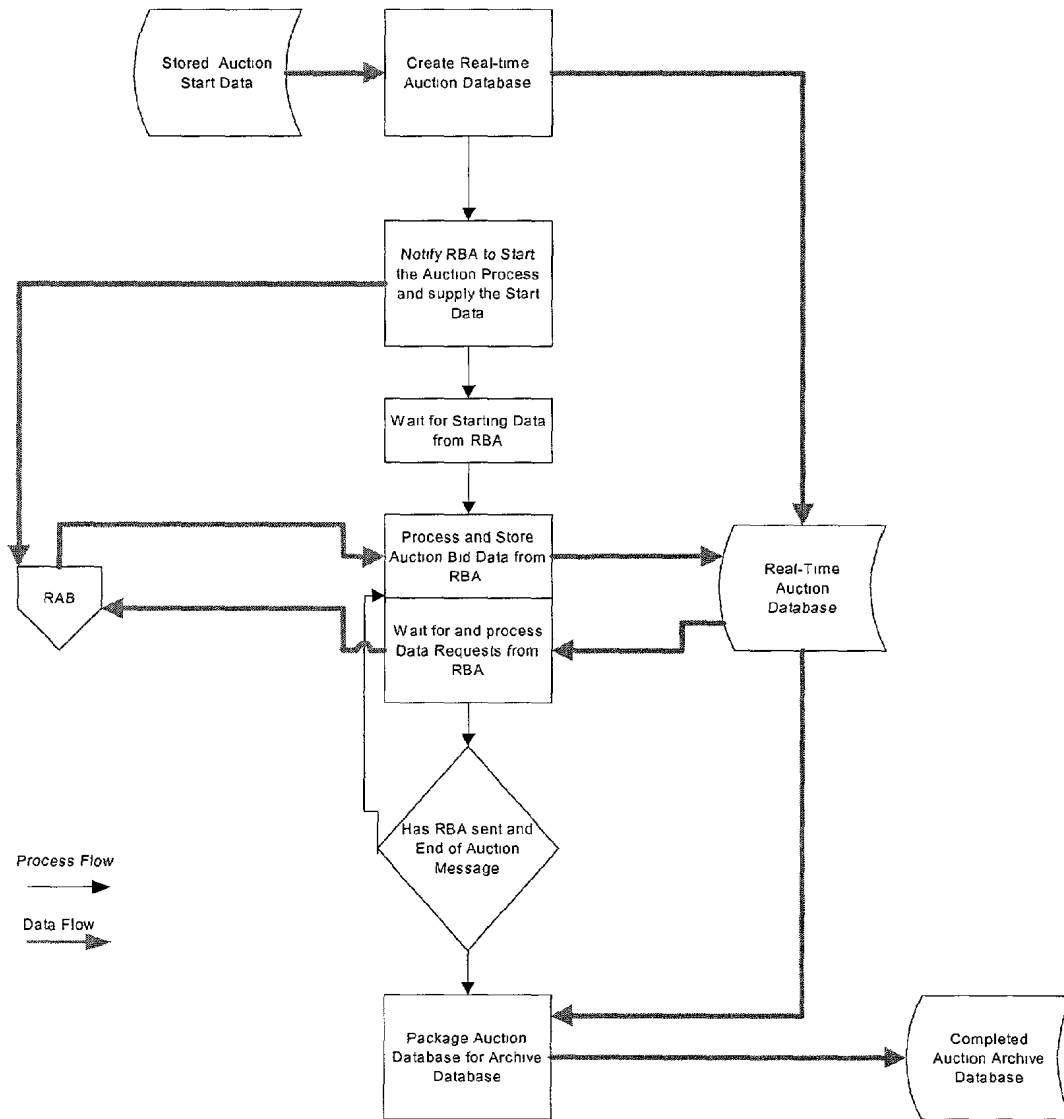


FIG. 2

Rules-based Auction User Interface Manager (UIM)

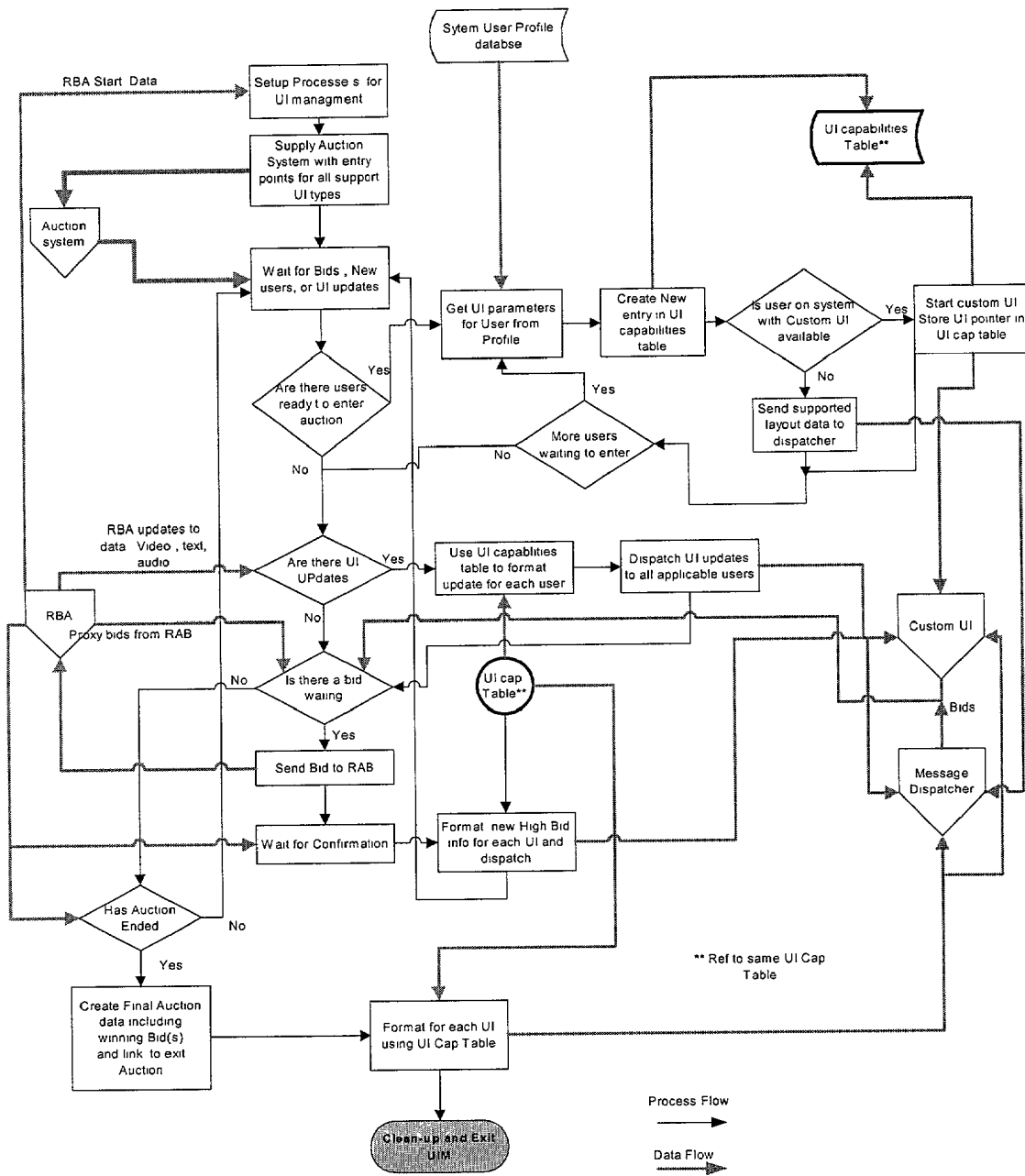


FIG. 3

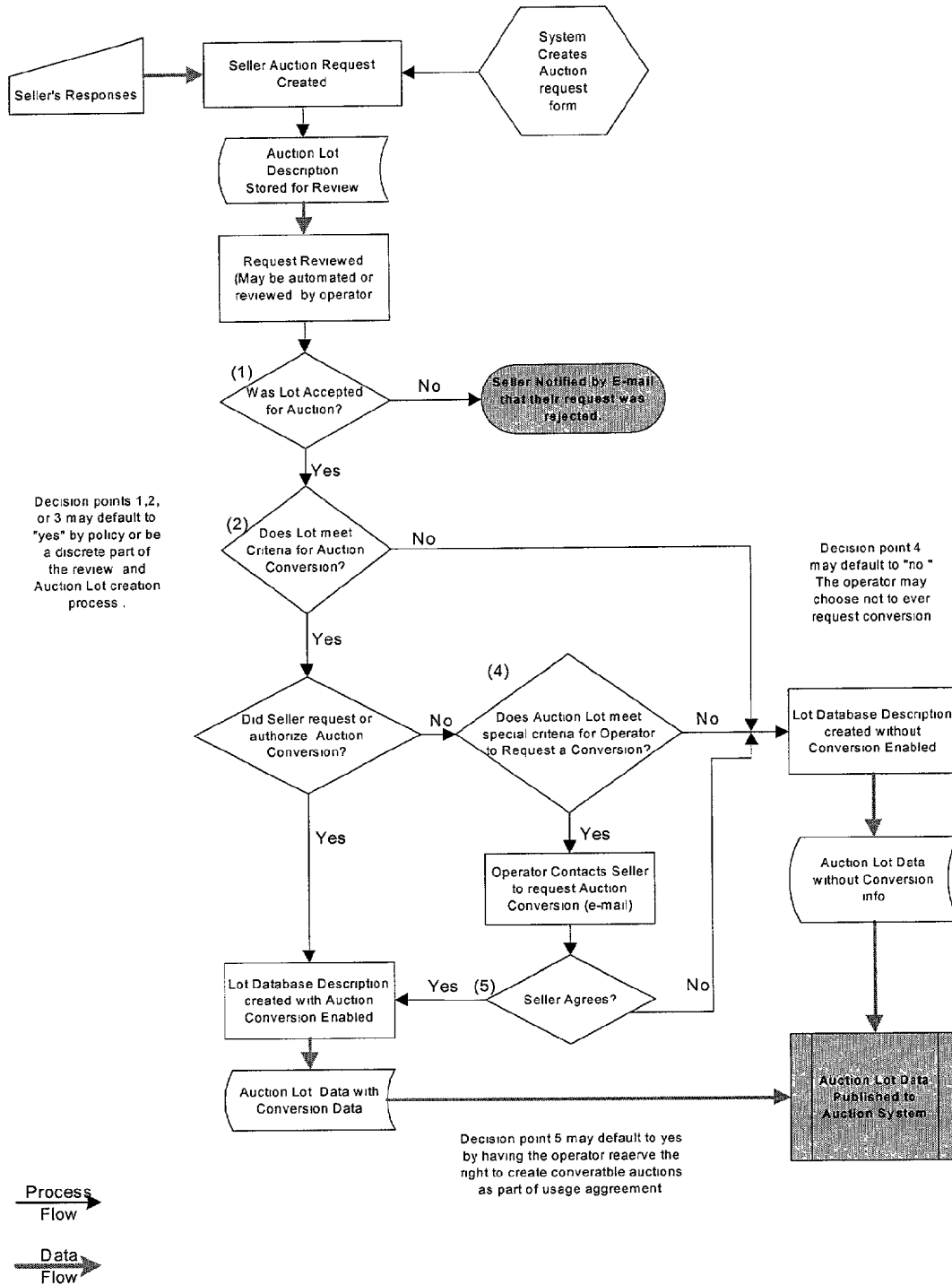


FIG. 4

Explore Litigation Insights

Docket Alarm provides insights to develop a more informed litigation strategy and the peace of mind of knowing you're on top of things.

Real-Time Litigation Alerts



Keep your litigation team up-to-date with **real-time alerts** and advanced team management tools built for the enterprise, all while greatly reducing PACER spend.

Our comprehensive service means we can handle Federal, State, and Administrative courts across the country.

Advanced Docket Research



With over 230 million records, Docket Alarm's cloud-native docket research platform finds what other services can't. Coverage includes Federal, State, plus PTAB, TTAB, ITC and NLRB decisions, all in one place.

Identify arguments that have been successful in the past with full text, pinpoint searching. Link to case law cited within any court document via Fastcase.

Analytics At Your Fingertips



Learn what happened the last time a particular judge, opposing counsel or company faced cases similar to yours.

Advanced out-of-the-box PTAB and TTAB analytics are always at your fingertips.

API

Docket Alarm offers a powerful API (application programming interface) to developers that want to integrate case filings into their apps.

LAW FIRMS

Build custom dashboards for your attorneys and clients with live data direct from the court.

Automate many repetitive legal tasks like conflict checks, document management, and marketing.

FINANCIAL INSTITUTIONS

Litigation and bankruptcy checks for companies and debtors.

E-DISCOVERY AND LEGAL VENDORS

Sync your system to PACER to automate legal marketing.