

EXHIBIT 1

CQG EXHIBIT 1018



US006766304B2

(12) **United States Patent**
Kemp, II et al.

(10) **Patent No.:** **US 6,766,304 B2**
(45) **Date of Patent:** **Jul. 20, 2004**

(54) **CLICK BASED TRADING WITH INTUITIVE GRID DISPLAY OF MARKET DEPTH**

5,774,877 A 6/1998 Patterson, Jr. et al.
5,793,301 A 8/1998 Patterson, Jr. et al.

(75) Inventors: **Gary Allan Kemp, II**, Winnetka, IL (US); **Jens-Uwe Schluetter**, Evanston, IL (US); **Harris Brumfield**, Chicago, IL (US)

(List continued on next page.)

(73) Assignee: **Trading Technologies International, Inc.**, Chicago, IL (US)

FOREIGN PATENT DOCUMENTS

(*) Notice: Subject to any disclaimer, the term of this patent is extended or adjusted under 35 U.S.C. 154(b) by 544 days.

| | | |
|----|-------------|---------|
| WO | WO 98/49639 | 11/1998 |
| WO | WO 99/19821 | 4/1999 |
| WO | WO 99/30259 | 6/1999 |
| WO | WO 99/53424 | 10/1999 |
| WO | WO 00/52619 | 9/2000 |
| WO | WO 00/62187 | 10/2000 |
| WO | WO 00/65510 | 11/2000 |
| WO | WO 01/16830 | 3/2001 |
| WO | WO 01/16852 | 3/2001 |
| WO | WO 01/22315 | 3/2001 |
| WO | WO 01/88808 | 11/2001 |

(21) Appl. No.: **09/894,637**

(22) Filed: **Jun. 27, 2001**

(65) **Prior Publication Data**

US 2002/0059129 A1 May 16, 2002

Related U.S. Application Data

(62) Division of application No. 09/590,692, filed on Jun. 9, 2000.

(60) Provisional application No. 60/186,322, filed on Mar. 2, 2000.

(51) **Int. Cl.**⁷ **G06F 17/60**

(52) **U.S. Cl.** **705/37; 705/36; 705/35**

(58) **Field of Search** **705/35, 36, 37; 345/814**

(56) **References Cited**

U.S. PATENT DOCUMENTS

| | | | |
|-------------|---------|------------------|---------|
| 4,674,044 A | 6/1987 | Kalmus et al. | 364/408 |
| 4,750,135 A | 6/1988 | Boilen | 364/514 |
| 5,038,284 A | 8/1991 | Kramer | |
| 5,077,665 A | 12/1991 | Silverman et al. | 364/408 |
| 5,136,501 A | 8/1992 | Silverman et al. | 364/408 |
| 5,270,922 A | 12/1993 | Higgins | 364/408 |
| 5,297,031 A | 3/1994 | Guterman et al. | |
| 5,297,032 A | 3/1994 | Trojan et al. | |
| 5,689,651 A | 11/1997 | Lozman | |

OTHER PUBLICATIONS

Patsystems News Release, Patsystems Launches J Trader, Nov. 6, 2001.*

www.tradingtechnologies.com/products/xtrade_full.html (viewed May 22, 2001) <Jun. 9, 2000.

Kharouf, A trading room with a view, *Futures*, 27, 11—Nov. 1998.

USPTO Presentation, NASDAQ, Nov. 8, 2001, enclosed pp. 1—13.

Primary Examiner—Richard Weisberger

(74) *Attorney, Agent, or Firm*—Foley & Lardner

(57) **ABSTRACT**

A method and system for reducing the time it takes for a trader to place a trade when electronically trading on an exchange, thus increasing the likelihood that the trader will have orders filled at desirable prices and quantities. The "Mercury" display and trading method of the present invention ensure fast and accurate execution of trades by displaying market depth on a vertical or horizontal plane, which fluctuates logically up or down, left or right across the plane as the market prices fluctuates. This allows the trader to trade quickly and efficiently.

40 Claims, 6 Drawing Sheets

| SYCOM FBBL DEC98 | | | | | |
|------------------|----------|------|------|----|-----|
| E/W | 10:46:44 | BidQ | AskQ | Pr | LTO |
| 1009 | L 3 | 104 | 99 | | |
| 1010 | R 5 | 24 | 98 | | |
| 1011 | 720 | 33 | 97 | | |
| 1012 | X 10 | 115 | 96 | | |
| 1013 | 0 | 32 | 95 | | |
| 1014 | 10 1H | 27 | 94 | | |
| | 50 3H | 63 | 93 | | |
| 1007 | 1K 5H | 45 | 92 | | |
| | CLR | 28 | 91 | | |
| 1015 | X 10 | 20 | 90 | 10 | |
| 1016 | 17 | 18 | 89 | | |
| | CXL | 97 | 88 | | |
| 1008 | W 15 | 30 | 87 | | |
| | W 13 | 43 | 86 | | |
| 1017 | NET 0 | 110 | 85 | | |
| 1018 | NET REAL | 23 | 84 | | |
| 1019 | | 31 | 83 | | |
| 1021 | | 125 | 82 | | |
| | | 21 | 81 | | |

U.S. PATENT DOCUMENTS

| | | | | | |
|-------------|---------|------------------------------|-----------------|---------|------------------|
| 5,797,002 A | 8/1998 | Patterson, Jr. et al. | 6,131,087 A | 10/2000 | Luke et al. |
| 5,845,266 A | 12/1998 | Lupien et al. | 6,134,535 A | 10/2000 | Belzberg |
| 5,915,245 A | 6/1999 | Patterson, Jr. et al. | 6,195,647 B1 | 2/2001 | Martyn et al. |
| 5,924,082 A | 7/1999 | Silverman et al. | 6,272,474 B1 | 8/2001 | Garcia |
| 5,924,083 A | 7/1999 | Silverman et al. 705/37 | 6,278,982 B1 | 8/2001 | Korhammer et al. |
| 5,963,923 A | 10/1999 | Garber 705/37 | 6,282,521 B1 | 8/2001 | Howorka |
| 6,012,046 A | 1/2000 | Lupien et al. | 6,408,282 B1 | 6/2002 | Buist |
| 6,014,643 A | 1/2000 | Minton 705/37 | 2002/0023038 A1 | 2/2002 | Fritsch et al. |
| 6,098,051 A | 8/2000 | Lupien et al. | 2002/0055899 A1 | 5/2002 | Williams |

* cited by examiner

FIG. 1

CONNECTION TO MULTIPLE EXCHANGES

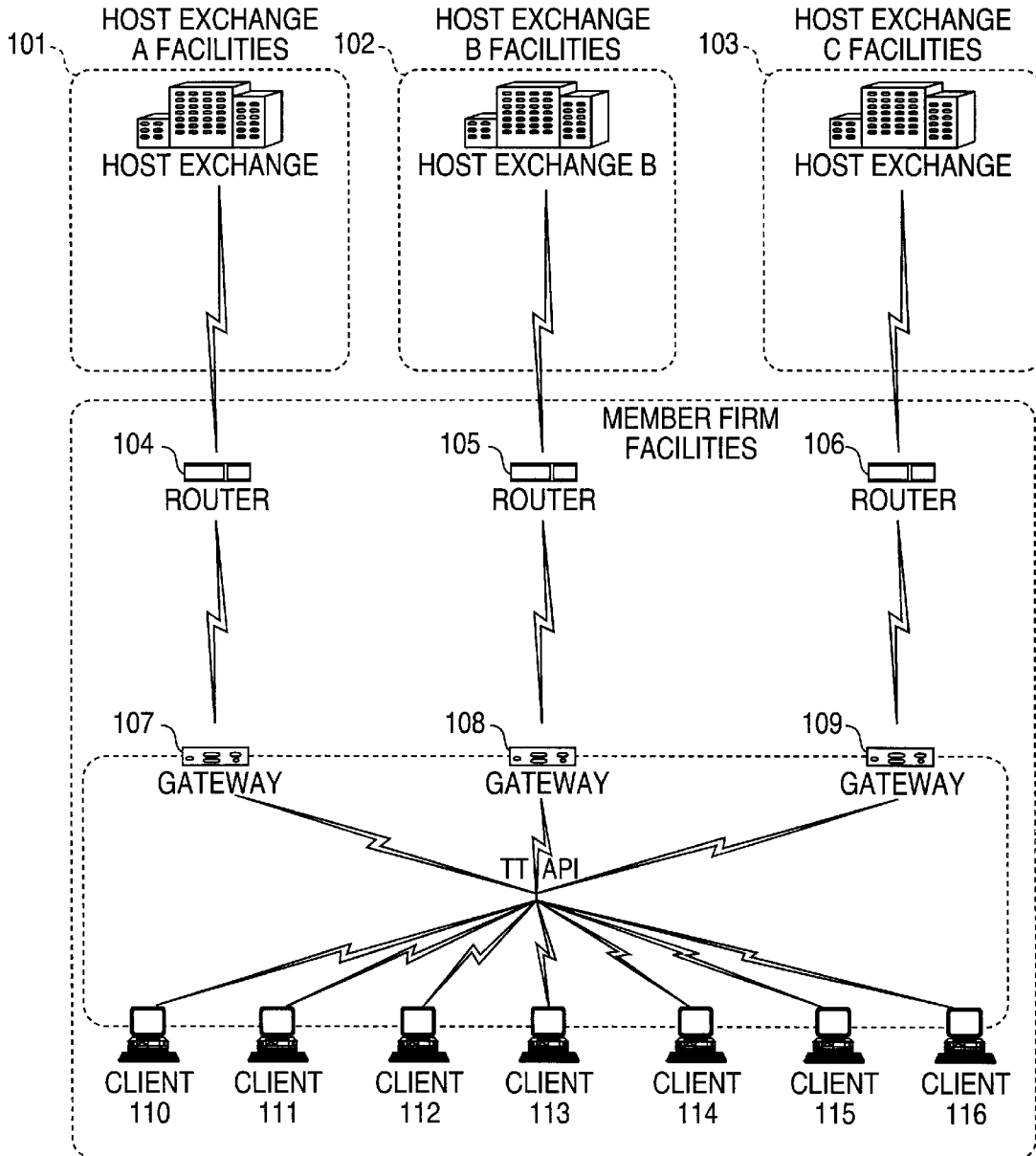


FIG. 2

| | 201 | 202 | 203 | 204 | 205 | | | | |
|---|----------|-------|--------|--------|--------|--------|---------|---------|-------|
| | Contract | Depth | BidQty | BidPrc | AskPrc | AskQty | LastPrc | LastQty | Total |
| 1 | CDHO | • | 785 | 7626 | 7627 | 21 | 7627 | 489 | 8230 |
| 2 | | | 626 | 7625 | 7629 | 815 | | | |
| 3 | | | 500 | 7624 | 7630 | 600 | | | |
| 4 | | | 500 | 7623 | 7631 | 2456 | | | |
| 5 | | | 200 | 7622 | 7632 | 800 | | | |

Explore Litigation Insights

Docket Alarm provides insights to develop a more informed litigation strategy and the peace of mind of knowing you're on top of things.

Real-Time Litigation Alerts



Keep your litigation team up-to-date with **real-time alerts** and advanced team management tools built for the enterprise, all while greatly reducing PACER spend.

Our comprehensive service means we can handle Federal, State, and Administrative courts across the country.

Advanced Docket Research



With over 230 million records, Docket Alarm's cloud-native docket research platform finds what other services can't. Coverage includes Federal, State, plus PTAB, TTAB, ITC and NLRB decisions, all in one place.

Identify arguments that have been successful in the past with full text, pinpoint searching. Link to case law cited within any court document via Fastcase.

Analytics At Your Fingertips



Learn what happened the last time a particular judge, opposing counsel or company faced cases similar to yours.

Advanced out-of-the-box PTAB and TTAB analytics are always at your fingertips.

API

Docket Alarm offers a powerful API (application programming interface) to developers that want to integrate case filings into their apps.

LAW FIRMS

Build custom dashboards for your attorneys and clients with live data direct from the court.

Automate many repetitive legal tasks like conflict checks, document management, and marketing.

FINANCIAL INSTITUTIONS

Litigation and bankruptcy checks for companies and debtors.

E-DISCOVERY AND LEGAL VENDORS

Sync your system to PACER to automate legal marketing.