



US005530235A

# United States Patent [19]

[11] Patent Number: **5,530,235**

Stefik et al.

[45] Date of Patent: **Jun. 25, 1996**

[54] INTERACTIVE CONTENTS REVEALING STORAGE DEVICE

5,183,404 2/1993 Aldous et al. .... 439/55

[75] Inventors: **Mark J. Stefik**, Woodside; **Daniel G. Bobrow**, Palo Alto; **Stuart K. Card**, Los Altos; **Michalene M. Casey**, Morgan Hill; **Richard J. Goldstein**, San Francisco, all of Calif.; **Michael G. Lamming**, Cambridge, England; **Jock D. Mackinlay**, San Jose, Calif.; **Roy Want**, Mountain View, Calif.; **George G. Robertson**, Foster City, Calif.; **Mark D. Weiser**; **Daniel M. Russell**, both of Palo Alto, Calif.

[73] Assignee: **Xerox Corporation**, Stamford, Conn.

[21] Appl. No.: **389,670**

[22] Filed: **Feb. 16, 1995**

[51] Int. Cl.<sup>6</sup> ..... **G06K 19/06**

[52] U.S. Cl. .... **235/492; 235/380; 235/487**

[58] Field of Search ..... **235/380, 487, 235/492**

### [56] References Cited

#### U.S. PATENT DOCUMENTS

4,614,861 9/1986 Paulov ..... 235/380  
4,868,376 9/1989 Lessin et al. .... 235/492

### OTHER PUBLICATIONS

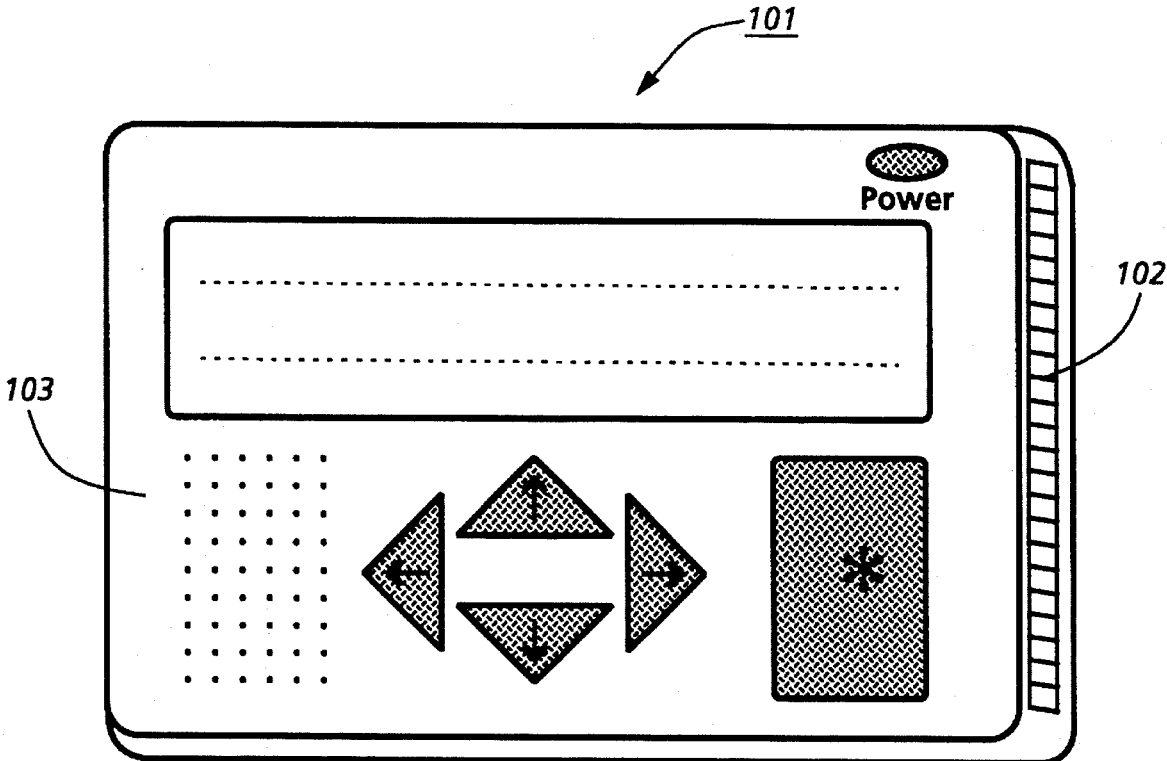
Robinson, E. J., "Redefining Mobile Computing," *PC Computing*, Jul., 1993, pp. 238-240, 247-248, and 252.  
Abadi, M., Burrows, M., Kaufman, C., and Lampson, B., "Authentication and Delegation with Smart-cards," *Research Report DEC Systems Research Center*, 1990.

*Primary Examiner*—Harold Pitts  
*Attorney, Agent, or Firm*—Richard B. Domingo

### [57] ABSTRACT

A Document Card (DocuCard) for storing documents and which is content revealing. The DocuCard is a transportable unit having a nonvolatile storage means for storing information in a digital form, a control processor for processing user initiated functions; an I/O port for interfacing to external devices for reading and writing digital information, and a user interface for allowing a user to directly interact with the DocuCard. The user interface on the DocuCard includes a display for displaying lists of functions and documents and information responsive to user invoked functions and a user input portion for allowing a user to traverse the lists of functions and documents, as well as information generated responsive to an invoked function. The control processor of the present invention include features for controlling access to documents stored therein.

**23 Claims, 10 Drawing Sheets**



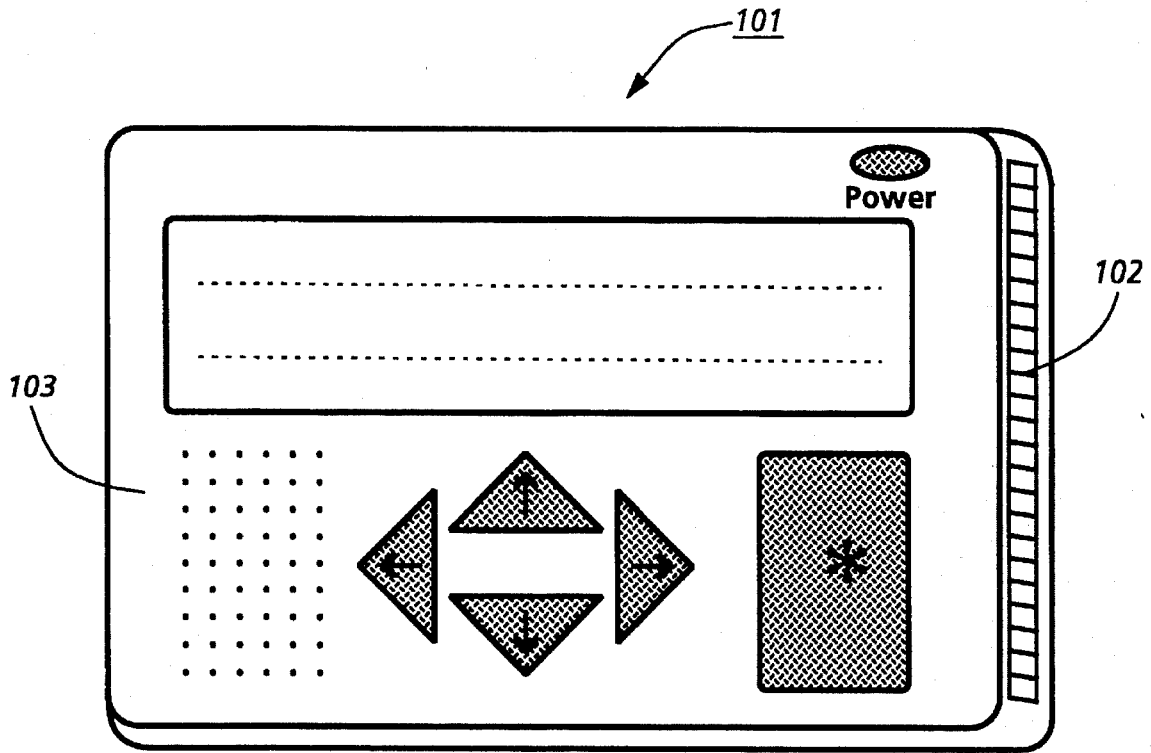


Fig. 1

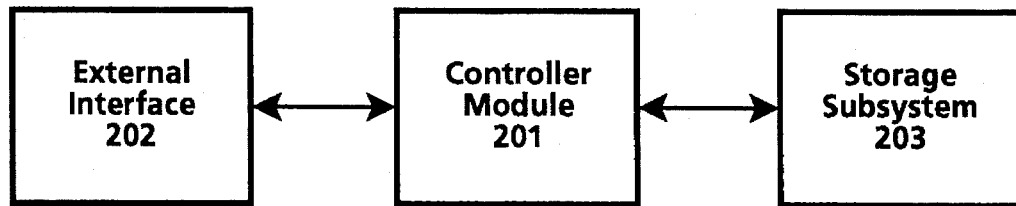
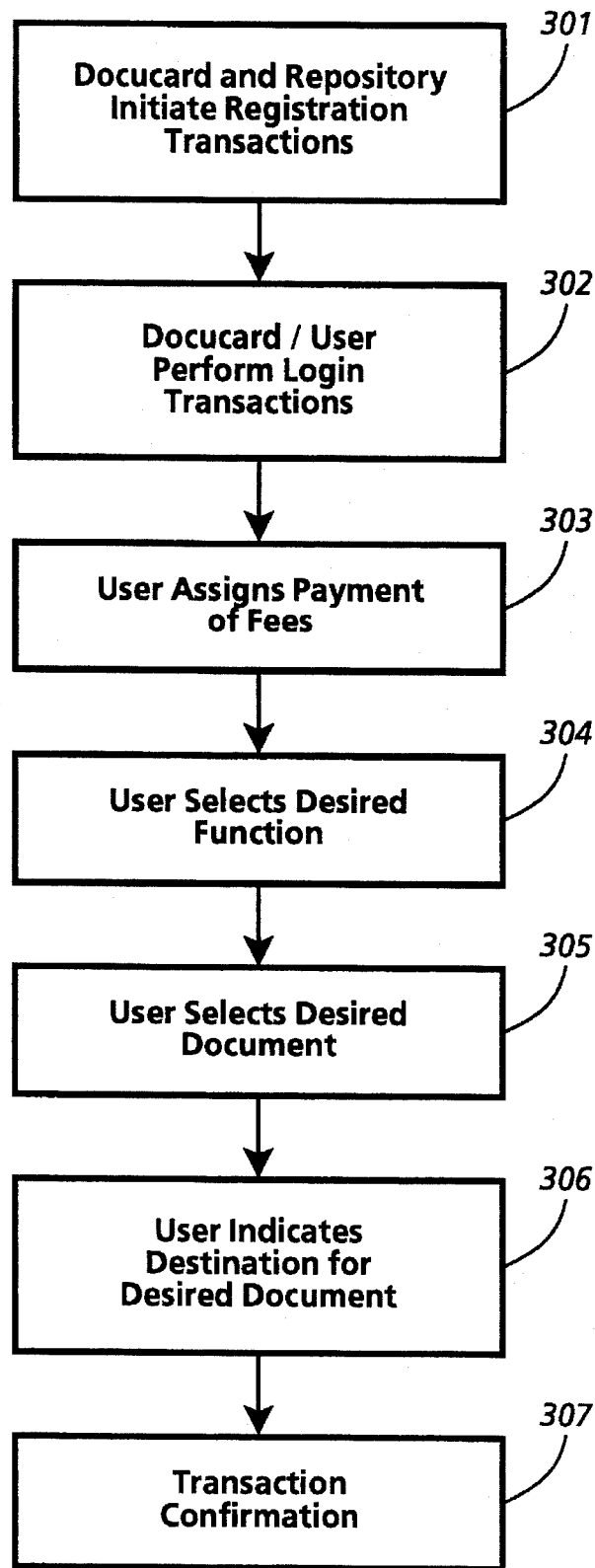
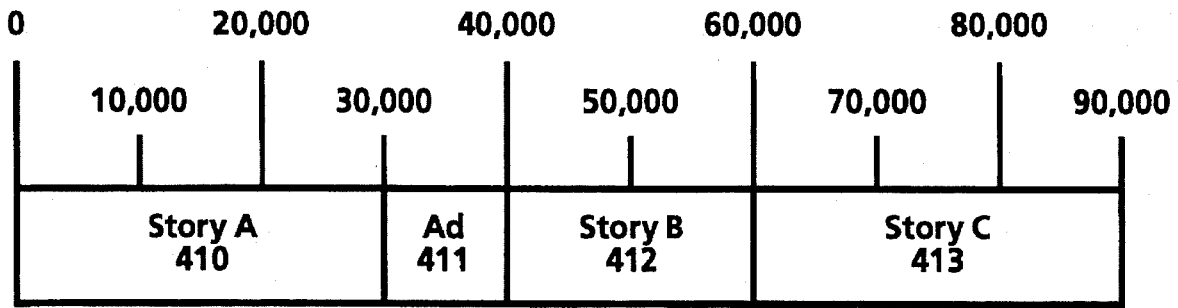


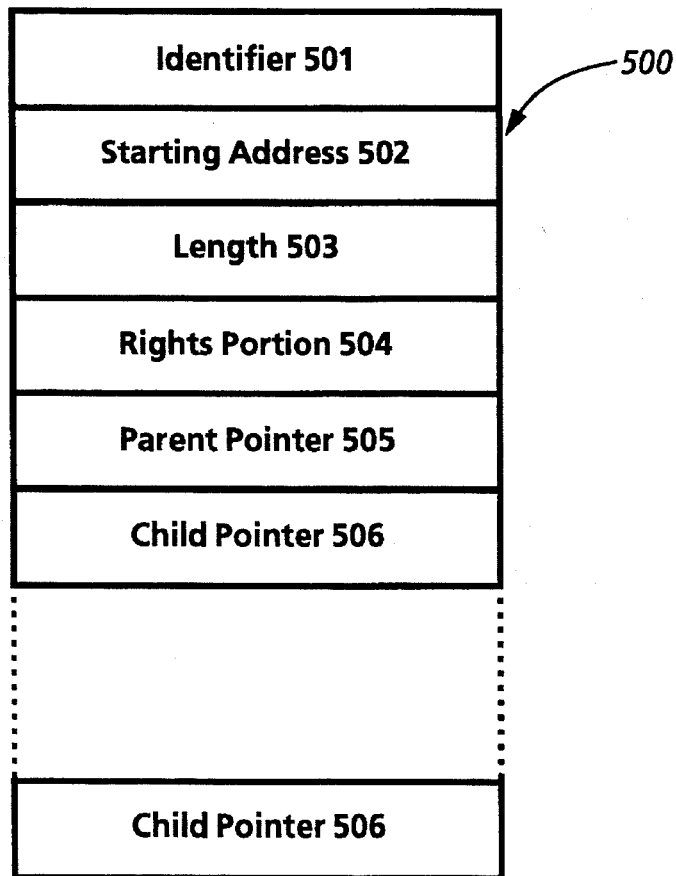
Fig. 2



**Fig. 3**



**Fig. 4**



**Fig. 5a**

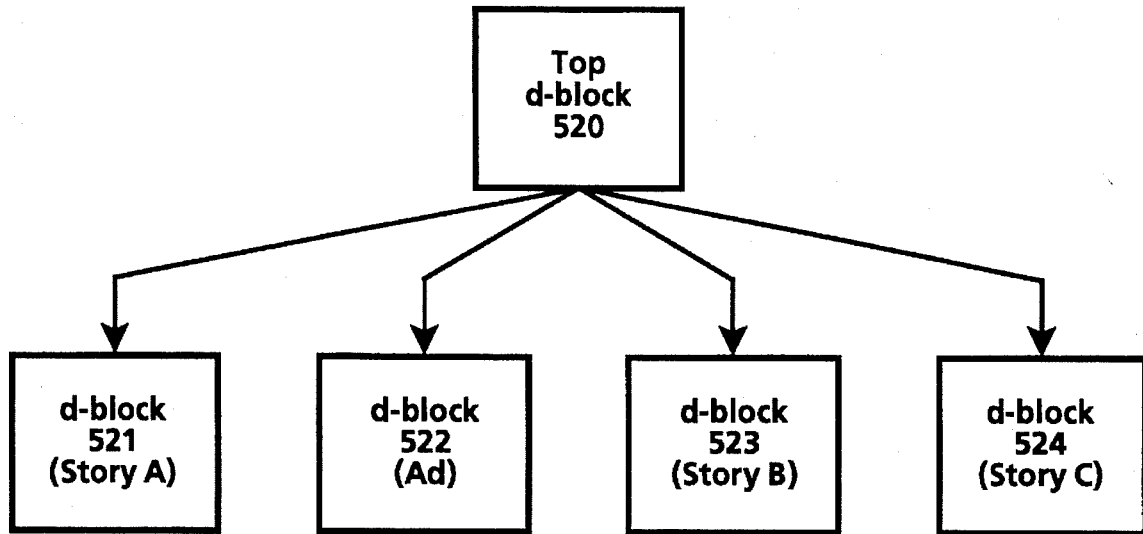


Fig. 5b

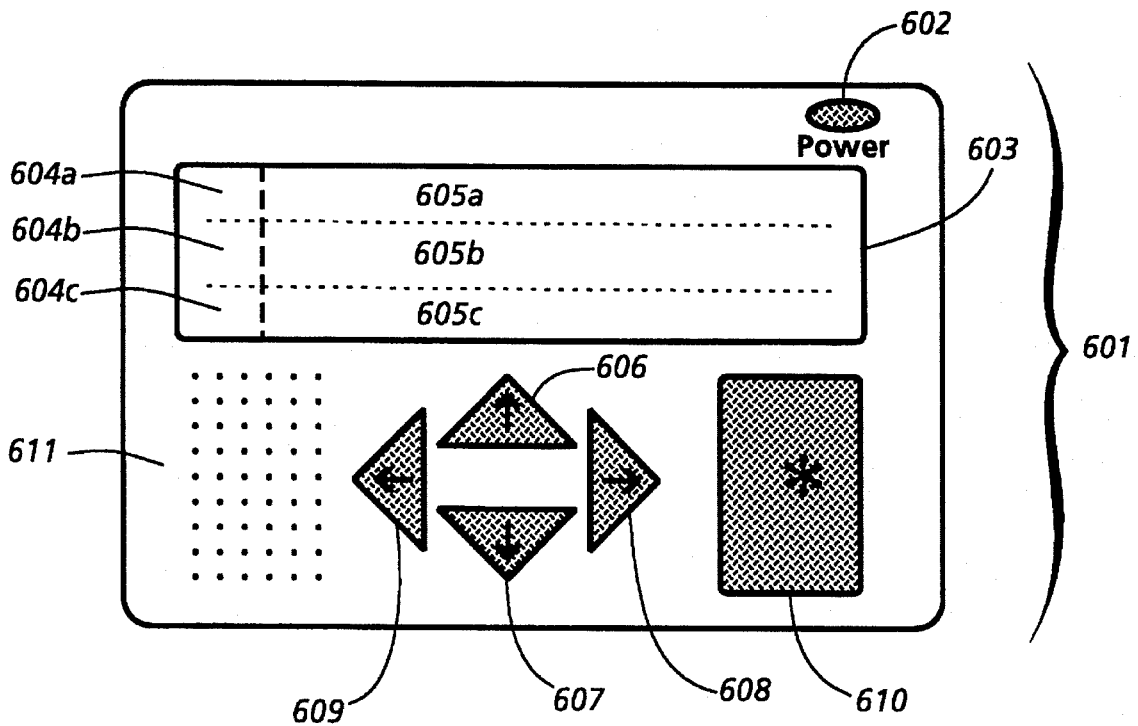


Fig. 6

# Explore Litigation Insights

Docket Alarm provides insights to develop a more informed litigation strategy and the peace of mind of knowing you're on top of things.

## Real-Time Litigation Alerts



Keep your litigation team up-to-date with **real-time alerts** and advanced team management tools built for the enterprise, all while greatly reducing PACER spend.

Our comprehensive service means we can handle Federal, State, and Administrative courts across the country.

## Advanced Docket Research



With over 230 million records, Docket Alarm's cloud-native docket research platform finds what other services can't. Coverage includes Federal, State, plus PTAB, TTAB, ITC and NLRB decisions, all in one place.

Identify arguments that have been successful in the past with full text, pinpoint searching. Link to case law cited within any court document via Fastcase.

## Analytics At Your Fingertips



Learn what happened the last time a particular judge, opposing counsel or company faced cases similar to yours.

Advanced out-of-the-box PTAB and TTAB analytics are always at your fingertips.

## API

Docket Alarm offers a powerful API (application programming interface) to developers that want to integrate case filings into their apps.

## LAW FIRMS

Build custom dashboards for your attorneys and clients with live data direct from the court.

Automate many repetitive legal tasks like conflict checks, document management, and marketing.

## FINANCIAL INSTITUTIONS

Litigation and bankruptcy checks for companies and debtors.

## E-DISCOVERY AND LEGAL VENDORS

Sync your system to PACER to automate legal marketing.