



US005103392A

United States Patent [19]

[11] Patent Number: **5,103,392**

Mori

[45] Date of Patent: **Apr. 7, 1992**

[54] **SYSTEM FOR STORING HISTORY OF USE OF PROGRAMS INCLUDING USER CREDIT DATA AND HAVING ACCESS BY THE PROPRIETOR**

4,590,557	5/1986	Lillie	364/200
4,593,376	6/1986	Volk	364/900
4,658,093	4/1987	Hellman	380/4
4,683,553	7/1987	Mollier	364/900

[75] Inventor: **Ryoichi Mori, Tokyo, Japan**
 [73] Assignee: **Fujitsu Limited, Kawasaki, Japan**
 [21] Appl. No.: **622,196**
 [22] Filed: **Dec. 5, 1990**

FOREIGN PATENT DOCUMENTS

0116327 1/1984 European Pat. Off. .

OTHER PUBLICATIONS

Lexis Handbook, Mead Data Corp., copyrighted 1980.
 Lexis/Nexis-Quick Reference, copyrighted 1984.
 "Computer Assisted Prior Art Searching", by Becker & Bolton, Jrnl of Patent Office Society, Oct. 1983, vol. 65, No. 10 pp. 536-585.
 "Phone Home Video, The Game Connection", by Jacobs, Video Review, Sep. 1983, pp. 33, 34, 120.

Primary Examiner—Lawrence E. Anderson
Attorney, Agent, or Firm—Staas & Halsey

Related U.S. Application Data

[63] Continuation of Ser. No. 281,882, Dec. 8, 1988, abandoned, which is a continuation of Ser. No. 129,867, Dec. 4, 1987, abandoned, and a continuation of Ser. No. 657,794, Oct. 4, 1984, abandoned.

Foreign Application Priority Data

Oct. 5, 1983	[JP]	Japan	58-186100
Mar. 12, 1984	[JP]	Japan	59-46923
Mar. 12, 1984	[JP]	Japan	59-46924

[51] Int. Cl.³ **G06F 9/06**
 [52] U.S. Cl. **395/725; 364/284.4; 364/286.5; 364/DIG. 1**

[58] Field of Search ... 364/200 MS File, 900 MS File

References Cited

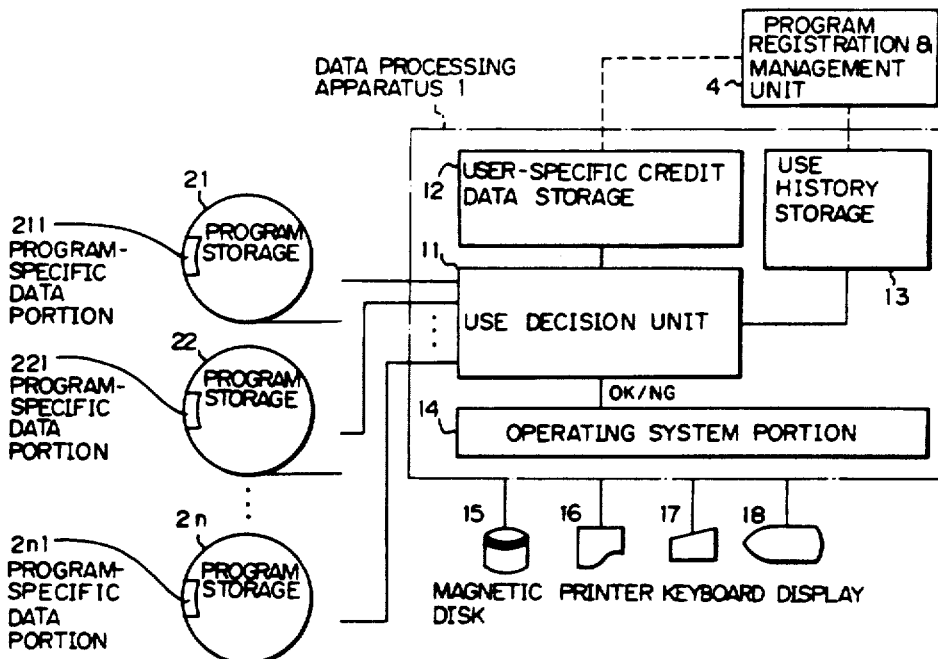
U.S. PATENT DOCUMENTS

3,719,927	3/1973	Michels et al.	364/406
3,956,615	5/1976	Anderson	235/381
4,358,672	11/1982	Hyatt et al.	235/380
4,433,207	2/1984	Best	178/22.09
4,453,074	6/1984	Weinstein	235/380
4,484,217	11/1984	Block	358/84
4,553,252	11/1985	Egendorf	364/300

[57] ABSTRACT

A system for storing data on the history of use of programs consisting of a data processing apparatus and a program storage unit, such as a magnetic tape, which stores program-specific data. The data processing apparatus includes a user-specific credit data storage portion, a use decision portion, and a program use history storage portion which can store use history data derived from the program-specific data from the program storage unit or the user-specific credit data from the user-specific credit data storage portion. The program use history is accessible to proprietors of the programs so that charges can be based on actual use of the programs.

3 Claims, 10 Drawing Sheets



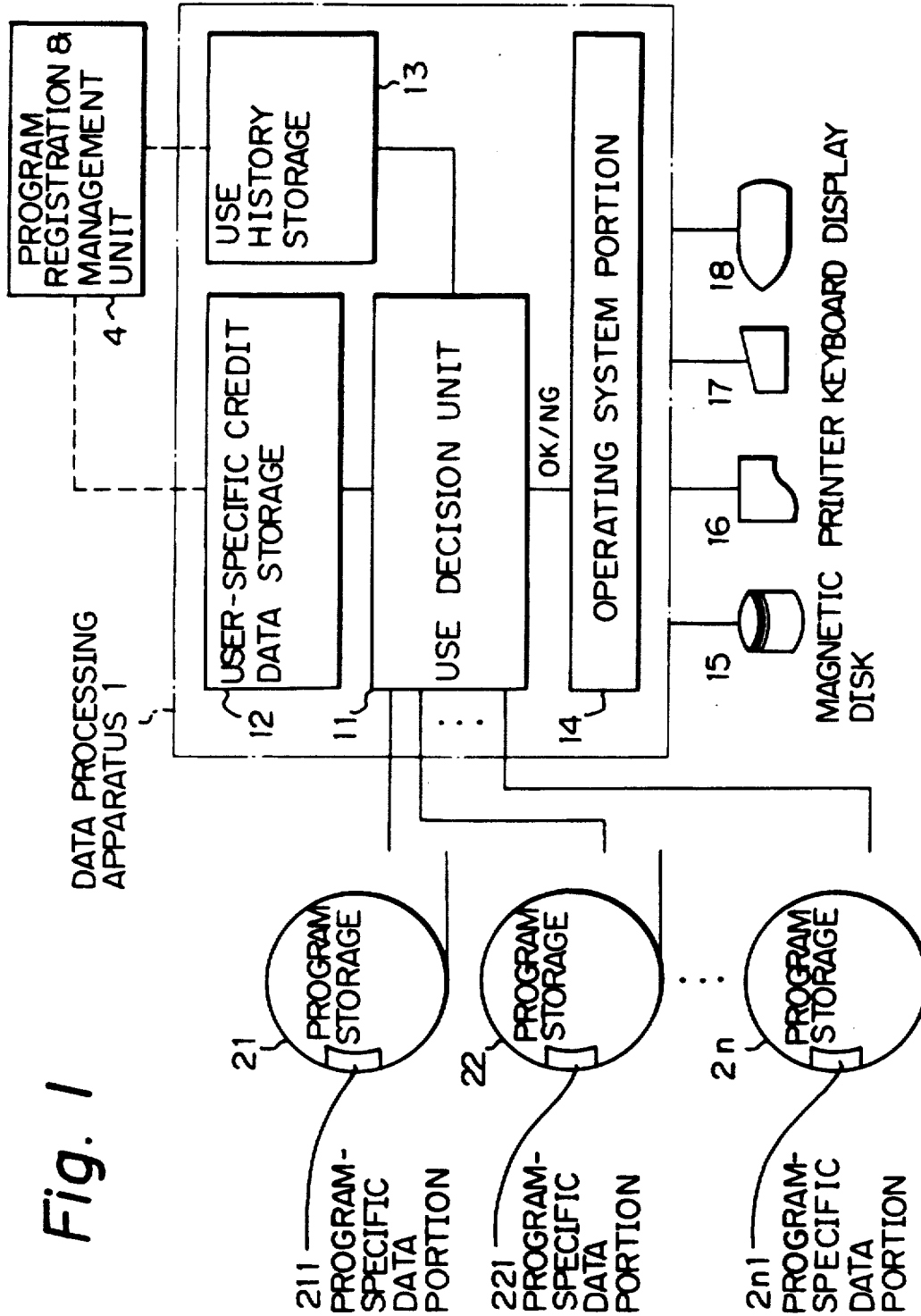


Fig. 1

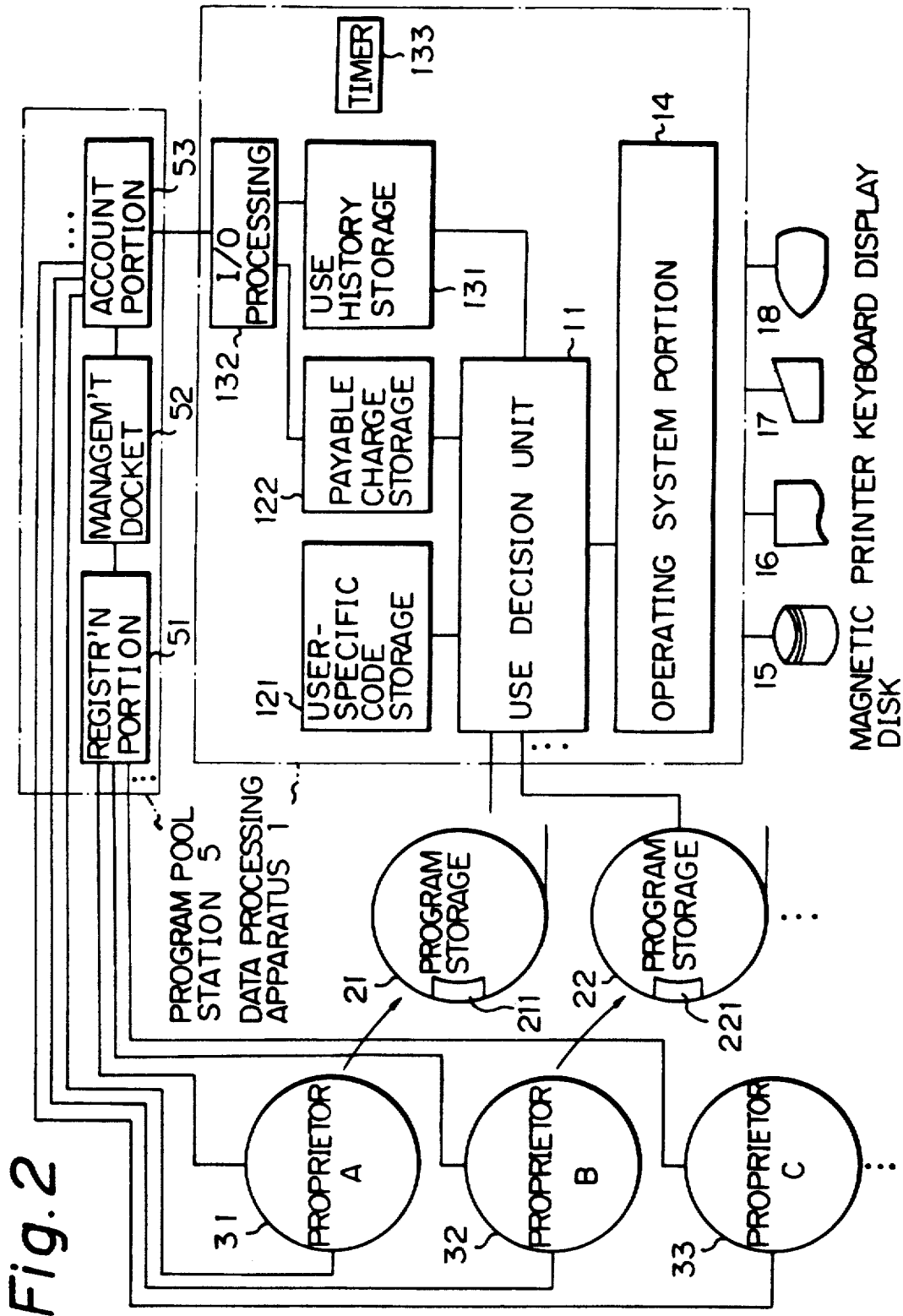


Fig. 3A

Fig. 3

Fig.3A	Fig.3B
Fig.3C	Fig.3D

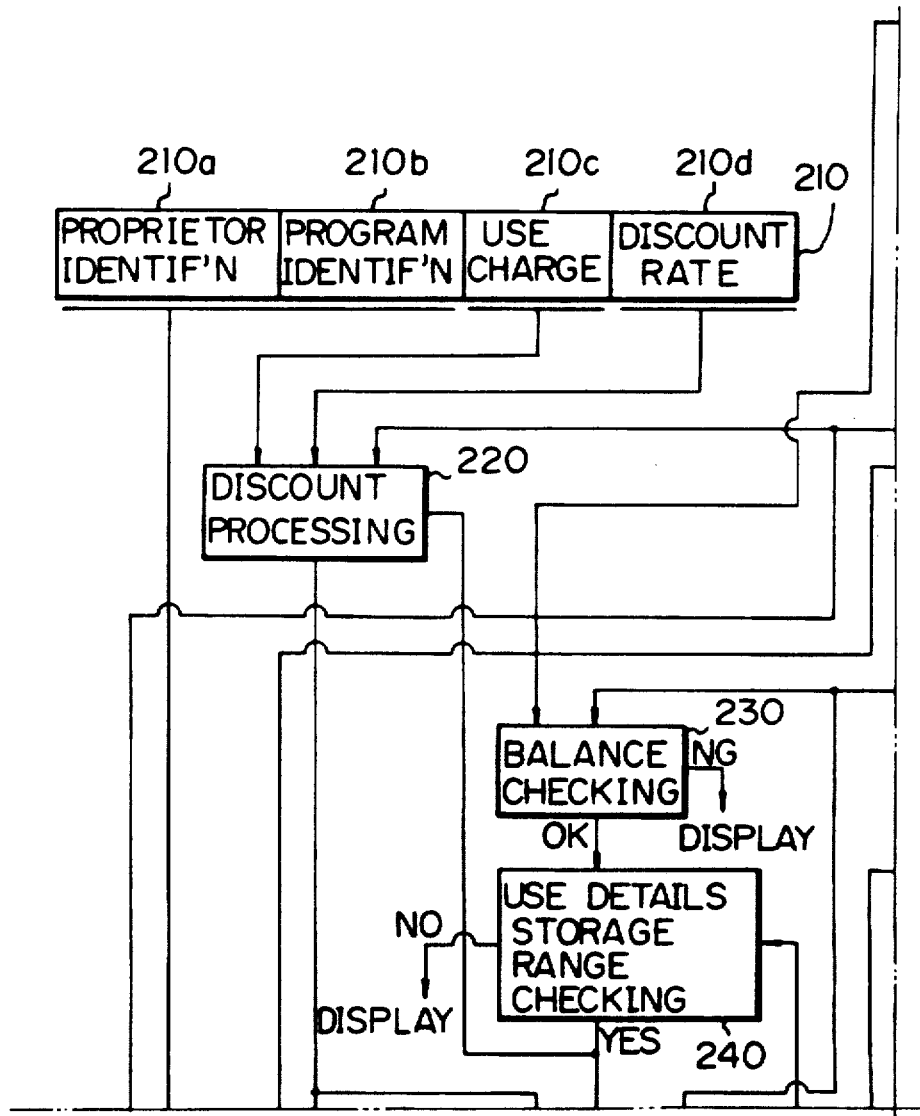
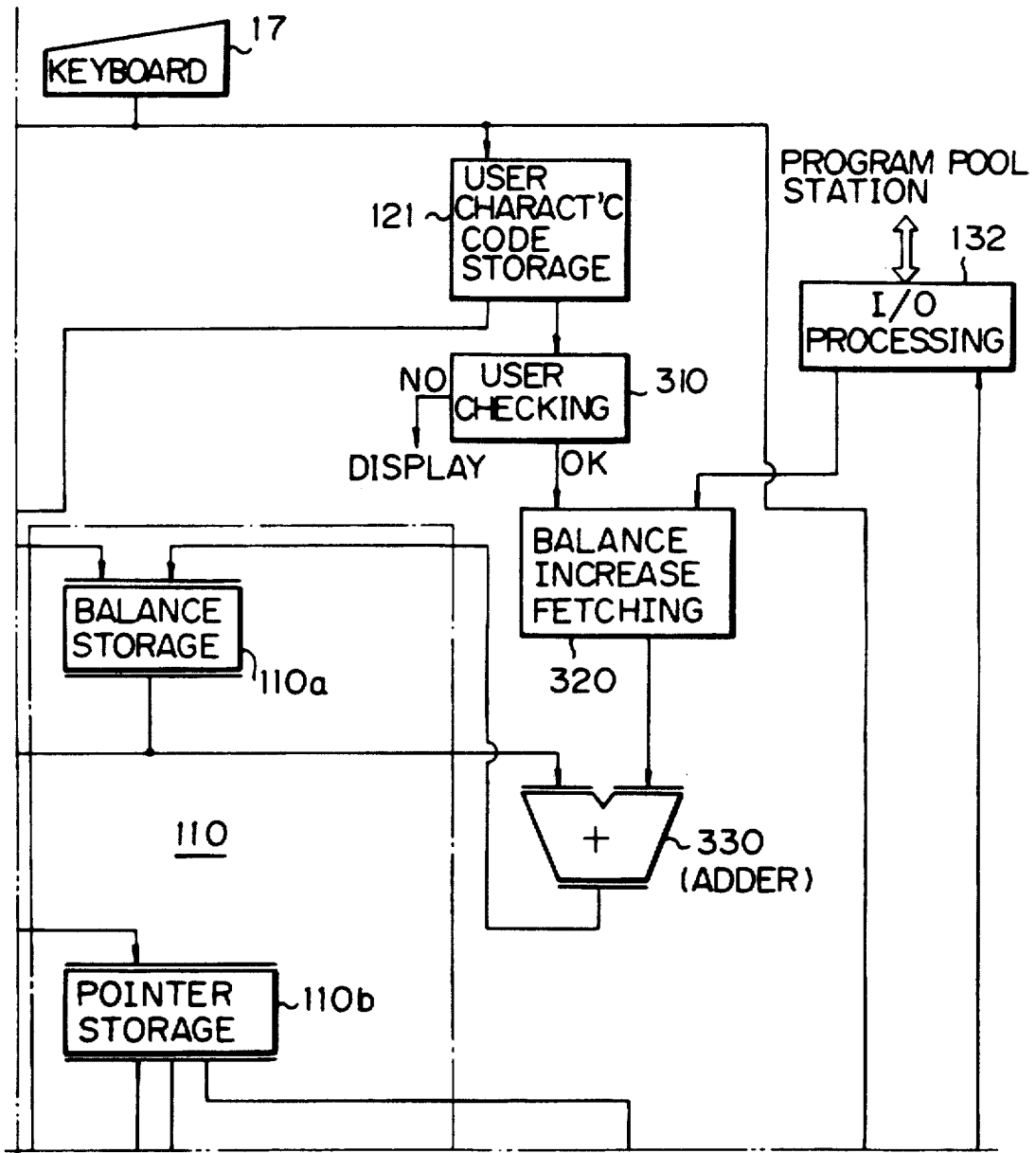


Fig. 3B



Explore Litigation Insights

Docket Alarm provides insights to develop a more informed litigation strategy and the peace of mind of knowing you're on top of things.

Real-Time Litigation Alerts



Keep your litigation team up-to-date with **real-time alerts** and advanced team management tools built for the enterprise, all while greatly reducing PACER spend.

Our comprehensive service means we can handle Federal, State, and Administrative courts across the country.

Advanced Docket Research



With over 230 million records, Docket Alarm's cloud-native docket research platform finds what other services can't. Coverage includes Federal, State, plus PTAB, TTAB, ITC and NLRB decisions, all in one place.

Identify arguments that have been successful in the past with full text, pinpoint searching. Link to case law cited within any court document via Fastcase.

Analytics At Your Fingertips



Learn what happened the last time a particular judge, opposing counsel or company faced cases similar to yours.

Advanced out-of-the-box PTAB and TTAB analytics are always at your fingertips.

API

Docket Alarm offers a powerful API (application programming interface) to developers that want to integrate case filings into their apps.

LAW FIRMS

Build custom dashboards for your attorneys and clients with live data direct from the court.

Automate many repetitive legal tasks like conflict checks, document management, and marketing.

FINANCIAL INSTITUTIONS

Litigation and bankruptcy checks for companies and debtors.

E-DISCOVERY AND LEGAL VENDORS

Sync your system to PACER to automate legal marketing.