



US005761651A

United States Patent [19]

[11] Patent Number: **5,761,651**

Hasebe et al.

[45] Date of Patent: **Jun. 2, 1998**

- [54] SOFTWARE CHARGING SYSTEM AND SOFTWARE DATA UTILIZATION PERMITTING DEVICE
- [75] Inventors: **Takayuki Hasebe; Naoya Torii; Noboru Iwayama; Masahiko Takenaka; Masahiro Matsuda**, all of Kawasaki, Japan
- [73] Assignee: **Fujitsu Limited**, Kawasaki, Japan
- [21] Appl. No.: **490,049**
- [22] Filed: **Jun. 13, 1995**
- [30] Foreign Application Priority Data
Aug. 10, 1994 [JP] Japan 6-188667
- [51] Int. Cl.⁶ **G06F 17/60**
- [52] U.S. Cl. **705/400; 705/30; 705/32**
- [58] Field of Search 194/215, 216, 194/217; 222/2; 364/400, 401, 406, 464.01, 464.1; 380/4; 395/230, 232

4,937,863	6/1990	Nashua et al.	380/4
4,949,257	8/1990	Orbach	364/401
4,999,806	3/1991	Chernow et al.	380/4 X
5,006,849	4/1991	Baarman et al.	341/95
5,008,814	4/1991	Mathur	371/19 X
5,014,234	5/1991	Edwards, Jr.	395/186
5,016,009	5/1991	Whiting et al.	341/67
5,051,822	9/1991	Rhoades	358/86
5,056,009	10/1991	Mizuta	393/490
5,103,392	4/1992	Mori	380/4
5,103,476	4/1992	Waite et al.	380/4
5,166,886	11/1992	Molnar et al.	364/479
5,181,107	1/1993	Rhoades	358/86
5,199,066	3/1993	Logan	380/4
5,214,697	5/1993	Saito	380/4
5,222,134	6/1993	Waite et al.	380/4
5,245,330	9/1993	Wassink	340/825.34
5,267,171	11/1993	Suzuki et al.	364/479
5,367,704	11/1994	Hasuo et al.	395/800
5,386,369	1/1995	Christiano	364/464.01

[56] References Cited

U.S. PATENT DOCUMENTS

4,247,106	1/1981	Jeffers et al.	273/856
4,439,670	3/1984	Basset et al.	235/382
4,446,519	5/1984	Thomas	395/491
4,484,217	11/1984	Block et al.	358/84
4,558,176	12/1985	Arnold et al.	178/22.08
4,590,557	5/1986	Lillie	395/700
4,593,376	6/1986	Volk	364/401 R
4,646,234	2/1987	Tolman et al.	380/4 X
4,649,510	3/1987	Schmidt	380/4
4,654,799	3/1987	Ogaki et al.	364/479
4,658,093	4/1987	Hellman	380/25
4,672,554	6/1987	Ogaki	364/479
4,674,055	6/1987	Ogaki et al.	364/479
4,740,890	4/1988	William	380/4 X
4,780,905	10/1988	Cruts et al.	380/44
4,787,050	11/1988	Suzuki	364/479
4,796,181	1/1989	Wiedemer	364/406
4,816,653	3/1989	Anderl et al.	235/380
4,816,654	3/1989	Anderl et al.	235/380
4,817,140	3/1989	Chandra et al.	380/4
4,864,516	9/1989	Gaither et al.	395/153
4,879,645	11/1989	Tamada et al.	235/380 X

FOREIGN PATENT DOCUMENTS

57-127249	8/1982	Japan .
5-89363	4/1993	Japan .
5-266575	10/1993	Japan .
5-298058	11/1993	Japan .
6-95871	4/1994	Japan .

Primary Examiner—Edward R. Cosimano
Attorney, Agent, or Firm—Staas & Halsey

[57] ABSTRACT

A software charging system includes a utilization permitting device for giving permission to use a software storing medium storing ciphered programs or data (software); and an authorization center capable of communicating with the utilization permitting device for setting a utilizable amount, totalling utilization amounts and charging a user. The utilization permitting device includes: a utilization permission processing part having a clock for obtaining date and time data, and having a date and time data storing unit for storing obtained date and time data until obtaining next date and time data; and a utilization amount managing part for calculating a software utilization amount of an end user. A software utilization amount is managed based on the number of days at the utilization permission processing part.

24 Claims, 11 Drawing Sheets

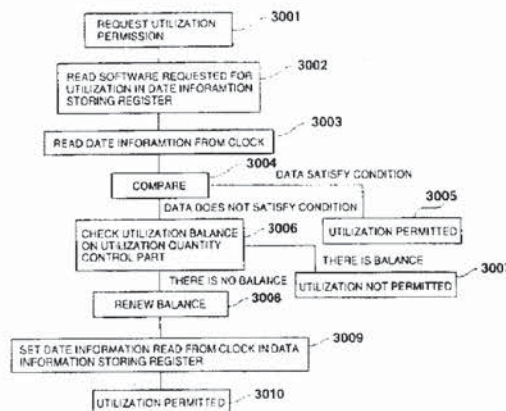


FIG. 1

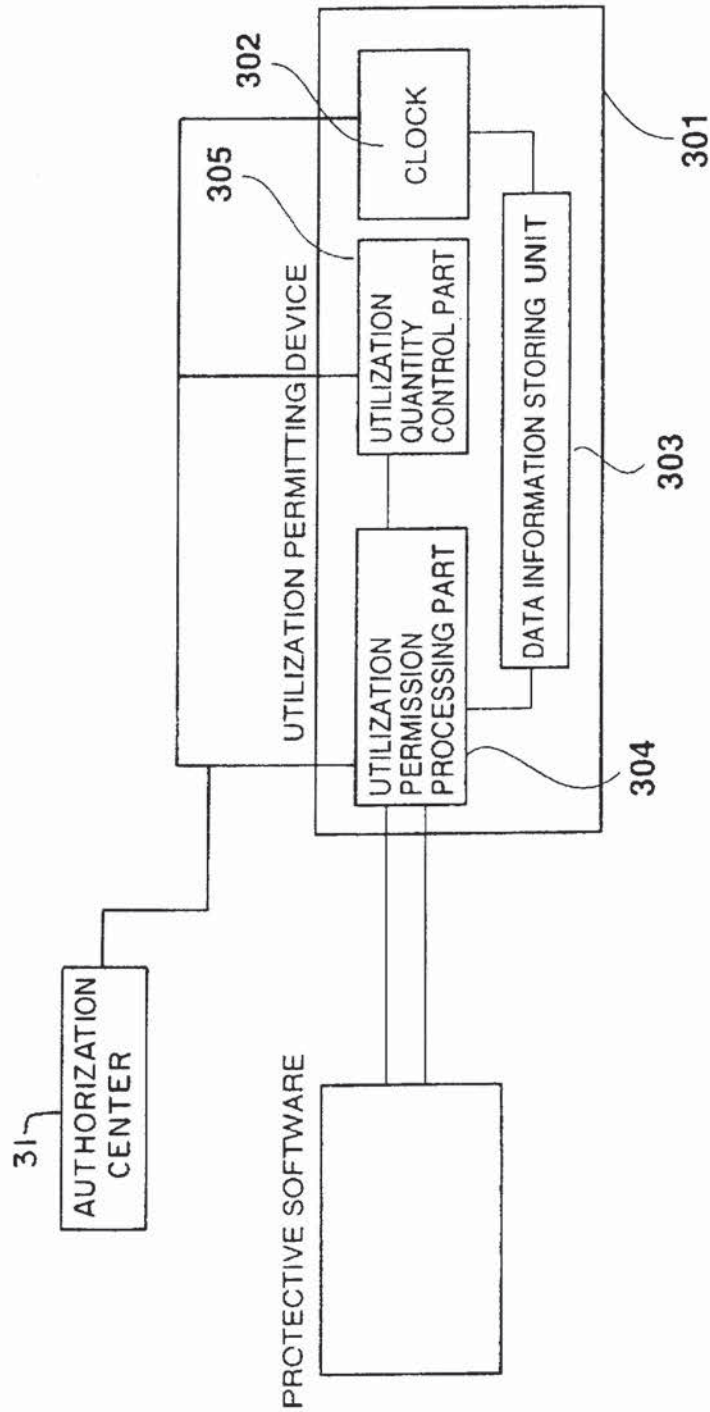


FIG. 2

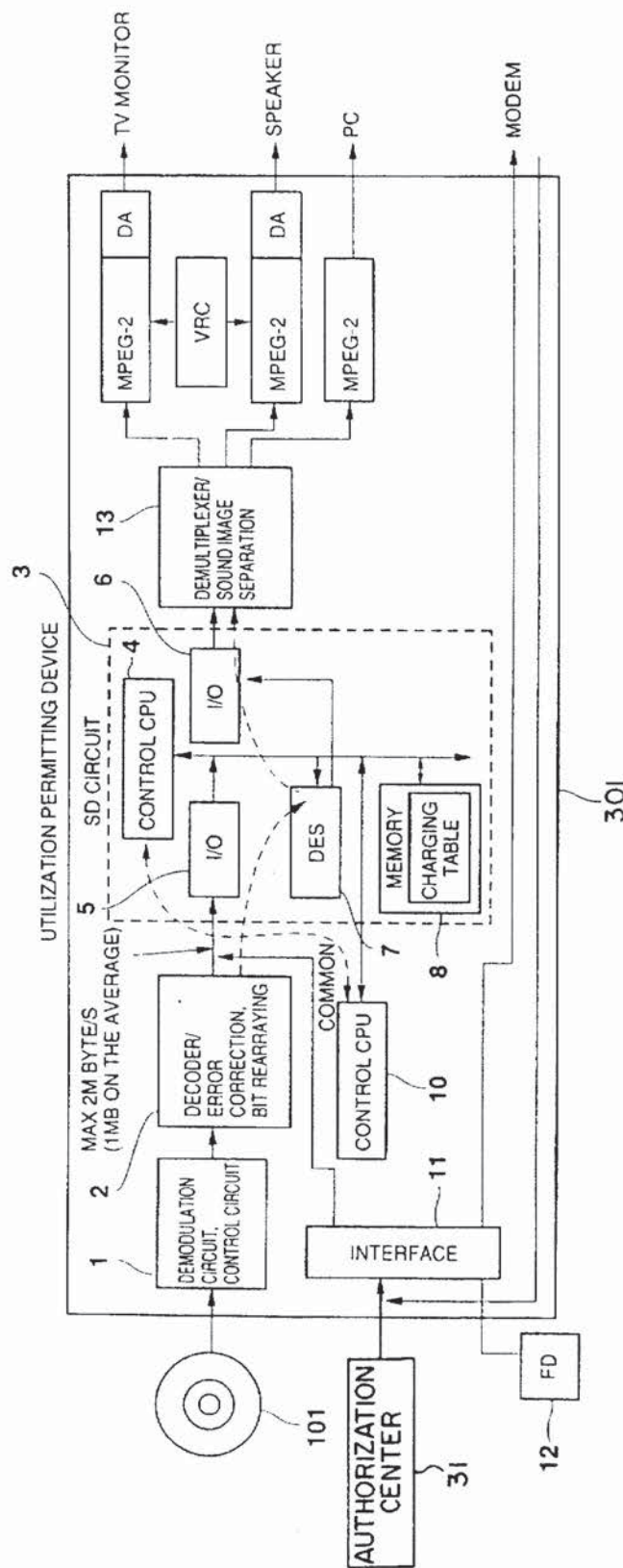


FIG. 3

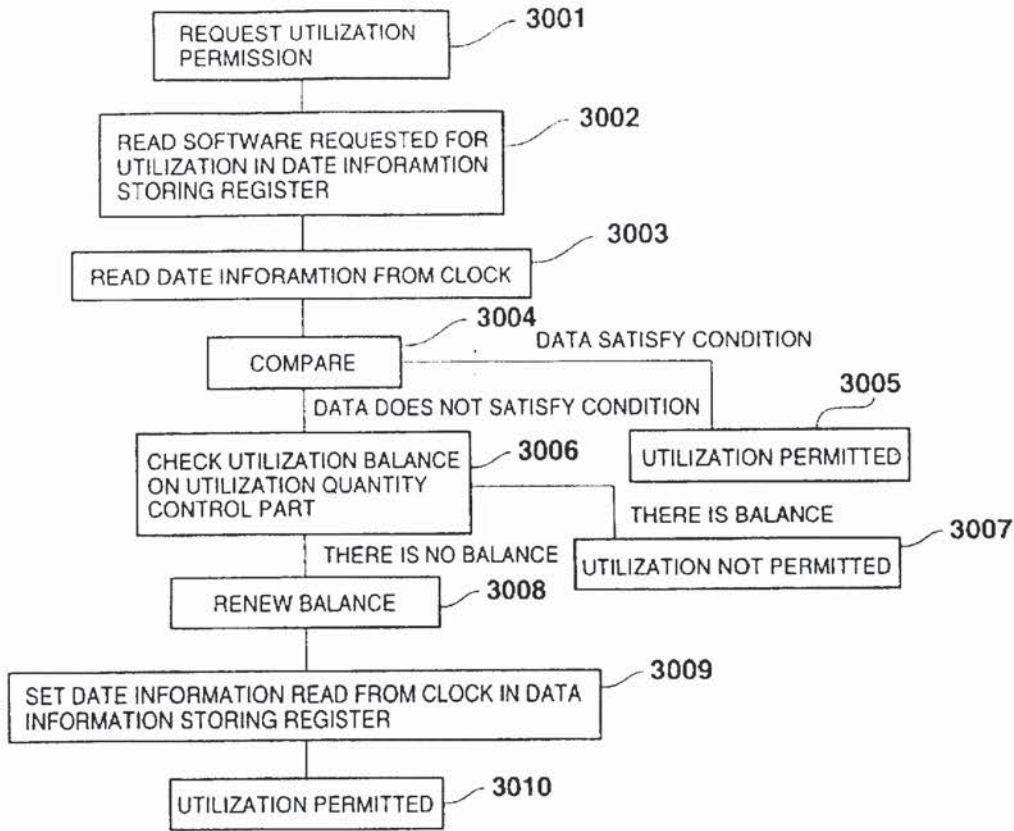


FIG. 4

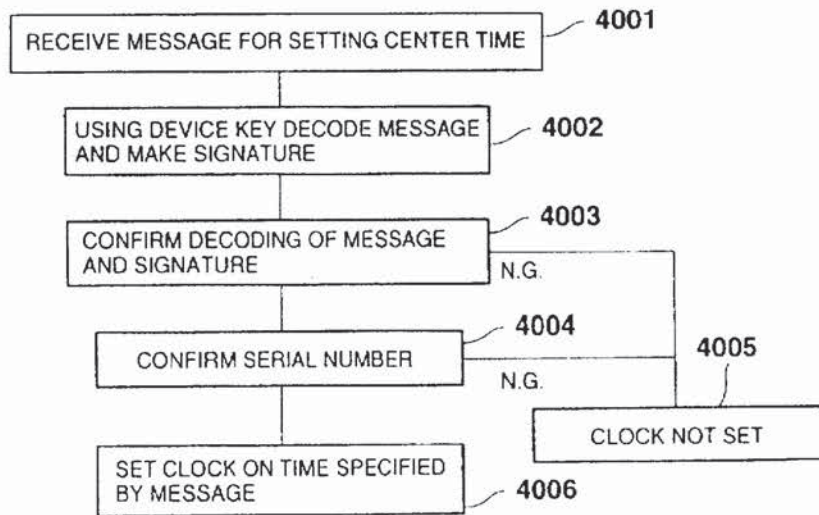
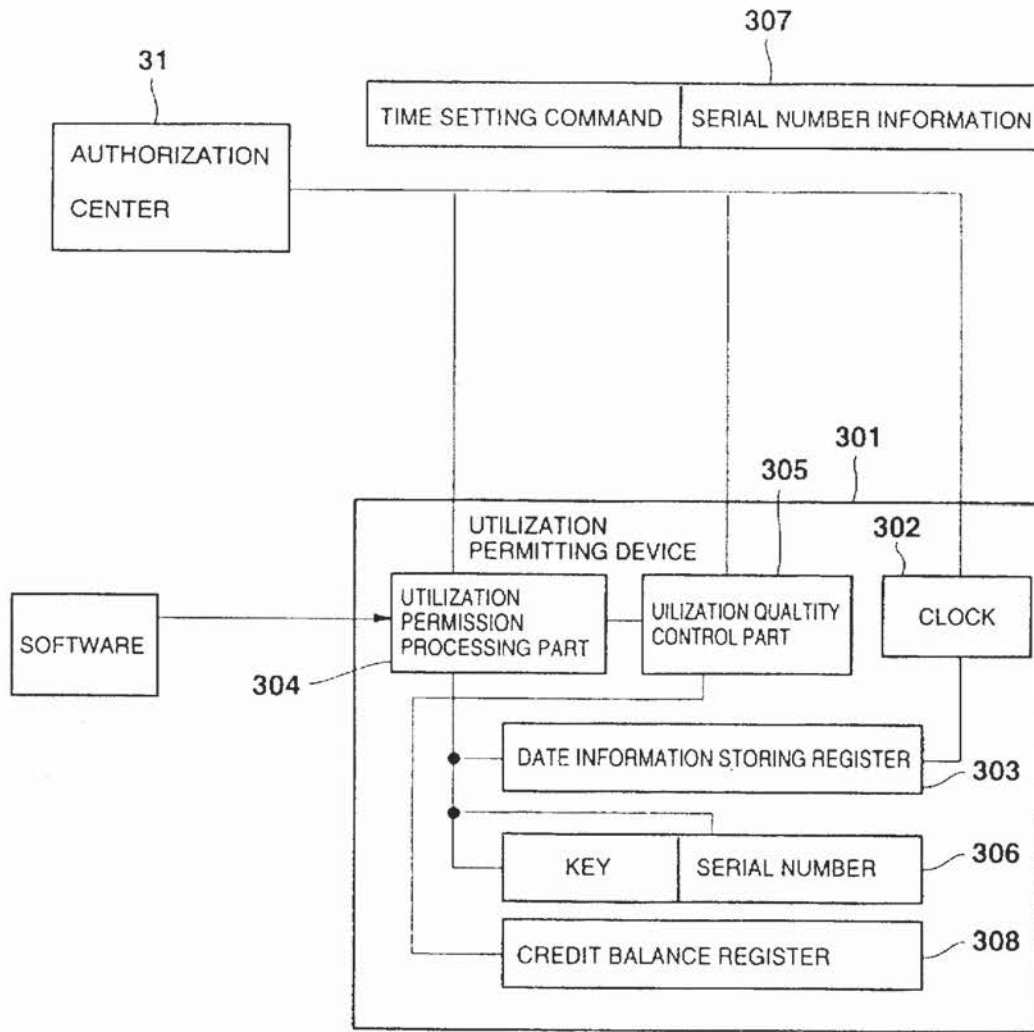


FIG. 5



Explore Litigation Insights

Docket Alarm provides insights to develop a more informed litigation strategy and the peace of mind of knowing you're on top of things.

Real-Time Litigation Alerts



Keep your litigation team up-to-date with **real-time alerts** and advanced team management tools built for the enterprise, all while greatly reducing PACER spend.

Our comprehensive service means we can handle Federal, State, and Administrative courts across the country.

Advanced Docket Research



With over 230 million records, Docket Alarm's cloud-native docket research platform finds what other services can't. Coverage includes Federal, State, plus PTAB, TTAB, ITC and NLRB decisions, all in one place.

Identify arguments that have been successful in the past with full text, pinpoint searching. Link to case law cited within any court document via Fastcase.

Analytics At Your Fingertips



Learn what happened the last time a particular judge, opposing counsel or company faced cases similar to yours.

Advanced out-of-the-box PTAB and TTAB analytics are always at your fingertips.

API

Docket Alarm offers a powerful API (application programming interface) to developers that want to integrate case filings into their apps.

LAW FIRMS

Build custom dashboards for your attorneys and clients with live data direct from the court.

Automate many repetitive legal tasks like conflict checks, document management, and marketing.

FINANCIAL INSTITUTIONS

Litigation and bankruptcy checks for companies and debtors.

E-DISCOVERY AND LEGAL VENDORS

Sync your system to PACER to automate legal marketing.