

- (73) Assignee: **JPI Commercial, LLC.**, Palo Alto, CA (US)
- (*) Notice: Subject to any disclaimer, the term of this patent is extended or adjusted under 35 U.S.C. 154(b) by 1369 days.

This patent is subject to a terminal disclaimer.

(21) Appl. No.: **11/097,985**

(22) Filed: **Apr. 1, 2005**

(65) **Prior Publication Data**

US 2005/0216309 A1 Sep. 29, 2005

Related U.S. Application Data

(62) Division of application No. 10/322,348, filed on Dec. 17, 2002, now Pat. No. 7,668,730.

(51) **Int. Cl.**
G06Q 10/00 (2006.01)

(52) **U.S. Cl.** 705/2; 705/3

(58) **Field of Classification Search** 705/2, 705/3

See application file for complete search history.

(56) **References Cited**

U.S. PATENT DOCUMENTS

- 3,556,342 A 1/1971 Joseph
- 4,847,764 A 7/1989 Halvorson
- 4,976,351 A * 12/1990 Mangini et al. 206/232
- 5,845,255 A 12/1998 Mayaud
- 5,924,074 A 7/1999 Evans
- 6,021,392 A 2/2000 Lester et al.

- 6,347,329 B1 2/2002 Evans
- 6,564,121 B1 * 5/2003 Wallace et al. 700/231
- 6,687,676 B1 2/2004 Denny
- 6,755,784 B2 6/2004 Williams et al.
- 6,952,681 B2 10/2005 McQuade et al.
- 7,058,584 B2 6/2006 Kosinski et al.
- 2001/0001144 A1 5/2001 Kapp

(Continued)

OTHER PUBLICATIONS

NASCSA National Conference, (Nov. 2000), 8 pages.

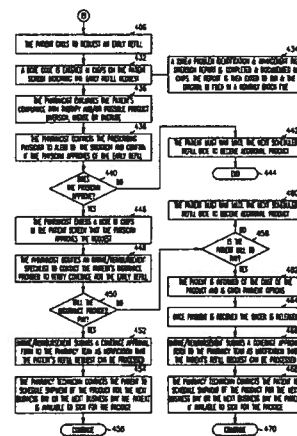
(Continued)

Primary Examiner—Gerald J. O'Connor
Assistant Examiner—Lena Najarian
 (74) *Attorney, Agent, or Firm*—Schwegman, Lundberg & Woessner, P.A.

(57) **ABSTRACT**

A drug distribution system and method utilizes a central pharmacy and database to track all prescriptions for a sensitive drug. Information is kept in the database regarding all physicians allowed to prescribe the sensitive drug, and all patients receiving the drug. Abuses are identified by monitoring data in the database for prescription patterns by physicians and prescriptions obtained by patients. Further verification is made that the physician is eligible to prescribe the drug by consulting a separate database, and optionally whether any actions are taken against the physician. Multiple controls beyond those for normal drugs are imposed on the distribution depending on the sensitivity of the drug.

6 Claims, 16 Drawing Sheets



2002/0042762 A1 4/2002 McQuade et al.
 2002/0052762 A1 5/2002 Kobylevsky et al.
 2002/0161607 A1 10/2002 Subich
 2002/0177232 A1 11/2002 Melker et al.
 2003/0033168 A1 2/2003 Califano et al.
 2003/0046110 A1 3/2003 Gogolak
 2003/0050802 A1 3/2003 Jay et al.
 2003/0093295 A1 5/2003 Lilly et al.
 2003/0110060 A1 6/2003 Clementi
 2003/0127508 A1 7/2003 Jones
 2003/0144876 A1 7/2003 Kosinski et al.
 2003/0160698 A1 8/2003 Andreasson et al.
 2003/0197366 A1 10/2003 Kusterbeck
 2003/0229519 A1 12/2003 Eidex et al.
 2003/0233256 A1 12/2003 Cardenas et al.
 2004/0008123 A1 1/2004 Carrender et al.
 2004/0019567 A1 1/2004 Hecceg et al.
 2004/0019794 A1 1/2004 Moradi et al.
 2004/0078237 A1 4/2004 Kaafarani et al.
 2004/0107117 A1 6/2004 Denny
 2004/0117126 A1 6/2004 Fetterman et al.
 2004/0122712 A1 6/2004 Hill, Sr. et al.
 2004/0122713 A1 6/2004 Hill, Sr. et al.
 2004/0162740 A1 8/2004 Ericsson et al.
 2004/0176985 A1 9/2004 Lilly et al.

OTHER PUBLICATIONS

"Diversion Prevention Through Responsible Distribution", *NADDI Regional Training*, (May 2001), 12 pages.
 "Diversion Prevention Through Responsible Distribution", *NADDI Regional Training Tennessee*, (Jun. 2001), 14 Pages.
 "Diversion Prevention Through Responsible Distribution", *NADDI National Conference*, (Nov. 2001), 15 pages.

"An Interview with Orphan Medical about Xyrem", http://www.talkaboutsleep.com/sleepdisorders/archives/Narcolepsy_xyrem_interview.htm, (Feb. 12, 2001), 3 pgs.
 Ukens, C., "Specialty Pharmacy", *Drug Topics*, 144, (Jun. 5, 2000), 40-47.
 "U.S. Appl. No. 10/322,348, Advisory Action mailed Feb. 5, 2007", 3 pgs.
 "U.S. Appl. No. 10/322,348, Amendment and Response to Final Office Action mailed Jan. 17, 2007", 17 pgs.
 "U.S. Appl. No. 10/322,348, Amendment and Response to Final Office Action mailed Mar. 29, 2006", 11 pgs.
 "U.S. Appl. No. 10/322,348, Final Office Action mailed Oct. 18, 2006", 14 pgs.
 "U.S. Appl. No. 10/322,348, Final Office Action mailed Dec. 29, 2005", 11 pgs.
 "U.S. Appl. No. 10/322,348, Non Final Office Action mailed Jun. 17, 2005", 26 pgs.
 "U.S. Appl. No. 10/322,348, Non Final Office Action mailed Jun. 29, 2005", 12 pgs.
 "U.S. Appl. No. 10/322,348, Non Final Office Action Response mailed Aug. 8, 2006", 10 pgs.
 "U.S. Appl. No. 10/322,348, Preliminary Amendment mailed Sep. 30, 2004", 11 pgs.
 "U.S. Appl. No. 10/731,915 Non Final Office Action mailed Oct. 5, 2004", 21 pgs.
 "U.S. Appl. No. 10/731,915, Non Final Office Action mailed Aug. 12, 2005", 22 pgs.
 "U.S. Appl. No. 10/731,915, Non Final Office Action Response mailed Feb. 2, 2005", 17 pgs.
 "U.S. Appl. No. 10/731,915, Non Final Office Action mailed Jun. 19, 2006", 18 pgs.
 "U.S. Appl. No. 11/097,651, Non-Final Office Action mailed Mar. 3, 2010", 19 Pgs.
 * cited by examiner

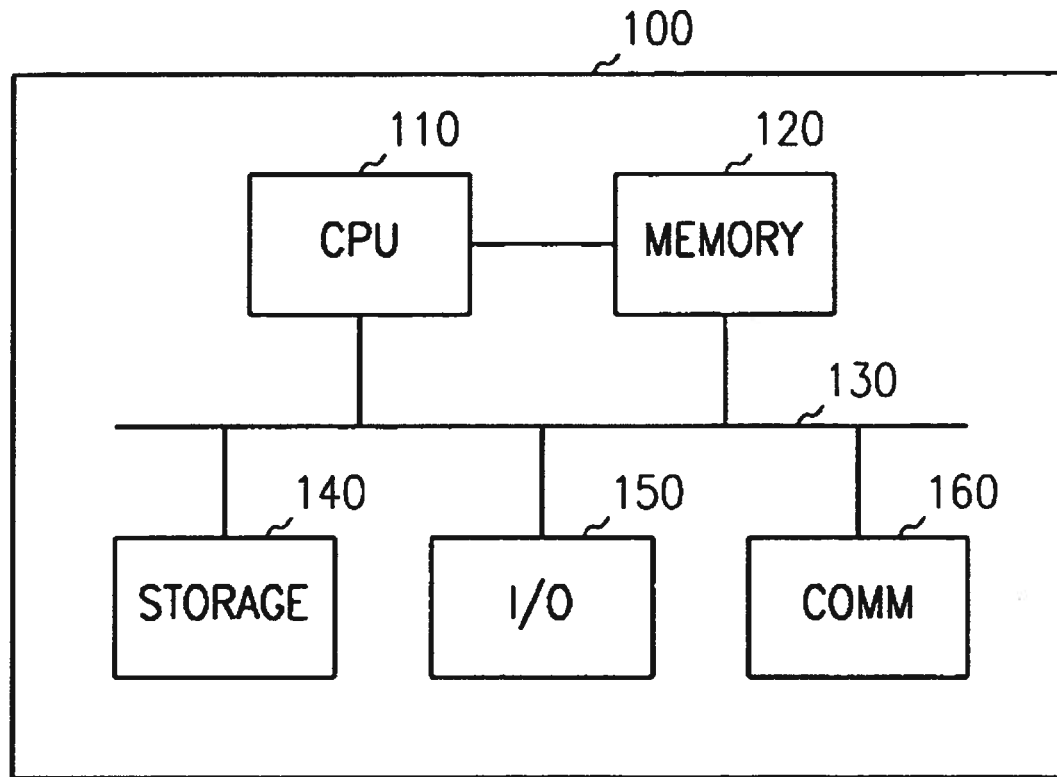


FIG. 1

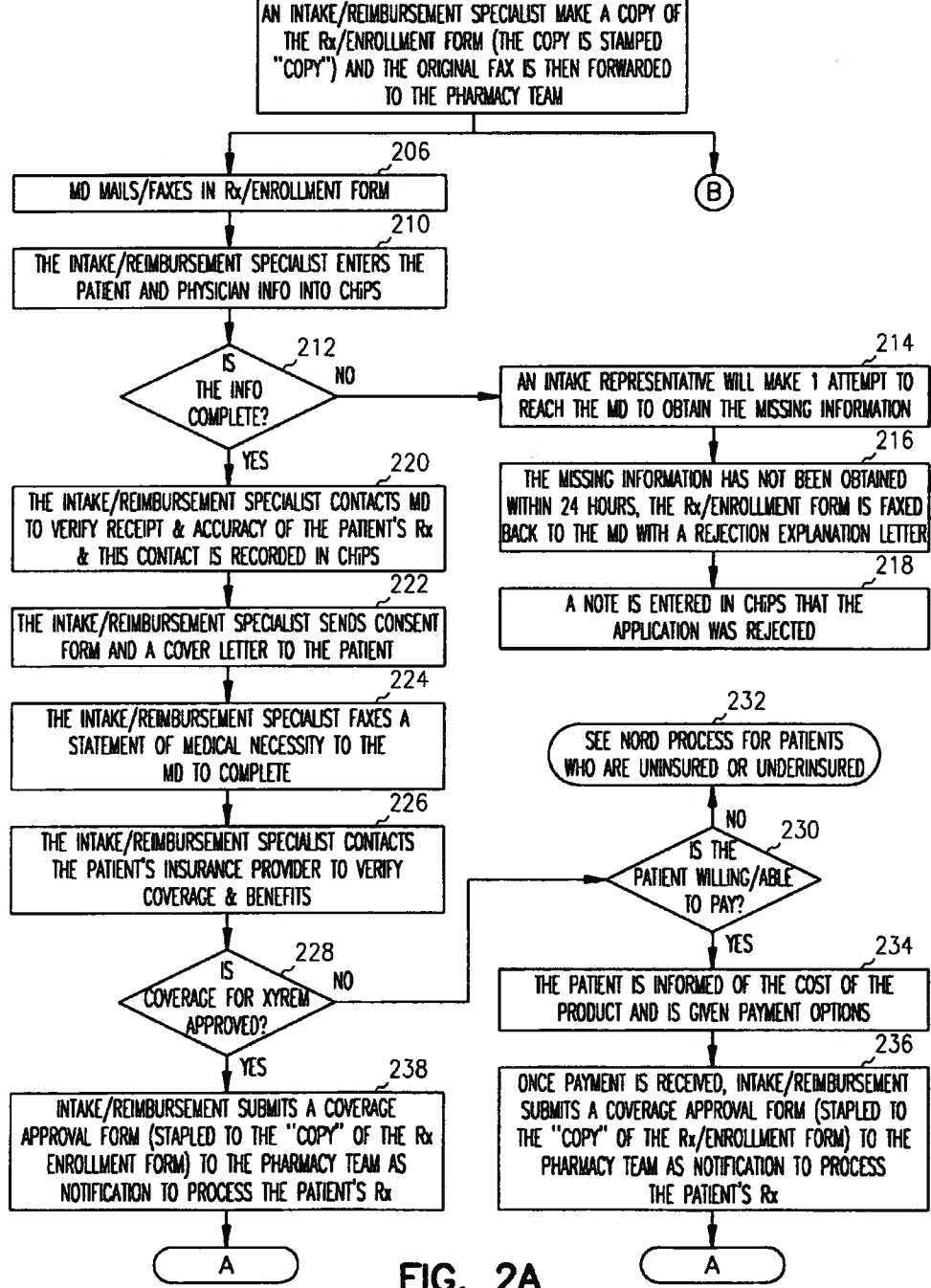


FIG. 2A

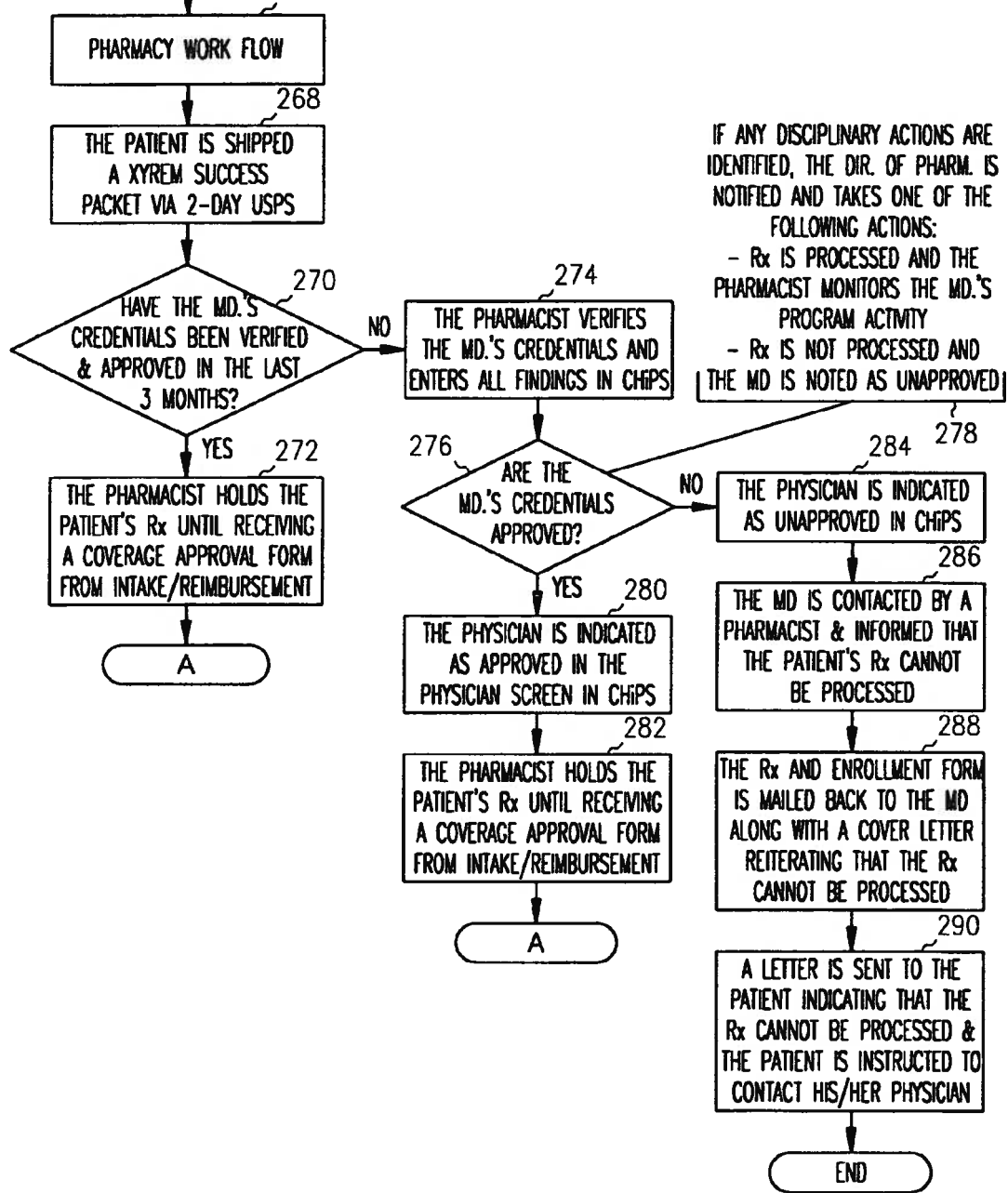


FIG. 2B

Explore Litigation Insights

Docket Alarm provides insights to develop a more informed litigation strategy and the peace of mind of knowing you're on top of things.

Real-Time Litigation Alerts



Keep your litigation team up-to-date with **real-time alerts** and advanced team management tools built for the enterprise, all while greatly reducing PACER spend.

Our comprehensive service means we can handle Federal, State, and Administrative courts across the country.

Advanced Docket Research



With over 230 million records, Docket Alarm's cloud-native docket research platform finds what other services can't. Coverage includes Federal, State, plus PTAB, TTAB, ITC and NLRB decisions, all in one place.

Identify arguments that have been successful in the past with full text, pinpoint searching. Link to case law cited within any court document via Fastcase.

Analytics At Your Fingertips



Learn what happened the last time a particular judge, opposing counsel or company faced cases similar to yours.

Advanced out-of-the-box PTAB and TTAB analytics are always at your fingertips.

API

Docket Alarm offers a powerful API (application programming interface) to developers that want to integrate case filings into their apps.

LAW FIRMS

Build custom dashboards for your attorneys and clients with live data direct from the court.

Automate many repetitive legal tasks like conflict checks, document management, and marketing.

FINANCIAL INSTITUTIONS

Litigation and bankruptcy checks for companies and debtors.

E-DISCOVERY AND LEGAL VENDORS

Sync your system to PACER to automate legal marketing.