



US007130810B2

(12) **United States Patent**  
**Foster et al.**

(10) **Patent No.:** **US 7,130,810 B2**  
(45) **Date of Patent:** **Oct. 31, 2006**

(54) **METHOD AND SYSTEM FOR PROPERTY VALUATION IN AN ON-LINE COMPUTING ENVIRONMENT**

5,970,475 A	10/1999	Barnes et al.
6,023,687 A	2/2000	Weatherly et al.
6,049,784 A	4/2000	Weatherly et al.
6,115,694 A *	9/2000	Cheetham et al. .... 705/10
6,321,202 B1	11/2001	Raveis, Jr.
6,351,738 B1	2/2002	Clark
6,785,661 B1	8/2004	Mandler et al.
2001/0005829 A1	6/2001	Raveis, Jr.

(75) Inventors: **Paul Foster**, New York, NY (US);  
**Robert Rieger**, Trumbull, CT (US);  
**David Shea**, New Canaan, CT (US)

(73) Assignee: **General Electrical Capital Corp.**,  
Stamford, CT (US)

(Continued)

(\* ) Notice: Subject to any disclaimer, the term of this patent is extended or adjusted under 35 U.S.C. 154(b) by 1062 days.

FOREIGN PATENT DOCUMENTS

EP 1220125 A2 \* 7/2002

(21) Appl. No.: **09/766,779**

OTHER PUBLICATIONS

(22) Filed: **Jan. 22, 2001**

Hanrahan, Michael J.; "Future lies in Investment Analysis. Property Management Programs", National Real Estate Investor v35n1 pp. 69-69, Jan. 1993.\*

(65) **Prior Publication Data**

US 2004/0073508 A1 Apr. 15, 2004

(Continued)

**Related U.S. Application Data**

Primary Examiner—Jagdish N Patel

(60) Provisional application No. 60/249,985, filed on Nov. 20, 2000.

(74) Attorney, Agent, or Firm—King & Spalding LLP

(51) **Int. Cl.**

**G06Q 40/00** (2006.01)

(52) **U.S. Cl.** ..... **705/10; 705/35**

(58) **Field of Classification Search** ..... **705/10, 705/20, 38, 35**

See application file for complete search history.

(57) **ABSTRACT**

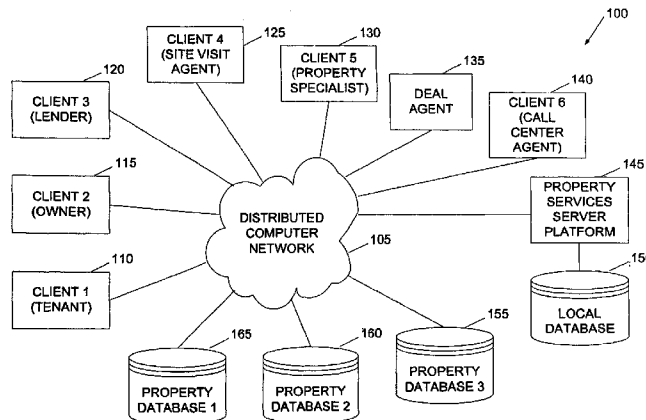
The present invention relates to providing on-line tools for property-related on-line calculations. A distributed computer network can enable a user to access multiple databases and to obtain comparables data related to a property of interest for use in calculations. A user can access the latest, broadest set of relevant property data and to select relevant comparable values quickly and with minimal manual intervention. An on-line property management environment can comprise a distributed computer network coupled to numerous client computers, a property services server platform connected to a local data base, and numerous property information databases. A valuation tool, lease improvement calculator, refinancing calculator, capitalization rate calculator, mortgage and amortization calculator, and an affordability calculator can enable a user to make multiple property-related on-line calculations.

(56) **References Cited**

U.S. PATENT DOCUMENTS

5,414,621 A *	5/1995	Hough	705/10
5,664,115 A	9/1997	Fraser	
5,680,305 A	10/1997	Apgar, IV	364/401
5,699,527 A	12/1997	Davidson	395/238
5,754,850 A	5/1998	Janssen	
5,802,501 A	9/1998	Graff	705/36
5,857,174 A	1/1999	Dugan	705/1
5,892,900 A	4/1999	Ginter et al.	

**18 Claims, 55 Drawing Sheets**



U.S. PATENT DOCUMENTS

2001/0034607	A1	10/2001	Perschbacher, III et al.	
2001/0037273	A1*	11/2001	Greenlee, Jr. ....	705/35
2001/0039506	A1*	11/2001	Robbins .....	705/10
2001/0047282	A1	11/2001	Raveis, Jr.	
2001/0051960	A1	12/2001	Kubick et al.	
2002/0004737	A1*	1/2002	McVeigh .....	705/10
2002/0035535	A1	3/2002	Brock, Sr.	
2002/0046159	A1	4/2002	Raveis, Jr.	
2002/0052814	A1	5/2002	Ketterer	
2002/0062218	A1	5/2002	Pianin	
2002/0062277	A1	5/2002	Foster et al.	

OTHER PUBLICATIONS

“*Real Estate News and Advice*”, *Realty Times* (online). Apr. 7, 2000. Retrieved from the internet: <URL <http://web.archive.org/web/20000407223740/http://realtytimes.com>>.

“*Real Estate Center Online News*”, *Real Estate Center* (online). Aug. 11, 2000. Retrieved from the internet: <URL <http://web.archive.org/web/20000815095134/recenter.tamu.edu/news/recon.html>>.

PropertyFirst—Home Page— [www.propertyfirst.com/main.asp](http://www.propertyfirst.com/main.asp)—May 9, 2001.

PropertyFirst—Search for Sale—[www.propertyfirst.com/search/page1.asp?imgtype=forsale](http://www.propertyfirst.com/search/page1.asp?imgtype=forsale)—May 9, 2001.

PropertyFirst—Search for Lease—[www.pfcweb02.propertyfirst.com/wfl1/new\\_search\\_step1.asp](http://www.pfcweb02.propertyfirst.com/wfl1/new_search_step1.asp)—May 9, 2001.

PropertyFirst—Commercial Real Estate Broker Search—[www.propertyfirst.com/directory/directory.asp?imgtype=directory&membertype=2](http://www.propertyfirst.com/directory/directory.asp?imgtype=directory&membertype=2)—May 9, 2001.

PropertyFirst—About Us—[www.propertyfirst.com/aboutus/aboutus.asp](http://www.propertyfirst.com/aboutus/aboutus.asp)—May 9, 2001.

PropertyFirst—Logon Page—[www.propertyfirst.com/logon/asp?imgtype=addlisting&FromLocation=addlisting](http://www.propertyfirst.com/logon/asp?imgtype=addlisting&FromLocation=addlisting)—May 9, 2001.

Storetrax—Home Page—[www.storetrax.com/stx/autologin.do](http://www.storetrax.com/stx/autologin.do)—May 9, 2001.

Stoetrax—About Us—About Storetrax—[www.storetrax.com/stx/aboutus.jsp](http://www.storetrax.com/stx/aboutus.jsp)—May 9, 2001.

Storetrax—Find Space—[www.storetrax.com/stx/startquicksearch.do](http://www.storetrax.com/stx/startquicksearch.do)—May 9, 2001.

Storetrax—List Space—[www.storetrax.com/stx/listspace.jsp](http://www.storetrax.com/stx/listspace.jsp)—May 9, 2001.

Storetrax—Forum—Forum List—[www.storetrax.com/forum](http://www.storetrax.com/forum)—May 9, 2001.

\* cited by examiner

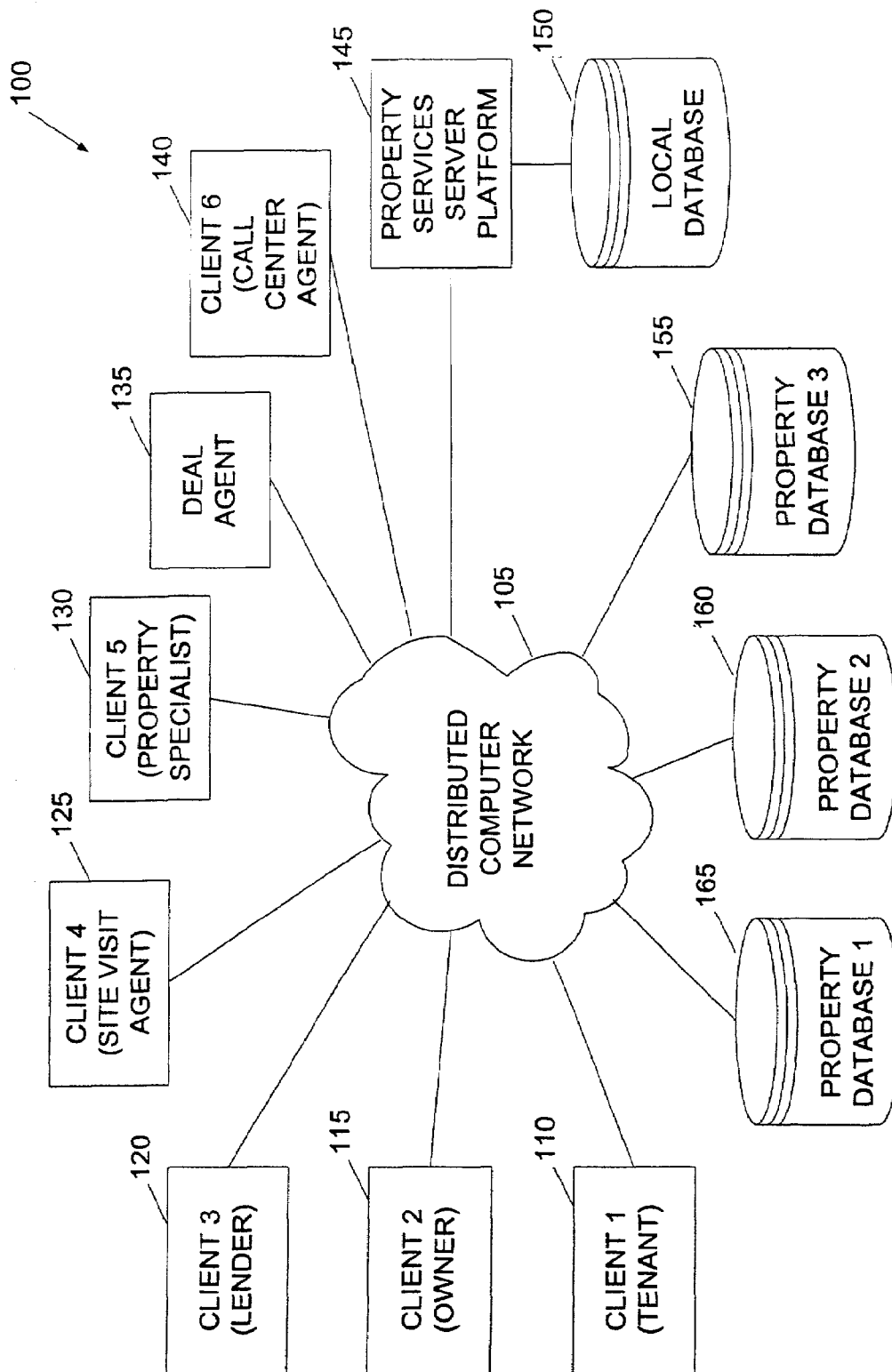
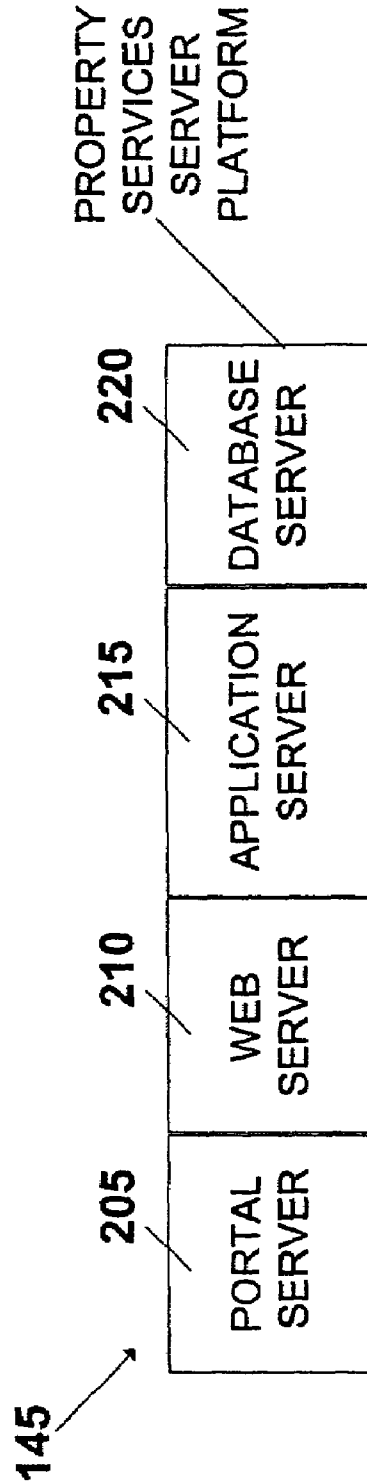
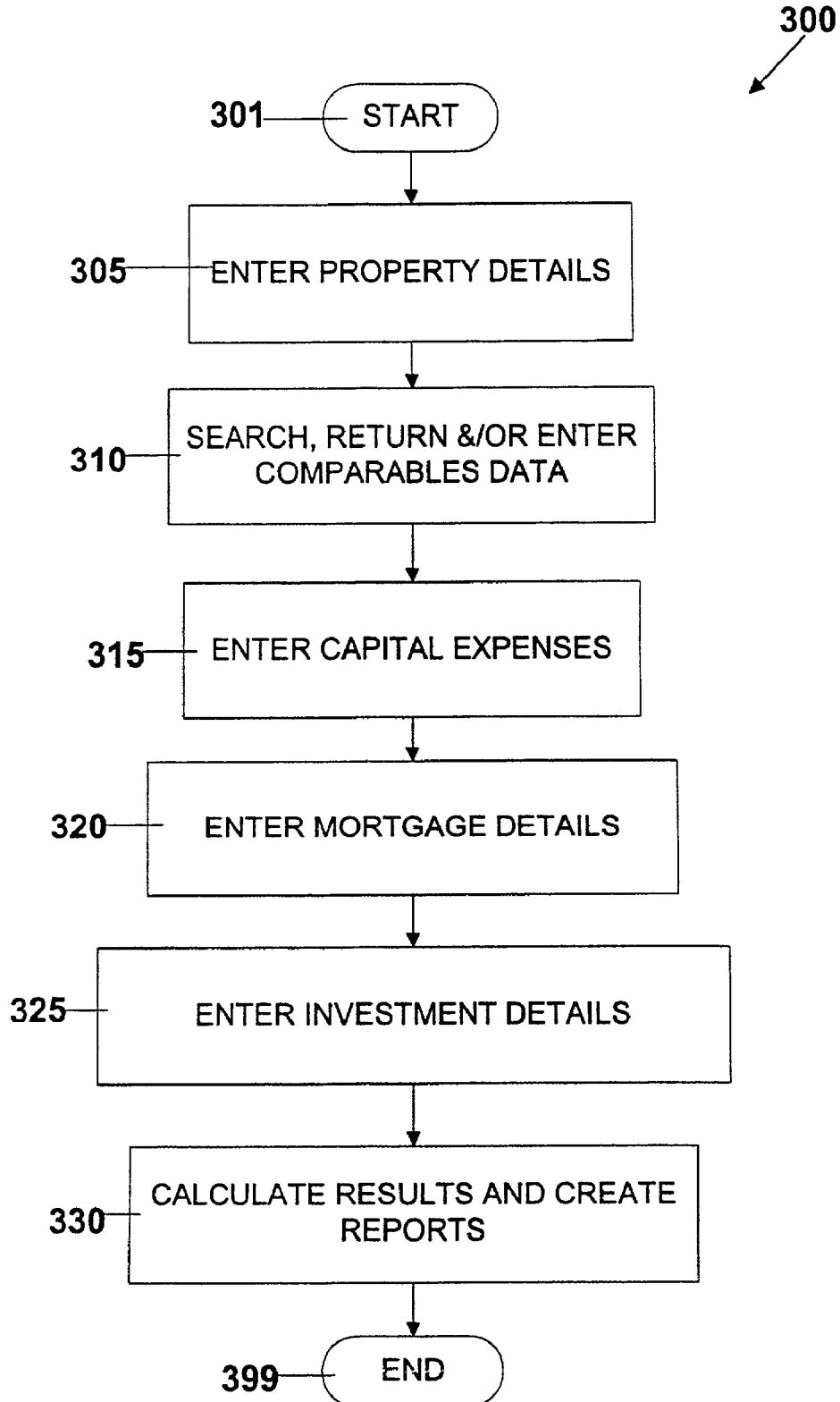


Fig. 1

**FIG. 2**



**FIG. 3**



# Explore Litigation Insights

Docket Alarm provides insights to develop a more informed litigation strategy and the peace of mind of knowing you're on top of things.

## Real-Time Litigation Alerts



Keep your litigation team up-to-date with **real-time alerts** and advanced team management tools built for the enterprise, all while greatly reducing PACER spend.

Our comprehensive service means we can handle Federal, State, and Administrative courts across the country.

## Advanced Docket Research



With over 230 million records, Docket Alarm's cloud-native docket research platform finds what other services can't. Coverage includes Federal, State, plus PTAB, TTAB, ITC and NLRB decisions, all in one place.

Identify arguments that have been successful in the past with full text, pinpoint searching. Link to case law cited within any court document via Fastcase.

## Analytics At Your Fingertips



Learn what happened the last time a particular judge, opposing counsel or company faced cases similar to yours.

Advanced out-of-the-box PTAB and TTAB analytics are always at your fingertips.

## API

Docket Alarm offers a powerful API (application programming interface) to developers that want to integrate case filings into their apps.

## LAW FIRMS

Build custom dashboards for your attorneys and clients with live data direct from the court.

Automate many repetitive legal tasks like conflict checks, document management, and marketing.

## FINANCIAL INSTITUTIONS

Litigation and bankruptcy checks for companies and debtors.

## E-DISCOVERY AND LEGAL VENDORS

Sync your system to PACER to automate legal marketing.