

[54] SELF-SERVICE TERMINAL

[76] Inventors: Lawrence B. Lockwood, 5935 Folsom Dr., La Jolla, Calif. 92037; Michael Wells, 7290 Engineer Rd., San Diego, Calif. 92111; Henri J. A. Charmasson, 4550 Kearny Villa Rd., San Diego, Calif. 92123

[21] Appl. No.: 671,705

[22] Filed: Nov. 15, 1984

Related U.S. Patent Documents

Reissue of:

[64] Patent No.: 4,359,631
Issued: Nov. 16, 1982
Appl. No.: 168,953
Filed: Jul. 11, 1980

[51] Int. Cl.⁴ G06E 7/08

[52] U.S. Cl. 235/381; 194/217; 358/115; 360/12

[58] Field of Search 235/381; 360/12, 91, 360/92, 137; 358/93, 903, 115; 194/DIG. 5, DIG. 8, 12, 42, 2

[56] References Cited

U.S. PATENT DOCUMENTS

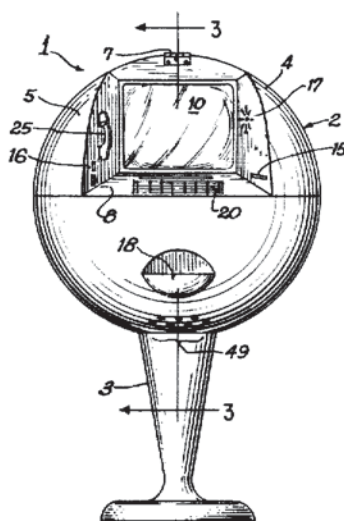
Table with 4 columns: Patent No., Date, Inventor, and Reference. Includes entries for Morris, Wahlberg, Curtis et al., Miller, Burgyan, and Yuris et al.

Primary Examiner—David L. Trafton
Attorney, Agent, or Firm—Charmasson & Holz

[57] ABSTRACT

A self service terminal for dispensing voice and video information, printed documents, and goods; and for accepting service orders and payments therefor by currency or credit card. The terminal comprises a cathode ray tube display with mass storage for presenting information about the product or service sold, a keyboard for entry of customer requests, a printer for delivering coupons and tickets, a vending machine for dispensing small items, a coinbox and credit card reader for accepting payments for goods and services, and a telephone interface for communicating with the staff of a command center. The operation of the terminal is controlled by a microprocessor linked to an automated reservation system. The preferred embodiment of the invention is dedicated to the promotion and sale of travel services. The terminal is operated from three memory devices. A non-volatile memory is used to store the operating program for the terminal. A semi-permanent storage in the form of a video disc is used to hold the travel documentaries and other sales presentations. A randomly accessible mass storage is used to record flight schedules, hotel occupancy and other variables which are periodically updated from the command center via a phone line data communication link. The vending machine is used primarily for dispensing travel brochures, maps, foreign currencies and other goods related to the contemplated travel.

11 Claims, 11 Drawing Figures



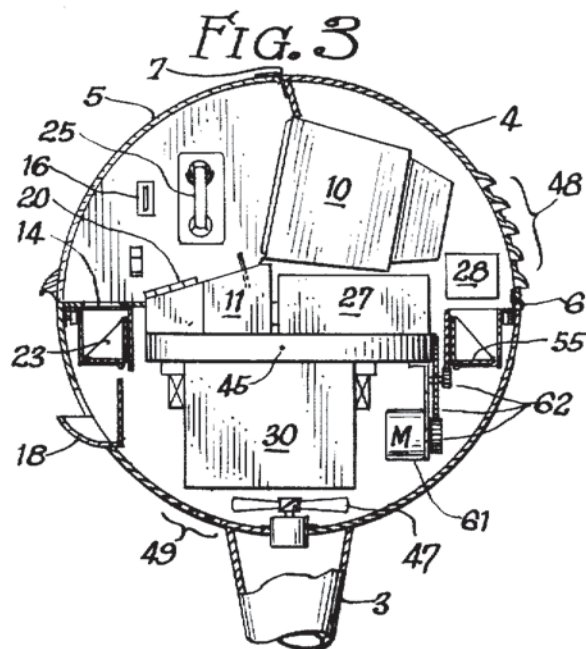
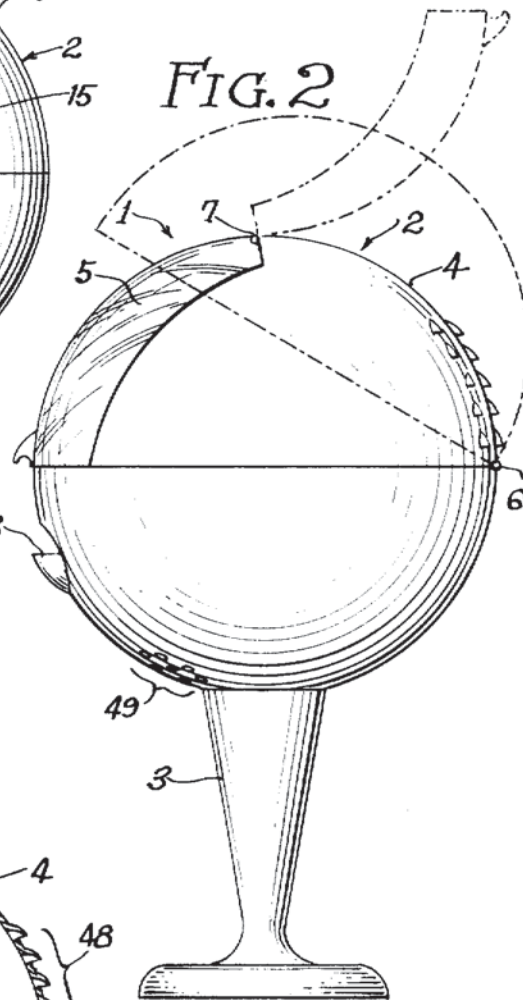
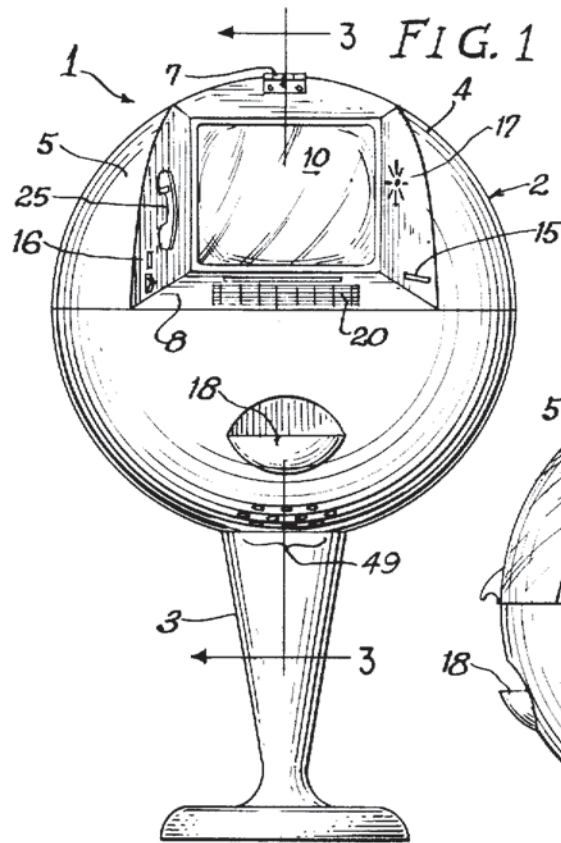


FIG. 4

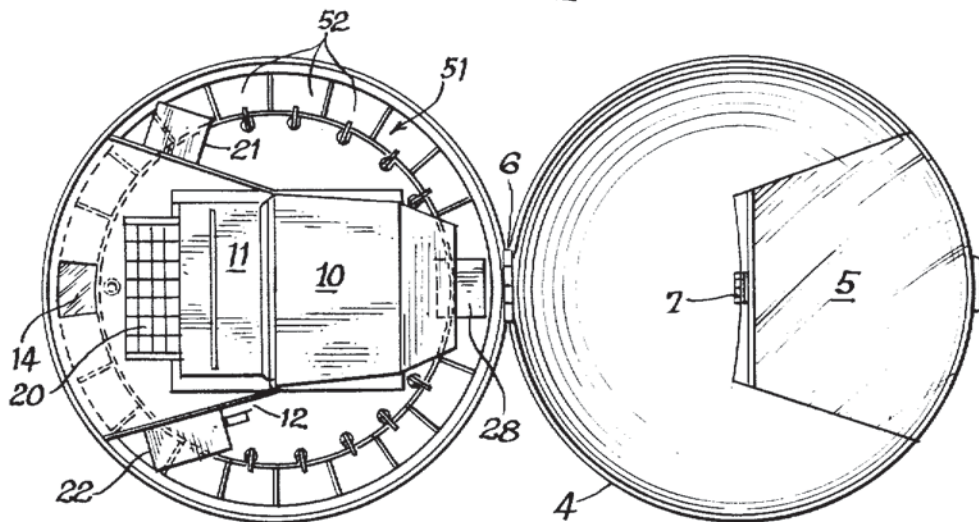
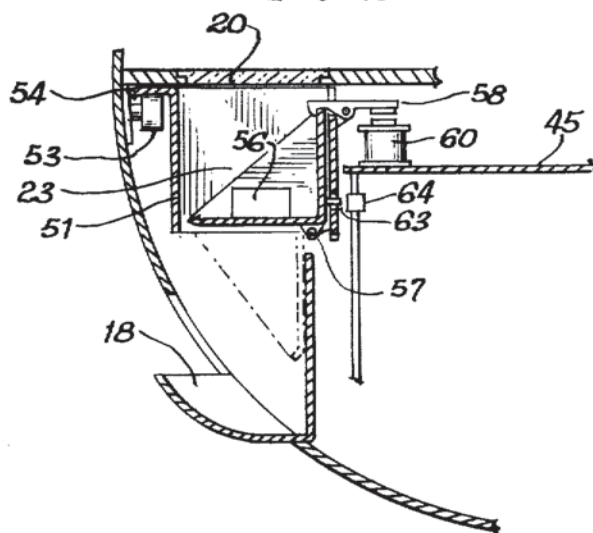
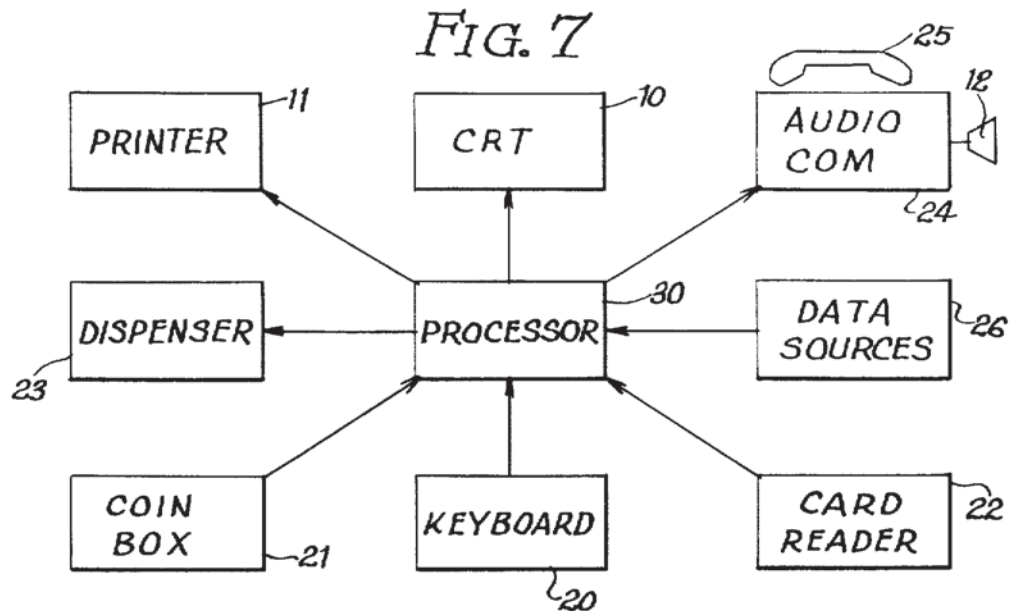
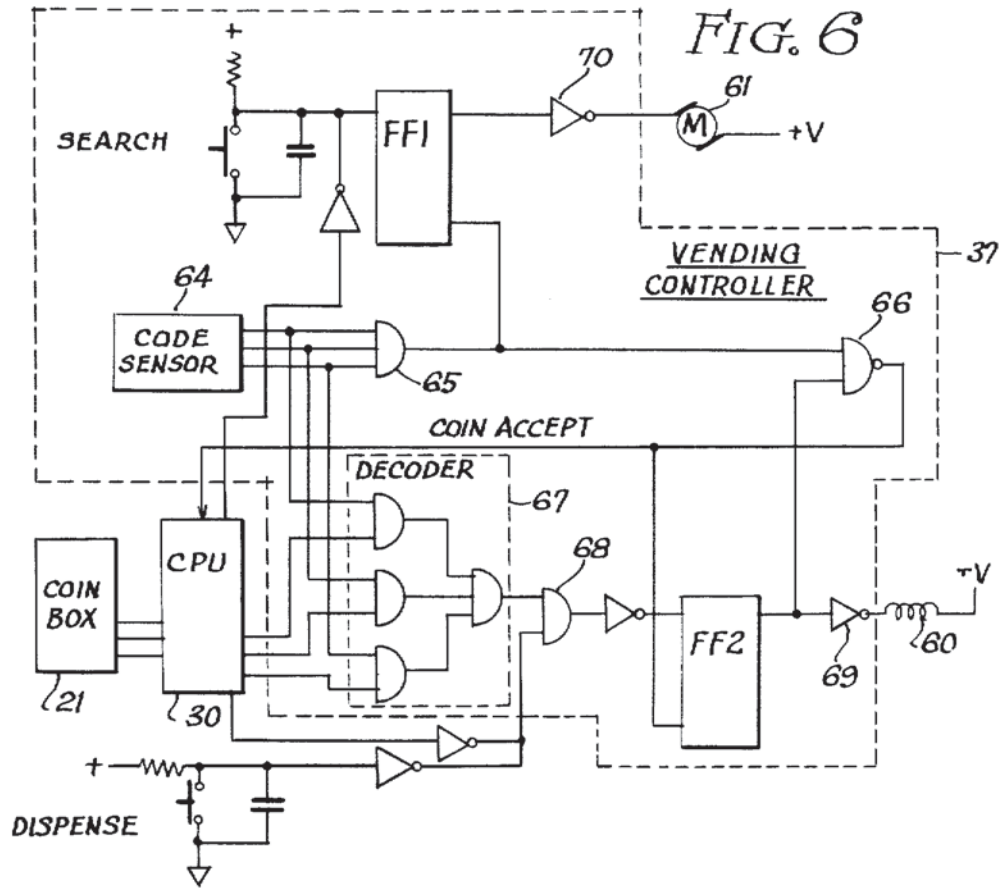


FIG. 5





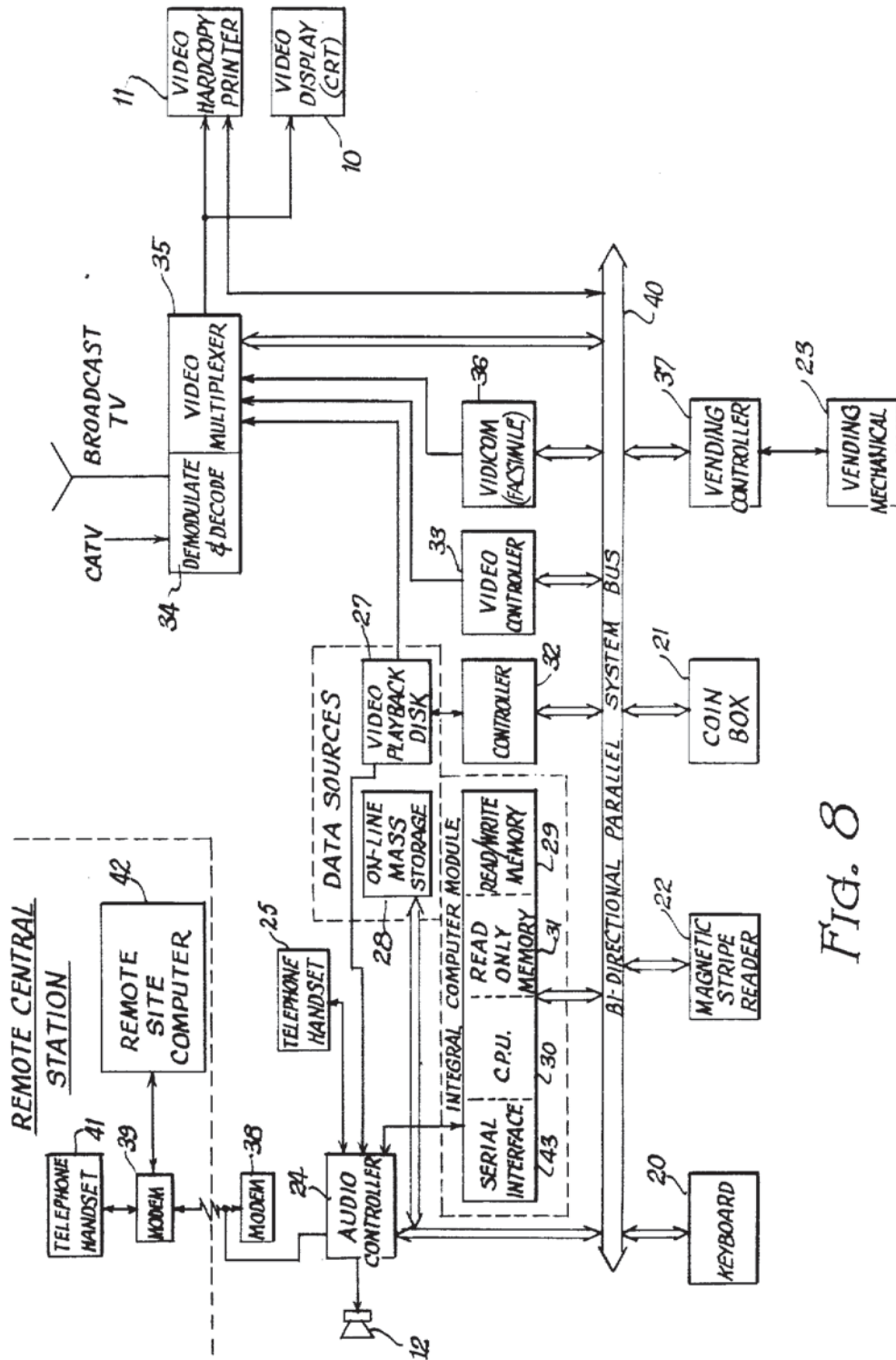


FIG. 8

Explore Litigation Insights

Docket Alarm provides insights to develop a more informed litigation strategy and the peace of mind of knowing you're on top of things.

Real-Time Litigation Alerts



Keep your litigation team up-to-date with **real-time alerts** and advanced team management tools built for the enterprise, all while greatly reducing PACER spend.

Our comprehensive service means we can handle Federal, State, and Administrative courts across the country.

Advanced Docket Research



With over 230 million records, Docket Alarm's cloud-native docket research platform finds what other services can't. Coverage includes Federal, State, plus PTAB, TTAB, ITC and NLRB decisions, all in one place.

Identify arguments that have been successful in the past with full text, pinpoint searching. Link to case law cited within any court document via Fastcase.

Analytics At Your Fingertips



Learn what happened the last time a particular judge, opposing counsel or company faced cases similar to yours.

Advanced out-of-the-box PTAB and TTAB analytics are always at your fingertips.

API

Docket Alarm offers a powerful API (application programming interface) to developers that want to integrate case filings into their apps.

LAW FIRMS

Build custom dashboards for your attorneys and clients with live data direct from the court.

Automate many repetitive legal tasks like conflict checks, document management, and marketing.

FINANCIAL INSTITUTIONS

Litigation and bankruptcy checks for companies and debtors.

E-DISCOVERY AND LEGAL VENDORS

Sync your system to PACER to automate legal marketing.