



(12) **United States Patent**  
**Chaudhri**

(10) **Patent No.:** **US 7,685,163 B2**  
(45) **Date of Patent:** **Mar. 23, 2010**

(54) **AUTOMATED CREATION OF MEDIA ASSET ILLUSTRATIONS**

(75) Inventor: **Imran Chaudhri**, San Francisco, CA (US)

(73) Assignee: **Apple Inc.**, Cupertino, CA (US)

(\*) Notice: Subject to any disclaimer, the term of this patent is extended or adjusted under 35 U.S.C. 154(b) by 438 days.

7,305,436	B2 *	12/2007	Willis .....	709/204
7,346,668	B2 *	3/2008	Willis .....	709/219
7,370,276	B2 *	5/2008	Willis .....	715/747
7,478,323	B2 *	1/2009	Dowdy .....	715/253
2005/0278377	A1 *	12/2005	Mirrashidi et al. ....	707/104.1
2006/0015378	A1 *	1/2006	Mirrashidi et al. ....	705/7
2006/0089949	A1	4/2006	Robbin et al.	
2006/0123052	A1 *	6/2006	Robbin et al. ....	707/104.1
2006/0155914	A1 *	7/2006	Jobs et al. ....	711/100
2006/0206811	A1 *	9/2006	Dowdy .....	715/526
2006/0247980	A1 *	11/2006	Mirrashidi et al. ....	705/26
2007/0192818	A1 *	8/2007	Bourges-Sevenier et al. ....	725/132

(21) Appl. No.: **11/650,857**

(22) Filed: **Jan. 7, 2007**

(65) **Prior Publication Data**  
US 2008/0178068 A1 Jul. 24, 2008

(51) **Int. Cl.**  
**G06F 17/30** (2006.01)

(52) **U.S. Cl.** ..... **707/104.1**; 707/10; 715/253; 715/526; 715/274; 715/275; 715/277

(58) **Field of Classification Search** ..... 707/104.1, 707/10; 715/253, 526, 274, 275, 277; 725/132  
See application file for complete search history.

(56) **References Cited**

**U.S. PATENT DOCUMENTS**

6,748,382	B1 *	6/2004	Mohan et al. ....	707/10
7,213,036	B2 *	5/2007	Apparao et al. ....	707/104.1

**OTHER PUBLICATIONS**

U.S. Appl. No. 11/519,460, entitled "Media Manager with Integrated Browsers", filed Sep. 11, 2006.

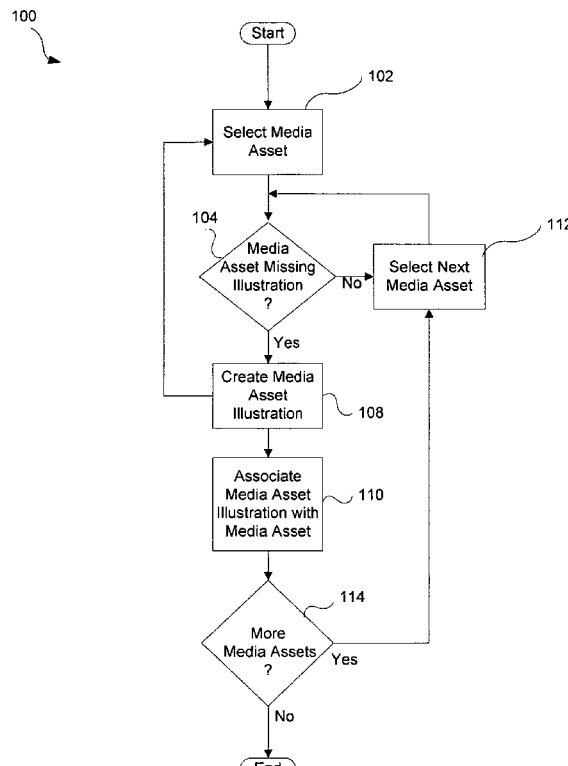
\* cited by examiner

*Primary Examiner*—Jean M Corrielus

(57) **ABSTRACT**

The invention pertains to techniques for creating media asset illustrations for media assets are disclosed. The created media asset illustrations are useful for media assets that lack associated media asset illustrations. The techniques can analyze media asset data or media asset metadata when creating the create media asset illustrations. The created media asset illustrations can, for example, be used while playing, browsing or displaying associated media assets.

**16 Claims, 10 Drawing Sheets**



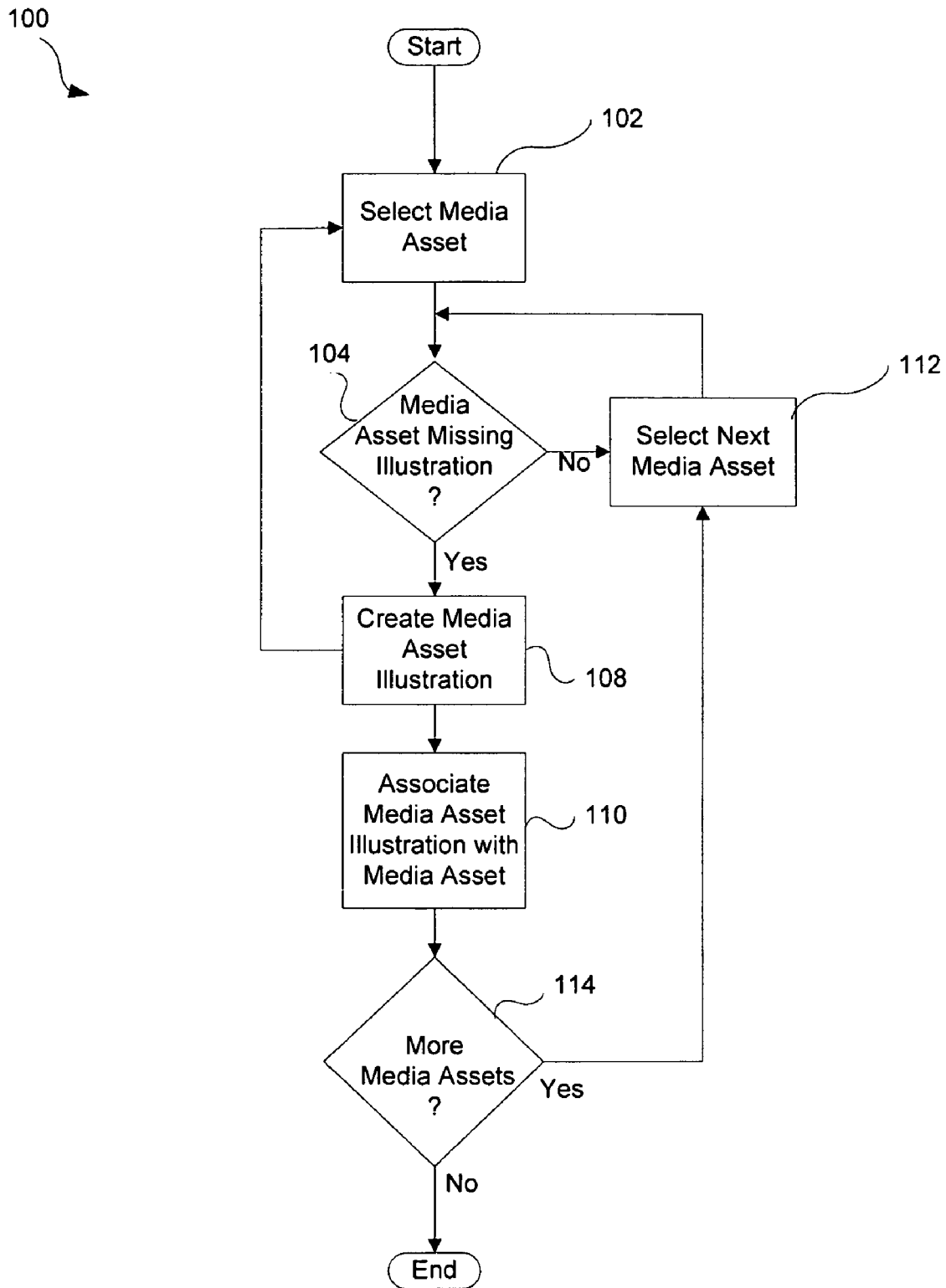


FIG. 1

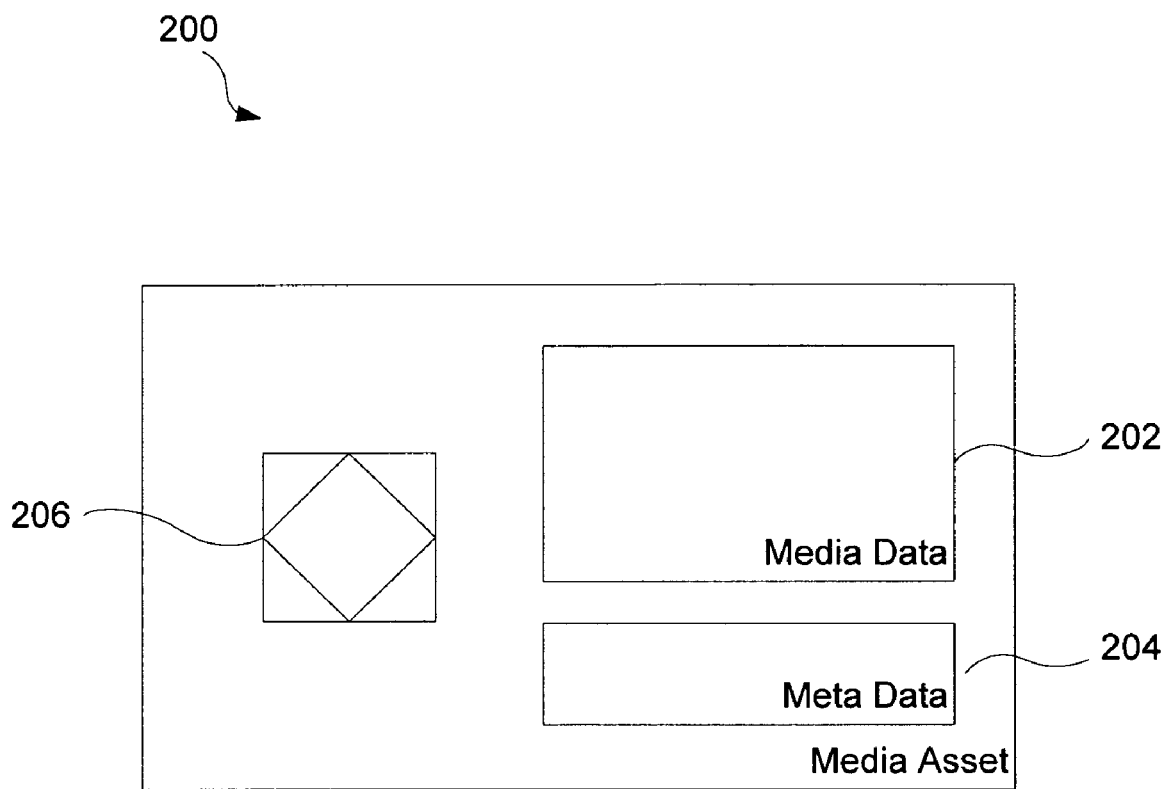


FIG. 2

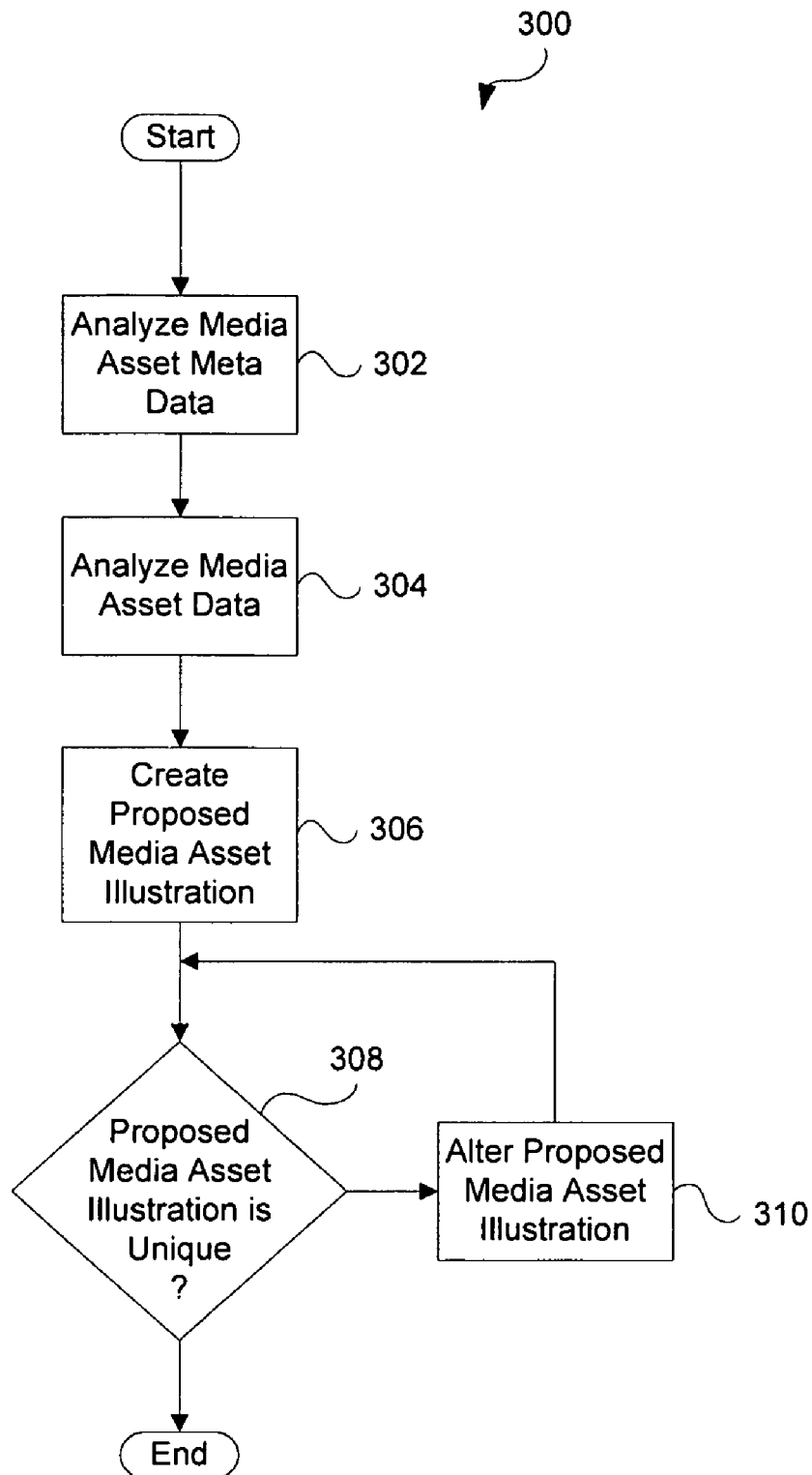


FIG. 3

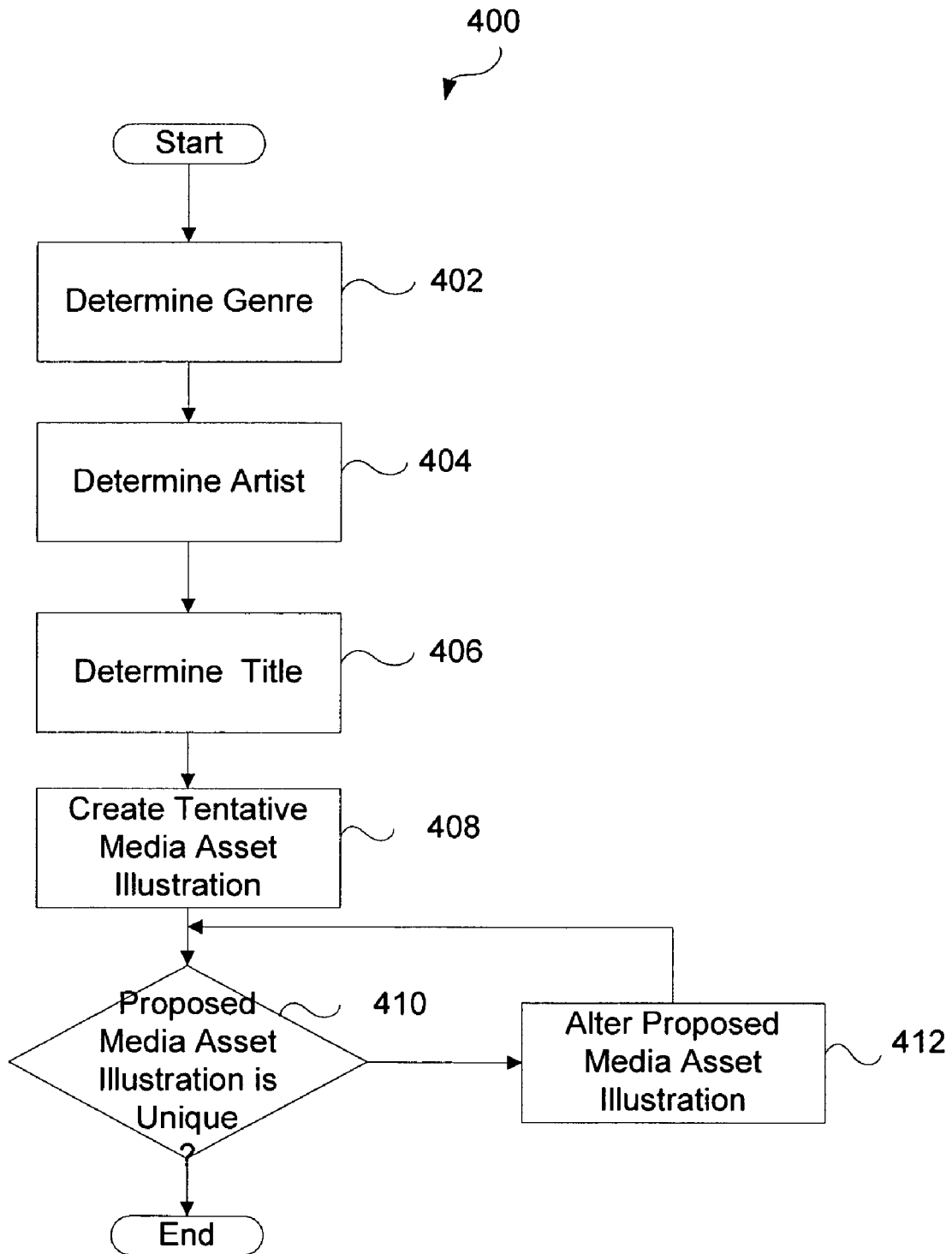


FIG. 4

# Explore Litigation Insights

Docket Alarm provides insights to develop a more informed litigation strategy and the peace of mind of knowing you're on top of things.

## Real-Time Litigation Alerts



Keep your litigation team up-to-date with **real-time alerts** and advanced team management tools built for the enterprise, all while greatly reducing PACER spend.

Our comprehensive service means we can handle Federal, State, and Administrative courts across the country.

## Advanced Docket Research



With over 230 million records, Docket Alarm's cloud-native docket research platform finds what other services can't. Coverage includes Federal, State, plus PTAB, TTAB, ITC and NLRB decisions, all in one place.

Identify arguments that have been successful in the past with full text, pinpoint searching. Link to case law cited within any court document via Fastcase.

## Analytics At Your Fingertips



Learn what happened the last time a particular judge, opposing counsel or company faced cases similar to yours.

Advanced out-of-the-box PTAB and TTAB analytics are always at your fingertips.

## API

Docket Alarm offers a powerful API (application programming interface) to developers that want to integrate case filings into their apps.

## LAW FIRMS

Build custom dashboards for your attorneys and clients with live data direct from the court.

Automate many repetitive legal tasks like conflict checks, document management, and marketing.

## FINANCIAL INSTITUTIONS

Litigation and bankruptcy checks for companies and debtors.

## E-DISCOVERY AND LEGAL VENDORS

Sync your system to PACER to automate legal marketing.