



# United States Patent [19]

[11] Patent Number: 5,797,134

McMillan et al.

[45] Date of Patent: Aug. 18, 1998

[54] MOTOR VEHICLE MONITORING SYSTEM FOR DETERMINING A COST OF INSURANCE

|           |        |               |            |
|-----------|--------|---------------|------------|
| 5,548,273 | 8/1996 | Nicol et al.  | 340/439    |
| 5,550,551 | 8/1996 | Alesio        | 342/457    |
| 5,638,273 | 6/1997 | Coiner et al. | 364/424.04 |

[75] Inventors: Robert John McMillan, Tampa, Fla.; Alexander Dean Craig, Moreland Hills, Ohio; John Patrick Heinen, Tampa, Fla.

### FOREIGN PATENT DOCUMENTS

9002388 8/1989 WIPO

[73] Assignee: Progressive Casualty Insurance Company, Mayfield Village, Ohio

### OTHER PUBLICATIONS

Rosenberg, Martin; Alexander, Stephen A. Rate Classification Reform in New Jersey, Best's Review(Prop/Casualty) vol. 92, No. 12, pp. 30-32, Apr. 1992.

Kaneko, Tetsuya; Jovanis, Paul P. Multiday driving patterns and motro carrier accident risk. A disaggregate analysis. Accident Analysis and Prevention, vol. 24, No. 5, pp. 437-456, Jan. 1, 1992.

"The Safest Cars of '91"; Baig, Edward U.S. News & World Report, v109, n22, p. 71; Dec. 3, 1990.

"Vendors Spice Up Services"; Robert Deierlein Beverage World, v109, n1467, p. 82; Jun. 1990.

[21] Appl. No.: 592,958

[22] Filed: Jan. 29, 1996

[51] Int. Cl.<sup>6</sup> ..... G06F 17/60

[52] U.S. Cl. .... 705/400; 705/4

[58] Field of Search ..... 395/204; 364/424.01, 364/424.04, 565; 340/441; 346/18; 705/4, 400

Primary Examiner—Edward R. Cosimano

Assistant Examiner—Thanh-Hang Voqui

Attorney, Agent, or Firm—Fay, Sharpe, Beall, Fagan, Minnich and McKee

### [56] References Cited

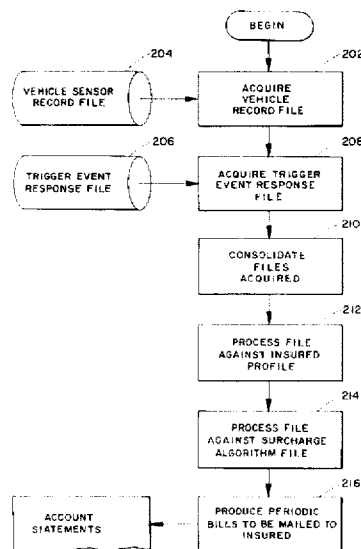
#### U.S. PATENT DOCUMENTS

|           |         |                |            |
|-----------|---------|----------------|------------|
| 4,533,962 | 8/1985  | Decker et al.  |            |
| 4,608,638 | 8/1986  | Tsikos         |            |
| 4,667,336 | 5/1987  | Best           |            |
| 4,763,745 | 8/1988  | Eto et al.     |            |
| 4,807,179 | 2/1989  | Clere et al.   |            |
| 4,829,434 | 5/1989  | Karmel et al.  |            |
| 4,843,463 | 6/1989  | Michetti       |            |
| 4,843,578 | 6/1989  | Wade           | 364/565    |
| 4,853,720 | 8/1989  | Onari et al.   |            |
| 4,939,652 | 7/1990  | Steiner        |            |
| 4,987,541 | 1/1991  | Levente et al. |            |
| 4,992,943 | 2/1991  | McCracken      |            |
| 5,055,851 | 10/1991 | Sheffer        | 342/457    |
| 5,111,289 | 5/1992  | Lucas et al.   |            |
| 5,189,621 | 2/1993  | Onari et al.   |            |
| 5,223,844 | 6/1993  | Mansell et al. | 342/357    |
| 5,319,374 | 6/1994  | Desai et al.   | 342/387    |
| 5,365,451 | 11/1994 | Wang et al.    | 364/449    |
| 5,430,432 | 7/1995  | Camhi et al.   | 340/438    |
| 5,499,182 | 3/1996  | Ousborne       | 364/424.04 |

### [57] ABSTRACT

A method and system of determining a cost of automobile insurance based upon monitoring, recording and communicating data representative of operator and vehicle driving characteristics. The cost is adjustable retrospectively and can be prospectively set by relating the driving characteristics to predetermined safety standards. The method comprises steps of monitoring a plurality of raw data elements representative of an operating state of the vehicle or an action of the operator. Selected ones of the raw data elements are recorded when the ones are determined to have an identified relationship to safety standards. The selected ones are consolidated for processing against an insurer profile and for identifying a surcharge or discount to be applied to a base cost of automobile insurance. A final cost is produced from the base costs and the surcharges or discounts.

26 Claims, 6 Drawing Sheets



Progressive Exhibit 2003  
Liberty Mutual v. Progressive  
CBM2013-00009

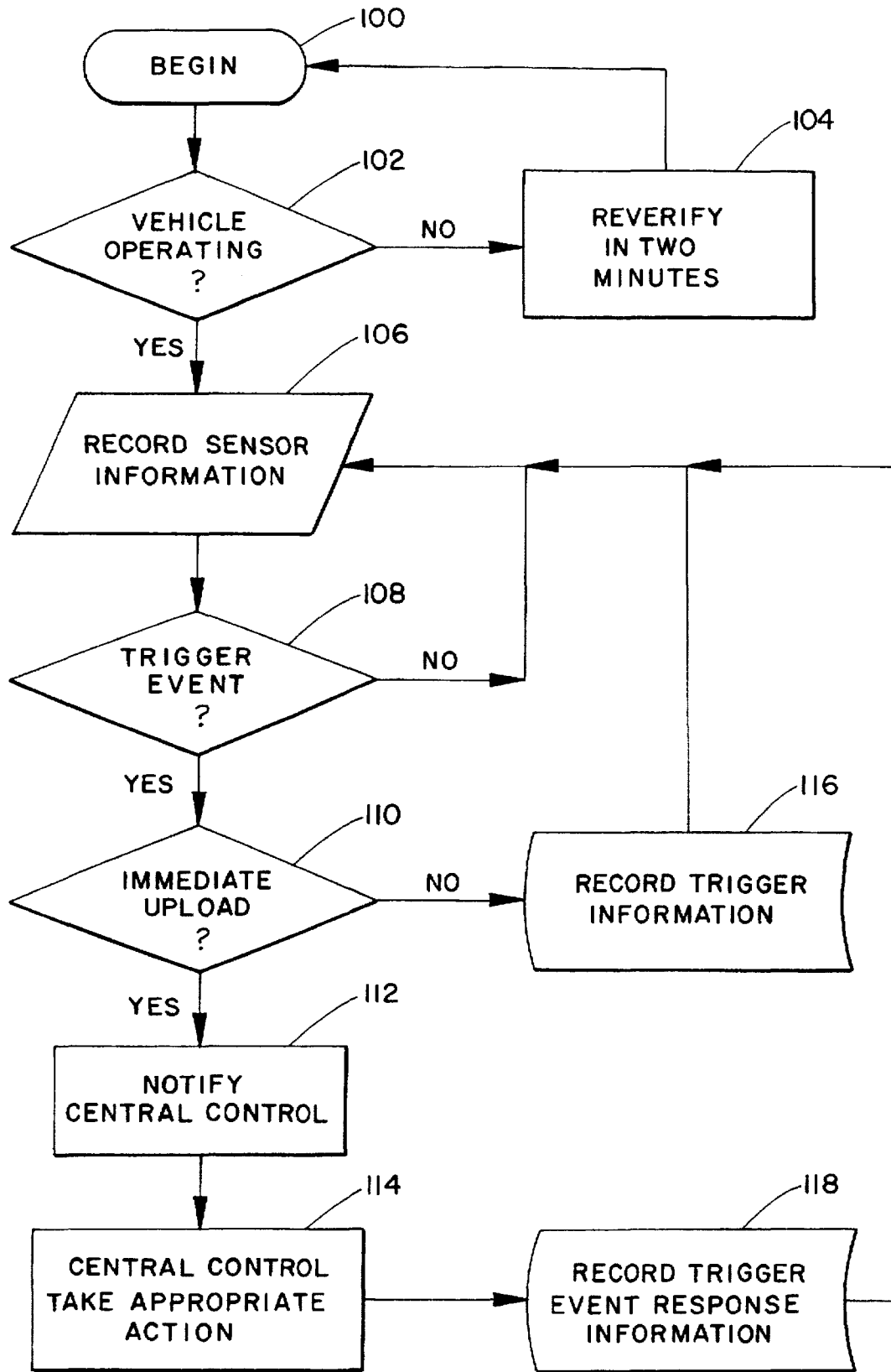
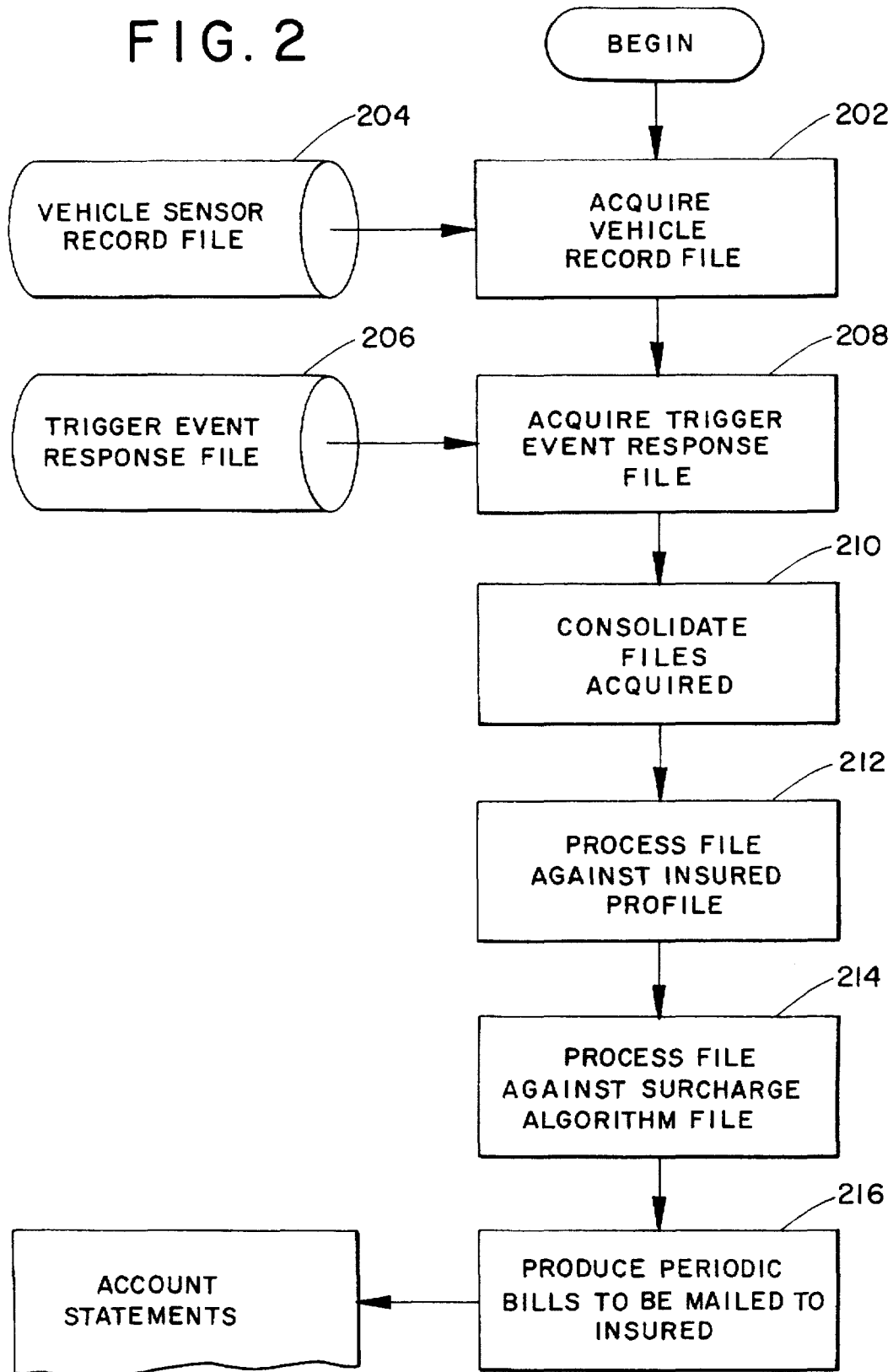


FIG. 1

FIG. 2



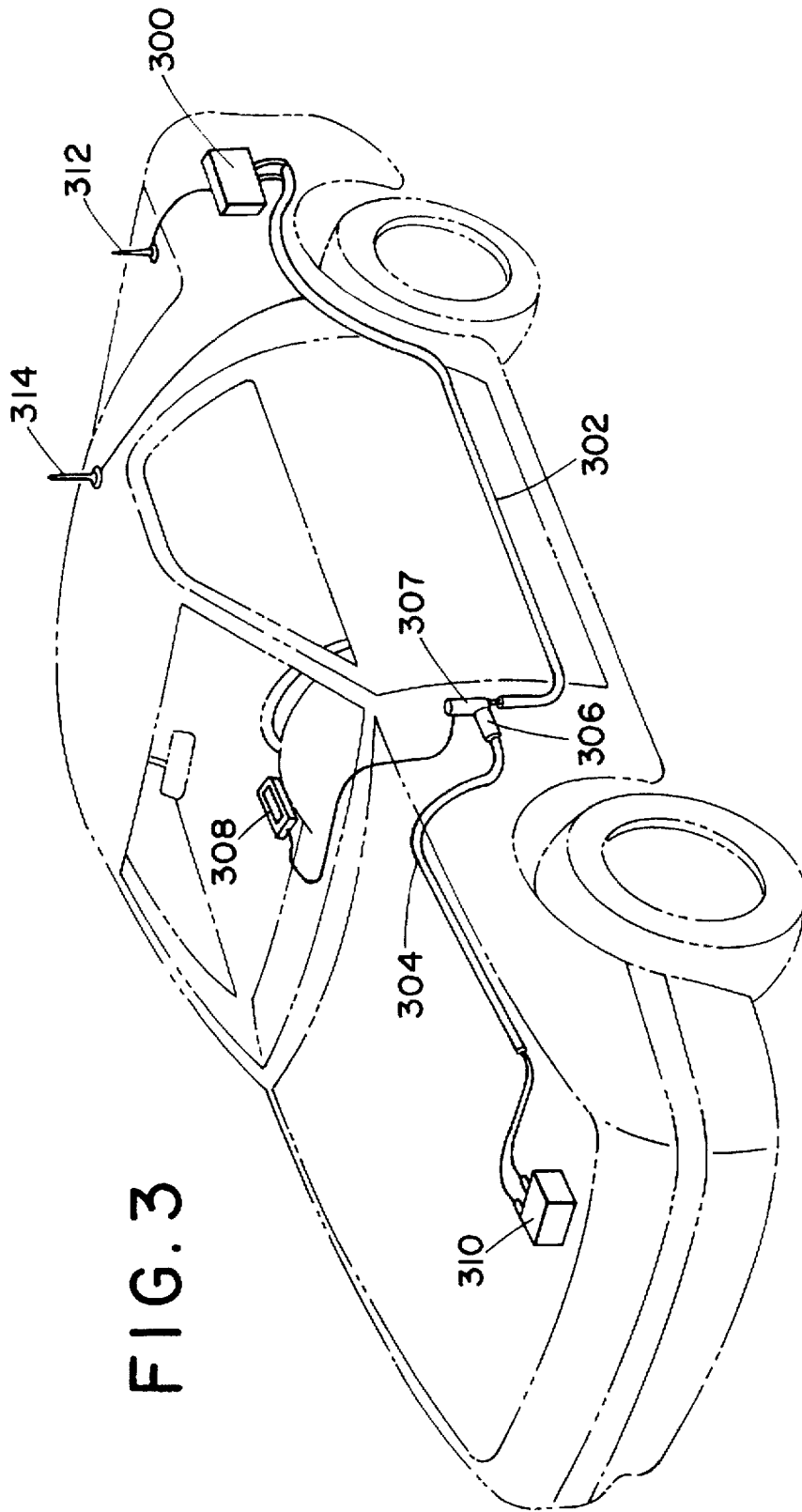


FIG. 3

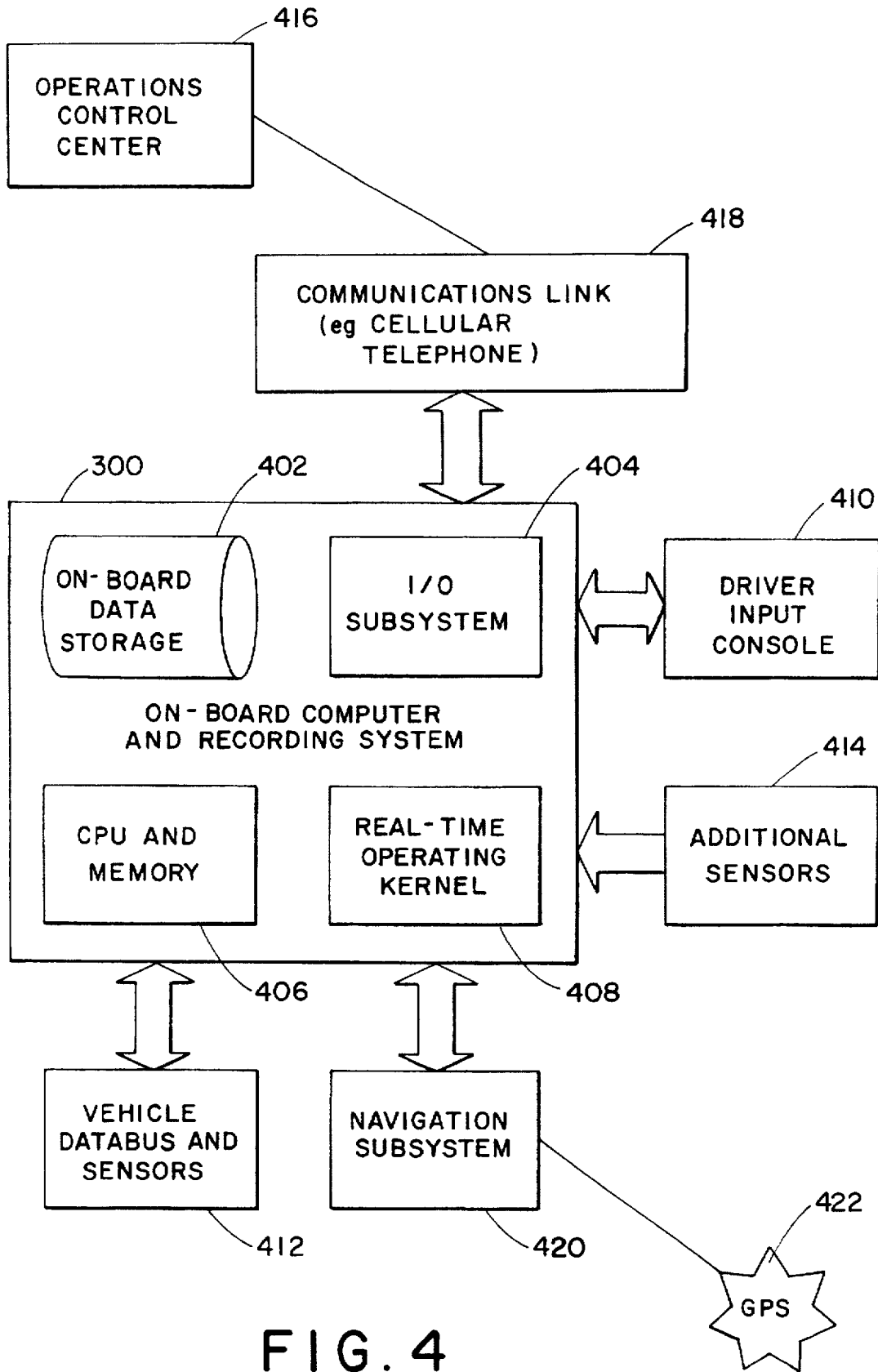


FIG. 4

# Explore Litigation Insights

Docket Alarm provides insights to develop a more informed litigation strategy and the peace of mind of knowing you're on top of things.

## Real-Time Litigation Alerts



Keep your litigation team up-to-date with **real-time alerts** and advanced team management tools built for the enterprise, all while greatly reducing PACER spend.

Our comprehensive service means we can handle Federal, State, and Administrative courts across the country.

## Advanced Docket Research



With over 230 million records, Docket Alarm's cloud-native docket research platform finds what other services can't. Coverage includes Federal, State, plus PTAB, TTAB, ITC and NLRB decisions, all in one place.

Identify arguments that have been successful in the past with full text, pinpoint searching. Link to case law cited within any court document via Fastcase.

## Analytics At Your Fingertips



Learn what happened the last time a particular judge, opposing counsel or company faced cases similar to yours.

Advanced out-of-the-box PTAB and TTAB analytics are always at your fingertips.

## API

Docket Alarm offers a powerful API (application programming interface) to developers that want to integrate case filings into their apps.

## LAW FIRMS

Build custom dashboards for your attorneys and clients with live data direct from the court.

Automate many repetitive legal tasks like conflict checks, document management, and marketing.

## FINANCIAL INSTITUTIONS

Litigation and bankruptcy checks for companies and debtors.

## E-DISCOVERY AND LEGAL VENDORS

Sync your system to PACER to automate legal marketing.