



The Bloomberg Terminal At A Glance

October 13 2011 | Filed Under » [Professional Education](#)



Comments <0



If you currently work in the finance industry, or have aspirations of doing so, chances are you have heard of a [Bloomberg terminal](#). This article will introduce you to one of the industry's most widely used sources for real-time financial information, and some of the functions the Bloomberg terminal is able to carry out. **TUTORIAL: [Economic Indicators](#)**

Design and Layout

The Bloomberg terminal, from the perspective of the end-user, is a Windows-based application, making it compatible with the popular Excel program, a very important aspect of the system for those in the finance industry. Bloomberg also offers users access to the application online and through [mobile devices](#), via its Bloomberg Anywhere service. For [portfolio managers](#) and brokers, having the ability to access real-time market information from almost anywhere in the world, is an incredibly convenient and important advantage of a Bloomberg subscription. (For related, see [Day Trading Strategies For Beginners](#).)

The first thing most people notice when they sit down in front of a Bloomberg terminal, is the keyboard. Although it is similar to a standard [desktop](#) keyboard, Bloomberg terminals substitute the function keys on a standard keyboard (i.e., F4) with market sector keys, such as CORP (corporate debt), EQUITY (equity shares) and CURRENCY (currency markets). Additionally, Bloomberg keyboards incorporate color coding to make use more intuitive, with market sectors colored yellow, the Cancel and Log-in keys colored red, and the common "Go" keys (i.e., Enter) colored green.

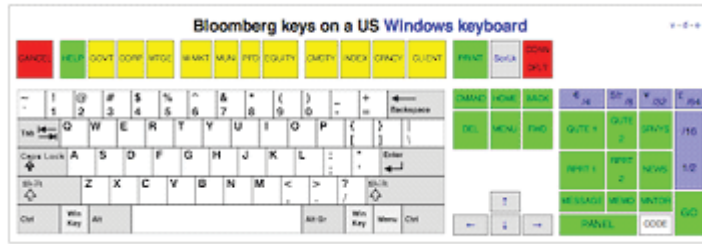


Image courtesy of Wikipedia

For those still relatively new to the terminal, let's take a look at some of its capabilities:

News

Although most people think about real-time financial market data, namely security values, when discussing Bloomberg, the Bloomberg terminal also offers real-time news updates from a multitude of websites, tickers and w. By simply typing "NEWS" in the search bar, a user will be provided with the most recent financial, and non-financi news headlines from around the world. Additionally, users can access media outlet websites, such as the New Yo Times. Bloomberg users can also search for archived news stories or search by subject.



News Feed Interface

Equities

When searching for publicly traded equity shares, Bloomberg allows users to search by name, exchange, country other such topics. Additionally, the equity menu allows users to view historical pricing on a stock (see image below read a description of the business, view any outstanding corporate debt the company may have, and view analyst reports and estimates for the stock, along with dozens of other features. This menu also allows users to search fo indexes such as the S&P 500 or Russell 2000. (For related reading, see *What's The Difference between the Dow Jones Industrial Average And the S&P 500?*)

<HELP> for explanation. Index HP

CLOSE/PRICE Page 1 / 6

SPX S&P 500 INDEX PRICE 1207.49

Range 9/16/10 to 9/16/11 Period 0 Daily HI 1363.61 ON 4/29/11
Market W mid/trd AVE 1260.67
LOW 1119.46 ON 8/ 8/11

DATE	PRICE	VOLUME	DATE	PRICE	VOLUME	DATE	PRICE	VOLUME
F 9/16	1207.49		F 8/26	1176.80	918MLN	F 8/ 5	1199.38	1.72BLN
T 9/15	1209.11	802MLN	T 8/25	1159.27	944MLN	T 8/ 4	1200.07	1.35BLN
W 9/14	1188.68	888MLN	W 8/24	1177.60	877MLN	W 8/ 3	1260.34	1.02BLN
T 9/13	1172.87	832MLN	T 8/23	1162.35	963MLN	T 8/ 2	1254.05	960MLN
M 9/12	1162.27	858MLN	M 8/22	1123.82	912MLN	M 8/ 1	1286.94	852MLN
F 9/ 9	1154.23	993MLN	F 8/19	1123.53	1.27BLN	F 7/29	1292.28	952MLN
T 9/ 8	1185.90	783MLN	T 8/18	1140.65	1.30BLN	T 7/28	1300.67	749MLN
W 9/ 7	1198.62	771MLN	W 8/17	1193.89	786MLN	W 7/27	1304.89	854MLN
T 9/ 6	1165.24	861MLN	T 8/16	1192.76	873MLN	T 7/26	1331.94	653MLN
M 9/ 5			M 8/15	1204.49	856MLN	M 7/25	1337.43	578MLN
F 9/ 2	1173.97	724MLN	F 8/12	1178.81	1.00BLN	F 7/22	1345.02	586MLN
T 9/ 1	1204.42	743MLN	T 8/11	1172.64	1.53BLN	T 7/21	1343.80	831MLN
W 8/31	1218.89	964MLN	W 8/10	1120.76	1.72BLN	W 7/20	1325.84	646MLN
T 8/30	1212.92	795MLN	T 8/ 9	1172.53	1.86BLN	T 7/19	1326.73	699MLN
M 8/29	1210.08	687MLN	M 8/ 8	1119.46	1.94BLN	M 7/18	1305.44	679MLN

Australia 61 2 3177 5600 Brazil 5511 3340 4500 Europe 44 20 7330 7500 Germany 49 65 3254 1210 Hong Kong 852 2377 2000
Japan 81 2 2201 8900 Singapore 65 4212 1000 U.S. 1 212 312 2000 Copyright 2011 Bloomberg Finance L.P.
SH 103141 6736-200-1 16-Sep-11 9:29:10 AM GMT+8 00

Equity Menu

Bloomberg also allows clients to compare and contrast equities side by side, offering a comparative analysis of an two equities. Comparison fields include [fundamental analysis](#), historical ratios and technical charting. In addition to comparative functionality, Bloomberg also includes screeners, allowing clients to screen for stocks using a multitude metrics. After running a screen, users can also filter results and create custom equity sets, which allow for a quick reference of real-time results for a portfolio of equities; very handy for traders, [brokers](#) and other such financial professionals.

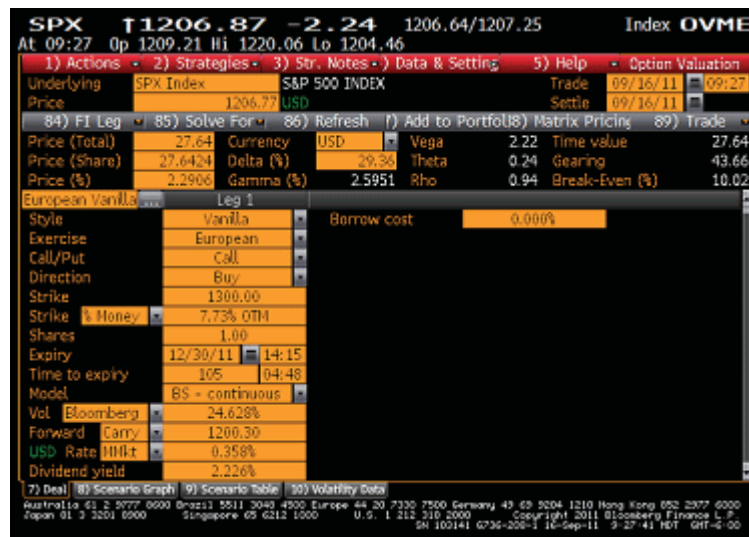
Fixed Income

Much like with equities, Bloomberg allows users to search for real-time data on [fixed income](#) securities. This includes corporate debt, municipal bonds and government bonds. Similar to the historical [price](#) screen for equities, we are able to view historical day-over-day changes in security values, along with implied yield-to-maturities, for any given day. Additionally, credit ratings and cost of capital information is available for fixed income securities. (Exposure to different asset classes is required to generate income, reduce risk and beat inflation. For more, see [How To Create A Model Fixed-Income Portfolio](#).)

American Express—Savings

Derivatives

One of Bloomberg's best features is its derivatives capabilities. Not only can clients find real-time values for securities such as exchange traded options, and [futures contracts](#), such as the active contract for WTI, but Bloomberg also allows users to value hard-to-price [derivatives](#). For OTC options, for example, Bloomberg lets users customize the option valuation models, to come up with an estimated value. A user can decide to value an OTC option on the S&P 500 using the continuous [Black-Scholes](#) model, using historical volatility (see image below), for example. Once prices are set, users can view the values of the Greeks associated with the option in question, to verify that their price estimate is in line with those expectations.



Derivatives, Using Historical Volatility

Another function popular with large banks and [institutional investors](#), is the Swap Manager tool. Swap Manager is highly customizable swap pricing utility, which allows users to input the parameters of a swap agreement and compare with an estimate for the value of that swap, at any given date in time (see image below). Additionally, clients can view underlying swap curves to determine that the underlying inputs match expected values. As the swap market continues to grow, the Swap Manager tool will no doubt gain more and more popularity with analysts. (Find out what makes currency swaps unique and slightly more complicated than other types of swaps. For more, see [Currency Swap Basics](#).)



Swap Manager Tool


Foreign Exchange

With the FX market being a 24-hour marketplace, Bloomberg is the ideal tool for FX participants. Users can view real-time rates for dozens of currencies, along with basis curves for most pairs, and rate information for a given currency. Additionally, with Bloomberg's ability to capture real-time news and economic updates, its FX capabilities are a very powerful tool for those trading in the foreign exchange market. (For related reading, see [Forex Basics: Setting Up](#)

[Account.](#))


The Bottom Line

We've only just begun to scrape the surface of the Bloomberg terminal's capabilities in this article. Several online tutorials are available to those interested in learning more, including those offered directly from Bloomberg itself. As well, more and more Colleges and Universities are offering Bloomberg courses, to help students gain early exposure to the most widely used tool for real-time financial [data](#) in the world of finance.



Sign Up For Professionals in the Money!

Sign Up



Exam Prep Quizzer
Practice for your professional exam!

by [Investopedia Staff](#)



Investopedia.com believes that individuals can excel at managing their financial affairs. As such, we strive to provide free educational content and tools to empower individual investors, including thousands of original and objective articles and tutorials on a wide variety of financial topics.

[Click Here to join Traders Laboratory - The Professional Traders Community](#)

More from Investopedia

[How To Create A Modern Fixed-Income Portfolio](#)
[Day Trading Strategies For Beginners](#)
[What's the difference between the Dow Jones Industrial Average and the S&P 500?](#)
[Ten Ways To Save Energy And Money](#)
[Would You Profit As A Day Trader?](#)

More from around the Web

[Economist Warns: 'The Real Crash Is Coming' \(Moneynews\)](#)
[What Are Annuities? \(Fox News\)](#)
[Warning: These Popular Companies Could Go Bankr Very Soon \(Street Authority\)](#)
[12 Stocks to Get Dividends Every Month \(Kiplinger\)](#)
[7 Majors That Can Put You in the Top 1% of Earners \(U.S. News University Directory\)](#)

Sponsored Links



American Express—Savings

A High Yield Savings Account With 0.85% APY—Learn More Now.
AmericanExpress.com/PersonalSavings



Get a FREE Risk Management Guide today!

With your guide you'll also receive personal advice from an experienced broker!
www.rjofutures.com



Lithium Prices are Skyrocketing

NVMN – Nova Mining Corporation executes new Lithium contracts. Hot new stock.
www.Nova-Mining.com

Explore Litigation Insights

Docket Alarm provides insights to develop a more informed litigation strategy and the peace of mind of knowing you're on top of things.

Real-Time Litigation Alerts



Keep your litigation team up-to-date with **real-time alerts** and advanced team management tools built for the enterprise, all while greatly reducing PACER spend.

Our comprehensive service means we can handle Federal, State, and Administrative courts across the country.

Advanced Docket Research



With over 230 million records, Docket Alarm's cloud-native docket research platform finds what other services can't. Coverage includes Federal, State, plus PTAB, TTAB, ITC and NLRB decisions, all in one place.

Identify arguments that have been successful in the past with full text, pinpoint searching. Link to case law cited within any court document via Fastcase.

Analytics At Your Fingertips



Learn what happened the last time a particular judge, opposing counsel or company faced cases similar to yours.

Advanced out-of-the-box PTAB and TTAB analytics are always at your fingertips.

API

Docket Alarm offers a powerful API (application programming interface) to developers that want to integrate case filings into their apps.

LAW FIRMS

Build custom dashboards for your attorneys and clients with live data direct from the court.

Automate many repetitive legal tasks like conflict checks, document management, and marketing.

FINANCIAL INSTITUTIONS

Litigation and bankruptcy checks for companies and debtors.

E-DISCOVERY AND LEGAL VENDORS

Sync your system to PACER to automate legal marketing.