

# EXHIBIT A

To Plaintiff's Original Complaint

*LoganTree LP v. Garmin International, Inc., et al.*  
United States District Court for the District of Kansas



[54] TRAINING AND SAFETY DEVICE, SYSTEM AND METHOD TO AID IN PROPER MOVEMENT DURING PHYSICAL ACTIVITY

[76] Inventor: Theodore L. Brann, P.O. Box 1897, Mission, Tex. 78572

[\*] Notice: This patent issued on a continued prosecution application filed under 37 CFR 1.53(d), and is subject to the twenty year patent term provisions of 35 U.S.C. 154(a)(2).

[21] Appl. No.: 08/976,228

[22] Filed: Nov. 21, 1997

[51] Int. Cl.<sup>7</sup> ..... A63B 69/00; G09B 9/00

[52] U.S. Cl. .... 434/247; 128/782; 600/595; 601/34; 482/8; 482/901; 340/686.1; 702/101

[58] Field of Search ..... 434/118, 247, 434/365; 482/3, 4, 6, 8, 9, 92, 137, 900-903; 128/897, 905, 782; 600/301, 502, 587, 594, 595; 601/5, 33, 34; 73/379.01, 379.06, 379.08; 340/573.1, 573.7, 686.1, 689; 364/167.12; 702/19, 41, 101, 141, 174

[56] References Cited

U.S. PATENT DOCUMENTS

Table of references cited including patent numbers, dates, inventors, and classification codes.

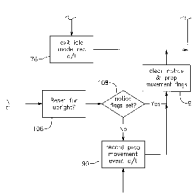
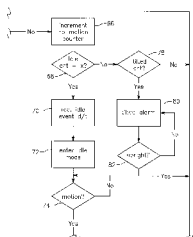
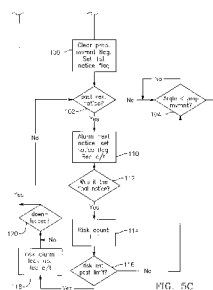
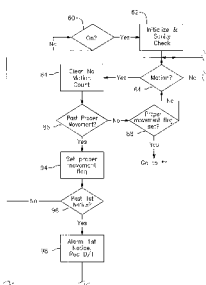
Table of references cited including patent numbers, dates, inventors, and classification codes.

Primary Examiner—Joe H. Cheng
Attorney, Agent, or Firm—Locke Liddell & Sapp LLP

[57] ABSTRACT

An electronic device, system and method to monitor and train an individual on proper motion during physical movement. The system employs an electronic device which tracks and monitors an individual's motion through the use of an accelerometer capable of measuring parameters associated with the individual's movement.

29 Claims, 9 Drawing Sheets



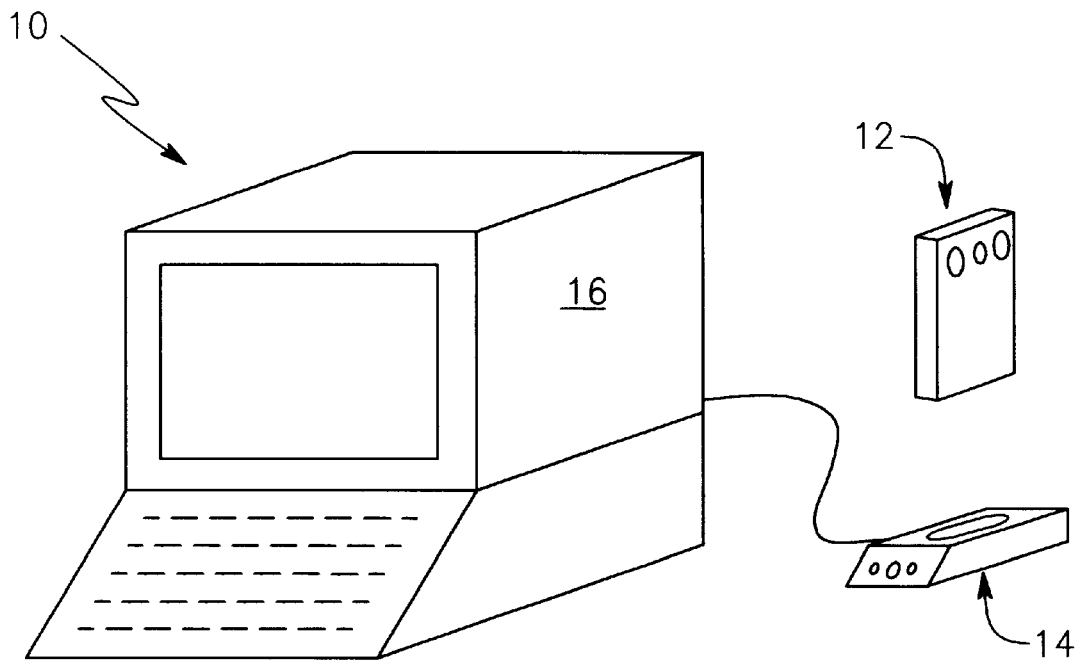


FIG. 1

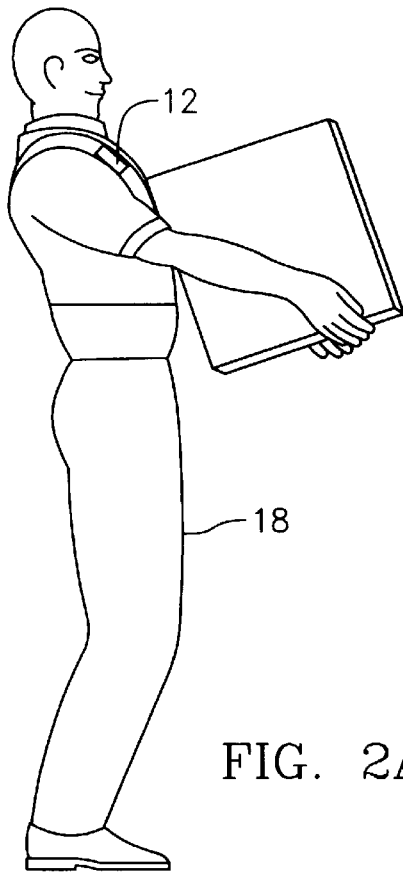


FIG. 2A

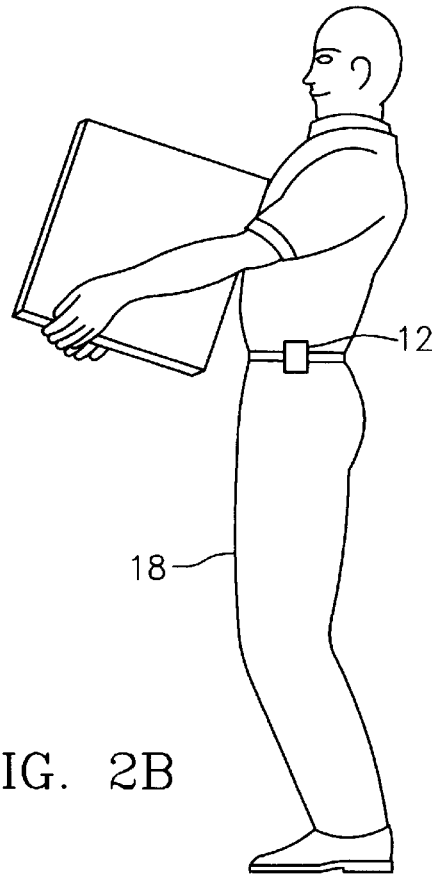


FIG. 2B

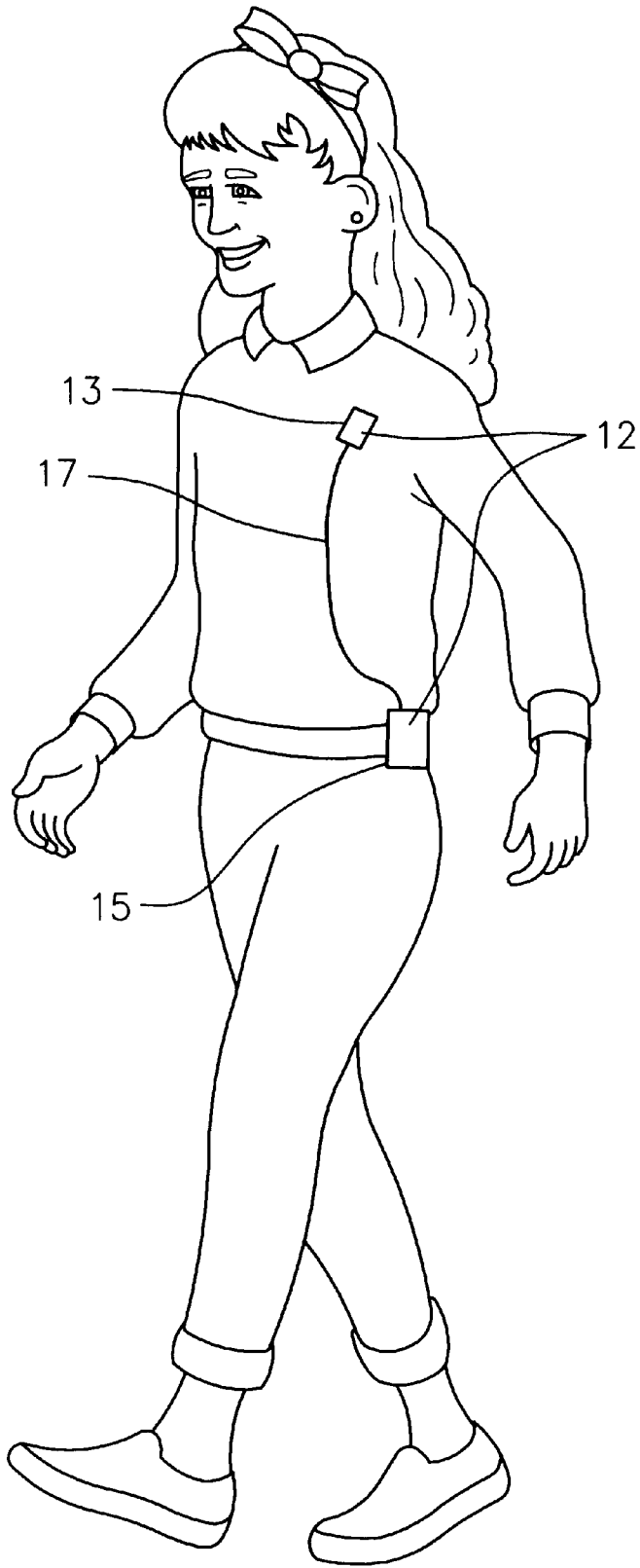


FIG. 2C

# Explore Litigation Insights

Docket Alarm provides insights to develop a more informed litigation strategy and the peace of mind of knowing you're on top of things.

## Real-Time Litigation Alerts



Keep your litigation team up-to-date with **real-time alerts** and advanced team management tools built for the enterprise, all while greatly reducing PACER spend.

Our comprehensive service means we can handle Federal, State, and Administrative courts across the country.

## Advanced Docket Research



With over 230 million records, Docket Alarm's cloud-native docket research platform finds what other services can't. Coverage includes Federal, State, plus PTAB, TTAB, ITC and NLRB decisions, all in one place.

Identify arguments that have been successful in the past with full text, pinpoint searching. Link to case law cited within any court document via Fastcase.

## Analytics At Your Fingertips



Learn what happened the last time a particular judge, opposing counsel or company faced cases similar to yours.

Advanced out-of-the-box PTAB and TTAB analytics are always at your fingertips.

## API

Docket Alarm offers a powerful API (application programming interface) to developers that want to integrate case filings into their apps.

## LAW FIRMS

Build custom dashboards for your attorneys and clients with live data direct from the court.

Automate many repetitive legal tasks like conflict checks, document management, and marketing.

## FINANCIAL INSTITUTIONS

Litigation and bankruptcy checks for companies and debtors.

## E-DISCOVERY AND LEGAL VENDORS

Sync your system to PACER to automate legal marketing.