

# Exhibit J

**(12) United States Patent**  
**Petite et al.**

**(10) Patent No.: US 6,437,692 B1**  
**(45) Date of Patent: Aug. 20, 2002**

**(54) SYSTEM AND METHOD FOR MONITORING AND CONTROLLING REMOTE DEVICES**

**(75) Inventors:** **Thomas D. Petite**, Douglasville;  
**Richard M. Huff**, Conyers, both of GA (US)

**(73) Assignee:** **StatSignal Systems, Inc.**, Atlanta, GA (US)

**(\*) Notice:** Subject to any disclaimer, the term of this patent is extended or adjusted under 35 U.S.C. 154(b) by 0 days.

**(21) Appl. No.:** **09/439,059**

**(22) Filed:** **Nov. 12, 1999**

**Related U.S. Application Data**

**(63)** Continuation-in-part of application No. 09/271,517, filed on Mar. 18, 1999, which is a continuation-in-part of application No. 09/102,178, filed on Jun. 22, 1998, which is a continuation-in-part of application No. 09/172,554, filed on Oct. 14, 1998, now Pat. No. 6,028,522, which is a continuation-in-part of application No. 09/412,895, filed on Oct. 5, 1999, now Pat. No. 6,218,953

**(60)** Provisional application No. 60/146,817, filed on Aug. 2, 1999.

**(51) Int. Cl.<sup>7</sup>** ..... **G08B 21/00**

**(52) U.S. Cl.** ..... **340/540; 340/531; 340/539; 340/3.1; 340/426; 340/521; 340/870.01; 340/870.03; 340/870.07; 340/870.08; 340/870.16; 340/870.17; 700/108; 702/56**

**(58) Field of Search** ..... **340/531, 539, 340/3.1, 426, 540, 521, 870.01, 870.03, 870.07, 870.08, 870.16, 870.17, 988; 700/108; 343/711, 700 R, 720; 702/56**

**(56) References Cited**

**U.S. PATENT DOCUMENTS**

5,212,645	A *	5/1993	Wildes et al. ....	700/108
5,736,965	A *	4/1998	Mosebrook et al. ....	343/702
5,774,052	A *	6/1998	Hamm et al. ....	340/540
5,845,230	A *	12/1998	Lamberson .....	702/56
5,880,677	A *	3/1999	Lestician .....	340/3.1
5,917,405	A *	6/1999	Joao .....	340/426
6,023,223	A *	2/2000	Baxter, Jr. ....	340/531
6,060,994	A *	5/2000	Chen .....	340/521

\* cited by examiner

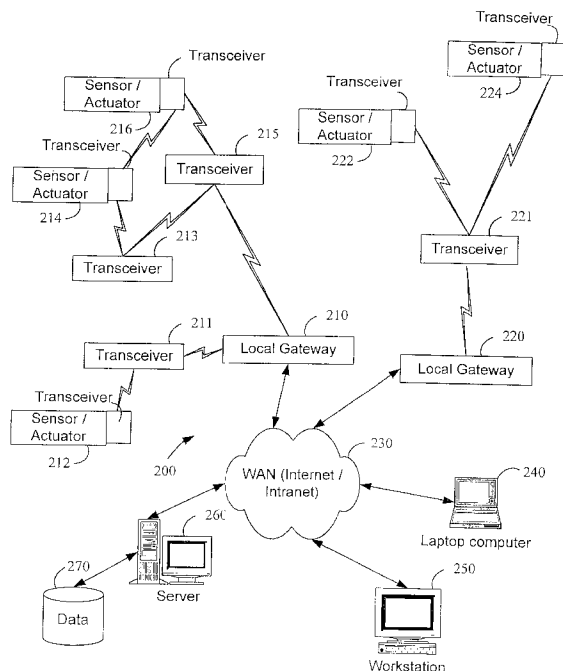
*Primary Examiner*—Benjamin C. Lee

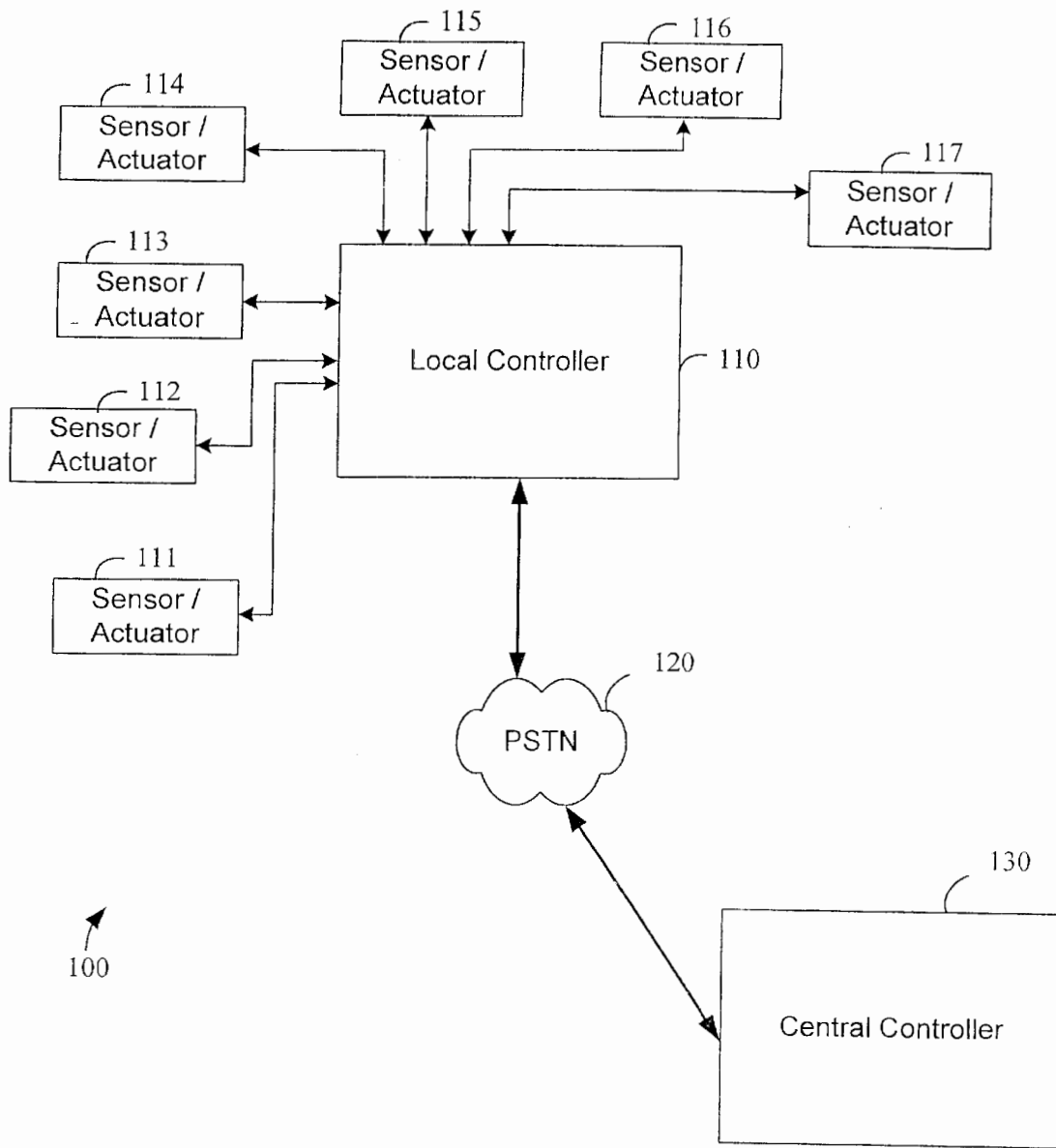
*(74) Attorney, Agent, or Firm*—Thomas, Kayden, Horstemeyer & Risley

**(57) ABSTRACT**

The present invention is generally directed to a system for monitoring a variety of environmental and/or other conditions within a defined remotely located region. In accordance with one aspect of the invention, a system is configured to monitor utility meters in a defined area. The system is implemented by using a plurality of wireless transmitters, wherein each wireless transmitter is integrated into a sensor adapted to monitor a particular data input. The system also includes a plurality of transceivers that are dispersed throughout the region at defined locations. The system uses a local gateway to translate and transfer information from the transmitters to a dedicated computer on a network. The dedicated computer, collects, compiles, and stores the data for retrieval upon client demand across the network. The computer further includes means for evaluating the received information and identifying an appropriate control signal, the system further including means for applying the control signal at a designated actuator.

**64 Claims, 18 Drawing Sheets**





**FIG. 1**  
**(PRIOR ART)**

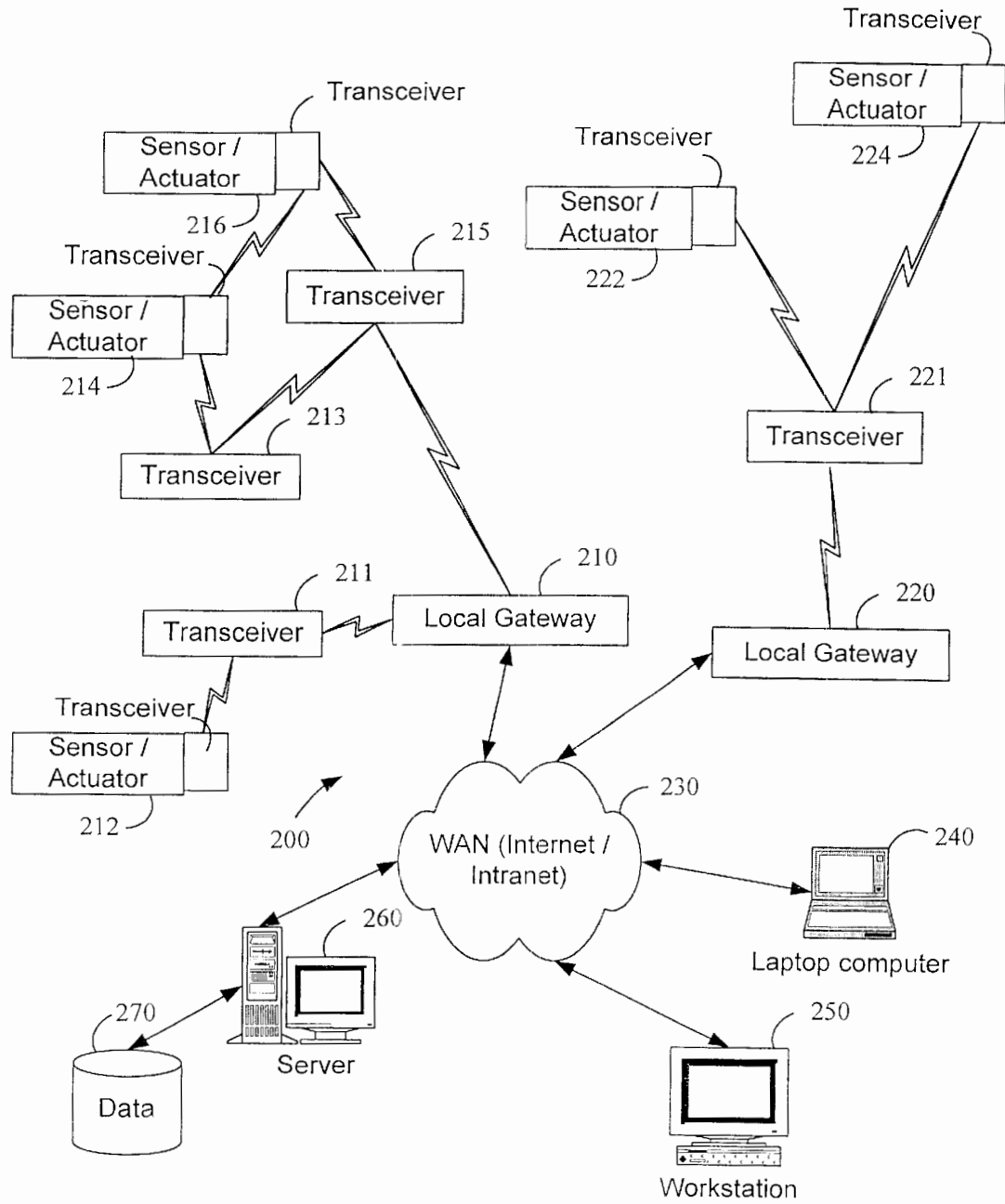


FIG. 2

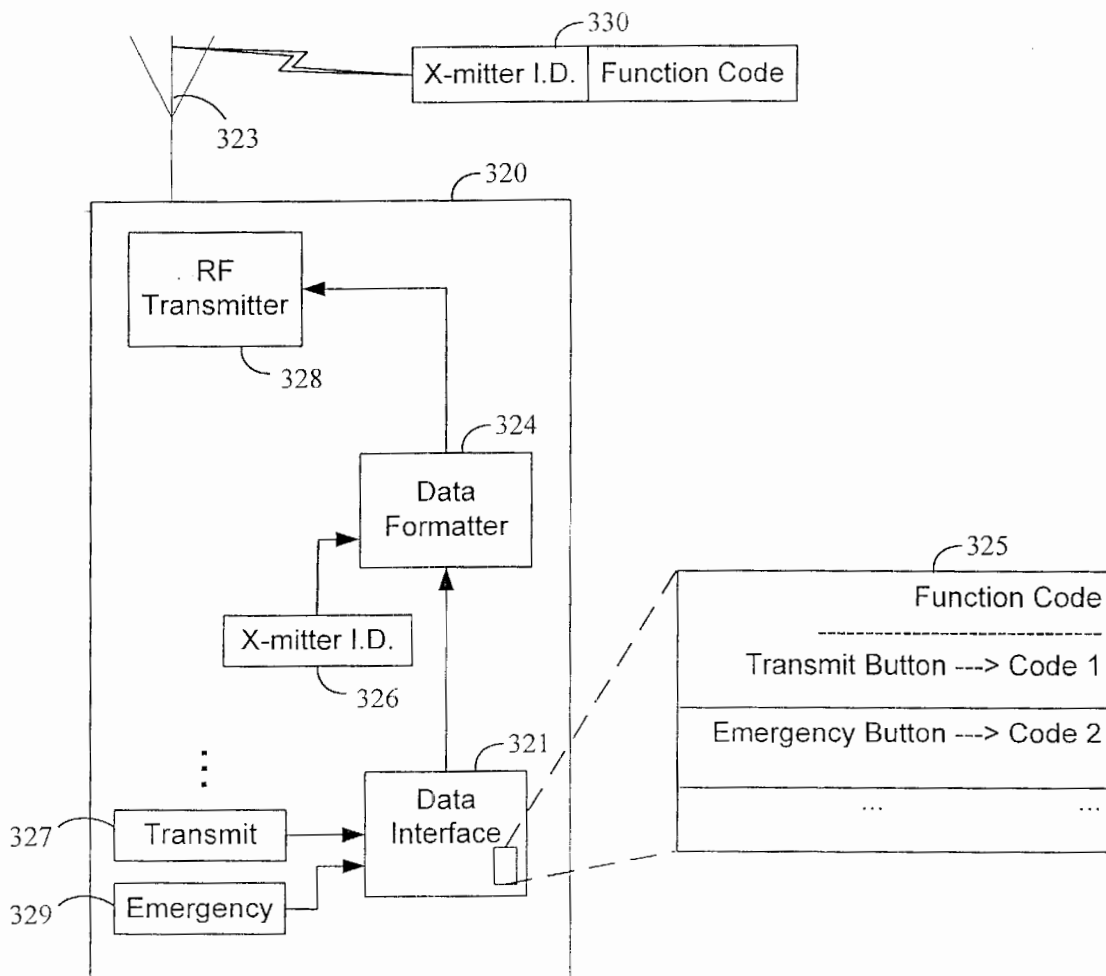


FIG. 3A

# Explore Litigation Insights

Docket Alarm provides insights to develop a more informed litigation strategy and the peace of mind of knowing you're on top of things.

## Real-Time Litigation Alerts



Keep your litigation team up-to-date with **real-time alerts** and advanced team management tools built for the enterprise, all while greatly reducing PACER spend.

Our comprehensive service means we can handle Federal, State, and Administrative courts across the country.

## Advanced Docket Research



With over 230 million records, Docket Alarm's cloud-native docket research platform finds what other services can't. Coverage includes Federal, State, plus PTAB, TTAB, ITC and NLRB decisions, all in one place.

Identify arguments that have been successful in the past with full text, pinpoint searching. Link to case law cited within any court document via Fastcase.

## Analytics At Your Fingertips



Learn what happened the last time a particular judge, opposing counsel or company faced cases similar to yours.

Advanced out-of-the-box PTAB and TTAB analytics are always at your fingertips.

## API

Docket Alarm offers a powerful API (application programming interface) to developers that want to integrate case filings into their apps.

## LAW FIRMS

Build custom dashboards for your attorneys and clients with live data direct from the court.

Automate many repetitive legal tasks like conflict checks, document management, and marketing.

## FINANCIAL INSTITUTIONS

Litigation and bankruptcy checks for companies and debtors.

## E-DISCOVERY AND LEGAL VENDORS

Sync your system to PACER to automate legal marketing.