

EXHIBIT B

Meet the iTero Element Scanner

The iTero Element Intraoral Scanner is designed to fit seamlessly into your practice. Whether you are a general practitioner or orthodontist, the iTero Element intraoral scanner is designed to deliver speed, reliability, intuitive operations, and outstanding visualization capabilities.

COMPACT FOOTPRINT

With the iTero Element scanner, you can fit high-precision scanning power almost anywhere. Choose between two form factors for the option that best fits your practice.

ADVANCED WAND FEATURES

The wand features built-in controls, including side buttons and touchpad for user interface control. Integrated gyro technology lets you rotate models on screen. Plug and play wand cable quickly connects and disconnects to the base unit. And the patent pending ITO defogging system defogs instantly without needing air or extended warming.

CERTIFIED CONNECTIVITY WORKFLOWS

iTero Element scans are engineered to work with the Invisalign system, the exclusive Invisalign Outcome Simulator, OrthoCAD®, and OrthoCAD Viewer. It's also designed to connect to restorative and orthodontic labs, third-party treatment planning, custom implant abutment, chairside milling, and lab CAD/CAM systems.

CUSTOM WHEEL STAND OPTION

Move the iTero Element intraoral scanner easily between operatories.

20X

FASTER SPEED

iTero Element image sensor is designed to enable 20X faster scan speed versus the previous iTero scanner.

6,000

FRAMES PER SECOND

The iTero Element scanner is engineered to capture 6,000 frames per second

3D

HIGH-IMPACT VISUALIZATION

Show patients exactly what you see for more effective chairside communication.

40%

SMALLER AND LIGHTER

The iTero Element wand is smaller and lighter than previous iTero scanners.

Industry-leading, open-choice imaging lets you view images in 3D. Easy visualization improves visibility and chairside communication with patients.

HIGH-DEFINITION MULTI-TOUCH DISPLAY

Scanned images appear instantly with crisp definition on the 19" high- definition, multi-touch display. The display also works with latex, vinyl, and nitrile gloves.

INTUITIVE OPERATION

Intuitive operation can transform clinical workflows. Spin, pinch zoom, and process images with a touch.

TIME SAVINGS

With a scan capture time of 40-50 milliseconds, the iTero Element scanner is designed to capture 20 scans per second.

COLOR SCANNING

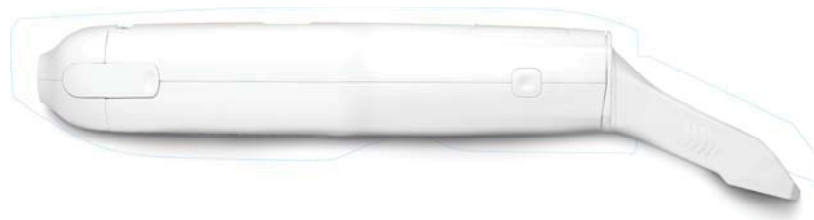
Vibrant color allows practitioners to easily distinguish between gingival and dental tissue for more precise clinical evaluation.

CONVENIENT COUNTER STAND OPTION

Integrate the iTero Element scanner as a stationary unit within the operatory.

Simultaneously Smart and Powerful

In addition to its sleek good looks, the iTero Element intraoral scanner includes intelligence designed to help you work even smarter. You can eliminate extra process steps during intraoral scanning because the iTero Element scanner is designed to automate those for you.



SMALLER WAND

100% smaller and lighter than the previous iTero custom wand



SCAN IN MOTION

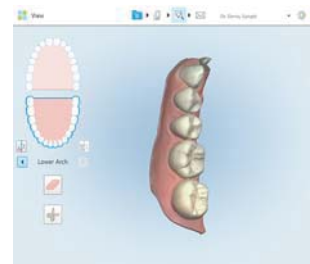
Continuous scanning design lets you scan in motion. The software automatically detects and repositions scanning start and stop points when you move to a new scanning position within the scanned segment.

And while you are scanning, the iTero Element scanner is engineered to simultaneously process the scan. It automatically stitches together images for rendering in the correct order, adapts to changes in positioning, and detects and removes soft tissue. Capture everything and

view exactly what you need to see.

SCAN IN COLOR

Color scanning gives you a significant leap forward in visualization. The color sensor is integrated in the iTero Element scanner, and the patented dual-aperture lens system is designed to simultaneously capture 2D images in color with highly accurate 3D laser scanning. Color scanning can make it easier to distinguish between gingival and tooth structures for a more precise clinical evaluation.



SCAN AND SAVE DATA

The iTero Element intraoral scanner is designed to automatically save scan data every two seconds and save it to the system's hard disk. There's no need for a battery backup. Even in the event of a power outage, scan data is safe, so you don't have to worry about losing your work.

iTero Element scanner model may not be available in all markets. Please consult with your local Align Technology office.

[Back to Top](#) ^

© 2016 Align Technology, Inc.

[Recommend](#)

Follow [@iTeroScanner](#)

[Privacy \(/en-us/privacy-policy\)](#) | [Terms of Use \(/en-us/terms-of-use\)](#)

[English \(US\) \(/en-us/language_select\)](#)