
EXHIBIT S

1. A semiconductor device, comprising:

(A) an element isolation region formed on a semiconductor substrate;

(B1) a first active region which comprises the semiconductor substrate surrounded by the element isolation region;

(C1) a first gate conductor film which is formed across the first active region and the element isolation region, and has a substantially constant dimension in a gate length direction;

(D) an interlayer insulating film formed on the first gate conductor film; and

(E1) a first gate contact which passes through the interlayer insulating film, and is connected to the first gate conductor film wherein

(E1) the first gate contact has a dimension in the gate length direction larger than (C1) the first gate conductor film,

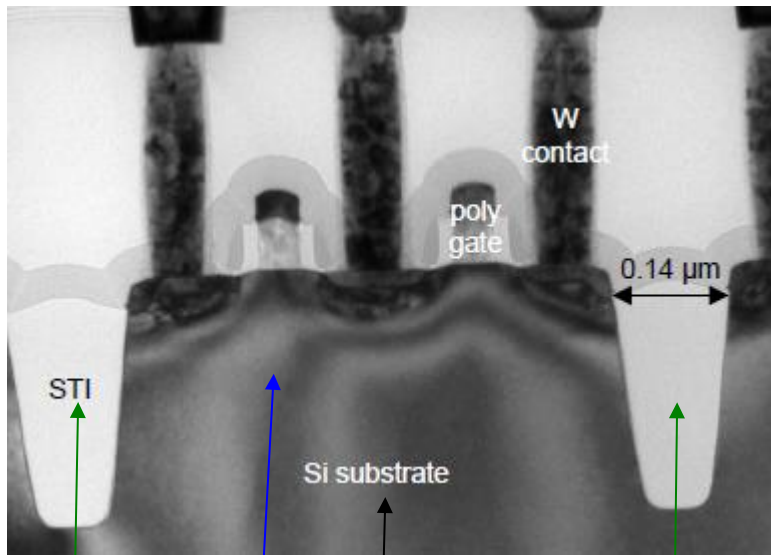
(E1) the first gate contact is connected to a part located on (C1) the first gate conductor film and on (A) the element isolation region, and

(E1) the first gate contact is not connected to a part located on (C1) the first gate conductor film and on (B1) the first active region.

Claim 1

A semiconductor device, comprising: **(A) an element isolation region** formed on a semiconductor substrate; **(B1) a first active region** which comprises the semiconductor substrate surrounded by the element isolation region;

(Cross section : gate length direction)

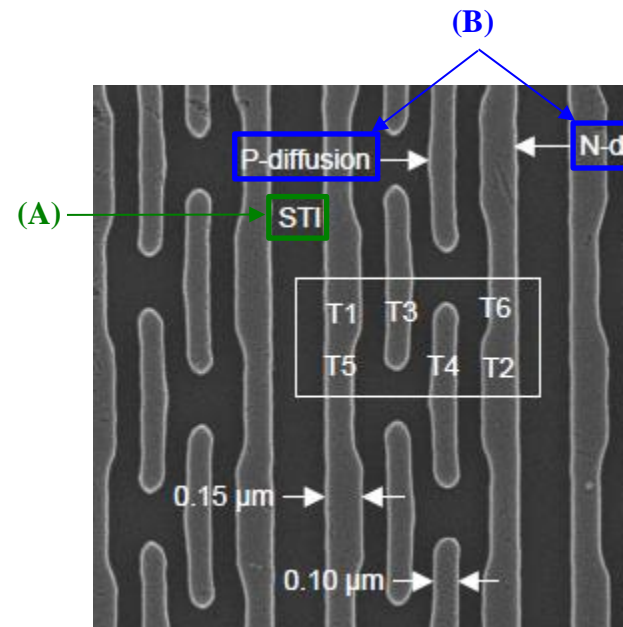


(A)

(B)

a semiconductor substrate

(Plane : diffusion level)



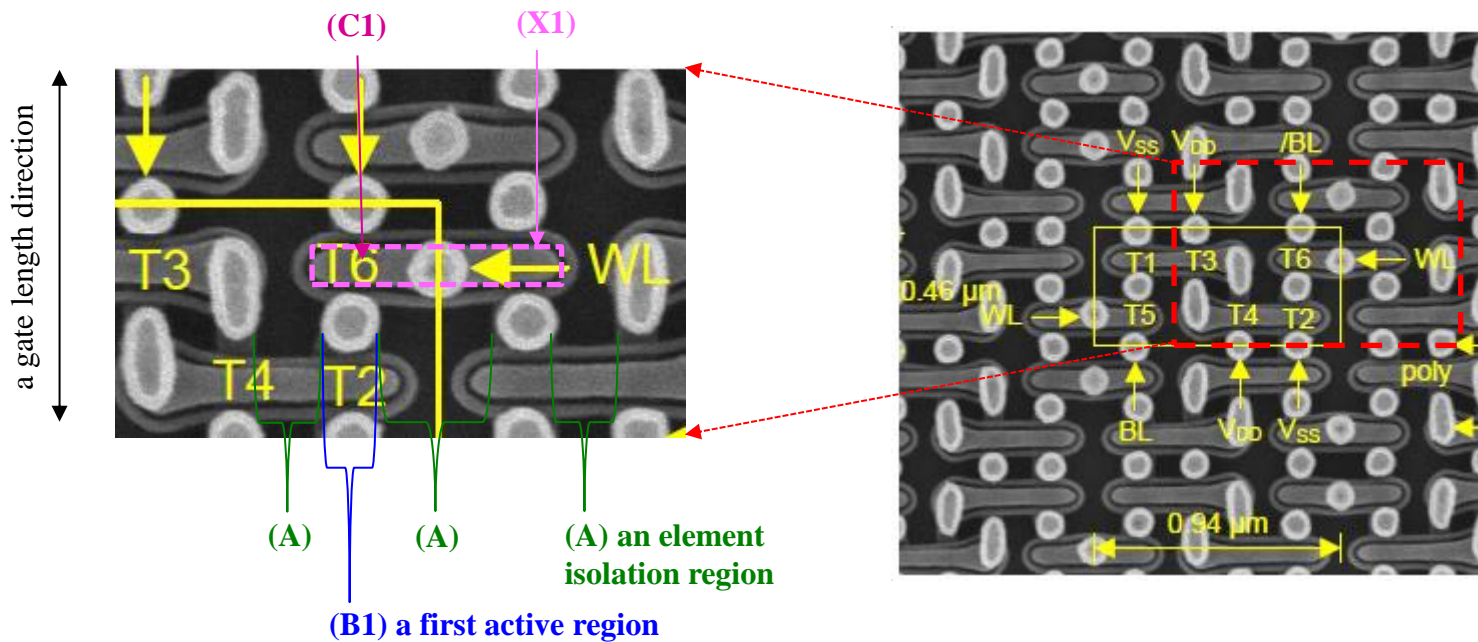
(A)

(B)

Claim 1

(C1) a first gate conductor film which is formed across the first active region and the element isolation region, and has substantially constant dimension in a gate length direction;

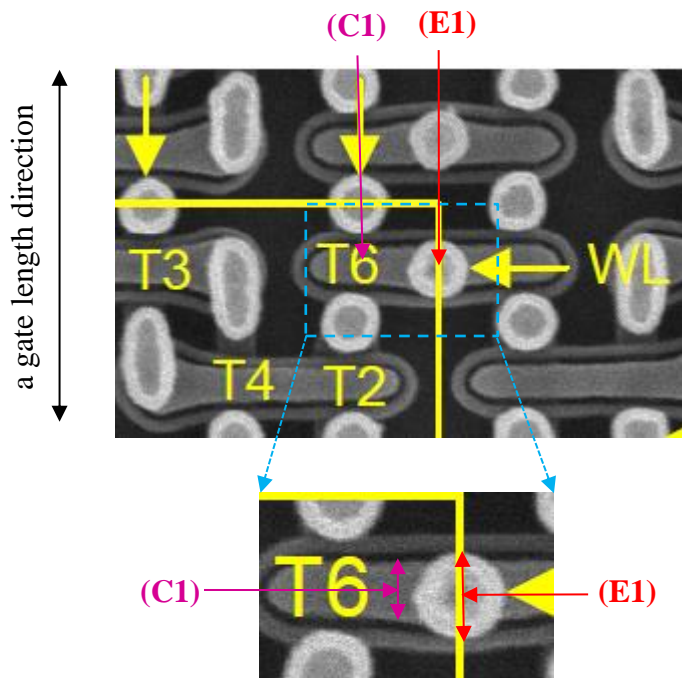
(Plane : gate level)



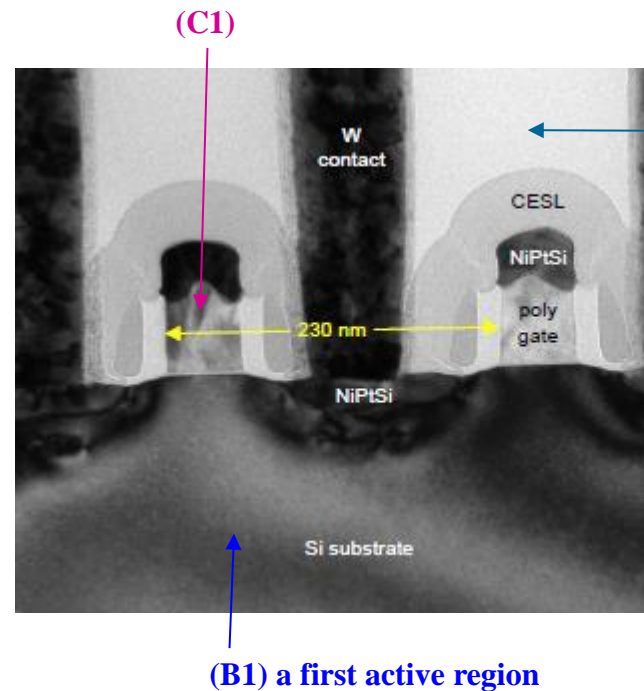
Claim 1

(D) an interlayer insulating film formed on the first gate conductor film; and (E1) a first gate contact which passes through the interlayer insulating film, and is connected to the first gate conductor film, wherein (E1) the first gate contact has a diameter in a gate length direction larger than (C1) the first gate conductor film,

(Plane : gate level)



(Cross section : gate length direction)



Explore Litigation Insights

Docket Alarm provides insights to develop a more informed litigation strategy and the peace of mind of knowing you're on top of things.

Real-Time Litigation Alerts



Keep your litigation team up-to-date with **real-time alerts** and advanced team management tools built for the enterprise, all while greatly reducing PACER spend.

Our comprehensive service means we can handle Federal, State, and Administrative courts across the country.

Advanced Docket Research



With over 230 million records, Docket Alarm's cloud-native docket research platform finds what other services can't. Coverage includes Federal, State, plus PTAB, TTAB, ITC and NLRB decisions, all in one place.

Identify arguments that have been successful in the past with full text, pinpoint searching. Link to case law cited within any court document via Fastcase.

Analytics At Your Fingertips



Learn what happened the last time a particular judge, opposing counsel or company faced cases similar to yours.

Advanced out-of-the-box PTAB and TTAB analytics are always at your fingertips.

API

Docket Alarm offers a powerful API (application programming interface) to developers that want to integrate case filings into their apps.

LAW FIRMS

Build custom dashboards for your attorneys and clients with live data direct from the court.

Automate many repetitive legal tasks like conflict checks, document management, and marketing.

FINANCIAL INSTITUTIONS

Litigation and bankruptcy checks for companies and debtors.

E-DISCOVERY AND LEGAL VENDORS

Sync your system to PACER to automate legal marketing.