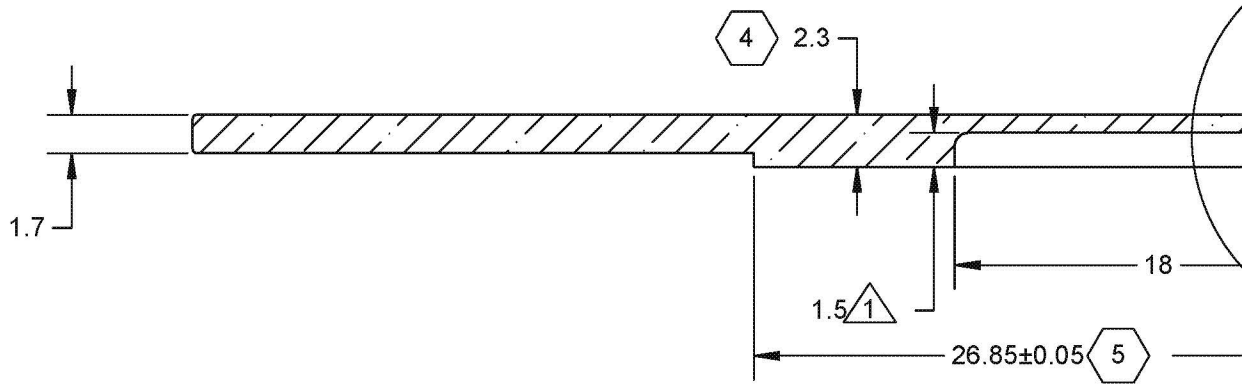
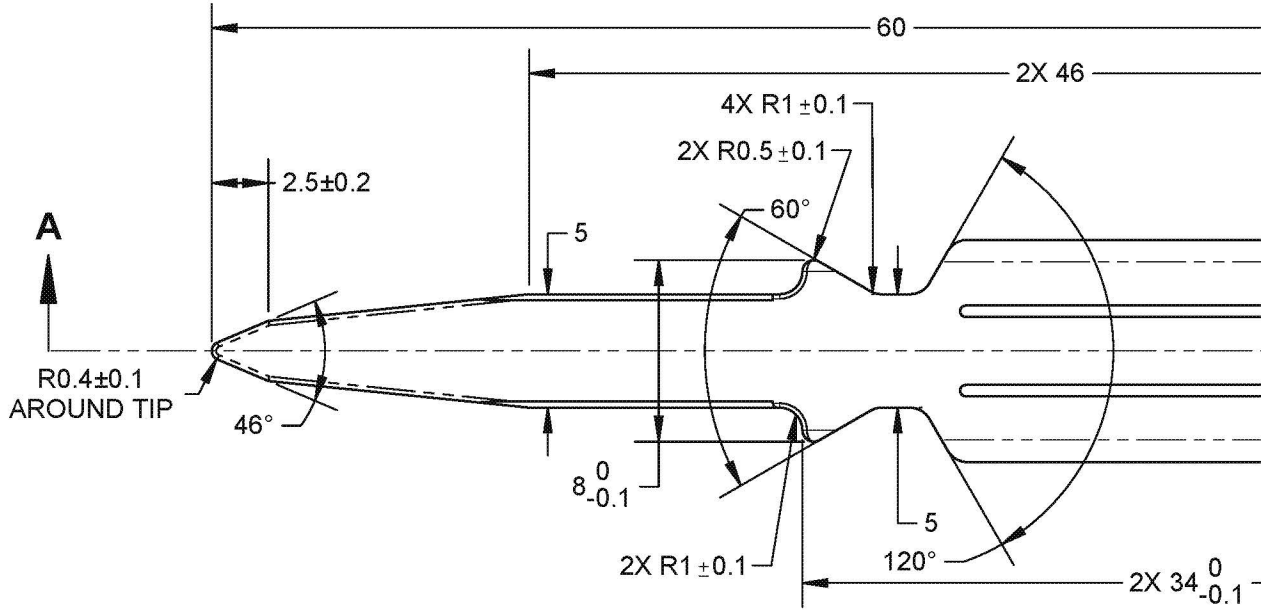


# **EXHIBIT 7**

**TO THE DECLARATION OF BRIAN J. NISBET  
IN SUPPORT OF DEFENDANTS' MOTION  
FOR SUMMARY JUDGMENT OR, IN THE  
ALTERNATIVE, SUMMARY ADJUDICATION**

D  
C  
B  
A



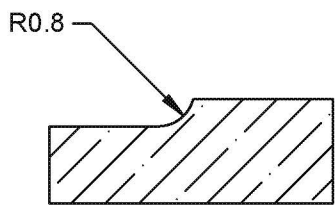
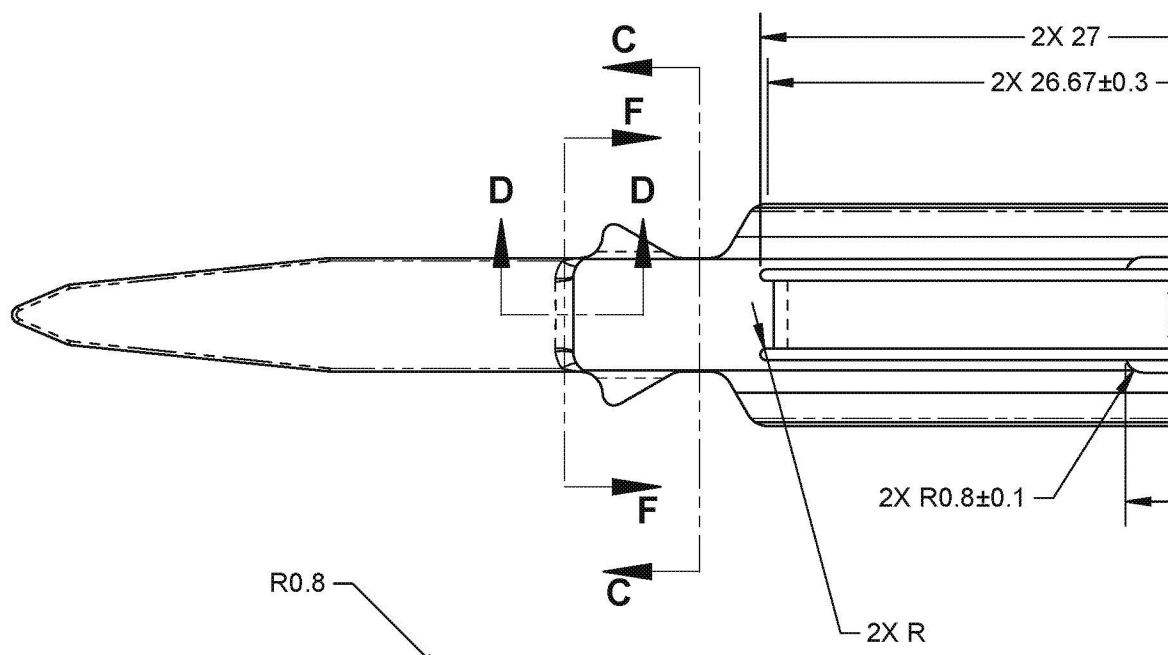
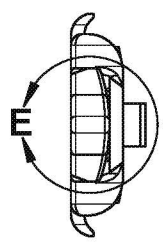
**SECTION A-A**

**NOTES:**

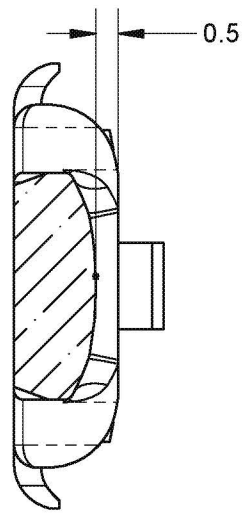
- ① DIMENSION TO BE MEASURED BEFORE SLOT IS CUT.
- 2. SURFACE FINISH: MASS MEDIA, GRADE #1, ⑦ PER ALPHATEC SPINE SPEC. AS-F-0016.
- 3. SURFACE FINISH: TITANIUM ANODIZE, TYPE 2, ⑧ PER ALPHATEC SPINE SPEC. AS-C-0005.
- ④ LASER MARK AS SHOWN PER ALPHATEC SPINE SPEC. AS-E-0001: ⑨ ALPHATEC LOGO, PART NO., LOT NO., AND LINE, TEXT TO BE 1.5MM±0.5MM. FONT: ARIAL

18068	A	INITIAL PRODUCTION RELEASE. LATCH PLACEMENT MOVED, CO ELIMINATED, THICKNESS INCREASED.
17422	03	DRAWING UPDATED WITH FEEDBACK
17371	02	LENGTH IS 60, WAS 60.4; DIM 1 WAS 27.75; ADD 0.5 RADIUS

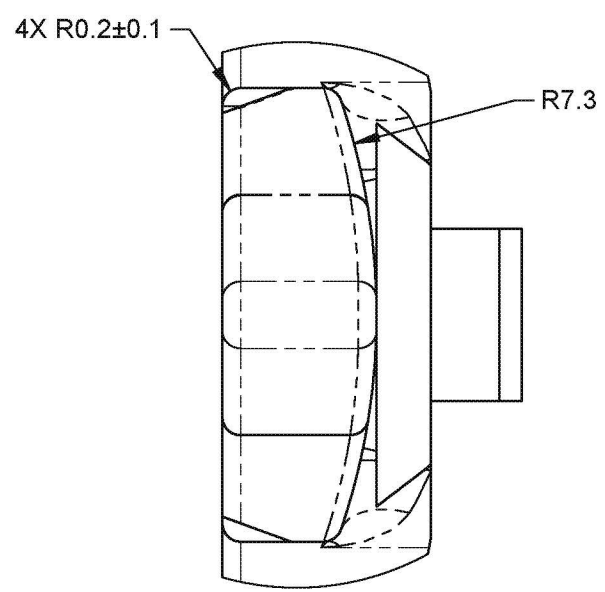
D  
C  
B  
A



**SECTION D-D**  
6 : 1



**SECTION F-F**  
6 : 1



**DETAIL E**  
12 : 1

