

# Exhibit B



(12) **United States Patent**  
**Lee et al.**

(10) **Patent No.:** **US 7,256,486 B2**  
(45) **Date of Patent:** **Aug. 14, 2007**

(54) **PACKAGING DEVICE FOR SEMICONDUCTOR DIE, SEMICONDUCTOR DEVICE INCORPORATING SAME AND METHOD OF MAKING SAME**

6,191,477 B1 *	2/2001	Hashemi .....	257/706
6,268,654 B1 *	7/2001	Glenn et al. ....	257/704
6,362,525 B1	3/2002	Rahim	
6,383,835 B1	5/2002	Hata et al.	
6,620,720 B1 *	9/2003	Moyer et al. ....	438/612
6,707,247 B2	3/2004	Murano	
6,828,510 B1	12/2004	Asai et al.	
7,098,593 B2 *	8/2006	Teng .....	313/581
2002/0139990 A1 *	10/2002	Suehiro et al. ....	257/99

(75) Inventors: **Kong Weng Lee**, Penang (MY); **Kee Yean Ng**, Penang (MY); **Yew Cheong Kuan**, Penang (MY); **Gin Ghee Tan**, Penang (MY); **Cheng Why Tan**, Penang (MY)

(73) Assignee: **Avago Technologies ECBU IP (Singapore) Pte. Ltd.**, Singapore (SG)

(\* ) Notice: Subject to any disclaimer, the term of this patent is extended or adjusted under 35 U.S.C. 154(b) by 0 days.

(21) Appl. No.: **10/608,605**

(22) Filed: **Jun. 27, 2003**

(65) **Prior Publication Data**  
US 2004/0262738 A1 Dec. 30, 2004

(51) **Int. Cl.**  
**H01L 29/22** (2006.01)  
(52) **U.S. Cl.** ..... **257/690; 257/784; 257/690**  
(58) **Field of Classification Search** ..... **257/690, 257/784, 700, 689, 774, 783, 99, 100; 361/707, 361/718, 719, 706, 717, 720**  
See application file for complete search history.

(56) **References Cited**  
U.S. PATENT DOCUMENTS  
2,907,925 A 10/1959 Parsons  
5,006,673 A 4/1991 Freyman et al.  
5,177,593 A \* 1/1993 Abe ..... 257/98  
5,298,687 A 3/1994 Rapoport et al.  
5,440,075 A 8/1995 Kawakita et al.  
5,640,048 A \* 6/1997 Selna ..... 257/738  
5,670,797 A 9/1997 Okazaki  
5,986,885 A \* 11/1999 Wyland ..... 361/704  
6,084,295 A \* 7/2000 Horiuchi et al. .... 257/690

(Continued)

**OTHER PUBLICATIONS**

Syd R. Wilson, Clarence J. Tracy, and John L. Freeman, Jr., "Handbook of Multilevel Metallization for Integrated Circuits," N oyes Publ., Westwood, New Jersey (1993), pp. 868-872.\*

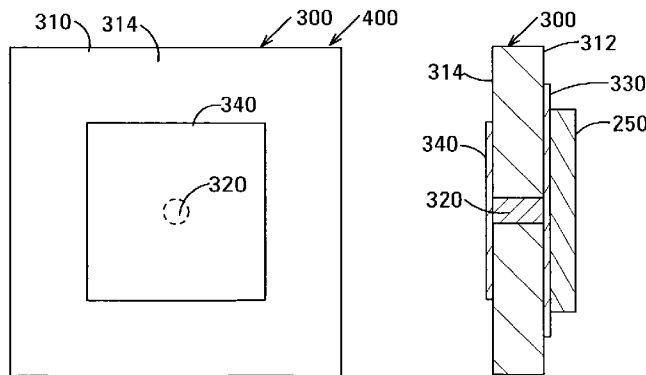
(Continued)

*Primary Examiner*—Sara Crane

(57) **ABSTRACT**

The packaging device includes a substrate, a mounting pad, a connecting pad and an interconnecting element. The substrate is substantially planar and has opposed major surfaces. The mounting pad is conductive and is located on one of the major surfaces. The connecting pad is conductive and is located on the other of the major surfaces. The conductive interconnecting element extends through the substrate and electrically interconnects the mounting pad and the connecting pad. The packaging device has a volume that is only a few times that of the semiconductor die and can be fabricated from materials that can withstand high-temperature die attach processes. The packaging device can be configured as the only packaging device used in the semiconductor device or as a submount for a semiconductor die that requires a high-temperature die attach process.

**6 Claims, 8 Drawing Sheets**



**US 7,256,486 B2**

Page 2

---

U.S. PATENT DOCUMENTS

2002/0179335 A1 12/2002 Curcio et al.  
2003/0017645 A1 1/2003 Kabayashi et al.  
2003/0020126 A1 1/2003 Sakamoto et al.  
2003/0040138 A1 2/2003 Kobayashi et al.  
2003/0168256 A1 9/2003 Chien

OTHER PUBLICATIONS

Electronic Packaging and Production, "Innovative PCB Reinforcement," (Feb. 1997), p. 1.\*  
Johannes Adam, "New Correlations Between Electrical Current and Temperature Rise in PCB Traces," Proc. 20<sup>th</sup> IEEE Semi-Therm Symp., (Mar. 2004), pp. 1-8.\*

\* cited by examiner

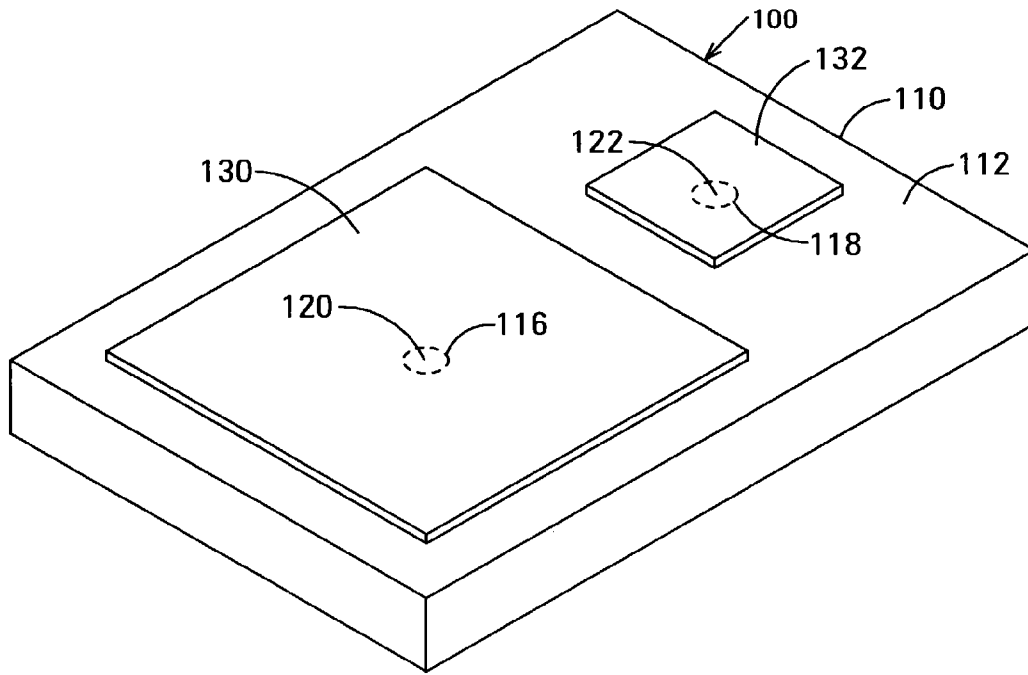


FIG. 1A

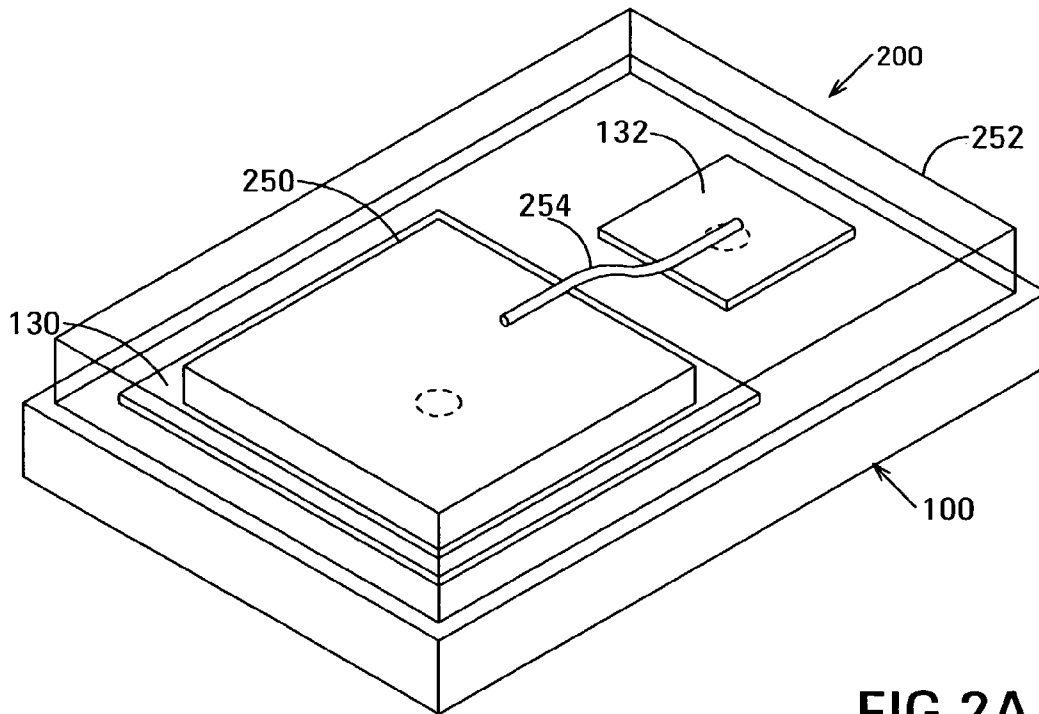


FIG. 2A

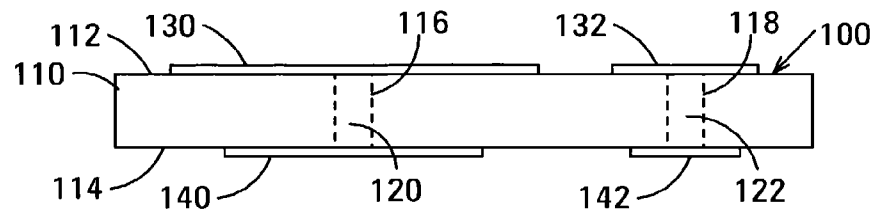


FIG. 1B

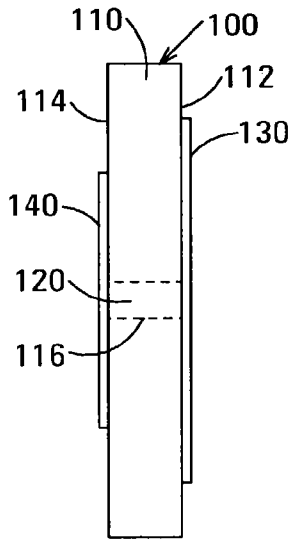


FIG. 1C

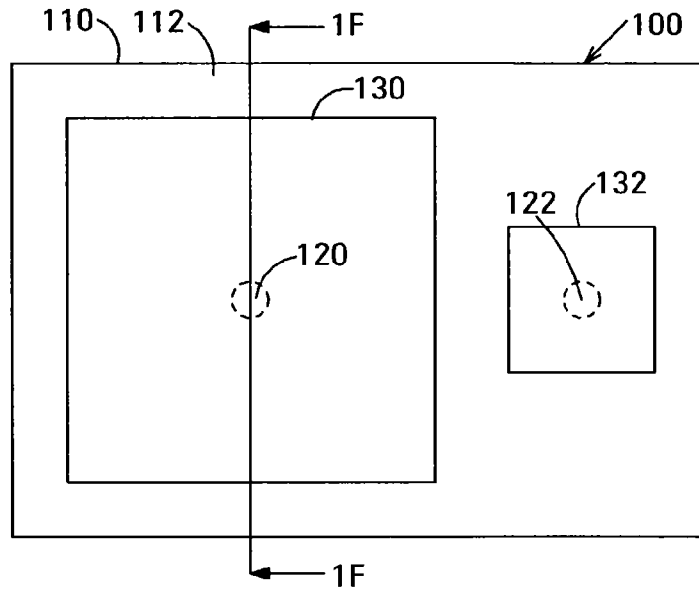


FIG. 1D

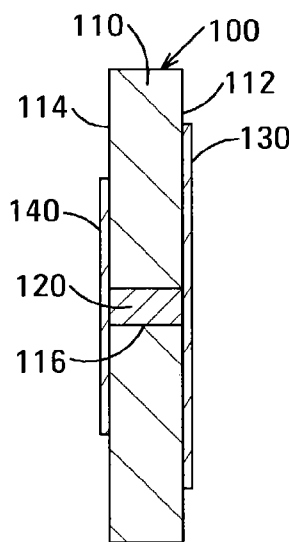


FIG. 1F

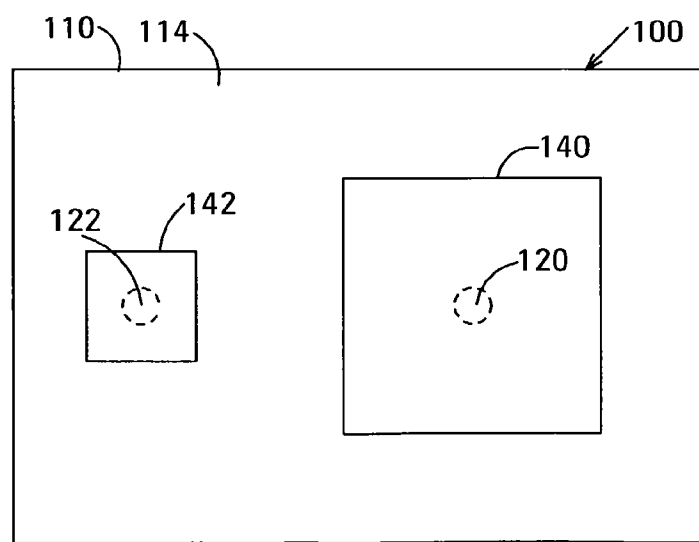


FIG. 1E

# Explore Litigation Insights

Docket Alarm provides insights to develop a more informed litigation strategy and the peace of mind of knowing you're on top of things.

## Real-Time Litigation Alerts



Keep your litigation team up-to-date with **real-time alerts** and advanced team management tools built for the enterprise, all while greatly reducing PACER spend.

Our comprehensive service means we can handle Federal, State, and Administrative courts across the country.

## Advanced Docket Research



With over 230 million records, Docket Alarm's cloud-native docket research platform finds what other services can't. Coverage includes Federal, State, plus PTAB, TTAB, ITC and NLRB decisions, all in one place.

Identify arguments that have been successful in the past with full text, pinpoint searching. Link to case law cited within any court document via Fastcase.

## Analytics At Your Fingertips



Learn what happened the last time a particular judge, opposing counsel or company faced cases similar to yours.

Advanced out-of-the-box PTAB and TTAB analytics are always at your fingertips.

## API

Docket Alarm offers a powerful API (application programming interface) to developers that want to integrate case filings into their apps.

## LAW FIRMS

Build custom dashboards for your attorneys and clients with live data direct from the court.

Automate many repetitive legal tasks like conflict checks, document management, and marketing.

## FINANCIAL INSTITUTIONS

Litigation and bankruptcy checks for companies and debtors.

## E-DISCOVERY AND LEGAL VENDORS

Sync your system to PACER to automate legal marketing.