

**CENTER FOR DRUG EVALUATION AND
RESEARCH**

APPLICATION NUMBER:

21-660

APPROVED LABELING

Version: Jan 7, 2005

Rx Only

ABRAXANE™ for Injectable Suspension (paclitaxel protein-bound particles for injectable suspension)
(albumin-bound)

(Patient Information Enclosed)

WARNING

ABRAXANE for Injectable Suspension (paclitaxel protein-bound particles for injectable suspension) should be administered under the supervision of a physician experienced in the use of cancer chemotherapeutic agents. Appropriate management of complications is possible only when adequate diagnostic and treatment facilities are readily available.

ABRAXANE therapy should not be administered to patients with metastatic breast cancer who have baseline neutrophil counts of less than 1,500 cells/mm³. In order to monitor the occurrence of bone marrow suppression, primarily neutropenia, which may be severe and result in infection, it is recommended that frequent peripheral blood cell counts be performed on all patients receiving ABRAXANE.

Note: An albumin form of paclitaxel may substantially affect a drug's functional properties relative to those of drug in solution. DO NOT SUBSTITUTE FOR OR WITH OTHER PACLITAXEL FORMULATIONS.

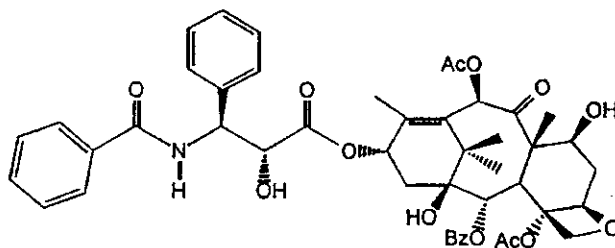
DESCRIPTION

ABRAXANE for Injectable Suspension (paclitaxel protein-bound particles for injectable suspension) is an albumin-bound form of paclitaxel with a mean particle size of approximately 130 nanometers. ABRAXANE is supplied as a white to yellow, sterile, lyophilized powder for reconstitution with 20 mL of 0.9% Sodium Chloride Injection, USP prior to intravenous infusion. Each single-use vial contains 100 mg of paclitaxel and approximately 900 mg of human albumin. Each milliliter (mL) of reconstituted suspension contains 5 mg paclitaxel. ABRAXANE is free of solvents.

The active agent in ABRAXANE is paclitaxel, a natural product with antitumor activity.

Paclitaxel is obtained from *Taxus media*. The chemical name for paclitaxel is 5 β ,20-Epoxy-1,2 α ,4,7 β ,10 β ,13 α -hexahydroxytax-11-en-9-one 4,10-diacetate 2-benzoate 13-ester with (2*R*,3*S*)-*N*-benzoyl-3-phenylisoserine.

Paclitaxel has the following structural formula:



Paclitaxel is a white to off-white crystalline powder with the empirical formula C₄₇H₅₁NO₁₄ and a molecular weight of 853.91. It is highly lipophilic, insoluble in water, and melts at approximately 216°C to 217°C.

CLINICAL PHARMACOLOGY

Mechanism of Action

ABRAXANE for Injectable Suspension (paclitaxel protein-bound particles for injectable suspension) is an antimicrotubule agent that promotes the assembly of microtubules from tubulin dimers and stabilizes microtubules by preventing depolymerization. This stability results in the inhibition of the normal dynamic reorganization of the microtubule network that is essential for vital interphase and mitotic cellular functions. Paclitaxel induces abnormal arrays or “bundles” of microtubules throughout the cell cycle and multiple asters of microtubules during mitosis.

Human Pharmacokinetics

The pharmacokinetics of total paclitaxel following 30- and 180-minute infusions of ABRAXANE at dose levels of 80-375 mg/m² were determined in clinical studies. Following intravenous administration of ABRAXANE, paclitaxel plasma concentrations declined in a biphasic manner, the initial rapid decline representing distribution to the peripheral compartment

and the slower second phase representing drug elimination. The terminal half-life was about 27 hours.

The drug exposure (AUCs) was dose proportional over 80 to 375 mg/m² and the pharmacokinetics of paclitaxel for ABRAXANE were independent of the duration of administration. At the recommended ABRAXANE clinical dose, 260 mg/m², the mean maximum concentration of paclitaxel, which occurred at the end of the infusion, was 18741 ng/mL. The mean total clearance was 15 L/hr/m². The mean volume of distribution was 632 L/m²; the large volume of distribution indicates extensive extravascular distribution and/or tissue binding of paclitaxel.

The pharmacokinetic data of 260 mg/m² ABRAXANE administered over 30 minutes was compared to the pharmacokinetics of 175 mg/m² paclitaxel injection over 3 hours. The clearance of ABRAXANE was larger (43%) than for the clearance of paclitaxel injection and the volume of distribution of ABRAXANE was also higher (53%). Differences in C_{max} and C_{max} corrected for dose reflected differences in total dose and rate of infusion. There were no differences in terminal half-lives.

In vitro studies of binding to human serum proteins, using paclitaxel concentrations ranging from 0.1 to 50 µg/mL, indicate that between 89%-98% of drug is bound; the presence of cimetidine, ranitidine, dexamethasone, or diphenhydramine did not affect protein binding of paclitaxel.

After a 30-minute infusion of 260 mg/m² doses of ABRAXANE, the mean values for cumulative urinary recovery of unchanged drug (4%) indicated extensive non-renal clearance. Less than 1% of the total administered dose was excreted in urine as the metabolites 6α-hydroxypaclitaxel and 3'-*p*-hydroxypaclitaxel. Fecal excretion was approximately 20% of the total dose administered.

In vitro studies with human liver microsomes and tissue slices showed that paclitaxel was metabolized primarily to 6α-hydroxypaclitaxel by CYP2C8; and to two minor metabolites, 3'-*p*-hydroxypaclitaxel and 6α, 3'-*p*-dihydroxypaclitaxel, by CYP3A4. *In vitro*, the metabolism of paclitaxel to 6α-hydroxypaclitaxel was inhibited by a number of agents (ketoconazole,

verapamil, diazepam, quinidine, dexamethasone, cyclosporin, teniposide, etoposide, and vincristine), but the concentrations used exceeded those found *in vivo* following normal therapeutic doses. Testosterone, 17 α -ethinyl estradiol, retinoic acid, and quercetin, a specific inhibitor of CYP2C8, also inhibited the formation of 6 α -hydroxypaclitaxel *in vitro*. The pharmacokinetics of paclitaxel may also be altered *in vivo* as a result of interactions with compounds that are substrates, inducers, or inhibitors of CYP2C8 and/or CYP3A4. (See **PRECAUTIONS: Drug Interactions**). The effect of renal or hepatic dysfunction on the disposition of ABRAXANE has not been investigated.

Possible interactions of paclitaxel with concomitantly administered medications have not been formally investigated.

CLINICAL STUDIES

Metastatic Breast Carcinoma:

Data from 106 patients accrued in two single arm open label studies and from 460 patients enrolled in a randomized comparative study were available to support the use of ABRAXANE in metastatic breast cancer.

Single Arm Open Label Studies- In one study, ABRAXANE was administered as a 30-minute infusion at a dose of 175 mg/m² to 43 patients with metastatic breast cancer. The second trial utilized a dose of 300 mg/m² as a 30 minute infusion in 63 patients with metastatic breast cancer. Cycles were administered at 3 week intervals. Objective responses were observed in both studies.

Randomized Comparative Study- This multicenter trial was conducted in 460 patients with metastatic breast cancer. Patients were randomized to receive ABRAXANE at a dose of 260 mg/m² given as a 30-minute infusion, or paclitaxel injection at 175 mg/m² given as a 3-hour infusion. Sixty-four percent of patients had impaired performance status (ECOG 1 or 2) at study entry; 79% had visceral metastases; and 76% had > 3 sites of metastases. Fourteen percent of the patients had not received prior chemotherapy; 27% had received chemotherapy in the adjuvant setting, 40% in the metastatic setting and 19% in both metastatic and adjuvant settings. Fifty-

Explore Litigation Insights

Docket Alarm provides insights to develop a more informed litigation strategy and the peace of mind of knowing you're on top of things.

Real-Time Litigation Alerts



Keep your litigation team up-to-date with **real-time alerts** and advanced team management tools built for the enterprise, all while greatly reducing PACER spend.

Our comprehensive service means we can handle Federal, State, and Administrative courts across the country.

Advanced Docket Research



With over 230 million records, Docket Alarm's cloud-native docket research platform finds what other services can't. Coverage includes Federal, State, plus PTAB, TTAB, ITC and NLRB decisions, all in one place.

Identify arguments that have been successful in the past with full text, pinpoint searching. Link to case law cited within any court document via Fastcase.

Analytics At Your Fingertips



Learn what happened the last time a particular judge, opposing counsel or company faced cases similar to yours.

Advanced out-of-the-box PTAB and TTAB analytics are always at your fingertips.

API

Docket Alarm offers a powerful API (application programming interface) to developers that want to integrate case filings into their apps.

LAW FIRMS

Build custom dashboards for your attorneys and clients with live data direct from the court.

Automate many repetitive legal tasks like conflict checks, document management, and marketing.

FINANCIAL INSTITUTIONS

Litigation and bankruptcy checks for companies and debtors.

E-DISCOVERY AND LEGAL VENDORS

Sync your system to PACER to automate legal marketing.