

HIGHLIGHTS OF PRESCRIBING INFORMATION

These highlights do not include all the information needed to use ALOXI safely and effectively. See full prescribing information for ALOXI

ALOXI® (palonosetron HCl) Injection for Intravenous Use
Initial U.S. Approval: 2003

RECENT MAJOR CHANGES

Warnings and Precautions, Hypersensitivity (5.1) 07/2013
Indication (1.2) 05/2014
Dosage and Administration, Pediatric Cancer Patients (2.1) 05/2014

INDICATIONS AND USAGE

ALOXI is a serotonin-3 (5-HT₃) receptor antagonist indicated in adults for:

- Moderately emetogenic cancer chemotherapy -- prevention of acute and delayed nausea and vomiting associated with initial and repeat courses (1.1)
- Highly emetogenic cancer chemotherapy -- prevention of acute nausea and vomiting associated with initial and repeat courses (1.1)
- Prevention of postoperative nausea and vomiting (PONV) for up to 24 hours following surgery. Efficacy beyond 24 hours has not been demonstrated (1.3)

ALOXI is indicated in pediatric patients aged 1 month to less than 17 years for:

- Prevention of acute nausea and vomiting associated with initial and repeat courses of emetogenic cancer chemotherapy, including highly emetogenic cancer chemotherapy (1.2)

DOSAGE AND ADMINISTRATION

Chemotherapy-Induced Nausea and Vomiting (2.1)

Age	Dose*	Infusion Time
Adults	0.25 mg x 1	Infuse over 30 seconds beginning approx. 30 min before the start of chemo
Pediatrics (1 month to less than 17 years)	20 micrograms per kilogram (max 1.5 mg) x 1	Infuse over 15 minutes beginning approx. 30 min before the start of chemo

*Note different dosing units in pediatrics

Postoperative Nausea and Vomiting (2.1)

- Adult Dosage: a single 0.075 mg intravenous dose administered over 10 seconds immediately before the induction of anesthesia.

DOSAGE FORMS AND STRENGTHS

0.25 mg/5mL (free base) single-use vial (3)
0.075 mg/1.5mL (free base) single-use vial (3)

CONTRAINDICATIONS

ALOXI is contraindicated in patients known to have hypersensitivity to the drug or any of its components (4)

WARNINGS AND PRECAUTIONS

- Hypersensitivity reactions, including anaphylaxis, have been reported with or without known hypersensitivity to other selective 5-HT₃ receptor antagonists (5.1)

ADVERSE REACTIONS

The most common adverse reactions in chemotherapy-induced nausea and vomiting in adults (incidence ≥5%) are headache and constipation (6.1).

The most common adverse reactions in postoperative nausea and vomiting (incidence ≥ 2%) are QT prolongation, bradycardia, headache, and constipation (6.2).

To report SUSPECTED ADVERSE REACTIONS, contact EISAI at 1-888-422-4743 or FDA at 1-800-FDA-1088 or www.fda.gov/medwatch.

DRUG INTERACTIONS

The potential for clinically significant drug interactions with palonosetron appears to be low (7)

USE IN SPECIFIC POPULATIONS

Chemotherapy-Induced Nausea and Vomiting

Pediatric use: Safety and effectiveness in neonates (less than 1 month of age) have not been established (8.4)

Postoperative Nausea and Vomiting

Safety and Effectiveness in patients below the age of 18 years have not been established (8.4)

See 17 for PATIENT COUNSELING INFORMATION and FDA-approved Patient Labeling

Revised: 05/2014

FULL PRESCRIBING INFORMATION: CONTENTS*

1 INDICATIONS AND USAGE

- 1.1 Chemotherapy-Induced Nausea and Vomiting in Adults
- 1.2 Chemotherapy-Induced Nausea and Vomiting in Pediatric Patients Aged 1 month to Less than 17 Years
- 1.3 Postoperative Nausea and Vomiting in Adults

2 DOSAGE AND ADMINISTRATION

- 2.1 Recommended Dosing
- 2.2 Instructions for Intravenous Administration

3 DOSAGE FORM AND STRENGTHS

4 CONTRAINDICATIONS

5 WARNINGS AND PRECAUTIONS

- 5.1 Hypersensitivity

6 ADVERSE REACTIONS

- 6.1 Chemotherapy-Induced Nausea and Vomiting
- 6.2 Postoperative Nausea and Vomiting
- 6.3 Postmarketing Experience

7 DRUG INTERACTIONS

8 USE IN SPECIFIC POPULATIONS

- 8.1 Pregnancy
- 8.3 Nursing Mothers
- 8.4 Pediatric Use
- 8.5 Geriatric Use
- 8.6 Renal Impairment
- 8.7 Hepatic Impairment
- 8.8 Race

10 OVERDOSAGE

11 DESCRIPTION

12 CLINICAL PHARMACOLOGY

- 12.1 Mechanism of Action
- 12.2 Pharmacodynamics
- 12.3 Pharmacokinetics

13 NONCLINICAL TOXICOLOGY

- 13.1 Carcinogenesis, Mutagenesis, Impairment of Fertility

14 CLINICAL STUDIES

- 14.1 Chemotherapy-Induced Nausea and Vomiting in Adults
- 14.2 Chemotherapy-Induced Nausea and Vomiting in Pediatrics
- 14.3 Postoperative Nausea and Vomiting

16 HOW SUPPLIED/STORAGE AND HANDLING

17 PATIENT COUNSELING INFORMATION

* Sections or subsections omitted from the full prescribing information are not listed.

FULL PRESCRIBING INFORMATION

1 INDICATIONS AND USAGE

1.1 Chemotherapy-Induced Nausea and Vomiting in Adults

ALOXI is indicated for:

- Moderately emetogenic cancer chemotherapy -- prevention of acute and delayed nausea and vomiting associated with initial and repeat courses
- Highly emetogenic cancer chemotherapy -- prevention of acute nausea and vomiting associated with initial and repeat courses

1.2 Chemotherapy-Induced Nausea and Vomiting in Pediatric Patients Aged 1 month to Less than 17 Years

ALOXI is indicated for prevention of acute nausea and vomiting associated with initial and repeat courses of emetogenic cancer chemotherapy, including highly emetogenic cancer chemotherapy.

1.3 Postoperative Nausea and Vomiting in Adults

ALOXI is indicated for prevention of postoperative nausea and vomiting (PONV) for up to 24 hours following surgery. Efficacy beyond 24 hours has not been demonstrated.

As with other antiemetics, routine prophylaxis is not recommended in patients in whom there is little expectation that nausea and/or vomiting will occur postoperatively. In patients where nausea and vomiting must be avoided during the postoperative period, ALOXI is recommended even where the incidence of postoperative nausea and/or vomiting is low.

2 DOSAGE AND ADMINISTRATION

2.1 Recommended Dosing

Chemotherapy-Induced Nausea and Vomiting

Age	Dose*	Infusion Time
Adults	0.25 mg x 1	Infuse over 30 seconds beginning approx. 30 min before the start of chemo
Pediatrics (1 month to less than 17 years)	20 micrograms per kilogram (max 1.5 mg) x 1	Infuse over 15 minutes beginning approx. 30 min before the start of chemo

*Note different dosing units in pediatrics

Postoperative Nausea and Vomiting

Dosage for Adults - a single 0.075 mg intravenous dose administered over 10 seconds immediately before the induction of anesthesia.

2.2 Instructions for Intravenous Administration

ALOXI is supplied ready for intravenous administration at a concentration of 0.05 mg/mL (50 mcg/mL). ALOXI should not be mixed with other drugs. The infusion line should be flushed with normal saline before and after administration of ALOXI. Parenteral drug products should be inspected visually for particulate matter and discoloration before administration, whenever solution and container permit.

3 DOSAGE FORM AND STRENGTHS

ALOXI is supplied as a single-use sterile, clear, colorless solution in glass vials that provide:

- 0.25 mg (free base) per 5 mL (concentration: 0.05 mg/mL, 50 mcg/mL)
- 0.075 mg (free base) per 1.5 mL (concentration: 0.05 mg/mL, 50 mcg/mL)

4 CONTRAINDICATIONS

ALOXI is contraindicated in patients known to have hypersensitivity to the drug or any of its components. [see Adverse Reactions (6.2)]

5 WARNINGS AND PRECAUTIONS

5.1 Hypersensitivity

Hypersensitivity reactions, including anaphylaxis, have been reported with or without known hypersensitivity to other 5-HT₃ receptor

6 ADVERSE REACTIONS

Because clinical trials are conducted under widely varying conditions, adverse reaction rates observed in the clinical trials of a drug cannot be directly compared to rates in the clinical trials of another drug and may not reflect the rates observed in practice.

6.1 Chemotherapy-Induced Nausea and Vomiting

Adults

In clinical trials for the prevention of nausea and vomiting induced by moderately or highly emetogenic chemotherapy, 1374 adult patients received palonosetron. Adverse reactions were similar in frequency and severity with ALOXI and ondansetron or dolasetron. Following is a listing of all adverse reactions reported by ≥ 2% of patients in these trials (Table 1).

Table 1: Adverse Reactions from Chemotherapy-Induced Nausea and Vomiting Studies ≥ 2% in any Treatment Group

Event	Aloxi 0.25 mg (N=633)	Ondansetron 32 mg I.V. (N=410)	Dolasetron 100 mg I.V. (N=194)
Headache	60 (9%)	34 (8%)	32 (16%)
Constipation	29 (5%)	8 (2%)	12 (6%)
Diarrhea	8 (1%)	7 (2%)	4 (2%)
Dizziness	8 (1%)	9 (2%)	4 (2%)
Fatigue	3 (< 1%)	4 (1%)	4 (2%)
Abdominal Pain	1 (< 1%)	2 (< 1%)	3 (2%)
Insomnia	1 (< 1%)	3 (1%)	3 (2%)

In other studies, 2 subjects experienced severe constipation following a single palonosetron dose of approximately 0.75 mg, three times the recommended dose. One patient received a 10 mcg/kg oral dose in a post-operative nausea and vomiting study and one healthy subject received a 0.75 mg I.V. dose in a pharmacokinetic study.

In clinical trials, the following infrequently reported adverse reactions, assessed by investigators as treatment-related or causality unknown, occurred following administration of ALOXI to adult patients receiving concomitant cancer chemotherapy:

Cardiovascular: 1%: non-sustained tachycardia, bradycardia, hypotension, < 1%: hypertension, myocardial ischemia, extrasystoles, sinus tachycardia, sinus arrhythmia, supraventricular extrasystoles and QT prolongation. In many cases, the relationship to ALOXI was unclear.

Dermatological: < 1%: allergic dermatitis, rash.

Hearing and Vision: < 1%: motion sickness, tinnitus, eye irritation and amblyopia.

Gastrointestinal System: 1%: diarrhea, < 1%: dyspepsia, abdominal pain, dry mouth, hiccups and flatulence.

General: 1%: weakness, < 1%: fatigue, fever, hot flash, flu-like syndrome.

Liver: < 1%: transient, asymptomatic increases in AST and/or ALT and bilirubin. These changes occurred predominantly in patients receiving highly emetogenic chemotherapy.

Metabolic: 1%: hyperkalemia, < 1%: electrolyte fluctuations, hyperglycemia, metabolic acidosis, glycosuria, appetite decrease, anorexia.

Musculoskeletal: < 1%: arthralgia.

Nervous System: 1%: dizziness, < 1%: somnolence, insomnia, hypersomnia, paresthesia.

Psychiatric: 1%: anxiety, < 1%: euphoric mood.

Vascular: < 1%: vein discoloration, vein distention.

Pediatrics

In a pediatric clinical trial for the prevention of chemotherapy-induced nausea and vomiting 163 cancer patients received a single 20 mcg/kg (maximum 1.5 mg) intravenous infusion of palonosetron 30 minutes before beginning the first cycle of emetogenic chemotherapy. Patients had a mean age of 8.4 years (range 2 months to 16.9 years) and were 46% male; and 93% white.

The following adverse reactions were reported for palonosetron:

Nervous System: <1%: headache, dizziness, dyskinesia.

General: <1%: infusion site pain.

Dermatological: <1%: allergic dermatitis, skin disorder.

In the trial, adverse reactions were evaluated in pediatric patients receiving palonosetron for up to 4 chemotherapy cycles.

6.2 Postoperative Nausea and Vomiting

The adverse reactions cited in Table 2 were reported in $\geq 2\%$ of adults receiving I.V. Aloxi 0.075 mg immediately before induction of anesthesia in one phase 2 and two phase 3 randomized placebo-controlled trials. Rates of events between palonosetron and placebo groups were similar. Some events are known to be associated with, or may be exacerbated by concomitant perioperative and intraoperative medications administered in this surgical population. Please refer to Section 12.2, thorough QT/QTc study results, for data demonstrating the lack of palonosetron effect on QT/QTc.

Table 2: Adverse Reactions from Postoperative Nausea and Vomiting Studies $\geq 2\%$ in any Treatment Group

Event	Aloxi 0.075 mg (N=336)	Placebo (N=369)
Electrocardiogram QT prolongation	16 (5%)	11 (3%)
Bradycardia	13 (4%)	16 (4%)
Headache	11 (3%)	14 (4%)
Constipation	8 (2%)	11(3%)

In these clinical trials, the following infrequently reported adverse reactions, assessed by investigators as treatment-related or causality unknown, occurred following administration of ALOXI to adult patients receiving concomitant perioperative and intraoperative medications including those associated with anesthesia:

Cardiovascular: 1%: electrocardiogram QTc prolongation, sinus bradycardia, tachycardia, < 1%: blood pressure decreased, hypotension, hypertension, arrhythmia, ventricular extrasystoles, generalized edema, ECG T wave amplitude decreased, platelet count decreased. The frequency of these adverse effects did not appear to be different from placebo.

Dermatological: 1%: pruritus.

Gastrointestinal System: 1%: flatulence, < 1%: dry mouth, upper abdominal pain, salivary hypersecretion, dyspepsia, diarrhea, intestinal hypomotility, anorexia.

General: < 1%: chills.

Liver: 1%: increases in AST and/or ALT, < 1%: hepatic enzyme increased.

Metabolic: < 1%: hypokalemia, anorexia.

Nervous System: < 1%: dizziness.

Urinary System: 1%: urinary retention.

6.3 Postmarketing Experience

The following adverse reactions have been identified during postapproval use of ALOXI. Because these reactions are reported voluntarily from a population of uncertain size, it is not always possible to reliably estimate their frequency or establish a causal relationship to drug exposure.

Very rare cases (<1/10,000) of hypersensitivity reactions including anaphylaxis and anaphylactic shock and injection site reactions (burning, induration, discomfort and pain) were reported from postmarketing experience of ALOXI 0.25 mg in the prevention of chemotherapy-induced nausea and vomiting.

7 DRUG INTERACTIONS

Palonosetron is eliminated from the body through both renal excretion and metabolic pathways with the latter mediated via multiple CYP enzymes. Further *in vitro* studies indicated that palonosetron is not an inhibitor of CYP1A2, CYP2A6, CYP2B6, CYP2C9, CYP2D6, CYP2E1 and CYP3A4/5 (CYP2C19 was not investigated) nor does it induce the activity of CYP1A2, CYP2D6, or CYP3A4/5. Therefore, the potential for clinically significant drug interactions with palonosetron appears to be low.

Coadministration of 0.25 mg I.V. palonosetron and 20 mg I.V. dexamethasone in healthy subjects revealed no pharmacokinetic drug-interactions between palonosetron and dexamethasone.

In an interaction study in healthy subjects where palonosetron 0.25 mg (I.V. bolus) was administered on day 1 and oral aprepitant for 3 days (125 mg/80 mg/80 mg), the pharmacokinetics of palonosetron were not significantly altered (AUC: no change, Cmax: 15% increase).

A study in healthy volunteers involving single-dose I.V. palonosetron (0.75 mg) and steady state oral metoclopramide (10 mg four times daily) demonstrated no significant pharmacokinetic interaction.

In controlled clinical trials, ALOXI injection has been safely administered with corticosteroids, analgesics, antiemetics/antinauseants, antispasmodics and anticholinergic agents.

Palonosetron did not inhibit the antitumor activity of the five chemotherapeutic agents tested (cisplatin, cyclophosphamide, cytarabine, doxorubicin and mitomycin C) in murine tumor models.

8 USE IN SPECIFIC POPULATIONS

8.1 Pregnancy

Pregnancy Category B

Risk Summary

Adequate and well controlled studies with ALOXI have not been conducted in pregnant women. In animal reproduction studies, no effects on embryo-fetal development were observed with the administration of oral palonosetron during the period of organogenesis at doses up to 1894 and 3789 times the recommended human intravenous dose in rats and rabbits, respectively. Because animal reproduction studies are not always predictive of human response, ALOXI should be used during pregnancy only if clearly needed.

Animal Data

In animal studies, no effects on embryo-fetal development were observed in pregnant rats given oral palonosetron at doses up to 60 mg/kg/day (1894 times the recommended human intravenous dose based on body surface area) or pregnant rabbits given oral doses up to 60 mg/kg/day (3789 times the recommended human intravenous dose based on body surface area) during the period of organogenesis.

8.3 Nursing Mothers

It is not known whether ALOXI is present in human milk. Because many drugs are excreted in human milk and because of the potential for serious adverse reactions in nursing infants and the potential for tumorigenicity shown for palonosetron in the rat carcinogenicity study [see *Nonclinical Toxicology (13.1)*], a decision should be made whether to discontinue nursing or to discontinue the drug, taking into account the

8.4 Pediatric Use

Chemotherapy-Induced Nausea and Vomiting

Safety and effectiveness of ALOXI have been established in pediatric patients aged 1 month to less than 17 years for the prevention of acute nausea and vomiting associated with initial and repeat courses of emetogenic cancer chemotherapy, including highly emetogenic cancer chemotherapy. Use is supported by a clinical trial where 165 pediatric patients aged 2 months to <17 years were randomized to receive a single dose of palonosetron 20 mcg/kg (maximum 1.5 mg) administered as an intravenous infusion 30 minutes prior to the start of emetogenic chemotherapy [see *Clinical Studies (14.2)*]. While this study demonstrated that pediatric patients require a higher palonosetron dose than adults to prevent chemotherapy-induced nausea and vomiting, the safety profile is consistent with the established profile in adults [see *Adverse Reactions (6.1)*].

Safety and effectiveness of ALOXI in neonates (less than 1 month of age) have not been established.

Postoperative Nausea and Vomiting Studies

Safety and efficacy have not been established in pediatric patients for prevention of postoperative nausea and vomiting. Two pediatric trials were performed.

Pediatric Study 1, a dose finding study was conducted to compare two doses of palonosetron, 1 mcg/kg (max 0.075 mg) versus 3 mcg/kg (max 0.25 mg). A total of 150 pediatric surgical patients participated, age range 1 month to <17 years. No dose response was observed.

Pediatric Study 2, a multicenter, double-blind, double-dummy, randomized, parallel group, active control, single-dose non-inferiority study, compared I.V. palonosetron (1 mcg/kg, max 0.075 mg) versus I.V. ondansetron. A total of 670 pediatric surgical patients participated, age 30 days to <17 years. The primary efficacy endpoint, Complete Response (CR: no vomiting, no retching, and no antiemetic rescue medication) during the first 24 hours postoperatively was achieved in 78.2% of patients in the palonosetron group and 82.7% in the ondansetron group. Given the pre-specified non-inferiority margin of -10%, the stratum adjusted Mantel-Haenszel statistical non-inferiority confidence interval for the difference in the primary endpoint, complete response (CR), was [-10.5, 1.7%], therefore non-inferiority was not demonstrated. Adverse reactions to palonosetron were similar to those reported in adults (see Table 2).

8.5 Geriatric Use

Population pharmacokinetics analysis did not reveal any differences in palonosetron pharmacokinetics between cancer patients ≥ 65 years of age and younger patients (18 to 64 years). Of the 1374 adult cancer patients in clinical studies of palonosetron, 316 (23%) were ≥ 65 years old, while 71 (5%) were ≥ 75 years old. No overall differences in safety or effectiveness were observed between these subjects and the younger subjects, but greater sensitivity in some older individuals cannot be ruled out. No dose adjustment or special monitoring are required for geriatric patients.

Of the 1520 adult patients in Aloxi PONV clinical studies, 73 (5%) were ≥ 65 years old. No overall differences in safety were observed between older and younger subjects in these studies, though the possibility of heightened sensitivity in some older individuals cannot be excluded. No differences in efficacy were observed in geriatric patients for the CINV indication and none are expected for geriatric PONV patients. However, Aloxi efficacy in geriatric patients has not been adequately evaluated.

8.6 Renal Impairment

Mild to moderate renal impairment does not significantly affect palonosetron pharmacokinetic parameters. Total systemic exposure increased by approximately 28% in severe renal impairment relative to healthy subjects. Dosage adjustment is not necessary in patients with any degree of renal impairment.

8.7 Hepatic Impairment

Hepatic impairment does not significantly affect total body clearance of palonosetron compared to the healthy subjects. Dosage adjustment is not necessary in patients with any degree of hepatic impairment.

8.8 Race

Intravenous palonosetron pharmacokinetics was characterized in twenty-four healthy Japanese subjects over the dose range of 3 – 90 mcg/kg. Total body clearance was 25% higher in Japanese subjects compared to Whites, however, no dose adjustment is required. The pharmacokinetics of palonosetron in Blacks has not been adequately characterized.

10 OVERDOSAGE

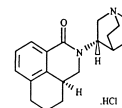
There is no known antidote to ALOXI. Overdose should be managed with supportive care.

Fifty adult cancer patients were administered palonosetron at a dose of 90 mcg/kg (equivalent to 6 mg fixed dose) as part of a dose ranging study. This is approximately 25 times the recommended dose of 0.25 mg. This dose group had a similar incidence of adverse events compared to the other dose groups and no dose response effects were observed.

Dialysis studies have not been performed, however, due to the large volume of distribution, dialysis is unlikely to be an effective treatment for palonosetron overdose. A single intravenous dose of palonosetron at 30 mg/kg (947 and 474 times the human dose for rats and mice, respectively, based on body surface area) was lethal to rats and mice. The major signs of toxicity were convulsions, gasping, pallor, cyanosis and collapse.

11 DESCRIPTION

ALOXI (palonosetron hydrochloride) is an antiemetic and antinauseant agent. It is a serotonin-3 (5-HT₃) receptor antagonist with a strong binding affinity for this receptor. Chemically, palonosetron hydrochloride is: (3aS)-2-[(S)-1-Azabicyclo [2.2.2]oct-3-yl]-2,3,3a,4,5,6-hexahydro-1-oxo-1H-benz[de]isoquinoline hydrochloride. The empirical formula is C₁₉H₂₄N₂O.HCl, with a molecular weight of 332.87. Palonosetron hydrochloride exists as a single isomer and has the following structural formula:



Palonosetron hydrochloride is a white to off-white crystalline powder. It is freely soluble in water, soluble in propylene glycol, and slightly soluble in ethanol and 2-propanol.

ALOXI injection is a sterile, clear, colorless, non pyrogenic, isotonic, buffered solution for intravenous administration. ALOXI injection is available as 5 mL single use vial or 1.5 mL single use vial. Each 5 mL vial contains 0.25 mg palonosetron base as 0.28 mg palonosetron hydrochloride, 207.5 mg mannitol, disodium edetate and citrate buffer in water for intravenous administration.

Each 1.5 mL vial contains 0.075 mg palonosetron base as 0.084 mg palonosetron hydrochloride, 83 mg mannitol, disodium edetate and citrate buffer in water for intravenous administration.

The pH of the solution in the 5 mL and 1.5 mL vials is 4.5 to 5.5.

12 CLINICAL PHARMACOLOGY

12.1 Mechanism of Action

Palonosetron is a 5-HT₃ receptor antagonist with a strong binding affinity for this receptor and little or no affinity for other receptors.

Cancer chemotherapy may be associated with a high incidence of nausea and vomiting, particularly when certain agents, such as cisplatin, are used. 5-HT₃ receptors are located on the nerve terminals of the vagus in the periphery and centrally in the chemoreceptor trigger zone of the area postrema. It is thought that chemotherapeutic agents produce nausea and vomiting by releasing serotonin from the enterochromaffin cells of the small intestine and that the released serotonin then activates 5-HT₃ receptors located on vagal afferents to initiate the vomiting reflex.

Postoperative nausea and vomiting is influenced by multiple patient, surgical and anesthesia related factors and is triggered by release of 5-HT in a cascade of neuronal events involving both the central nervous system and the gastrointestinal tract. The 5-HT₃ receptor has been demonstrated to selectively participate in the emetic response.

12.2 Pharmacodynamics

The effect of palonosetron on blood pressure, heart rate, and ECG parameters including QTc were comparable to ondansetron and dolasetron in CINV clinical trials. In PONV clinical trials the effect of palonosetron on the QTc interval was no different from placebo. In non-clinical studies palonosetron possesses the ability to block ion channels involved in ventricular de- and re-polarization and to prolong action potential duration.

The effect of palonosetron on QTc interval was evaluated in a double blind, randomized, parallel, placebo and positive (moxifloxacin) controlled trial in adult men and women. The objective was to evaluate the ECG effects of I.V. administered palonosetron at single doses of 0.25, 0.75 or 2.25 mg in 221 healthy subjects. The study demonstrated no significant effect on any ECG interval including QTc duration (cardiac repolarization) at doses up to 2.25 mg.

12.3 Pharmacokinetics

After intravenous dosing of palonosetron in healthy subjects and cancer patients, an initial decline in plasma concentrations is followed by a slow elimination from the body. Mean maximum plasma concentration (C_{max}) and area under the concentration-time curve ($AUC_{0-\infty}$) are generally dose-proportional over the dose range of 0.3–90 mcg/kg in healthy subjects and in cancer patients. Following single I.V. dose of palonosetron at 3 mcg/kg (or 0.21 mg/70 kg) to six cancer patients, mean (\pm SD) maximum plasma concentration was estimated to be 5630 ± 5480 ng/L and mean AUC was 35.8 ± 20.9 h•mcg/L.

Following I.V. administration of palonosetron 0.25 mg once every other day for 3 doses in 11 cancer patients, the mean increase in plasma palonosetron concentration from Day 1 to Day 5 was $42 \pm 34\%$. Following I.V. administration of palonosetron 0.25 mg once daily for 3 days in 12 healthy subjects, the mean (\pm SD) increase in plasma palonosetron concentration from Day 1 to Day 3 was $110 \pm 45\%$.

After intravenous dosing of palonosetron in patients undergoing surgery (abdominal surgery or vaginal hysterectomy), the pharmacokinetic characteristics of palonosetron were similar to those observed in cancer patients.

Distribution

Palonosetron has a volume of distribution of approximately 8.3 ± 2.5 L/kg. Approximately 62% of palonosetron is bound to plasma proteins.

Metabolism

Palonosetron is eliminated by multiple routes with approximately 50% metabolized to form two primary metabolites: N-oxide-palonosetron and 6-S-hydroxy-palonosetron. These metabolites each have less than 1% of the 5-HT₃ receptor antagonist activity of palonosetron. *In vitro* metabolism studies have suggested that CYP2D6 and to a lesser extent, CYP3A4 and CYP1A2 are involved in the metabolism of palonosetron. However, clinical pharmacokinetic parameters are not significantly different between poor and extensive metabolizers of CYP2D6 substrates.

Elimination

After a single intravenous dose of 10 mcg/kg [¹⁴C]-palonosetron, approximately 80% of the dose was recovered within 144 hours in the urine with palonosetron representing approximately 40% of the administered dose. In healthy subjects, the total body clearance of palonosetron was 0.160 ± 0.035 L/h/kg and renal clearance was 0.067 ± 0.018 L/h/kg. Mean terminal elimination half-life is approximately 40 hours.

Specific populations

Pediatric Patients

Single-dose I.V. ALOXI pharmacokinetic data was obtained from a subset of pediatric cancer patients that received 10 mcg/kg or 20 mcg/kg. When the dose was increased from 10 mcg/kg to 20 mcg/kg a dose-proportional increase in mean AUC was observed. Following single dose intravenous infusion of Aloxi 20 mcg/kg, peak plasma concentrations (C_T) reported at the end of the 15 minute infusion were highly variable in all age groups and tended to be lower in patients < 6 years than in older patients. Median half-life was 29.5 hours in overall age groups and ranged from about 20 to 30 hours across age groups after administration of 20 mcg/kg.

The total body clearance (L/h/kg) in patients 12 to 17 years old was similar to that in healthy adults. There are no apparent differences in volume of distribution when expressed as L/kg.

Table 3: Pharmacokinetics Parameters in Pediatric Cancer Patients following intravenous infusion of ALOXI at 20 mcg/kg over 15 min

PK Parameter ^a	Pediatric Age Group			
	<2 y	2 to <6 y	6 to <12 y	12 to <17 y
	N=12	N=42	N=38	N=44
C_T^b , ng/L	9025 (197)	9414 (252)	16275 (203)	11831 (176)
		N=5	N=7	N=10
$AUC_{0-\infty}$, h•mcg/L		103.5 (40.4)	98.7 (47.7)	124.5 (19.1)
	N=6	N=14	N=13	N=19
Clearance ^c , L/h/kg	0.31 (34.7)	0.23 (51.3)	0.19 (46.8)	0.16 (27.8)
V_{ss}^c , L/kg	6.08 (36.5)	5.29 (57.8)	6.26 (40.0)	6.20 (29.0)

a Geometric Mean (CV) except for t_{1/2} which is median values.

b C_T is the plasma palonosetron concentration at the end of the 15 minute infusion.

c Clearance and V_{ss} calculated from 10 and 20 mcg/kg and are weight adjusted

13 NONCLINICAL TOXICOLOGY

13.1 Carcinogenesis, Mutagenesis, Impairment of Fertility

In a 104-week carcinogenicity study in CD-1 mice, animals were treated with oral doses of palonosetron at 10, 30 and 60 mg/kg/day. Treatment with palonosetron was not tumorigenic. The highest tested dose produced a systemic exposure to palonosetron (Plasma AUC) of about 150 to 289 times the human exposure ($AUC = 29.8$ h•mcg/L) at the recommended intravenous dose of 0.25 mg. In a 104-week carcinogenicity study in Sprague-Dawley rats, male and female rats were treated with oral doses of 15, 30 and 60 mg/kg/day and 15, 45 and 90 mg/kg/day, respectively. The highest doses produced a systemic exposure to palonosetron (Plasma AUC) of 137 and 308 times the human exposure at the recommended dose. Treatment with palonosetron produced increased incidences of adrenal benign pheochromocytoma and combined benign and malignant pheochromocytoma, increased incidences of pancreatic Islet cell adenoma and combined adenoma and carcinoma and pituitary adenoma in male rats. In female rats, it produced hepatocellular adenoma and carcinoma and increased the incidences of thyroid C-cell adenoma and combined adenoma and carcinoma.

Palonosetron was not genotoxic in the Ames test, the Chinese hamster ovarian cell (CHO/HGPRT) forward mutation test, the *ex vivo* hepatocyte unscheduled DNA synthesis (UDS) test or the mouse micronucleus test. It was, however, positive for clastogenic effects in the Chinese hamster ovarian (CHO) cell chromosomal aberration test.

Palonosetron at oral doses up to 60 mg/kg/day (about 1894 times the recommended human intravenous dose based on body surface area) was found to have no effect on fertility and reproductive performance of male and female rats.

14 CLINICAL STUDIES

14.1 Chemotherapy-Induced Nausea and Vomiting in Adults

Efficacy of single-dose palonosetron injection in preventing acute and delayed nausea and vomiting induced by both moderately and highly emetogenic chemotherapy was studied in three Phase 3 trials and one Phase 2 trial. In these double-blind studies, complete response rates (no emetic episodes and no rescue medication) and other efficacy parameters were assessed through at least 120 hours after administration of chemotherapy. The safety and efficacy of palonosetron in repeated courses of chemotherapy was also assessed.

Moderately Emetogenic Chemotherapy

Two Phase 3, double-blind trials involving 1132 patients compared single-dose I.V. ALOXI with either single-dose I.V. ondansetron (study 1) or dolasetron (study 2) given 30 minutes prior to moderately emetogenic chemotherapy including carboplatin, cisplatin ≤ 50 mg/m², cyclophosphamide < 1500 mg/m², doxorubicin > 25 mg/m², epirubicin, irinotecan, and methotrexate > 250 mg/m². Concomitant corticosteroids were not administered prophylactically in study 1 and were only used by 4-6% of patients in study 2. The majority of patients in these studies were women (77%), White (65%) and naïve to previous chemotherapy (54%). The mean age was 55 years.

Explore Litigation Insights

Docket Alarm provides insights to develop a more informed litigation strategy and the peace of mind of knowing you're on top of things.

Real-Time Litigation Alerts



Keep your litigation team up-to-date with **real-time alerts** and advanced team management tools built for the enterprise, all while greatly reducing PACER spend.

Our comprehensive service means we can handle Federal, State, and Administrative courts across the country.

Advanced Docket Research



With over 230 million records, Docket Alarm's cloud-native docket research platform finds what other services can't. Coverage includes Federal, State, plus PTAB, TTAB, ITC and NLRB decisions, all in one place.

Identify arguments that have been successful in the past with full text, pinpoint searching. Link to case law cited within any court document via Fastcase.

Analytics At Your Fingertips



Learn what happened the last time a particular judge, opposing counsel or company faced cases similar to yours.

Advanced out-of-the-box PTAB and TTAB analytics are always at your fingertips.

API

Docket Alarm offers a powerful API (application programming interface) to developers that want to integrate case filings into their apps.

LAW FIRMS

Build custom dashboards for your attorneys and clients with live data direct from the court.

Automate many repetitive legal tasks like conflict checks, document management, and marketing.

FINANCIAL INSTITUTIONS

Litigation and bankruptcy checks for companies and debtors.

E-DISCOVERY AND LEGAL VENDORS

Sync your system to PACER to automate legal marketing.