

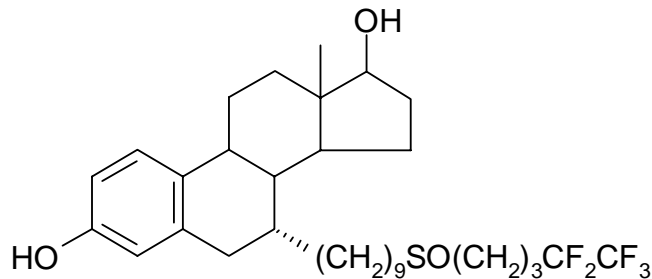
Rev 08-04



*fulvestrant*  
**INJECTION**

**DESCRIPTION**

FASLODEX<sup>®</sup> (fulvestrant) Injection for intramuscular administration is an estrogen receptor antagonist without known agonist effects. The chemical name is 7- $\alpha$ -[9-(4,4,5,5,5-pentafluoropentylsulphinyl) nonyl]estra-1,3,5-(10)-triene-3,17- $\beta$ -diol. The molecular formula is C<sub>32</sub>H<sub>47</sub>F<sub>5</sub>O<sub>3</sub>S and its structural formula is:



Fulvestrant is a white powder with a molecular weight of 606.77. The solution for injection is a clear, colorless to yellow, viscous liquid.

Each injection contains as inactive ingredients: Alcohol, USP, Benzyl Alcohol, NF, and Benzyl Benzoate, USP, as co-solvents, and Castor Oil, USP as a co-solvent and release rate modifier.

FASLODEX is supplied in sterile single patient pre-filled syringes containing 50-mg/mL fulvestrant either as a single 5 mL or two concurrent 2.5 mL injections to deliver the required monthly dose. FASLODEX is administered as an intramuscular injection of 250 mg once monthly.

**CLINICAL PHARMACOLOGY****Mechanism of Action**

Many breast cancers have estrogen receptors (ER), and the growth of these tumors can be stimulated by estrogen. Fulvestrant is an estrogen receptor antagonist that binds to the estrogen receptor in a competitive manner with affinity comparable to that of estradiol. Fulvestrant downregulates the ER protein in human breast cancer cells.

In a clinical study in postmenopausal women with primary breast cancer treated with single doses of FASLODEX 15-22 days prior to surgery, there was evidence of increasing down regulation of ER with increasing dose. This was associated with a dose-related decrease in the expression of the progesterone receptor, an estrogen-regulated protein. These effects on the ER pathway were also associated with a decrease in Ki67 labeling index, a marker of cell proliferation.

*In vitro* studies demonstrated that fulvestrant is a reversible inhibitor of the growth of tamoxifen-resistant, as well as estrogen-sensitive human breast cancer (MCF-7) cell lines. In *in vivo* tumor studies, fulvestrant delayed the establishment of tumors from xenografts of human breast cancer MCF-7 cells in nude mice. Fulvestrant inhibited the growth of established MCF-7 xenografts and of tamoxifen-resistant breast tumor xenografts. Fulvestrant resistant breast tumor xenografts may also be cross-resistant to tamoxifen.

Fulvestrant showed no agonist-type effects in *in vivo* uterotrophic assays in immature or ovariectomized mice and rats. In *in vivo* studies in immature rats and ovariectomized monkeys, fulvestrant blocked the uterotrophic action of estradiol. In postmenopausal women, the absence of changes in plasma concentrations of FSH and LH in response to fulvestrant treatment (250 mg monthly) suggests no peripheral steroidal effects.

### Pharmacokinetics

Following intravenous administration, fulvestrant is rapidly cleared at a rate approximating hepatic blood flow (about 10.5 mL plasma/min/Kg). After an intramuscular injection plasma concentrations are maximal at about 7 days and are maintained over a period of at least one month, with trough concentration about one-third of  $C_{max}$ . The apparent half-life was about 40 days. After administration of 250 mg of fulvestrant intramuscularly every month, plasma levels approach steady-state after 3 to 6 doses, with an average 2.5 fold increase in plasma AUC compared to single dose AUC and trough levels about equal to the single dose  $C_{max}$  (see **Table 1**).

**Table 1: Summary of fulvestrant pharmacokinetic parameters in postmenopausal advanced breast cancer patients after intramuscular administration of a 250 mg dose (Mean  $\pm$ SD)**

	$C_{max}$ ng/mL	$C_{min}$ ng/mL	AUC ng.d/mL	$t_{1/2}$ days	CL mL/min
Single dose	8.5 $\pm$ 5.4	2.6 $\pm$ 1.1	131 $\pm$ 62	40 $\pm$ 11	690 $\pm$ 226
Multiple dose steady state	15.8 $\pm$ 2.4	7.4 $\pm$ 1.7	328 $\pm$ 48		

Fulvestrant was subject to extensive and rapid distribution. The apparent volume of distribution at steady state was approximately 3 to 5 L/kg. This suggests that distribution is largely extravascular. Fulvestrant was highly (99%) bound to plasma proteins; VLDL, LDL and HDL lipoprotein fractions appear to be the major binding components. The role of sex hormone-binding globulin, if any, could not be determined.

**Metabolism and Excretion:**

Biotransformation and disposition of fulvestrant in humans have been determined following intramuscular and intravenous administration of <sup>14</sup>C-labeled fulvestrant. Metabolism of fulvestrant appears to involve combinations of a number of possible biotransformation pathways analogous to those of endogenous steroids, including oxidation, aromatic hydroxylation, conjugation with glucuronic acid and/or sulphate at the 2, 3 and 17 positions of the steroid nucleus, and oxidation of the side chain sulphoxide. Identified metabolites are either less active or exhibit similar activity to fulvestrant in antiestrogen models. Studies using human liver preparations and recombinant human enzymes indicate that cytochrome P-450 3A4 (CYP 3A4) is the only P-450 isoenzyme involved in the oxidation of fulvestrant; however, the relative contribution of P-450 and non-P-450 routes *in vivo* is unknown.

Fulvestrant was rapidly cleared by the hepatobiliary route with excretion primarily via the feces (approximately 90%). Renal elimination was negligible (less than 1%).

**Special Populations:****Geriatric:**

In patients with breast cancer, there was no difference in fulvestrant pharmacokinetic profile related to age (range 33 to 89 years).

**Gender:**

Following administration of a single intravenous dose, there were no pharmacokinetic differences between men and women or between premenopausal and postmenopausal women. Similarly, there were no differences between men and postmenopausal women after intramuscular administration.

**Race:**

In the advanced breast cancer treatment trials, the potential for pharmacokinetic differences due to race have been evaluated in 294 women including 87.4% Caucasian, 7.8% Black, and 4.4% Hispanic. No differences in fulvestrant plasma pharmacokinetics were observed among these groups. In a separate trial, pharmacokinetic data from postmenopausal ethnic Japanese women were similar to those obtained in non-Japanese patients.

**Renal Impairment:**

Negligible amounts of fulvestrant are eliminated in urine; therefore, a study in patients with renal impairment was not conducted. In the advanced breast cancer trials, fulvestrant concentrations in women with estimated creatinine clearance as low as 30 mL/min were similar to women with normal creatinine.

**Hepatic Impairment:**

Fulvestrant is metabolized primarily in the liver. In clinical trials in patients with locally advanced or metastatic breast cancer, pharmacokinetic data were obtained following administration of a 250 mg dose of FASLODEX to 261 patients classified as having normal liver function and to 24 patients with mild impairment. Mild impairment was defined as an alanine aminotransferase concentration (at any visit) greater than the upper limit of the normal (ULN) reference range, but less than 2 times the ULN; or if any 2 of the following 3 parameters were between 1- and 2-times the ULN: aspartate aminotransferase, alkaline phosphatase, or total bilirubin.

There was no clear relationship between fulvestrant clearance and hepatic impairment and the safety profile in patients with mild hepatic impairment was similar to that seen in patients with no hepatic impairment. Safety and efficacy have not been evaluated in patients with moderate to severe hepatic impairment (see **PRECAUTIONS-Hepatic Impairment** and **DOSAGE AND ADMINISTRATION-Hepatic Impairment** sections).

#### Pediatric:

The pharmacokinetics of fulvestrant have not been evaluated in pediatric patients.

#### Drug-Drug Interactions:

There are no known drug-drug interactions. Fulvestrant does not significantly inhibit any of the major CYP isoenzymes, including CYP 1A2, 2C9, 2C19, 2D6, and 3A4 *in vitro*, and studies of co-administration of fulvestrant with midazolam indicate that therapeutic doses of fulvestrant have no inhibitory effects on CYP 3A4 or alter blood levels of drug metabolized by that enzyme. Although fulvestrant is partly metabolized by CYP 3A4, a clinical study with rifampin, an inducer of CYP 3A4, showed no effect on the pharmacokinetics of fulvestrant. Also results from a healthy volunteer study with ketoconazole, a potent inhibitor of CYP3A4, indicated that ketoconazole had no effect on the pharmacokinetics of fulvestrant and dosage adjustment is not necessary in patients co-prescribed CYP 3A4 inhibitors or inducers.

#### Clinical Studies

Efficacy of FASLODEX was established by comparison to the selective aromatase inhibitor anastrozole in two randomized, controlled clinical trials (one conducted in North America, the other predominately in Europe) in postmenopausal women with locally advanced or metastatic breast cancer. All patients had progressed after previous therapy with an antiestrogen or progestin for breast cancer in the adjuvant or advanced disease setting. The majority of patients in these trials had ER+ and/or PgR+ tumors. Patients who had ER-/PgR- or unknown disease must have shown prior response to endocrine therapy.

In both trials, eligible patients with measurable and/or evaluable disease were randomized to receive either FASLODEX 250 mg intramuscularly once a month (28 days  $\pm$  3 days) or anastrozole 1 mg orally once a day. All patients were assessed monthly for the first three months and every three months thereafter. The North American trial was a double-blind, randomized trial in 400 postmenopausal women. The European trial was an open, randomized trial conducted in 451 patients. Patients on the FASLODEX arm of the North American trial received two separate injections (2 X 2.5 mL), whereas FASLODEX patients received a single injection (1 X 5 mL) in the European trial. In both trials, patients were initially randomized to a 125 mg per month dose as well, but interim analysis showed a very low response rate and low dose groups were dropped.

The effectiveness endpoints were response rates (RR), based on the Union Internationale Contre le Cancer (UICC) criteria, and time to progression (TTP). Survival time was also determined. Confidence intervals (95.4%) were calculated for the difference in RR between the FASLODEX and anastrozole groups. The hazard ratio for an unfavorable event, (such as disease progression or death) between FASLODEX and anastrozole groups was also determined.

Table 2 provides the demographics and baseline characteristics of the postmenopausal women randomized to FASLODEX 250 mg or anastrozole 1 mg.

**TABLE 2: STUDY POPULATION DEMOGRAPHICS**

Parameter	North American Trial		European Trial	
	FASLODEX 250 mg	Anastrozole 1 mg	FASLODEX 250 mg	Anastrozole 1 mg
No. of Participants	206	194	222	229
Median Age (yrs)	64	61	64	65
Age Range (yrs)	33 - 89	36 - 94	35 - 86	33 - 89
<b>Receptor Status # (%)</b>				
ER Positive	170 (83%)	156 (80%)	156 (70%)	173 (76%)
ER/PgR Positive	179 (87%)	169 (87%)	163 (73%)	183 (80%)
ER/PgR Unknown	13 (6%)	15 (8%)	51 (23%)	37 (16%)
<b>Previous Therapy</b>				
Tamoxifen	196 (95%)	187 (96%)	215 (97%)	225 (98%)
Adjuvant antiestrogen only	94 (46%)	94 (48%)	95 (43%)	100 (44%)
Antiestrogen for advanced disease ± adjuvant use	110 (53%)	97 (50%)	126 (57%)	129 (56%)
Cytotoxic Chemotherapy	129 (63%)	122 (63%)	94 (42%)	98 (43%)
<b>Site of Metastases</b>				
Visceral only*	39 (19%)	45 (23%)	30 (14%)	41 (18%)
Viscera				
Liver involvement	47 (23%)	45 (23%)	48 (22%)	56 (24%)
Lung involvement	63 (31%)	60 (31%)	56 (25%)	60 (26%)
Bone only	47 (23%)	43 (22%)	38 (17%)	40 (17%)
Soft Tissue only	12 (6%)	13 (7%)	11 (5%)	8 (3%)
Skin and soft tissue	43 (21%)	41 (21%)	40 (18%)	35 (15%)

\* Defined as liver or lung metastatic, or recurrent, disease

ER/PgR Positive defined as ER positive or PgR positive

ER/PgR Unknown defined as ER unknown and PgR unknown

Results of the trials, after a minimum follow-up duration of 14.6 months, are summarized in Table 3. The effectiveness of FASLODEX 250 mg was determined by comparing RR and TTP results to anastrozole 1 mg, the active control. With respect to response rate, the two studies ruled out (by one-sided 97.7% confidence limit) inferiority of FASLODEX to anastrozole of 6.3% and 1.4%. There was no statistically significant difference in the survival time between the two treatment groups.

**Table 3: Efficacy Results**

Endpoint	North American Trial		European Trial	
	FASLODEX 250 mg (n=206)	Anastrozole 1 mg (n=194)	FASLODEX 250 mg (n=222)	Anastrozole 1 mg (n=229)
Objective tumor response Number (%) of subjects with CR + PR	35 (17.0)	33 (17.0)	45 (20.3)	34 (14.9)

# Explore Litigation Insights

Docket Alarm provides insights to develop a more informed litigation strategy and the peace of mind of knowing you're on top of things.

## Real-Time Litigation Alerts



Keep your litigation team up-to-date with **real-time alerts** and advanced team management tools built for the enterprise, all while greatly reducing PACER spend.

Our comprehensive service means we can handle Federal, State, and Administrative courts across the country.

## Advanced Docket Research



With over 230 million records, Docket Alarm's cloud-native docket research platform finds what other services can't. Coverage includes Federal, State, plus PTAB, TTAB, ITC and NLRB decisions, all in one place.

Identify arguments that have been successful in the past with full text, pinpoint searching. Link to case law cited within any court document via Fastcase.

## Analytics At Your Fingertips



Learn what happened the last time a particular judge, opposing counsel or company faced cases similar to yours.

Advanced out-of-the-box PTAB and TTAB analytics are always at your fingertips.

## API

Docket Alarm offers a powerful API (application programming interface) to developers that want to integrate case filings into their apps.

## LAW FIRMS

Build custom dashboards for your attorneys and clients with live data direct from the court.

Automate many repetitive legal tasks like conflict checks, document management, and marketing.

## FINANCIAL INSTITUTIONS

Litigation and bankruptcy checks for companies and debtors.

## E-DISCOVERY AND LEGAL VENDORS

Sync your system to PACER to automate legal marketing.